

Oxford East

University Ave | Oxford, MS 38655

AVAILABLE

*1 AC OUTPARCEL

*2 SUITES | 1,556 SF EA

*SPACE #1922 | 1,500 SF

+/- 1 AC
OUTPARCEL

*Drive-thru

21,000
VEHICLES PER DAY

OLD TOWN
SHOPPING CENTER

22,900
VEHICLES PER DAY



Paris NAILS



LA PERLA TAPATIA

metro
by T-Mobile



Domino's

DOLLAR GENERAL



Larson's
CASHSAVER
ST PLUS FOOD OUTLET



China Royal



SUBWAY



Walgreen's



McDonald's



REGIONS



RENASANT
BANK



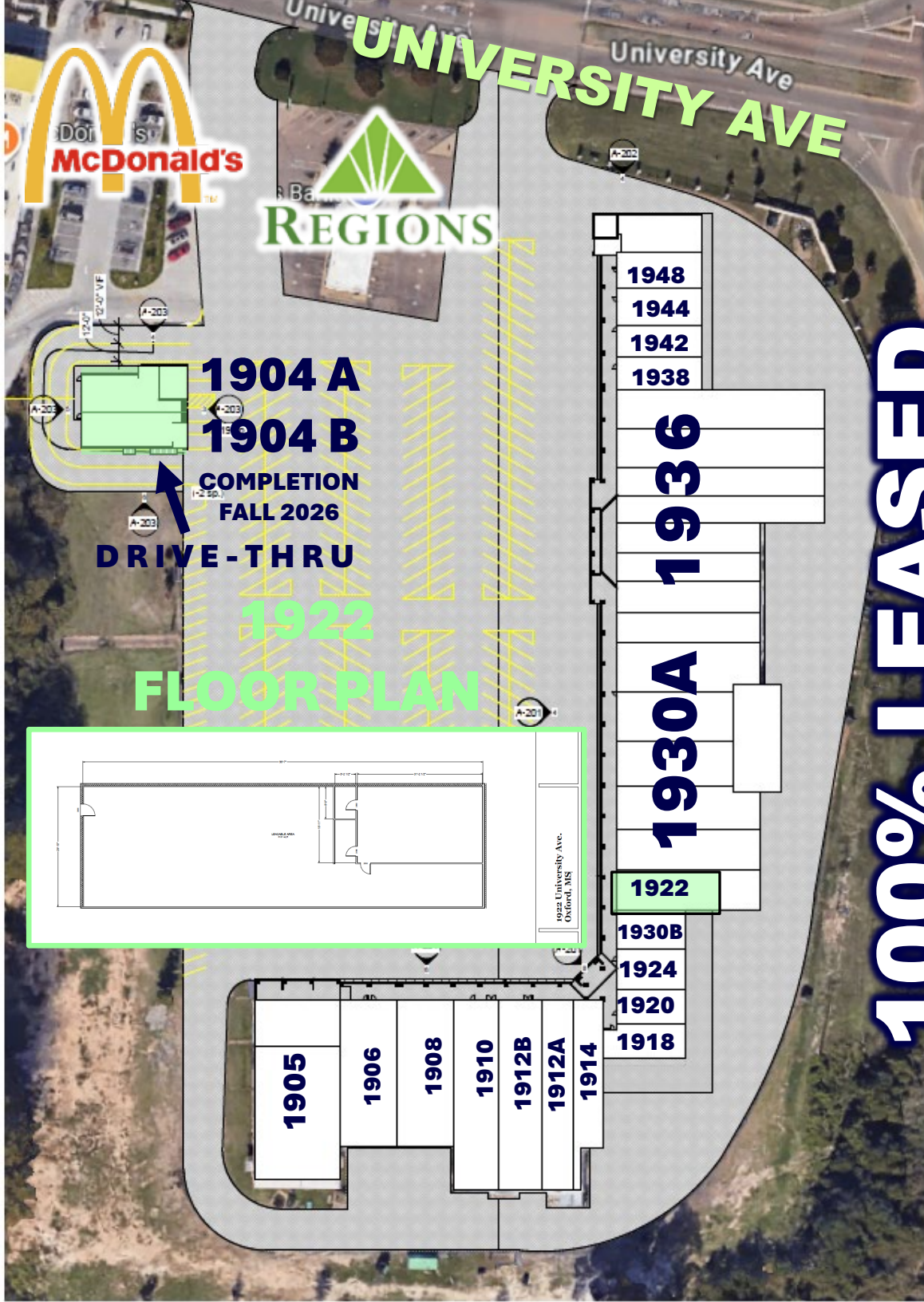
Ohy's



DOLLAR TREE



Oxford
URGENT CARE

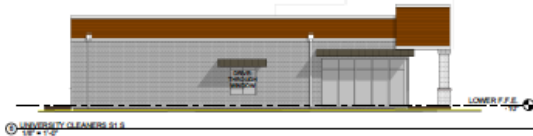
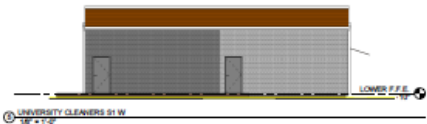


TENANTS

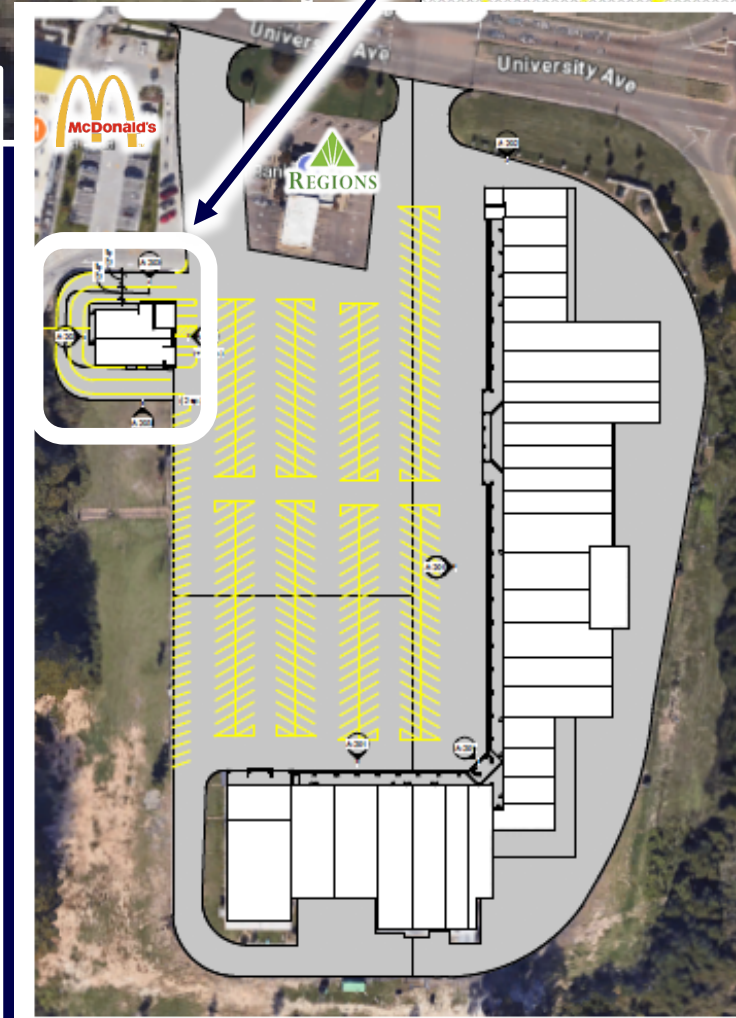
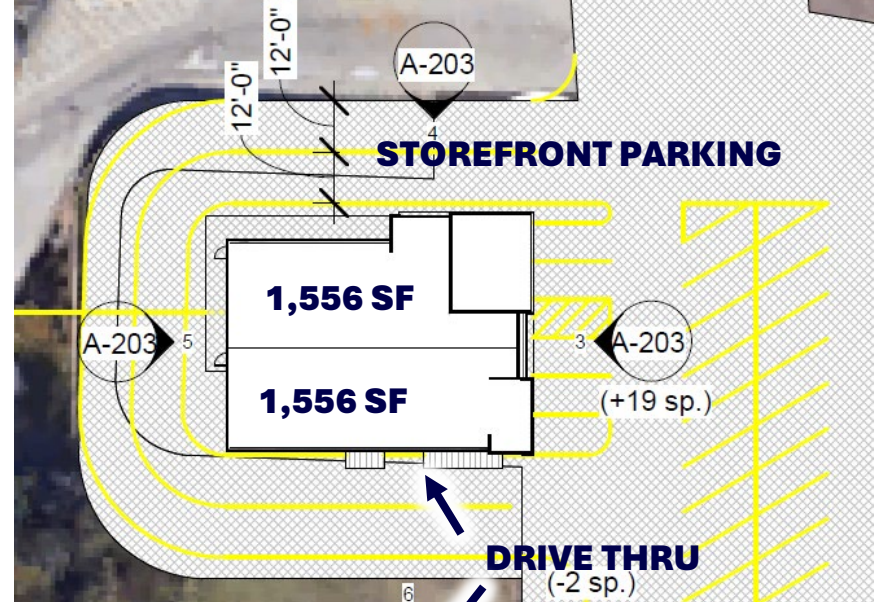
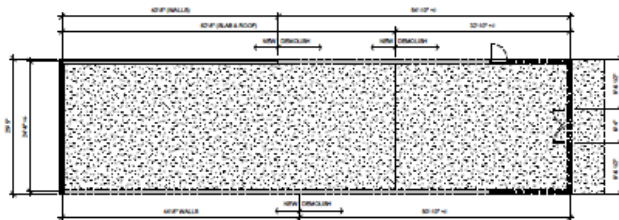
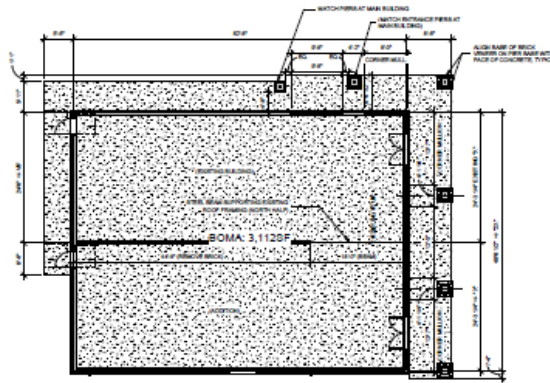
- 1904 A AVAILABLE | 1,556 SF
- 1904 B AVAILABLE | 1,556 SF
- 1905 VINCENT OUTFITTERS
- 1906 PARIS NAIL & SALON
- 1908 QUEEN BEAUTY SUPPLY
- 1910 RENT-A-CENTER
- 1912 B CRU WINE & LIQUOR STORE
- 1912 A LAPERLA TAPATIA
- 1914 MEDICAL CLINIC
- 1918 INTERFAITH COMPASSION
- 1920 DOMINO'S
- 1924 T-LINK WIRELESS
- 1930 B T MOBILE
- 1930 A DOLLAR GENERAL
- 1922 AVAILABLE | 1,500 SF
- 1936 LARSON'S CASH SAVER
- 1938 CHINA ROYAL
- 1942 EZ CASH
- 1944 BREMMA'S CAKES
- 1948 SUBWAY

PRE-LEASING

Previously the University Cleaners



- **BUILDING SIZE: 3,112 SF**
- **TWO SUITES: 1,556 SF EACH**
- **FEATURE: Drive-Thru Window**
- **AVAILABLE: 4Q 2026.**



OXFORD EAST SHOPPING CENTER

HIGHLIGHTS

- ❖ **ESTABLISHED RETAIL CENTER:** 43,000 SF
- ❖ **ZONING:** TNB (Traditional Neighborhood Business District)
- ❖ **EXCEPTIONAL VISIBILITY:** Cross Streets- University Ave and MS-7
- ❖ **EXCEPTIONAL CO-TENANCY:** Dollar General, Subway, Dominos, Rent-A-Center, McDonalds
- ❖ **ABUNDANT PARKING:** 290+ Spaces
- ❖ **AVAILABLE: 1+/- ACRE OUTPARCEL**
- ❖ **PRE-LEASING: 2 SUITES | 1,556 SF EACH**
- ❖ **AVAILABLE NOW: Space #1922 | 1,500 SF**

DEMOGRAPHICS

	<u>1 MILE</u>	<u>3 MILE</u>	<u>5 MILE</u>
Population	5,317	29,703	43,356
Households	2,356	10,746	16,620
HH Income	\$109,650	\$97,338	\$96,145

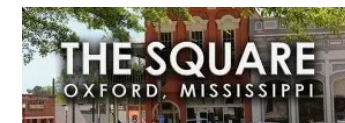
DAILY TRAFFIC

UNIVERSITY AVE	21,033+
HIGHWAY 7 N	22,911+

LOCATION

Ole Miss

1.7 Miles/5 Mins



THE SQUARE
OXFORD, MISSISSIPPI

1 Mile/4 Mins



3 Miles/7 Mins



AERIAL



B Bramlett Elementary



OXFORD EAST CENTER

OUTPARCEL SITE

This 1.1-acre outparcel is positioned within the fully leased Oxford East Shopping Center at one of Oxford's most heavily traveled intersections. With strong daily traffic counts, prominent frontage, and a surrounding mix of national retailers, the site offers an excellent opportunity for QSR, retail, medical, or service-oriented development. Located just minutes from Ole Miss and Downtown Oxford, the property benefits from consistent local and university-driven traffic.



OXFORD, MISSISSIPPI

MISSISSIPPI'S COLLEGE TOWN



LOCATION OVERVIEW

Nestled in the Hills of North Mississippi, the city of Oxford is the home of the University of Mississippi, also known as Ole Miss. Nobel Prize-winning author William Faulkner made his home here and found inspiration in the people and places of Oxford and Lafayette County which he fictionalized in his Jefferson and Yoknapatawpha County. Many writers have followed in Faulkner's footsteps, making the city of Oxford their home over the years adding to the literary reputation Oxford has become renowned for including: Larry Brown, Barry Hannah, Willie Morris and John Grisham to name a few. Oxford has been featured in publications such as Conde Nast Traveler, Budget Travel, Southern Living and Garden and Gun. Touted as the "Cultural Mecca of the South", creativity abounds in Oxford as musicians, artists and writers alike find inspiration in Oxford's rich history, small-town charm and creative community. Over the years Oxford has also been known for offering exceptional culinary experiences including James Beard award-winning chef and owner of five restaurants, John Currence. From down home cooking to upscale culinary creations, Oxford is a food lovers delight.



LOCATION HIGHLIGHTS

- **ECONOMY:** Oxford has seen the job market increase by 2.2% over the last year.
- **COST OF LIVING:** Compared to the rest of country, Oxford's cost of living is 8% lower than the national average.
- **POPULATION:** Oxford's population is 28,996 people. Since 2000 it has grown 200%
- **REAL ESTATE:** The median home cost in Oxford is \$235,000.

FOR MORE INFORMATION:



FRANK DYER III, CCIM, RPA
Senior Vice President of Brokerage
(C) 901.277.8183
frank@gillprop.com



BARRY MAYNARD
Senior Vice President of Brokerage
(C) 901.230.4265
barry@gillprop.com



6815 POPLAR AVENUE, SUITE 110
GERMANTOWN, TN 38138
901.758.1100