

FOR LEASE

Lake Elmo Bank Building

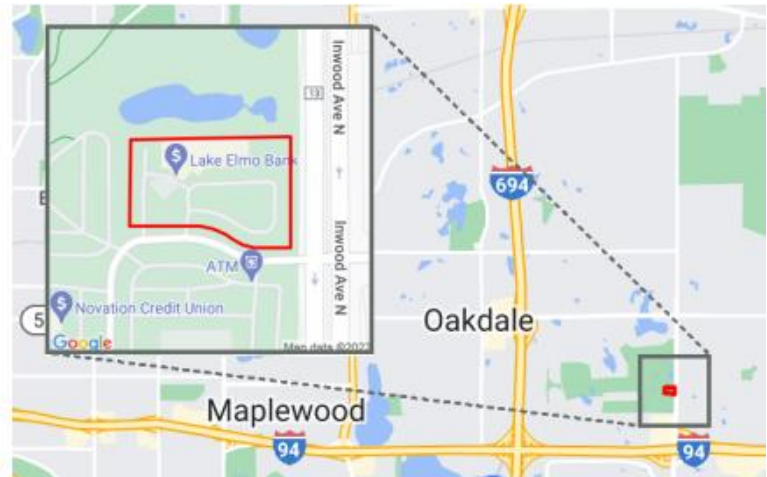
600 Inwood Avenue N, Oakdale MN 55128



PROPERTY DETAILS

- Two story professional office building conveniently located in Oakdale off I94.
- Local ownership and onsite Property Management
- Building conference room
- Vending area
- Underground parking garage with car wash
- Shower/locker room on site.
- Monument signage
- Building Size: 35,679 SF

LOCATION



LISTING DETAILS

- Suite 235
- 922 SF Gross
- Lease rate: From \$29.00/SF Gross (\$2,228/month)
- Second floor suite with reception, storage and two private offices on glass.



CROSSROADS
PROPERTIES

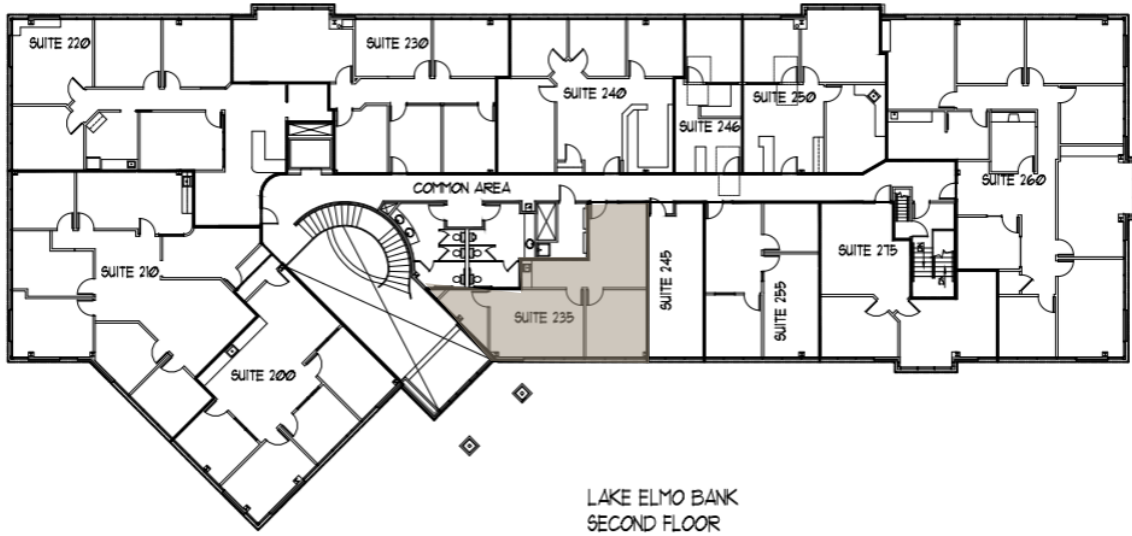
Dawn Wessels/Amy Johnson/Steve Poechmann
651-731-0708 Option 2 For Sales and Leasing
7250 Hudson Boulevard N, Suite 160, Oakdale, MN 55128
www.crossroadsproperties.net

FOR LEASE

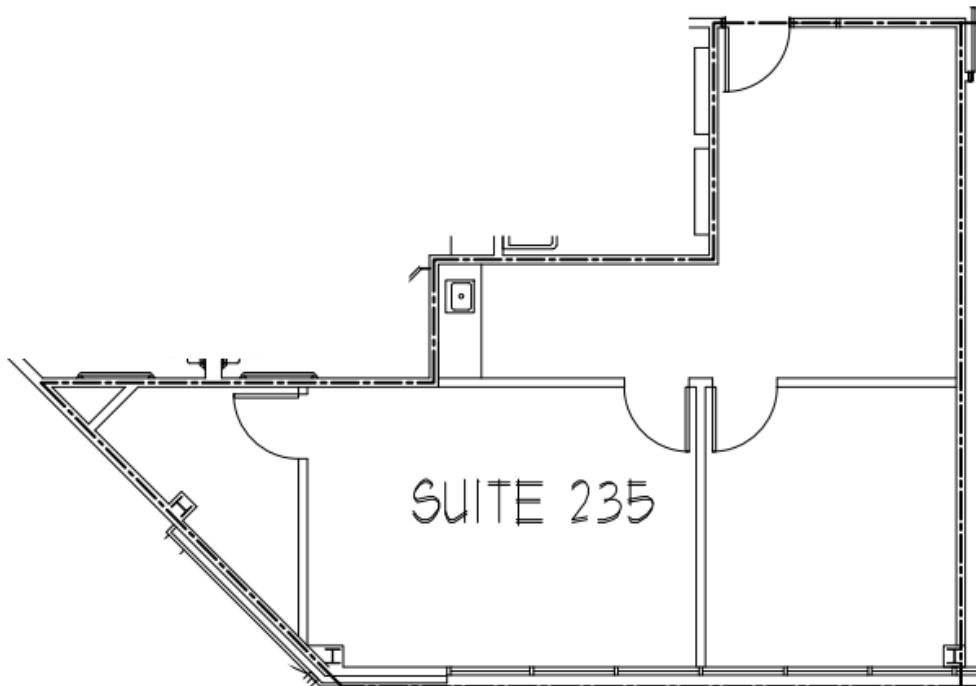
Lake Elmo Bank Building

600 Inwood Avenue N, Oakdale MN 55128

Second Floor



Suite 235



CROSSROADS
PROPERTIES

Dawn Wessels/Amy Johnson/Steve Poechmann

651-731-0708 Option 2 For Sales and Leasing

7250 Hudson Boulevard N, Suite 160, Oakdale, MN 55128

www.crossroadsproperties.net