

RETAIL/OFFICE FOR LEASE

Highly Visible and Move-in Ready



Located along the highly traveled Perryville Rd. corridor in Loves Park, 4133 N Perryville Rd. offers 1,800 SF of fully finished office space within a well-maintained two-tenant building.

Convenient access to the greater Rockford market and surrounding neighborhoods further enhances its appeal for both office and customer-facing users.



NATHAN BRYANT, CCIM

Licensed Real Estate Broker & CEO

Mobile: (815)-218-1371 • Office: (815)-200-6004

Email: nathan@bryantcg.com

KELLER WILLIAMS REALTY SIGNATURE

4201 Galleria Dr. Loves Park, IL 61111



BRYANT
COMMERCIAL GROUP

Each Office is Individually Owned & Operated

RETAIL/OFFICE FOR LEASE

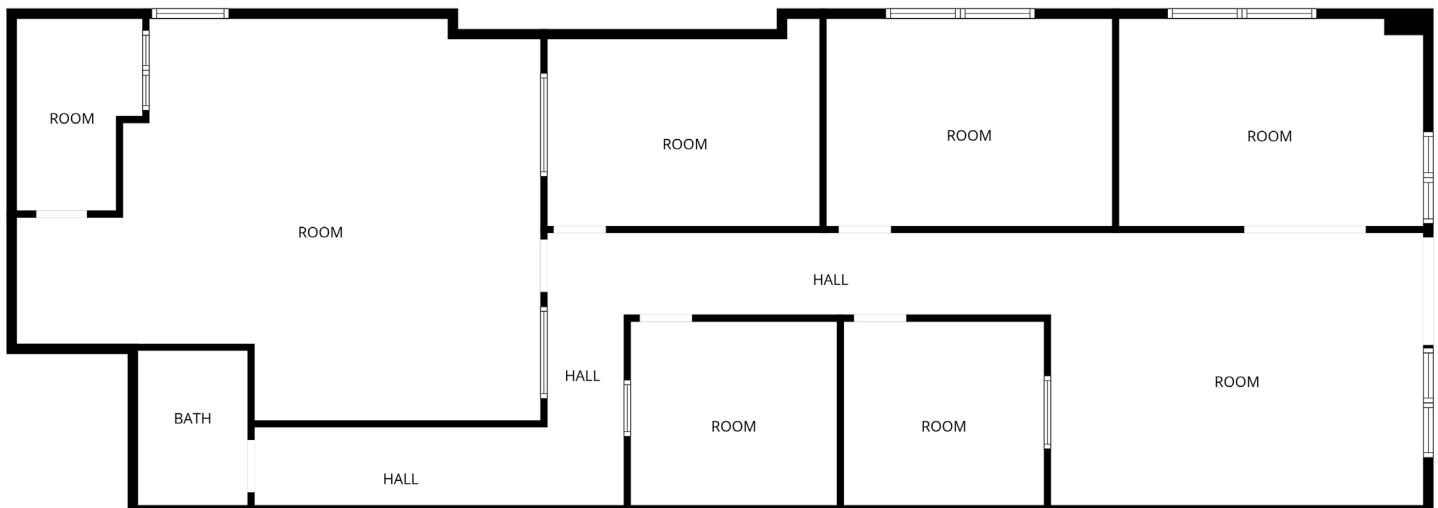
Highly Visible and Move-in Ready

PROPERTY HIGHLIGHTS

Building SF:	16,000 SF
Parking Count:	45
Zoning:	Industrial-Commercial
Available SF:	1,800 SF
Lease Rate:	Call For Details
Lease Type:	NNN
Lease Term:	3 years min



With strong average daily traffic counts, excellent visibility, and prominent signage opportunities, the property provides an ideal setting for businesses seeking exposure along one of the area's primary commercial corridors.



NATHAN BRYANT, CCIM
Licensed Real Estate Broker & CEO

Mobile: (815)-218-1371 • Office: (815)-200-6004
Email: nathan@bryantcg.com

KELLER WILLIAMS REALTY SIGNATURE
4201 Galleria Dr. Loves Park, IL 61111



BRYANT
COMMERCIAL GROUP

Each Office is Individually Owned & Operated



BRYANT
COMMERCIAL GROUP

4133 N Perryville Rd. Loves Park, IL

RETAIL/OFFICE FOR LEASE

Highly Visible and Move-in Ready



The suite features a functional layout suitable for a variety of professional users, while also offering the flexibility to accommodate retail use.



NATHAN BRYANT, CCIM

Licensed Real Estate Broker & CEO

Mobile: (815)-218-1371 • Office: (815)-200-6004

Email: nathan@bryantcg.com

KELLER WILLIAMS REALTY SIGNATURE

4201 Galleria Dr. Loves Park, IL 61111



BRYANT
COMMERCIAL GROUP

Each Office is Individually Owned & Operated