

# Hawks Plaza

Class A retail space available for lease located one block off of Ankeny's heaviest traveled corridor, Oralabor Road. This newly constructed shopping center was completed in 2021 and sits adjacent to Olive Garden and a Walmart Supercenter. Nearby businesses include Perkins, Holiday Inn Express, Sportsman's Warehouse, Caribou Coffee, Crumbl Cookies, McDonalds, Taco Bell, BioLife Plasma Services, Super Target, Walgreens, Menards, and Home Depot. Ankeny, Iowa is the 10th fastest growing City in the United States by U.S. Census Bureau.

2575 SE Hulsizer Road  
Ankeny, Iowa 50021  
[www.cbre.com/desmoines](http://www.cbre.com/desmoines)

## Available Space:

- + Suite 102 – 1,772 SF
- + Suite 103 – 1,260 SF
- + Suite 104 – 1,267 SF  
Ability for outdoor patio

\*Suites can be combined to accommodate 4,299 SF.

## Pricing:

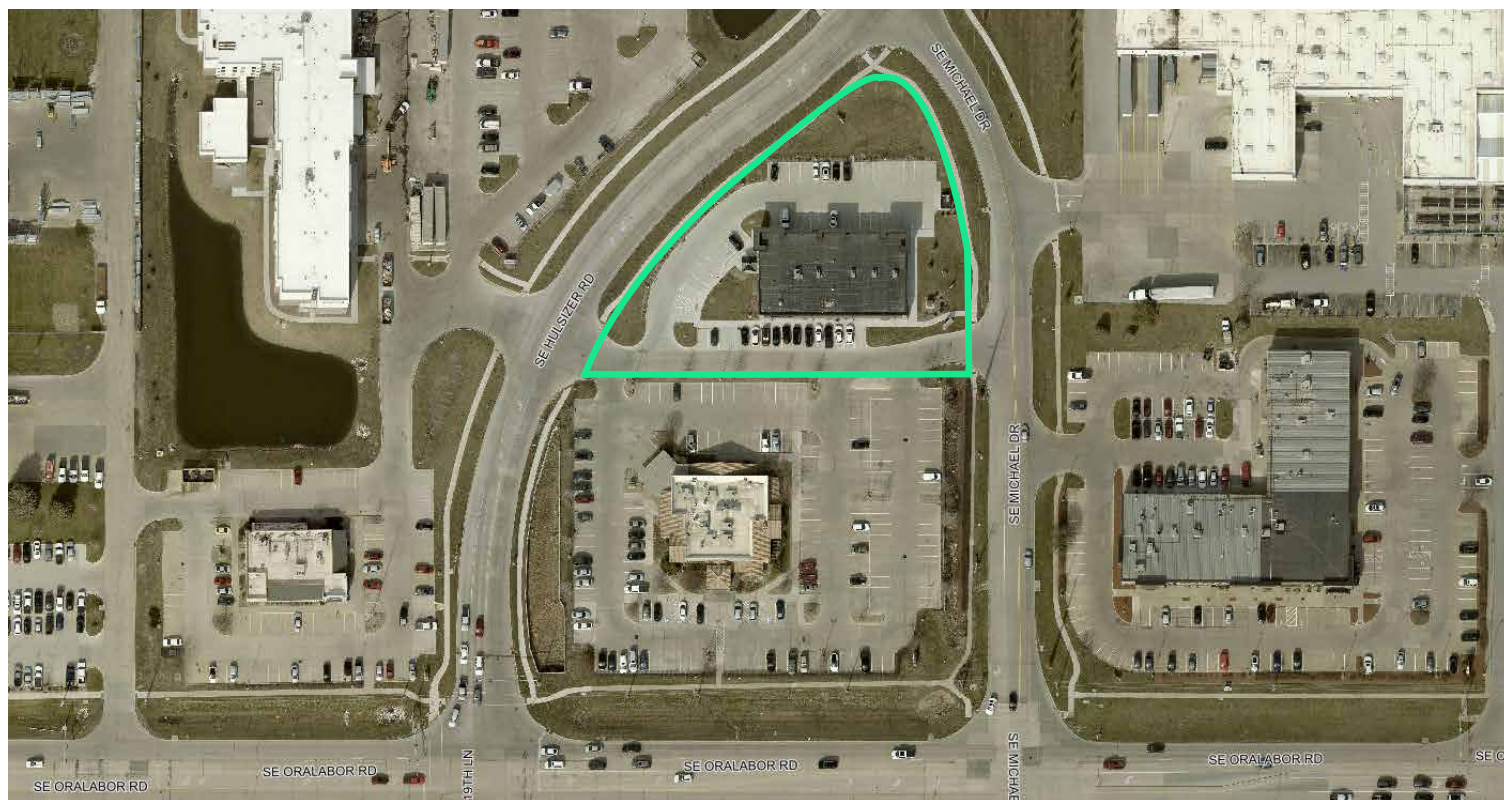
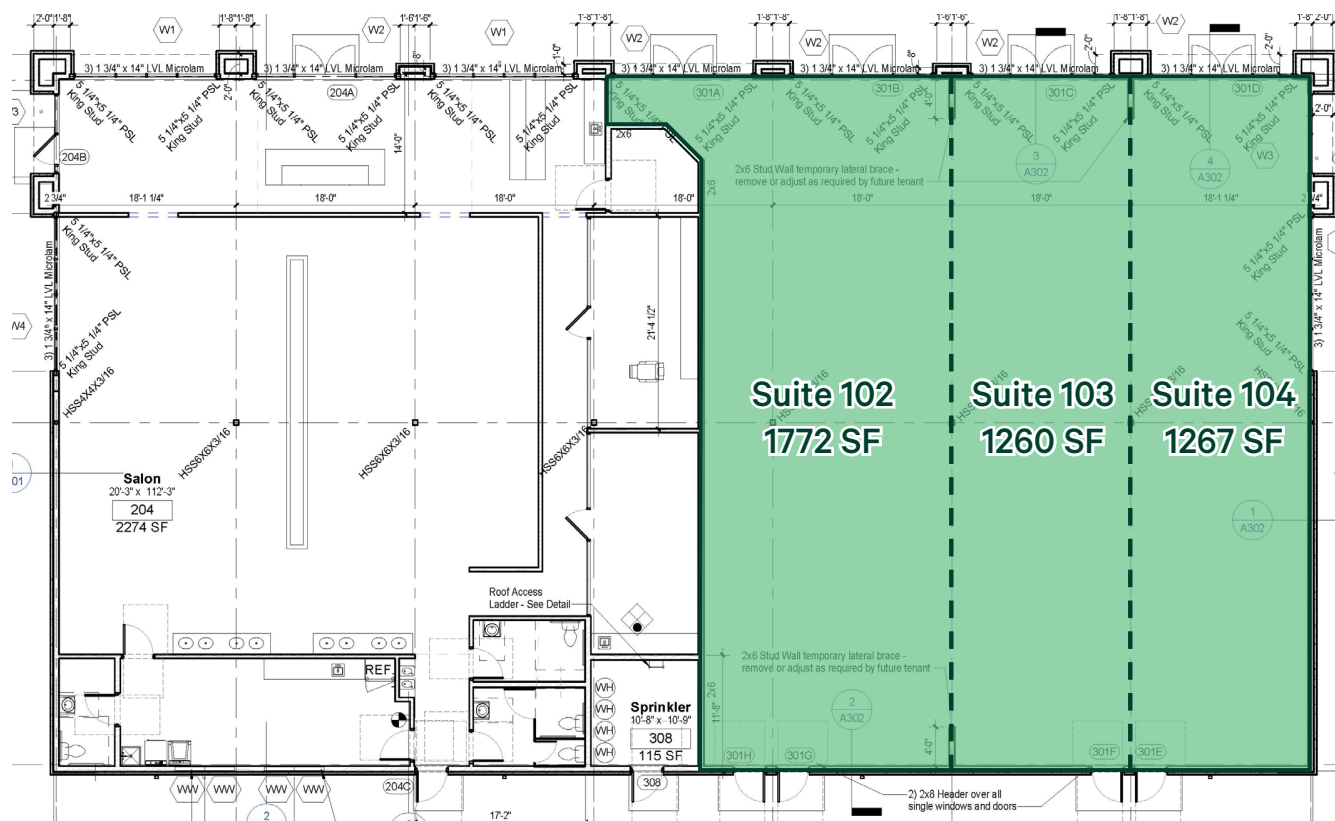
- + \$22.00 PSF NNN – Endcap Space
- + \$20.00 PSF NNN – Inline Space
- + CAMIT available upon request
- + Sale Price: Call Broker

## Building Features:

- + Constructed in 2019
- + Anchored by PON Nail Spa
- + 70' Bay Depth
- + Monument Signage
- + Building Signage (2 sided)
- + Visibility from Oralabor Road – 21,400 VPD



# Lease Plan



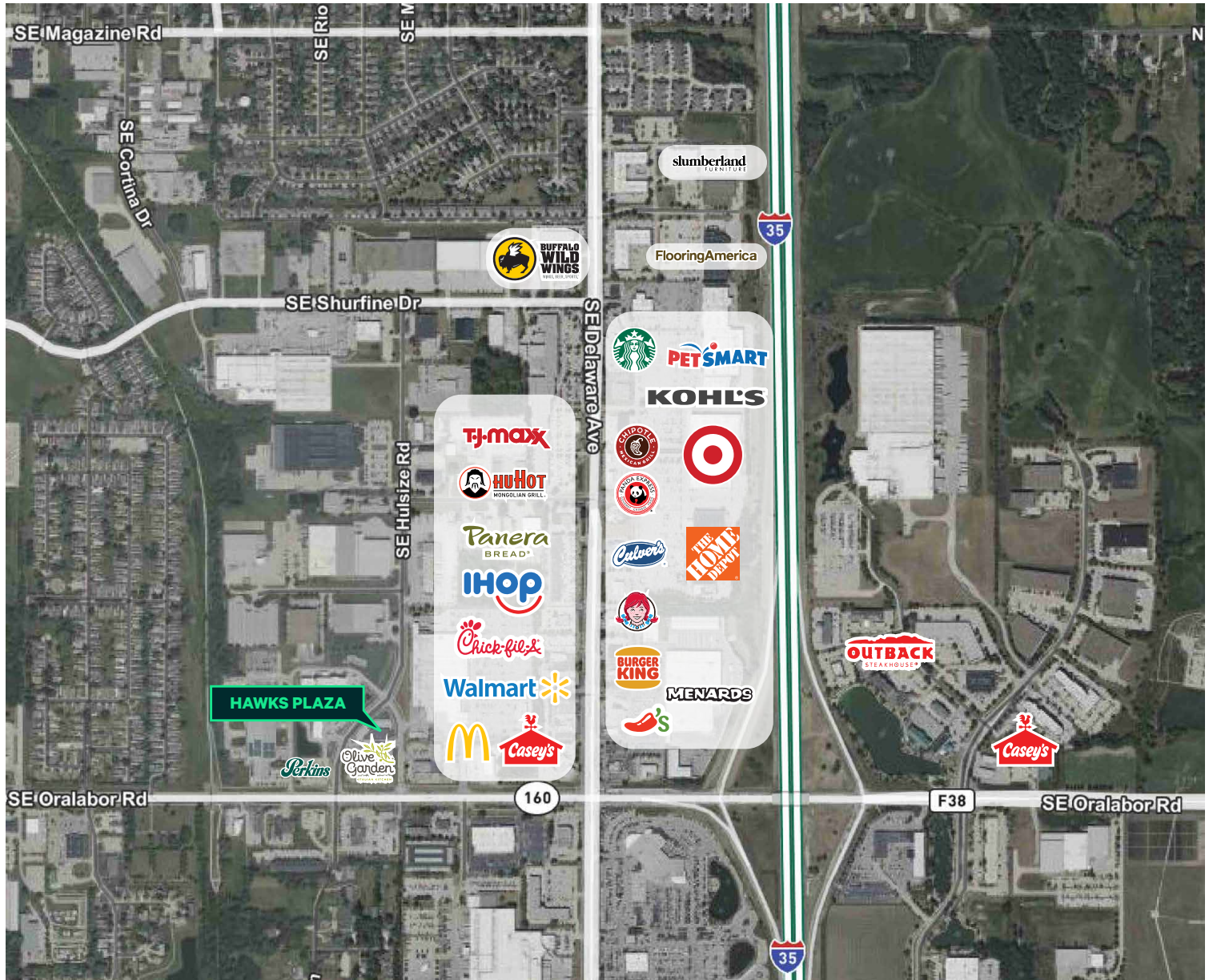


## Hawks Plaza

2575 SE Hulsizer Road | Ankeny, Iowa

For Sale or Lease

# Location



## Contact Us

### Bill Wright

Senior Vice President  
+1 515 210 3050  
bill.wright2@cbre.com  
Licensed in the State of Iowa.

### Chris Pendroy, CCIM, SIOR

Senior Vice President  
+1 515 402 6600  
chris.pendroy@cbre.com  
Licensed in the State of Iowa.

### Grant Wright, CCIM

First Vice President  
+1 515 745 5113  
grant.wright@cbre.com  
Licensed in the State of Iowa.

### Dakota Little

Senior Associate  
+1 515 745 4378  
dakota.little@cbre.com  
Licensed in the State of Iowa.

© 2025 CBRE, Inc. All rights reserved. This information has been obtained from sources believed reliable, but has not been verified for accuracy or completeness. You should conduct a careful, independent investigation of the property and verify all information. Any reliance on this information is solely at your own risk. CBRE and the CBRE logo are service marks of CBRE, Inc. All other marks displayed on this document are the property of their respective owners, and the use of such logos does not imply any affiliation with or endorsement of CBRE. Photos herein are the property of their respective owners. Use of these images without the express written consent of the owner is prohibited.