

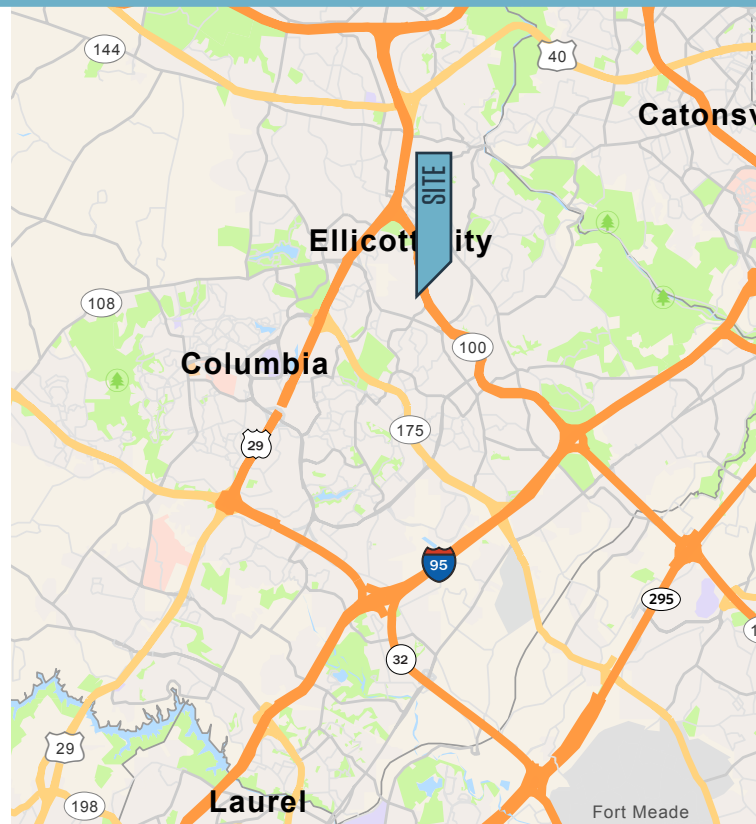


## MEDICAL SPACE FOR SALE

### PROPERTY HIGHLIGHTS

- **Suite 301:** 2,013 square feet available
- **Asking Price:** Negotiable
- **Parking:** Free and unreserved
- **Condo Fee:** \$718 per month
- **Taxes:** \$5,949 per year
- Convenient access to Routes 100 & 29 and I-95
- Walking distance to restaurants, banking, daycare and hotels

### NEARBY AMENITIES



Austin Eber  
aeber@klnb.com  
443-574-1429

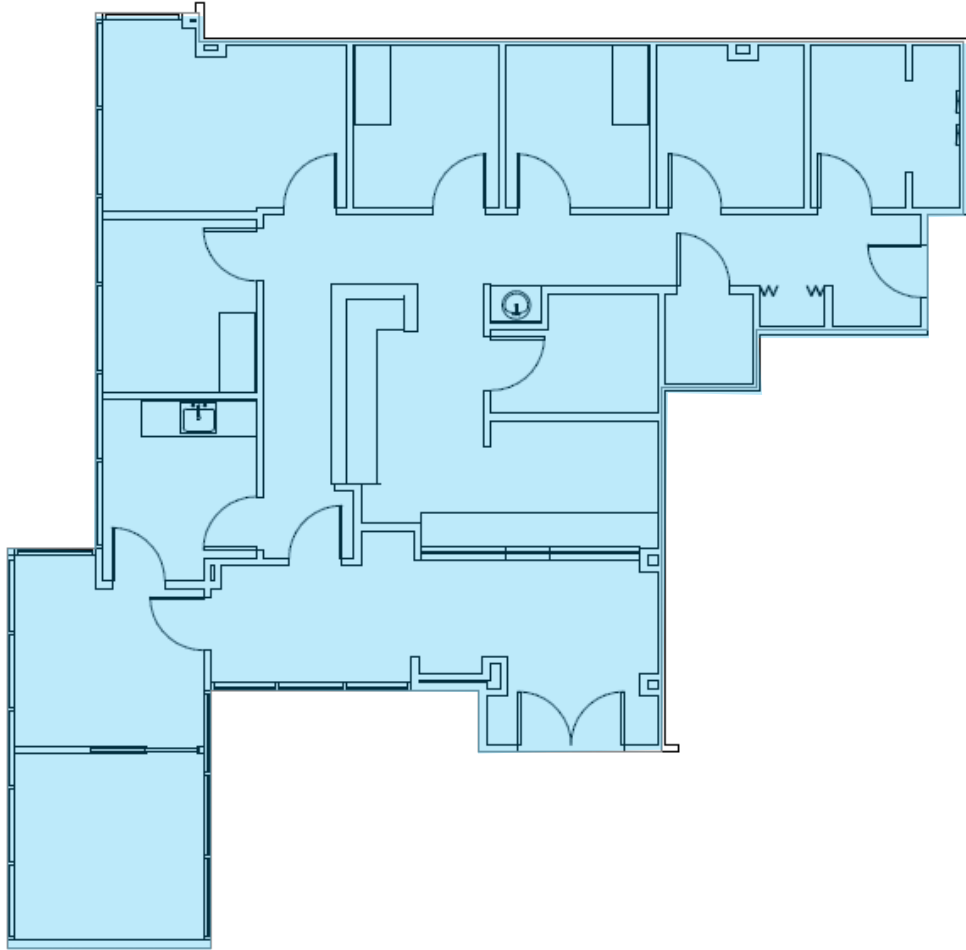
Chuck Breitenother  
cbreitenother@klnb.com  
443-574-1422

9881 Broken Land Pkwy, Suite 300  
Columbia, MD 21046  
klnb.com

# 8850 COLUMBIA 100 PARKWAY

Columbia, MD 21045 | Howard County

## FLOOR PLAN | SUITE 301



## DEMOGRAPHICS | 3 MILE



**POPULATION**  
89,739



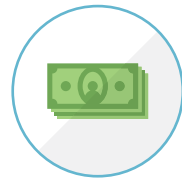
**HOUSEHOLDS**  
33,930



**AVERAGE  
HH INCOME**  
\$174,046



**MEDIAN  
AGE**  
39.6



**DISPOSABLE  
INCOME**  
\$101,856

**Austin Eber**  
aeber@klnb.com  
443-574-1414

**Chuck Breitenother**  
cbreitenother@klnb.com  
443-574-1422

## MARKET AERIAL



## PHOTOS



# 8850 COLUMBIA 100 PARKWAY

Columbia, MD 21045 | Howard County

[CLICK TO VIEW PROPERTY WEBSITE](#)

For More Information, Please Contact:

**Austin Eber**

[aeber@klnb.com](mailto:aeber@klnb.com)

443-574-1414

**Chuck Breitenother**

[cbreitenother@klnb.com](mailto:cbreitenother@klnb.com)

443-574-1422

9881 Broken Land Parkway, Suite 300

Columbia, MD 21046

[klnb.com](http://klnb.com)



[instagram.com/klnbcre](https://www.instagram.com/klnbcre)



[linkedin.com/company/klnb](https://www.linkedin.com/company/klnb)



[facebook.com/KLNBCRE](https://www.facebook.com/KLNBCRE)

While we have no reason to doubt the accuracy of any of the information supplied, we cannot, and do not, guarantee its accuracy. All information should be independently verified prior to a purchase or lease of the property. We are not responsible for errors, omissions, misuse, or misinterpretation of information contained herein and make no warranty of any kind, express or implied, with respect to the property or any other matters.

