

10910 E 55TH PLACE / TULSA, OK 74146



INDUSTRIAL BUILDING

14,354± SF for Sale



CBRE

Building Specifications

Spec Type	Spec Details
Total Size	14,354± SF on 1.11± Acres*
Office Size	- 1,728± SF* - 864± SF 2nd Floor Office*
Dock Doors	(2) 10' x 10' with Levelers
Drive-In Doors	(2) 12' x 14'; (1) 10' x 10'
Height	20' Sidewalls; 22' to Ridge
Insulation	Fully Insulated
Electric Service	480/277 Volt, Three- Phase
Heating	Gas-Fired Heaters in Warehouse
Restrooms	Shop and Office Restrooms
Parking Capability	(23±) Striped Spaces
Other Features	- Piping for Air and Gas Lines - Metal Panel Liner - Clear Span Warehouse - 20' x 50' Climate Controlled Warehouse Addition
*Source: Assessor & Owner	

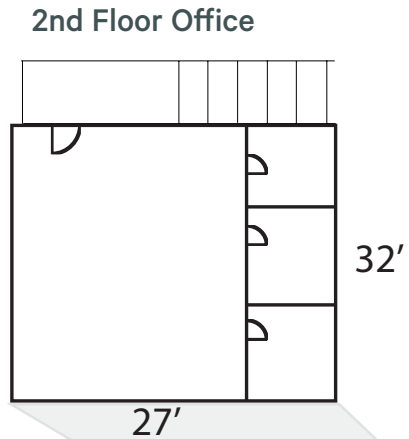




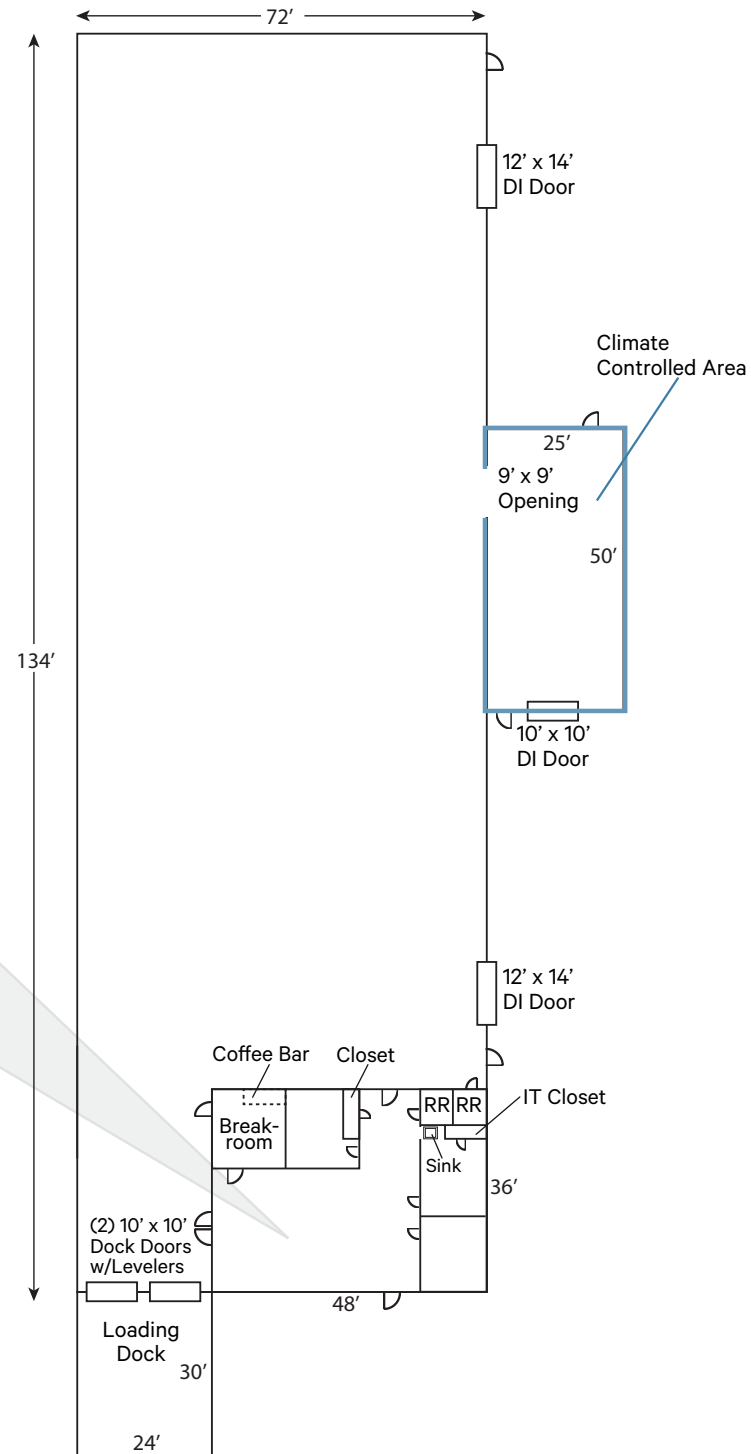




Floor Plan



Drawing not to scale





S Garnett Rd

Hwy 64

DIESEL POWER PLUS

MMHTulsa

Ultimate
Gymnastics

Futsal of Tulsa

Four State
Industrial Supply

MIDWEST WRAPS

HG
AUTO WHOLESALE

E 55th Place



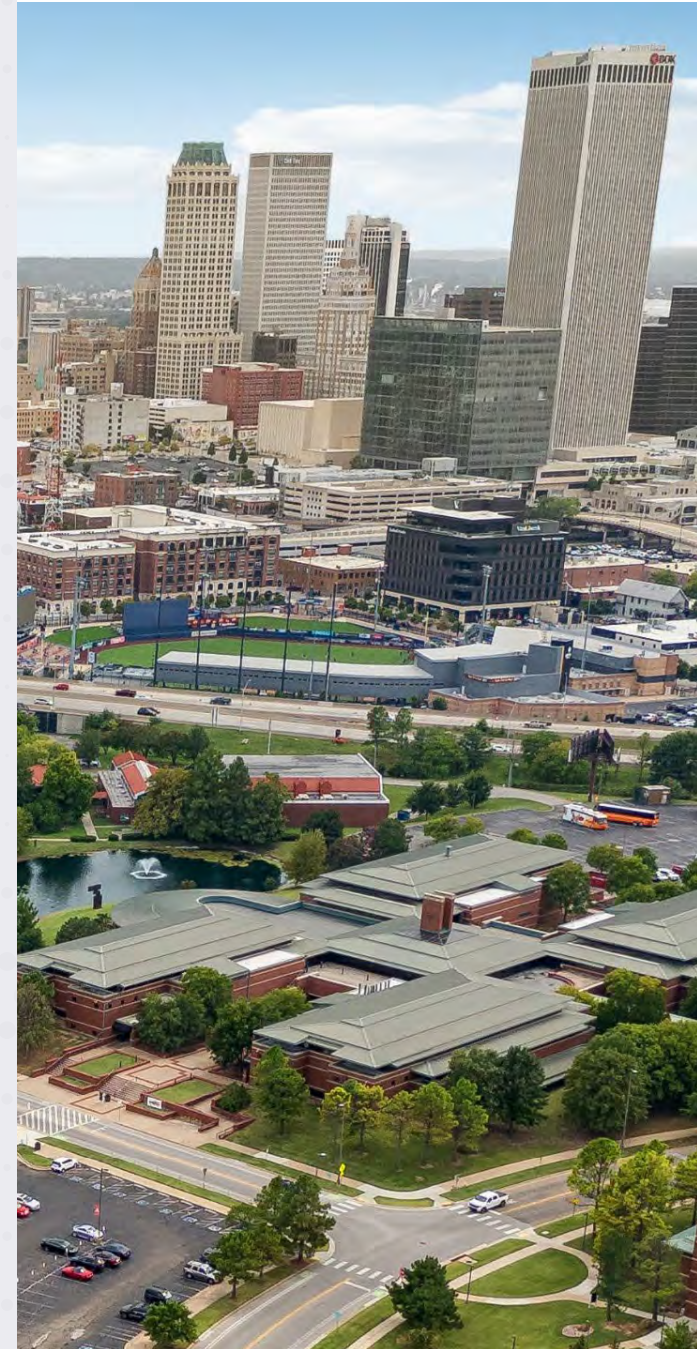
Tulsa's Industrial Economy

Industrial Insights

- + Tulsa continues to experience a sub-3% vacancy rate into 2025 and maintaining the contraction from 2024 as new construction wanes while leasing persists.
- + The local economy proves itself stable as H125 saw several company expansion announcements for industrial users supporting early indications for a modest year-over-year increase in total freight volume, driven by regional manufacturing and energy sector exports.
- + Asking rates hold steady as the market experiences high occupancy and infusions of new supply remain scarce.

Historical Market Statistics

	2021	2022	2023	H1 2024	H2 2024	H1 2025
Vacancy Rate	3.2%	3.9%	4.0%	3.3%	3.3%	2.7%
Net Absorption	88,338	140,416	301,512	60,671	61,763	235,521
Delivered Construction	587,872	816,268	982,820	64,800	393,089	142,751
Under Construction	3,603,588	4,360,856	865,216	413,893	54,921	51,751



Tulsa's Industrial Highlights



AVIATION & AEROSPACE

700+

acres of shovel-ready land
available for development at
Tulsa International Airport

\$11.7B

total economic contribution from the
aviation and aerospace industry

46,233 employees

in aerospace sectors across 250+
businesses in Tulsa

Source: Tulsa Regional Chamber



TECH INDUSTRY

One of 31 Tech Hubs

selected by the U.S. Department of
Commerce's Economic Development
Administrative as part of a
\$51 million investment

56,000

new future-proof jobs created locally
within emerging tech industries

\$15M

committed by state legislature to
enhance and bolster tech initiatives

Source: Tulsa Regional Chamber



ENERGY

1,000+

energy-related companies call
the Tulsa region home

Nearly \$15B

total annual economic impact of the
energy sector to Tulsa's economy

\$361M

of sales tax is supported by activity in
Tulsa's oil and gas industry

67,000+ employees

in the energy industry; representing 1.6%
of all U.S. energy jobs

\$0.55 of additional GDP added to the
local economy for every \$1 of production

Source: Tulsa Regional Chamber



TRANSPORTATION & LOGISTICS

9,000+

acres of industrial land ready for
development in the Tulsa region

\$1.7B

total annual economic impact of the
logistics sector to Tulsa's economy

\$77.7M

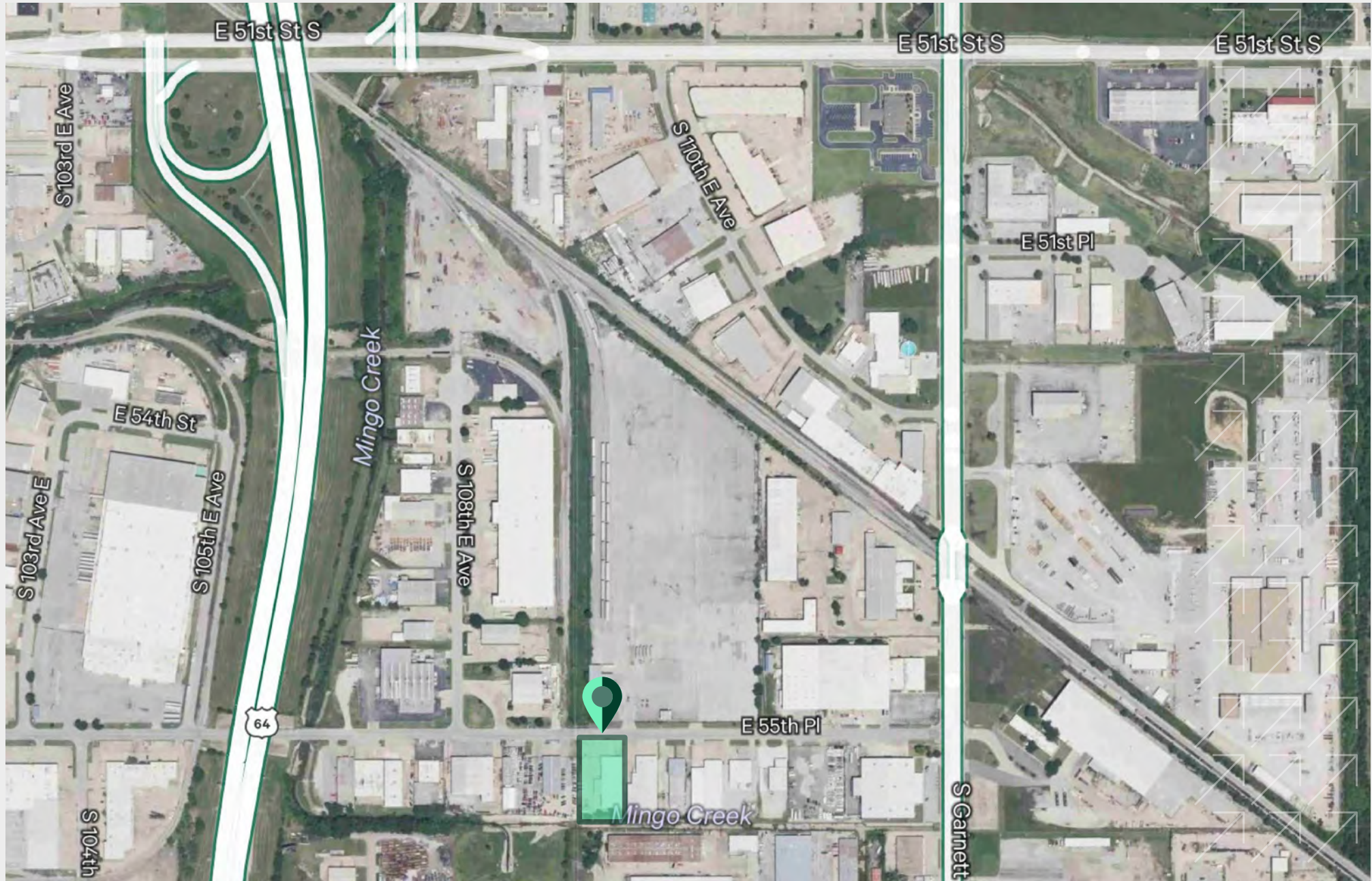
in annual tax revenue for the
City of Tulsa from the logistics industry

Each logistics job contributes
\$82,106 to the gross product
of Tulsa's 11-county area

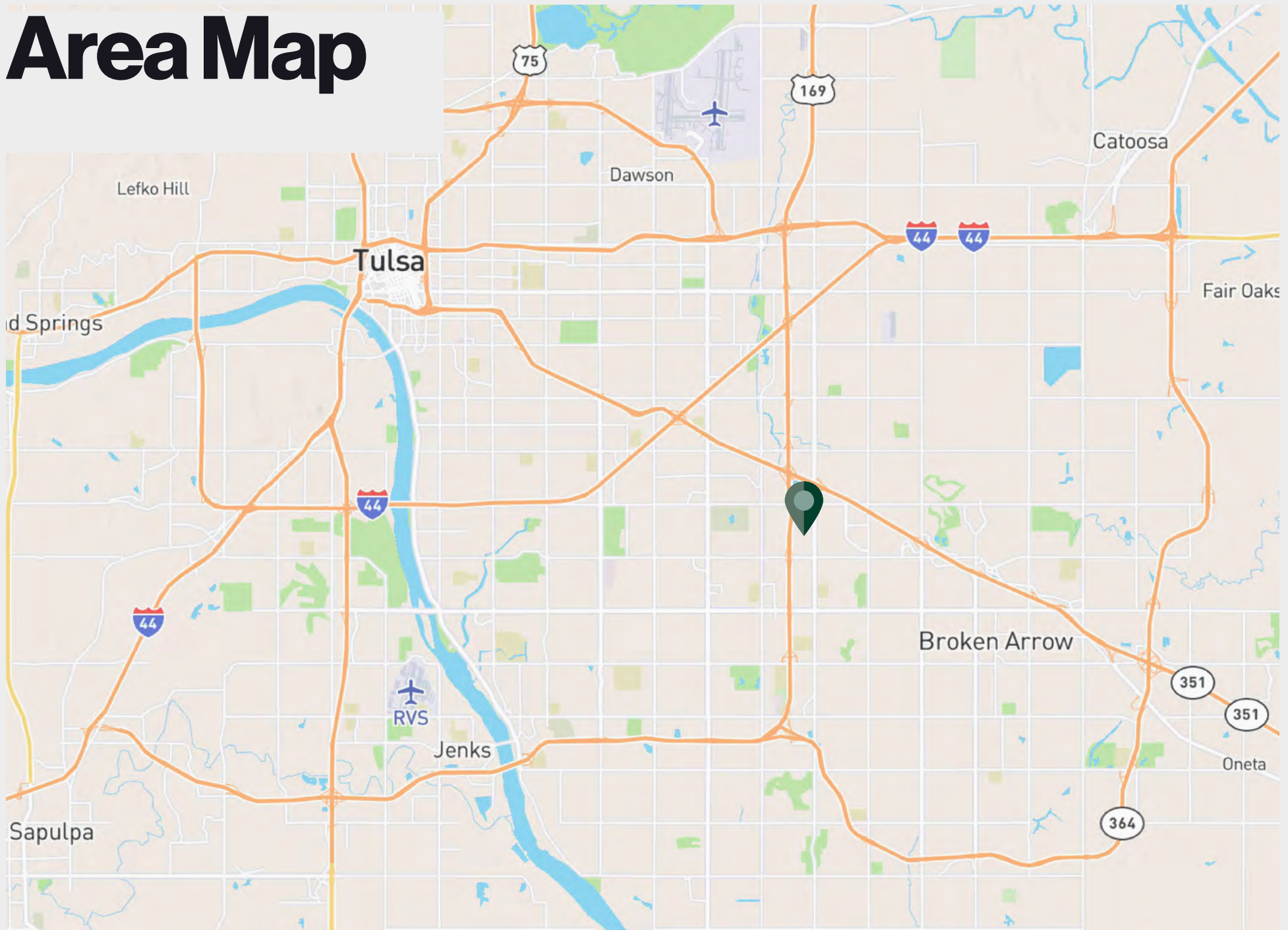
\$0.95 of additional GDP added
to the local economy for every
\$1 of production

Source: Tulsa Regional Chamber

Location Aerial



Area Map



10910 E 55TH PLACE / TULSA, OK 74146

Industrial Building

14,354± SF for Sale

Jamie Hill, SIOR, CCIM

First Vice President

+1 918 392 7206

jamie.hill@cbre.com

Spencer Sheets

Senior Associate

+1 918 392 7240

spencer.sheets@cbre.com

CBRE

© 2025 CBRE, Inc. All rights reserved. This information has been obtained from sources believed reliable but has not been verified for accuracy or completeness. CBRE, Inc. makes no guarantee, representation or warranty and accepts no responsibility or liability as to the accuracy, completeness, or reliability of the information contained herein. You should conduct a careful, independent investigation of the property and verify all information. Any reliance on this information is solely at your own risk. CBRE and the CBRE logo are service marks of CBRE, Inc. All other marks displayed on this document are the property of their respective owners, and the use of such marks does not imply any affiliation with or endorsement of CBRE. Photos herein are the property of their respective owners. Use of these images without the express written consent of the owner is prohibited.