

WAREHOUSE & OFFICE FOR SUBLEASE

13521 E Trent Ave, Spokane Valley, WA



Rob Christiansen

+1 509 200 4774

Robert.Christiansen@jll.com

WA RE License #24028647

Jared Smith

+1 509 505 7459

j.smith@jll.com

WA RE License #20118285



Jones Lang LaSalle Brokerage, Inc. Real Estate License #: 01856260

Property Overview

Prime industrial property located near I-90. This 4.06-acre site features a warehouse and two office buildings. The property provides convenient dual access points and a secured gate for enhanced security. Current lease extends to January 31, 2027, with a monthly rate of \$10,611/NNN.

Office 1:

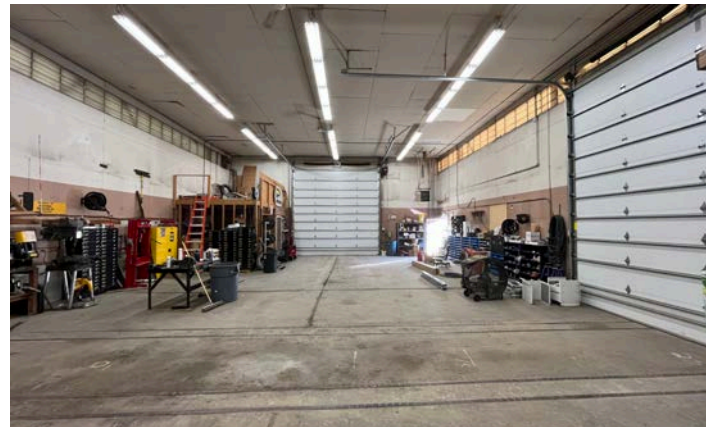
- Size: ±1,409
- 3 Private Offices
- Bathroom

Office 2:

- Size: ±1,330
- 3 Private Offices
- Break room
- Bathroom

Warehouse:

- Size: ±2,223
- Ceiling Heights: 18'5"
- Roll Up Doors: 2 doors 17'
- 1 Office
- Bathroom



Rob Christiansen

+1 509 200 4774

Robert.Christiansen@jll.com

WA RE License #24028647

Jared Smith

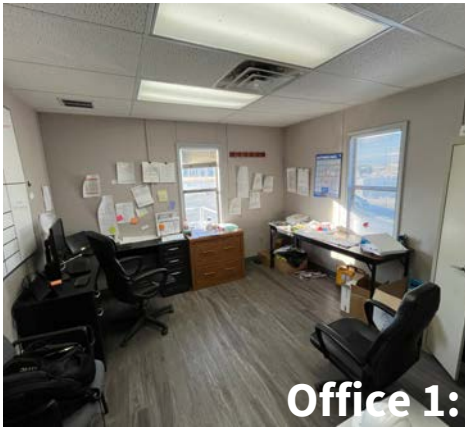
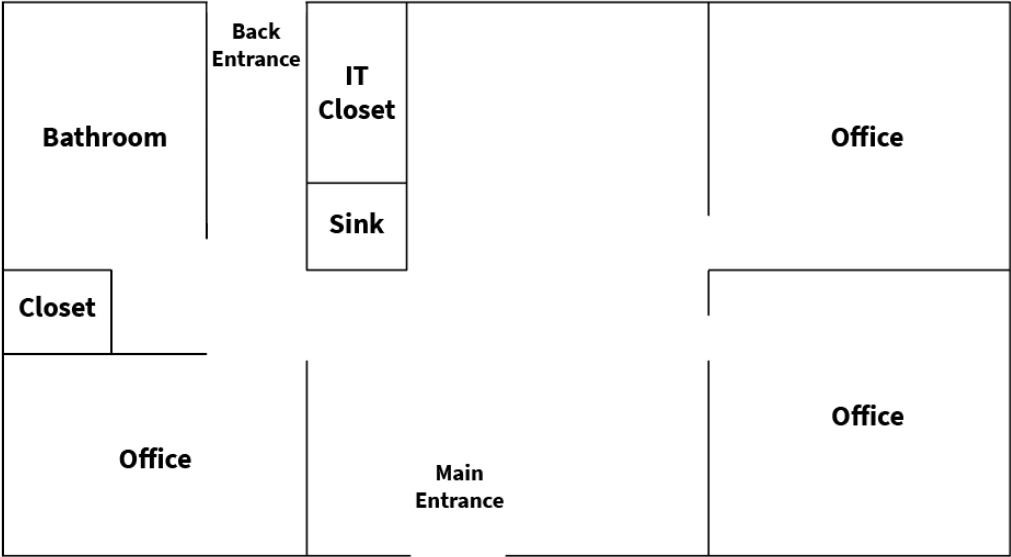
+1 509 505 7459

j.smith@jll.com

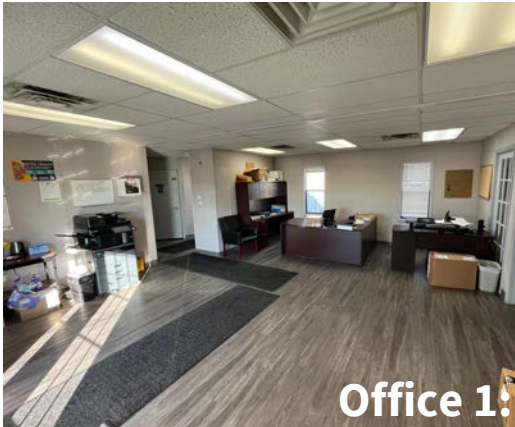
WA RE License #20118285



Office 1:



Office 1:



Office 1:

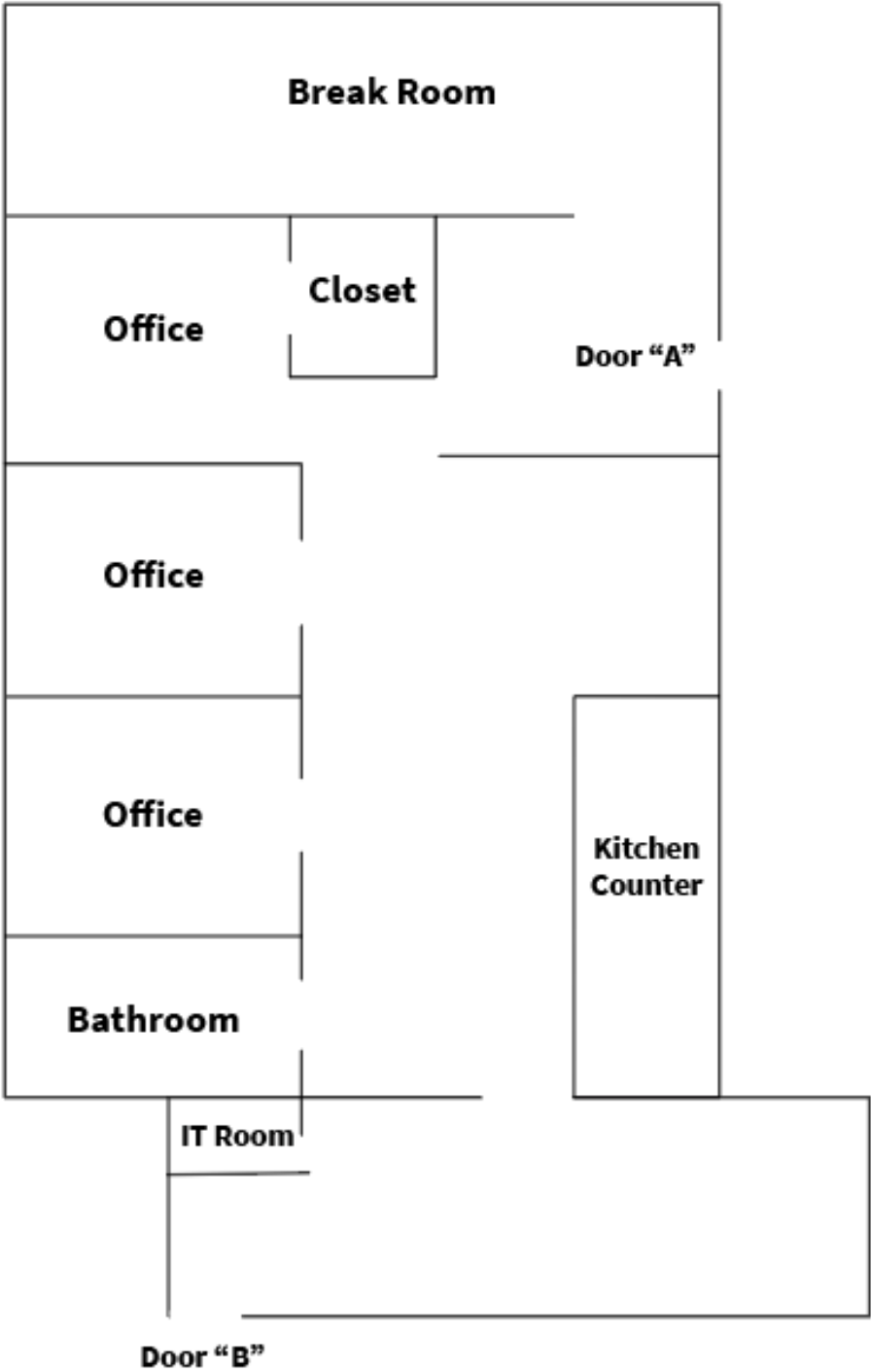


Office 2:



Office 2:

Office 2:





Rob Christiansen

+1 509 200 4774

Robert.Christiansen@jll.com

WA RE License #24028647

Jared Smith

+1 509 505 7459

j.smith@jll.com

WA RE License #20118285



Although information has been obtained from sources deemed reliable, neither Owner nor JLL makes any guarantees, warranties or representations, express or implied, as to the completeness or accuracy as to the information contained herein. Any projections, opinions, assumptions or estimates used are for example only. There may be differences between projected and actual results, and those differences may be material. The Property may be withdrawn without notice. Neither Owner nor JLL accepts any liability for any loss or damage suffered by any party resulting from reliance on this information. If the recipient of this information has signed a confidentiality agreement regarding this matter, this information is subject to the terms of that agreement. ©2024. Jones Lang LaSalle IP, Inc. All rights reserved.