

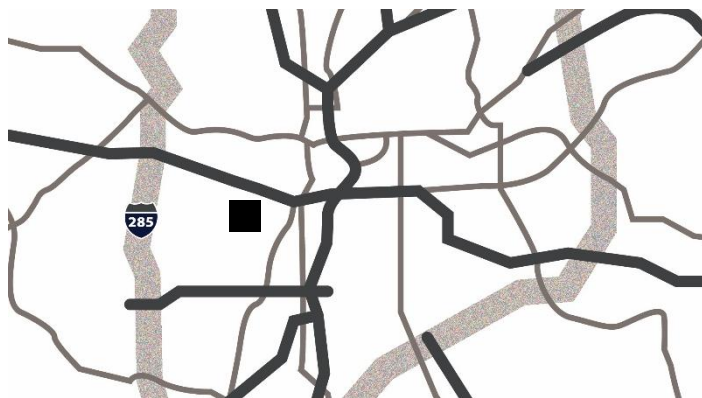


## 2740 S. Cobb Industrial, Smyrna, GA

### Opportunity

Available Space:	8,000 SF
Office Space:	1,283 SF
Total Bldg Size:	24,000 SF
Clear Height:	15'
Bay Size:	37'6 x 26'8
Dock Doors:	2 (8' x 10') DH, 1 Roll-up
Power:	200 amps, 110/208v

### Location



**10** Miles to  
Airport



**1** Miles to  
I-75



**8.3** Miles to  
I-285

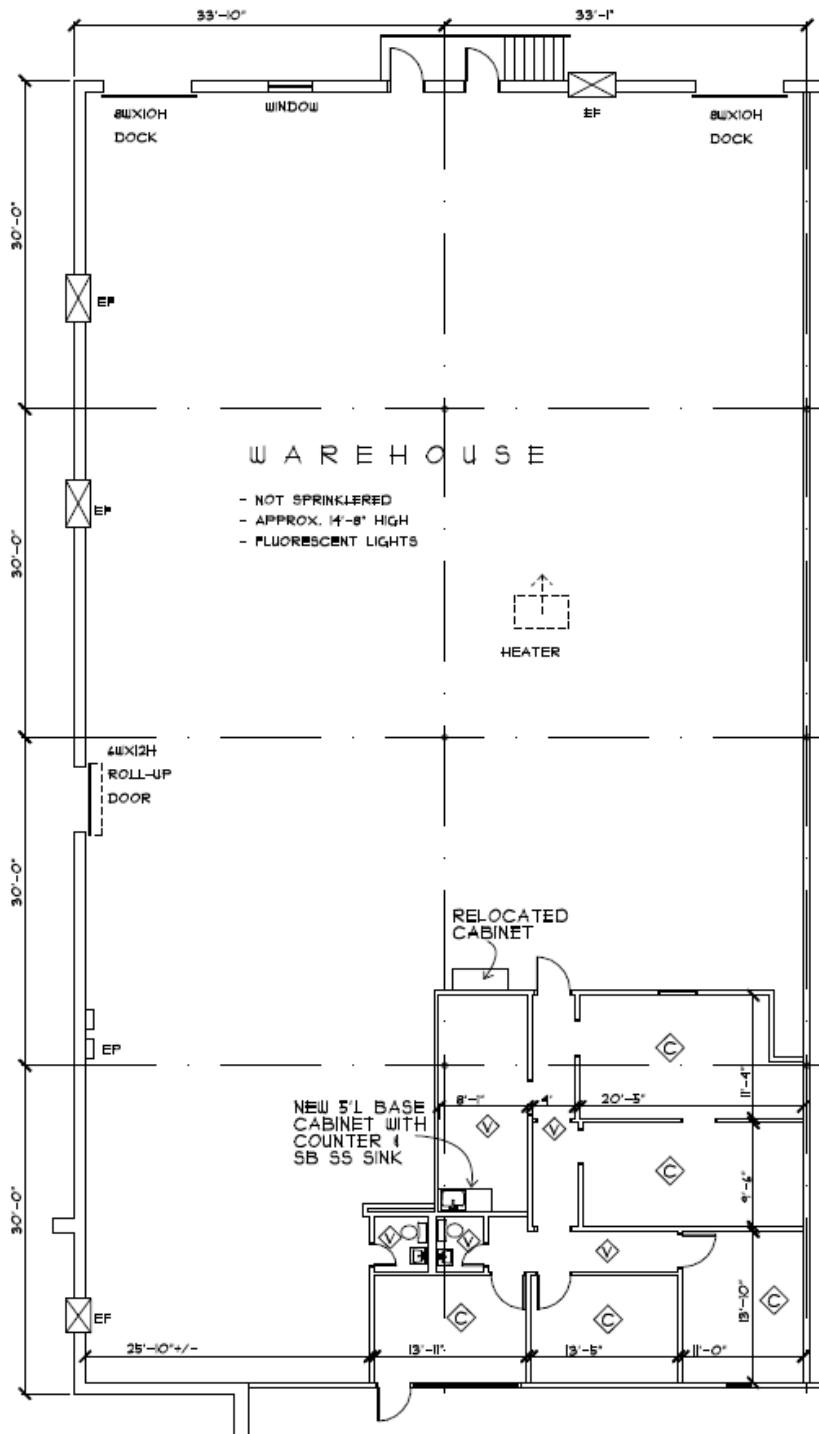
**For further  
information**

**Bruce Logue**  
Principal  
+1 770 916 6150

[avisonyoung.com](http://avisonyoung.com)

## Industrial For Lease

2740 S. Cobb Industrial Blvd., Smyrna, GA



For further information



**Bruce Logue**  
Principal  
+1 770 916 6150  
bruce.logue@avisonyoung.com

Owned by:

