

AVAILABLE

Turner Business Center

219-247 Turner Road North Chesterfield, VA 23225



Exclusive Agent:

WILSON FLOHR, SIOR
(804) 521-1458
wilson@porterinc.com

BYRON HOLMES, CCIM, SIOR
(804) 521-1448
byron@porterinc.com

4801 Radford Avenue | P.O. Box 6482
Richmond, VA 23230
www.porterinc.com
804-353-7994

COMING SOON - 4/1/2026

- UNITS 219-221: 4,500 SF
- UNIT 243: 2,250 SF
- Professional Business Park
- Opportunity Zone & Technology Zone Location
- Zoned C-4: Retail, Office, Flex Uses Allowed
- Roll-Up Door 9' x 8'
- Curbside Loading (Concrete Drive-In Ramp)
- 15' - 18' Ceilings
- 208 Volt 3 Phase Electrical Service
- Immediate Access to Chippenham Parkway, Powhite Parkway, & Downtown Richmond
- Located off Midlothian Turnpike (Rt 60)
- For Lease: \$13.50/SF IG (subject to term)

PORTER
R E A L T Y

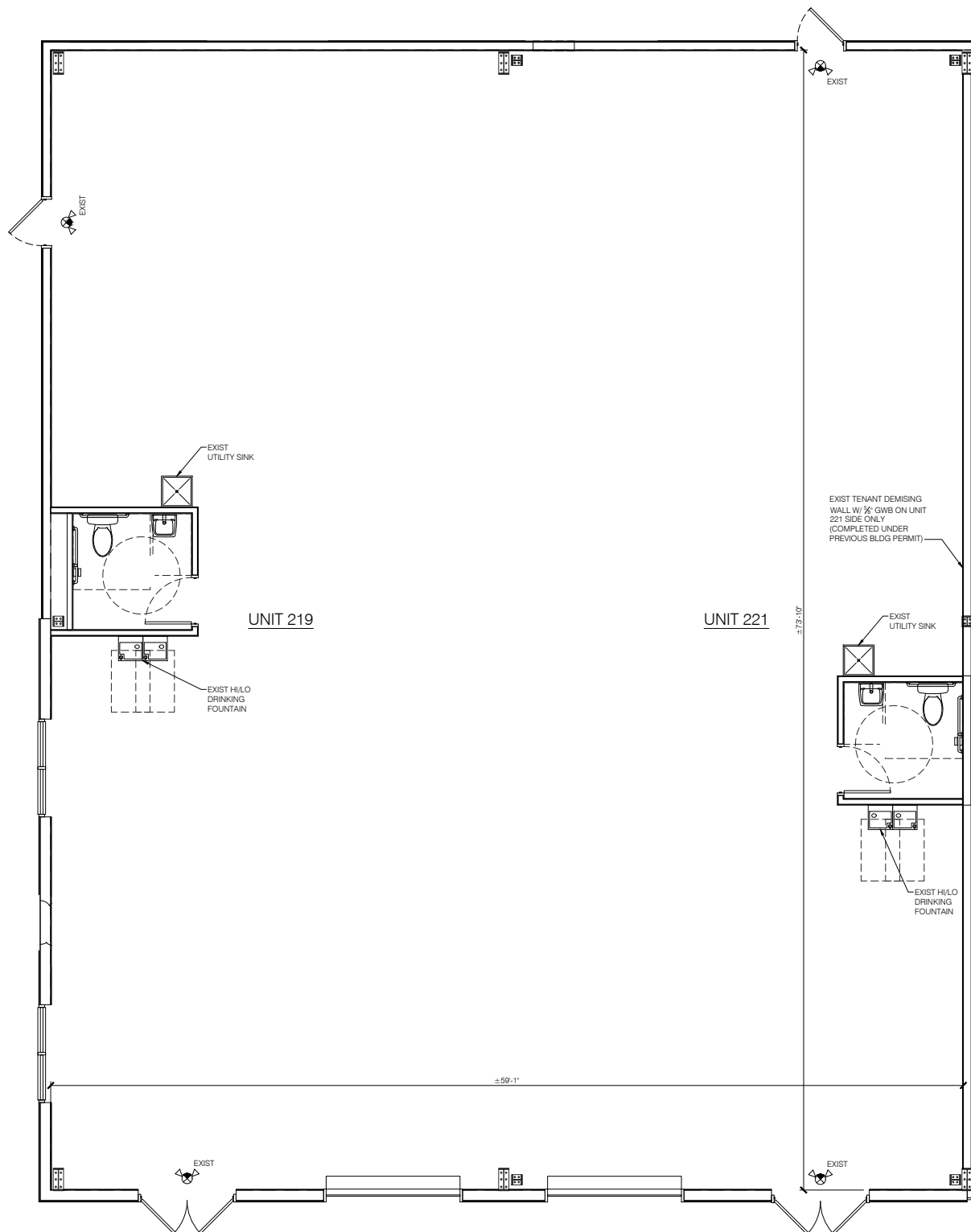


This information has been prepared by Porter Realty Company, Inc. for marketing purposes only. No representation or warranty, expressed or implied, is made as to the accuracy of the foregoing information. Terms of sale or lease and availability are subject to change or withdrawal without notice.

UNITS 219-221

219 - 247 Turner Road | North Chesterfield, VA 23225

Turner Road Business Center



Wilson Flohr, SIOR
(804) 521-1458
wilson@porterinc.com

Byron Holmes, CCIM, SIOR
(804) 521-1448
byron@porterinc.com



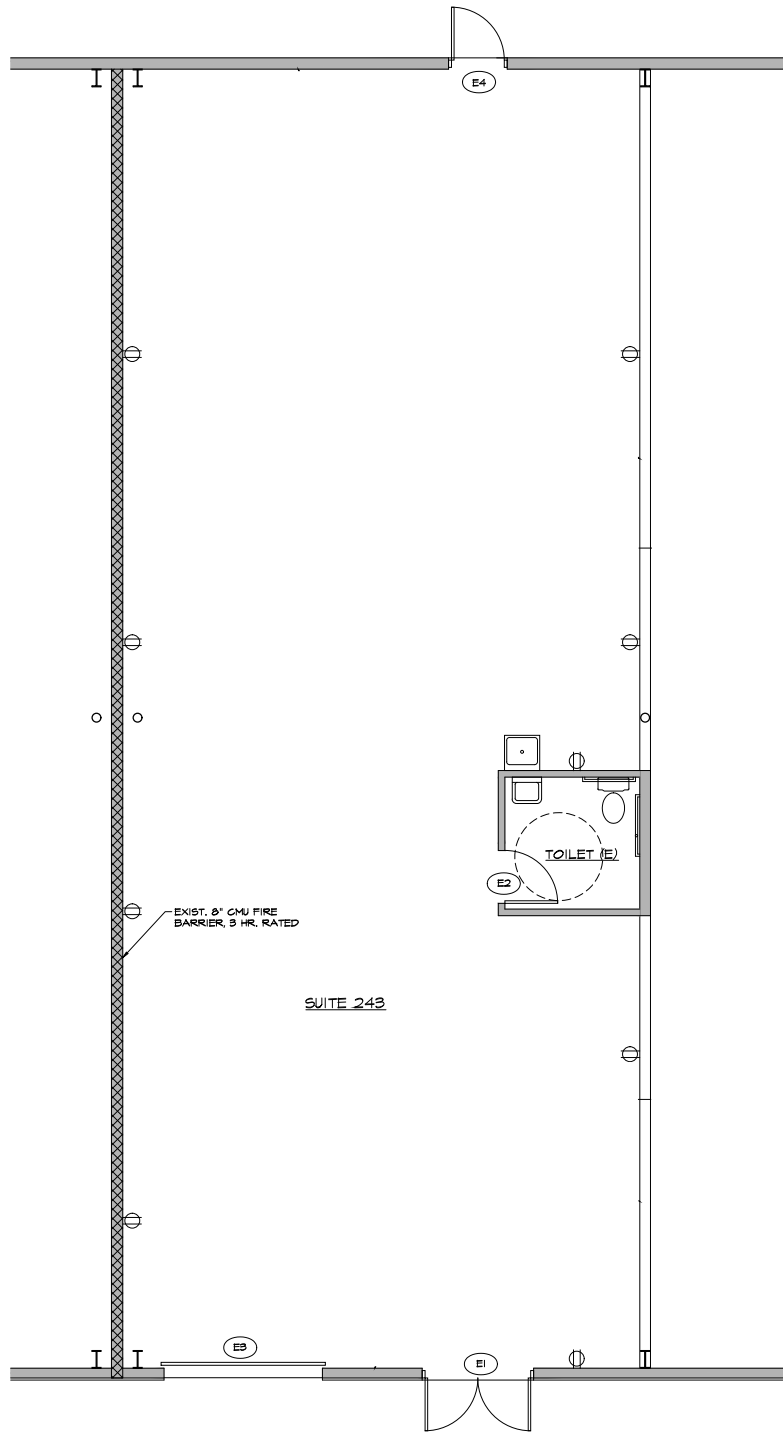
Porter Realty Company, Inc. | 4801 Radford Avenue | P.O. Box 6482 | Richmond, VA 23230 | www.porterinc.com

This information has been prepared by Porter Realty Company, Inc. for marketing purposes only. No representation or warranty, expressed or implied, is made as to the accuracy of the foregoing information. Terms of sale or lease and availability are subject to change or withdrawal without notice.

UNIT 243

219 - 247 Turner Road | North Chesterfield, VA 23225

Turner Road Business Center



1 TENANT PLAN

1/4" = 1'-0"

Wilson Flohr, SIOR
(804) 521-1458
wilson@porterinc.com

Byron Holmes, CCIM, SIOR
(804) 521-1448
byron@porterinc.com

Porter Realty Company, Inc. | 4801 Radford Avenue | P.O. Box 6482 | Richmond, VA 23230 | www.porterinc.com

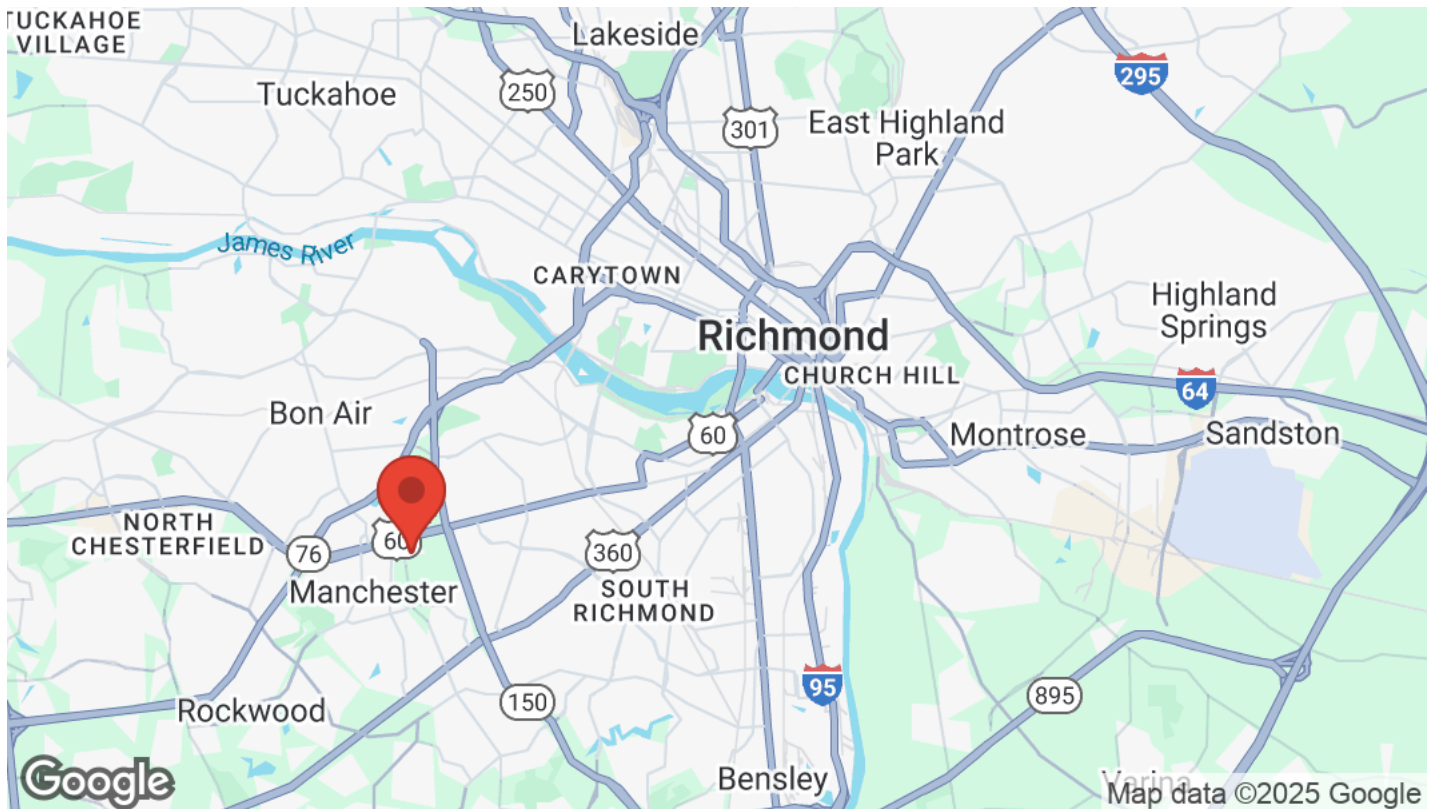


This information has been prepared by Porter Realty Company, Inc. for marketing purposes only. No representation or warranty, expressed or implied, is made as to the accuracy of the foregoing information. Terms of sale or lease and availability are subject to change or withdrawal without notice.

LOCATION MAPS

219 - 247 Turner Road | North Chesterfield, VA 23225

Turner Road Business Center



Wilson Flohr, SIOR
(804) 521-1458
wilson@porterinc.com

Byron Holmes, CCIM, SIOR
(804) 521-1448
byron@porterinc.com



Porter Realty Company, Inc. | 4801 Radford Avenue | P.O. Box 6482 | Richmond, VA 23230 | www.porterinc.com

This information has been prepared by Porter Realty Company, Inc. for marketing purposes only. No representation or warranty, expressed or implied, is made as to the accuracy of the foregoing information. Terms of sale or lease and availability are subject to change or withdrawal without notice.