

1055-59 Flushing Ave: 2023RSF-6321RSF Available Prime Retail/Office/Medical/Health & Wellness



1055-59 Flushing Ave, Ground Floor Retail

ASKING RENT: \$7,250-26,500/MONTH | PPSF: ~\$43.28-\$50

2023-6,321RSF, Combination or Stand Alone

SEE MORE ON CORCORAN.COM: WEB# 22462877

Experienced operators are welcome and preferred! 1055-1057 Flushing Ave - Incredible opportunity to combine up to 6,321RSF for a flagship location offering almost 70FT of commercial frontage including a curb cut in the most desirable retail corridor in East Williamsburg bordering prime Bushwick.

Ownership is delivering the space in white box condition. All uses are considered from retail, restaurant, bar, QSR, food & beverage, health & wellness, tech, studio/film production, logistics, creative, office, medical, community facility, etc.

This amazing location is just a few short blocks from the Morgan Ave/Jefferson St (L) & Central Ave (M) Subway stations. Prominent tenants nearby include Netflix, Rivian, Elsewhere, Brooklyn Made, Ichiran, Sea Wolf, Bunker, Honey, Fine & Raw Chocolate, Roberta's, House of Yes, just a name a few. Major retailers & national tenants are starting to settle in this trendy neighborhood.

The Forray Team at The Corcoran Group

CHRIS CAVORTI | EVAN F. CHURCH | MARVIN CHU | DONALD LAI

REAL ESTATE WITH RESULTS

CHRIS CAVORTI
Lic. Associate RE Broker
(m) 914.804.7091
ccavorti@corcoran.com

EVAN F. CHURCH
Lic. Associate RE Broker
(m) 917.684.0663
echurch@corcoran.com

MARVIN CHU
Lic. Associate RE Broker
(m) 718.685.9430
mchu@corcoran.com

DONALD LAI
Lic. Associate RE Broker
(m) 917.947.9917
dlai@corcoran.com

  Follow @theforraygroup on social media for all things real estate related...

More Photos – Virtual Staged



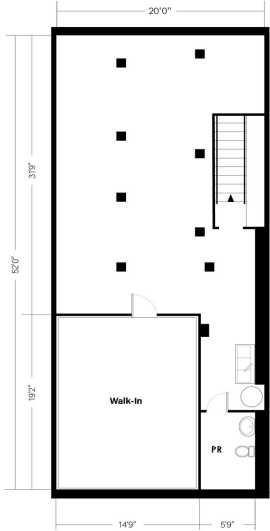
More Photos



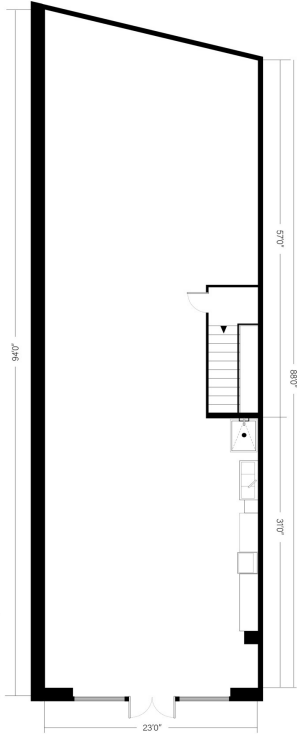
Building Exterior & Floorplan

corcoran

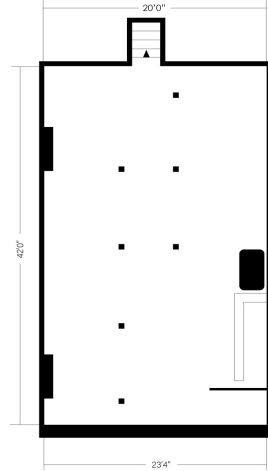
1055 | 1057 | 1059 Flushing Ave | Brooklyn



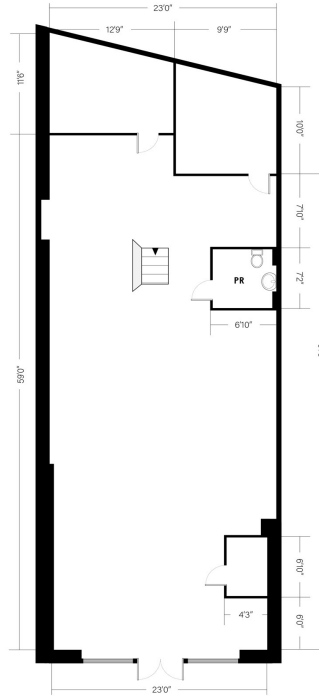
1055 Flushing - Basement
Ceiling Height: 8'4"



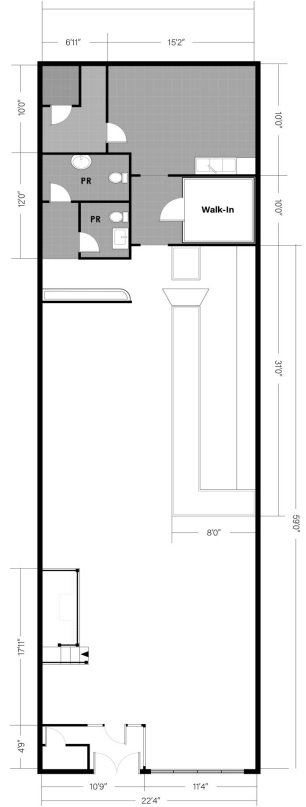
1055 Flushing - Street Level
Ceiling Height: 12'0"



1057 Flushing - Basement
Ceiling Height: 6'9"



1057 Flushing - Street Level
Ceiling Height: 11'8"



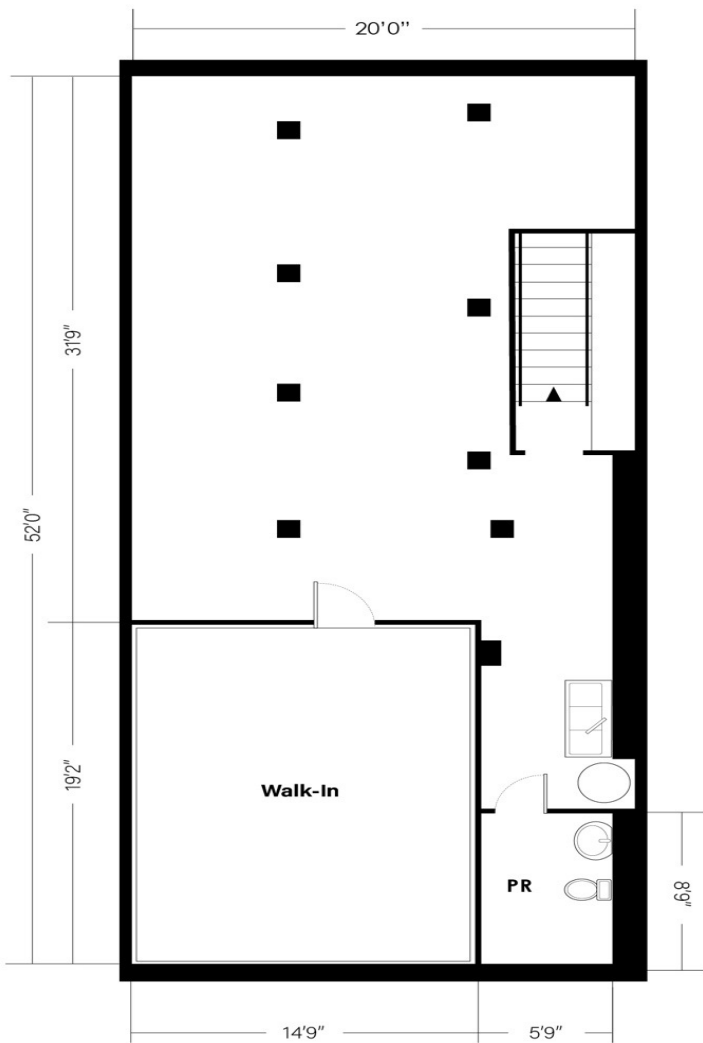
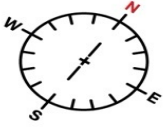
1059 Flushing - Street Level
Ceiling Height: 13'0"



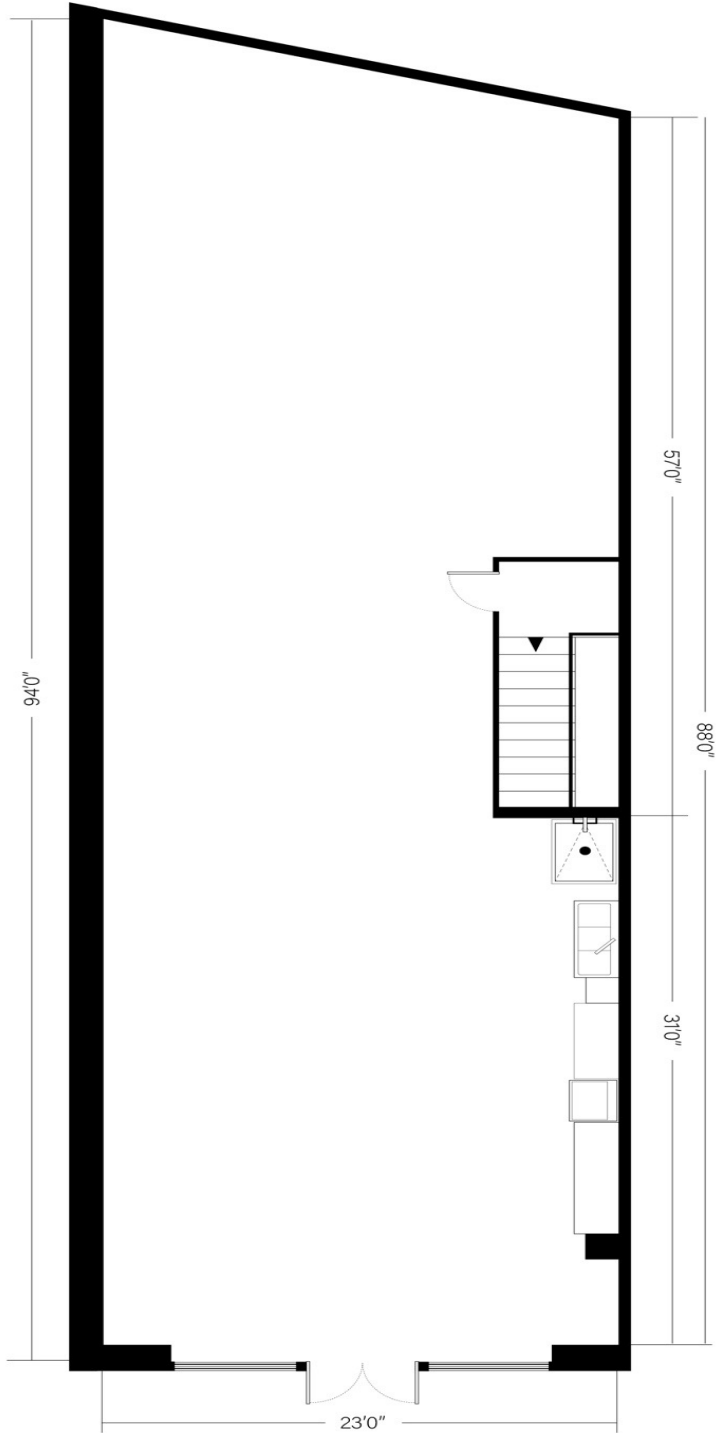
1055 Flushing Ave - Floorplan

corcoran

1055 Flushing Ave | Brooklyn



1055 Flushing - Basement
Ceiling Height: 6'4"

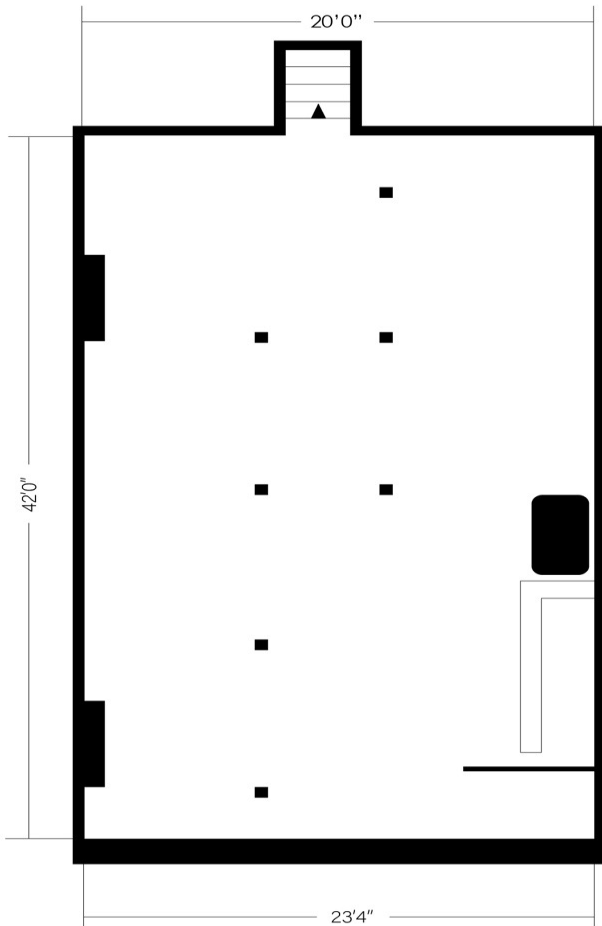
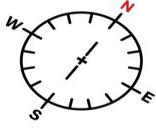


1055 Flushing - Street Level
Ceiling Height: 12'0"

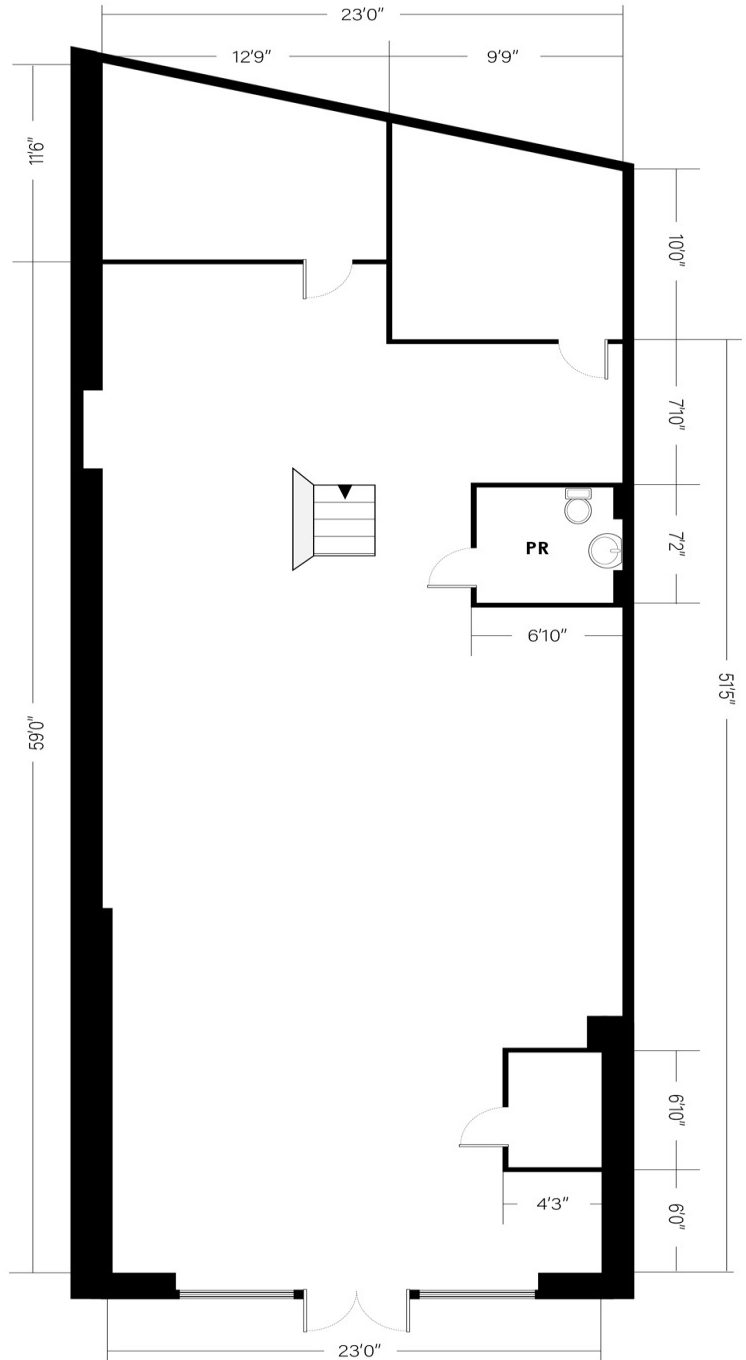
1057 Flushing Ave - Floorplan

corcoran

1057 Flushing Ave | Brooklyn



1057 Flushing - Basement
Ceiling Height: 6'9"

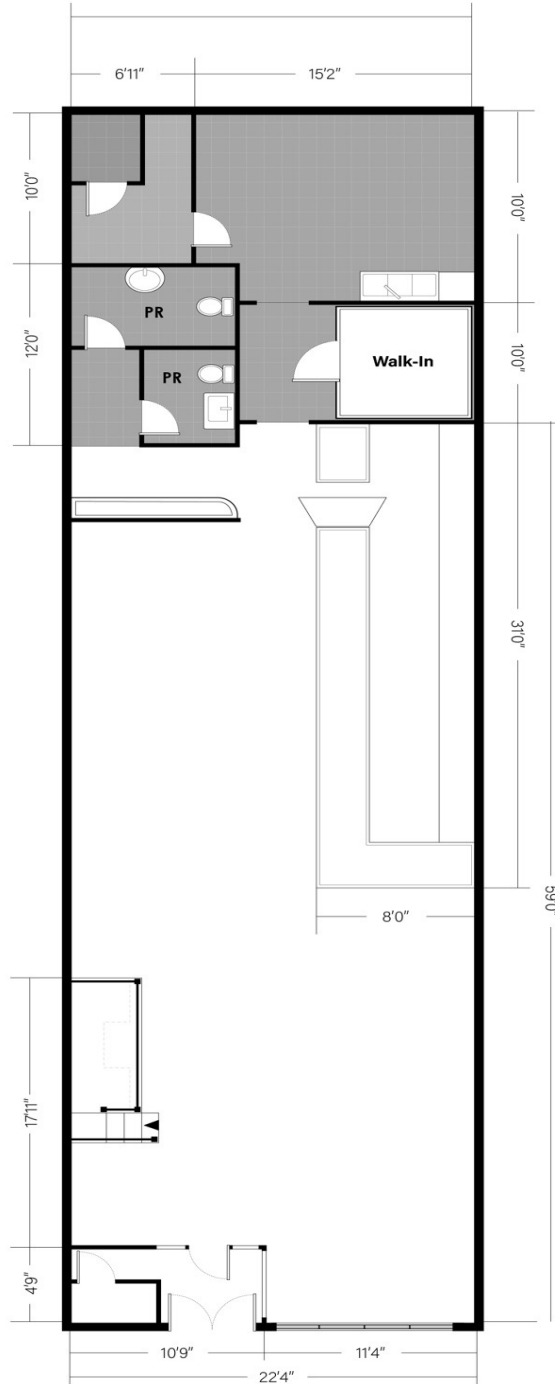


1057 Flushing - Street Level
Ceiling Height: 11'8"

1059 Flushing Ave - Floorplan

corcoran

1055 Flushing Ave | Brooklyn



1059 Flushing - Street Level
Ceiling Height: 13'0"

Curb Cut-Out

FLUSHING AVENUE