



For Lease

Industrial

74,582 SF



3670 S Perkins Rd

Memphis, Tennessee 38118

Property Features

- 74,582 SF
- Office area: 3,278 SF
- 18' Clear Ceiling Height
- 6 Dock Doors | 1 Drive-In Door
- 100% HVAC
- Heavy Power: 2,195 amps, 3 phase
- Secure Parking on the North Side of the Building
- Sprinkler Density: .324 over 2,400 SF
- Located 4 miles from the Memphis International Airport, the FedEx Hub, and the UPS Hub
- Close to the BNSF Railway Intermodal
- Call for Lease Rate



For more information:

Brian Califf, CCIM

901 526 3100 • bcaliff@saigcompany.com

Elliot Embry, SIOR

901 526 3100 • eembry@saigcompany.com

NO WARRANTY OR REPRESENTATION, EXPRESS OR IMPLIED, IS MADE AS TO THE ACCURACY OF THE INFORMATION CONTAINED HEREIN, AND THE SAME IS SUBMITTED SUBJECT TO ERRORS, OMISSIONS, CHANGE OF PRICE, RENTAL OR OTHER CONDITIONS, PRIOR SALE, LEASE OR FINANCING, OR WITHDRAWAL WITHOUT NOTICE, AND OF ANY SPECIAL LISTING CONDITIONS IMPOSED BY OUR PRINCIPALS NO WARRANTIES OR REPRESENTATIONS ARE MADE AS TO THE CONDITION OF THE PROPERTY OR ANY HAZARDS CONTAINED THEREIN ARE ANY TO BE IMPLIED.

NAI Saig Company

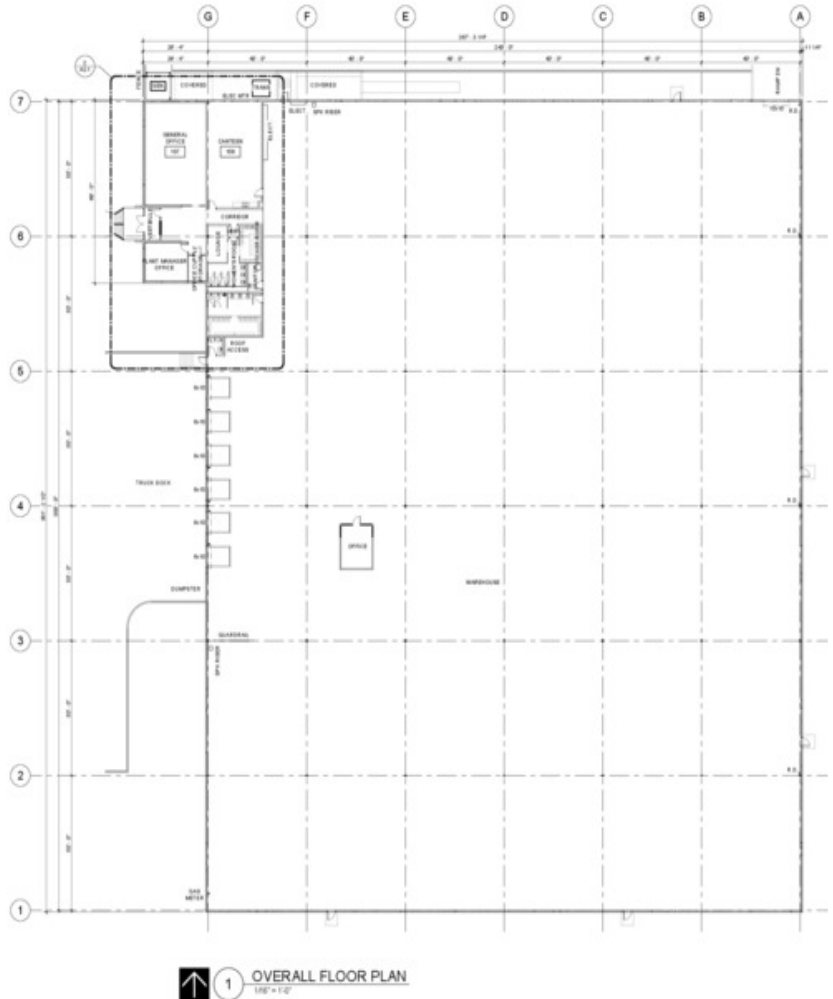
6263 Poplar Avenue Suite 150, Memphis, TN 38119

901 526 3100

saigcompany.com

For Lease

Industrial



AREA SCHEDULE	
NAME	AREA
RECEIPIVABLE AREA	1,740 SF
OFFICE AREA	1,740 SF
STORAGE	1,740 SF