

Quality Space To Grow Your Business

RETAIL / RESTAURANT SPACE AVAILABLE

The Plaza at Centerstone is an upscale retail and lifestyle center like none other in Conway. With an outdoor courtyard and water feature welcoming you as you enter, this prime location offers exciting opportunities within the thriving and rapidly growing Centerstone community—making it the perfect place for your business to flourish.



Phase II Availability

Suite 201 ■ 6,000 SF \$20/FT,NNN

Leasing fee available.

Why Choose us?

- Maximum Visibility & Access Location
- Rapidly Expanding Residential & Retail
- Quick Access to I-40 & Major Intersections
- Across from UCA - 10,000+ Students & Faculty
- 750+ Apartments Within Walking Distance

Conway, AR
Demographics



Population
73,068



Avg. HH Income
\$83,756

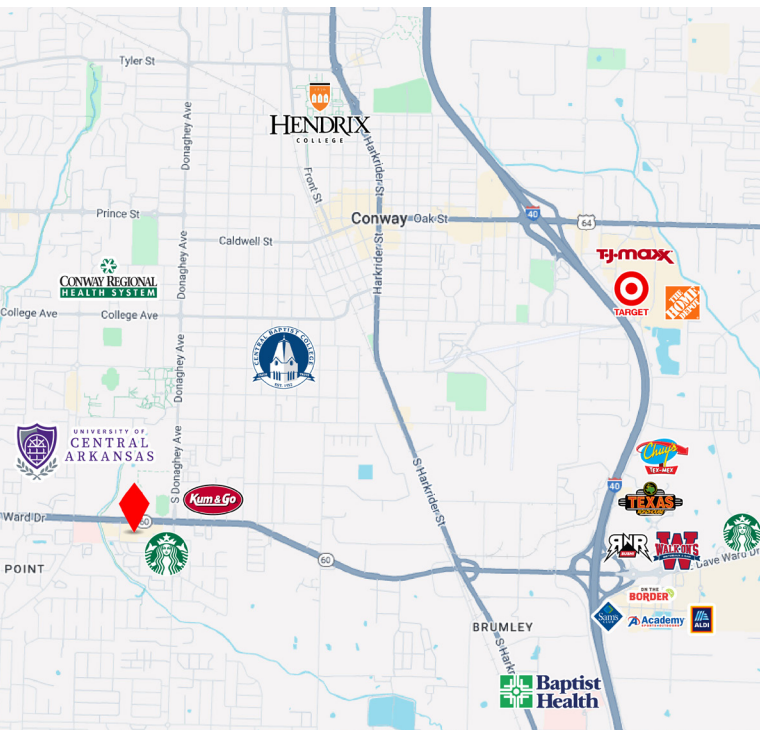


Dave Ward Dr.
Traffic Count
35,000+



the plaza at CENTERSTONE

2235 Dave Ward Dr,
Conway, AR



Phase II

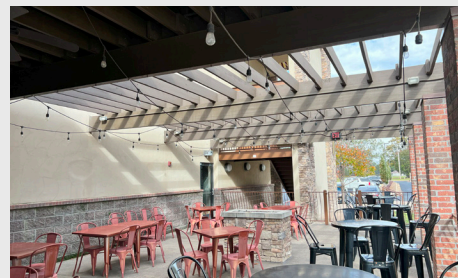
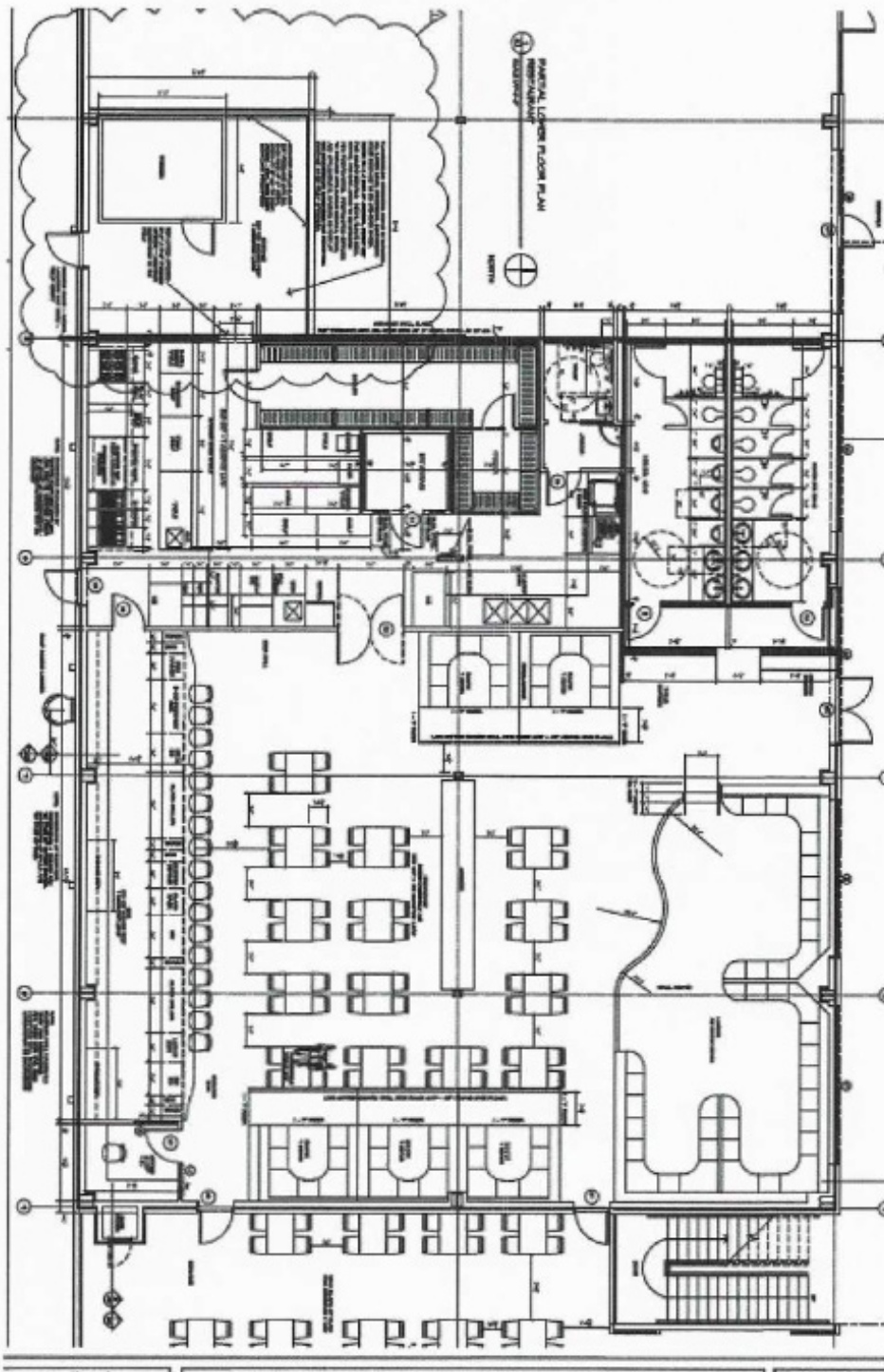
Suite 201
6,000 SF

Key Features

- Final Suite Available
- Patio Seating with Courtyard Fountain Feature
- Outdoor Dining and Built-in Fire Pit
- Ample On-site Parking

the plaza at CENTERSTONE

2235 Dave Ward Dr,
Conway, AR



Suite 201

Floorplan

