

GREENWICH
VILLAGE

NEW YORK
NY

99 UNIVERSITY PLACE



SPACE DETAILS

LOCATION

Southeast corner of East 12th Street

APPROXIMATE SIZE

Ground Floor	2,709 SF
Basement	1,338 SF
Total	4,047 SF

POSSESSION

Immediate

TERM

Through September 2020

FRONTAGE

35 FT on University Place
65 FT on East 12th Street

SITE STATUS

Formerly Denim & Supply

NEIGHBORS

Sweetgreen, Nutella Cafe, European Wax Center, The Grey Dog Cafe, Argo Tea, Agata & Valentina and Blue Bottle Coffee

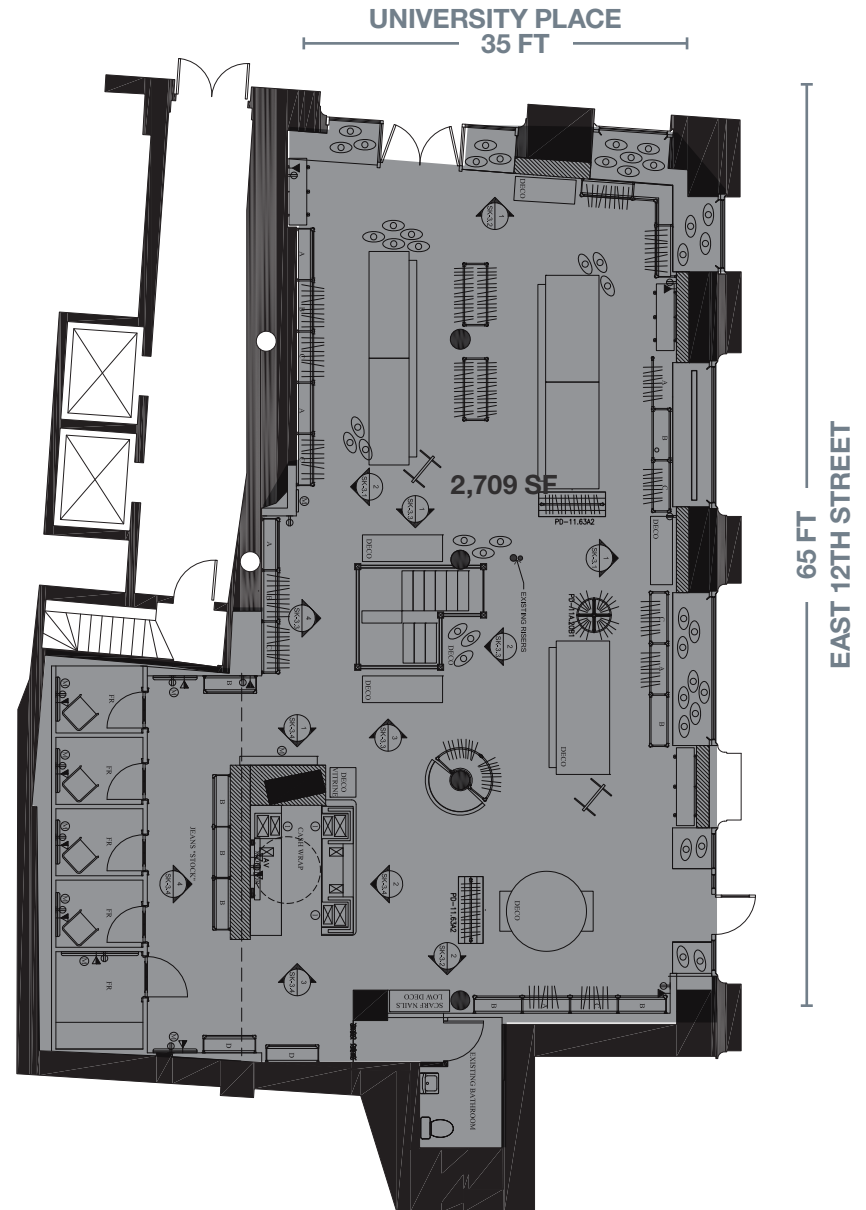
COMMENTS

This space is being offered for sublease by Ralph Lauren Corporation

Located across the street from Billy Macklowe's 52-unit retail and residential development at 21 East 12th Street

Dry uses preferred

GROUND FLOOR



AREA RETAIL



+ COMING SOON

CONTACT EXCLUSIVE AGENTS

ROBERT COHEN
212.331.0117
rcohen@rkf.com

PETER WHITENACK
212.331.0128
pwhitenack@rkf.com



NGKF.COM



RKF.COM