



# SCHRAFFET'S

City Center

529 MAIN ST, CHARLESTOWN

AVISON  
YOUNG



This **legendary**  
building was formerly  
the manufacturing site  
of the **iconic**  
**SCHRAFFT'S**  
**CANDY FACTORY**



It was purchased and renovated by The Flatley Company in 1984. The building is considered a Boston landmark with its distinctive neon sign and beautiful water views. *The 529 Main Street building has a beautiful new entrance, lobby, waterfront and landscaping upgrades.*



The Schrafft Center complex also includes an office building at 465 Medford Street and an industrial building at 425 Medford Street. The 465 Medford Street building has recently been renovated with a brand new lobby, entrance and landscaping upgrades.



# BUILDING amenities



- On-site property management team
- Indoor & outdoor covered bike storage at 529 Main Street & 465 Medford Street
- Seasonal Rooftop Farming
- Sponsored events at building, & adjacent athletic fields
- Waterfront walking trail

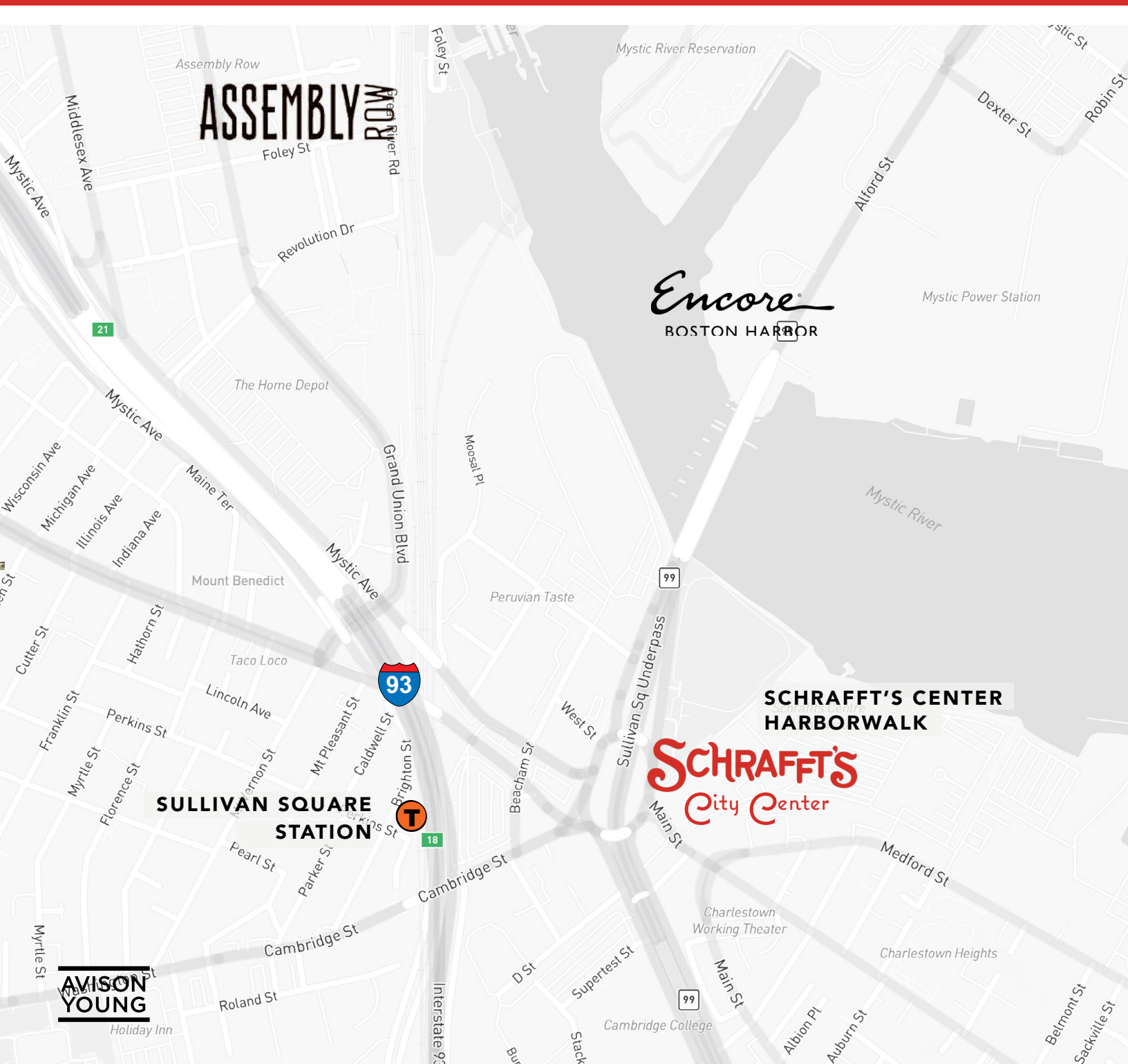


- FIT Gym
- Cafeteria – hours of operation:  
7 am- 2 pm
- Coffee Bar – hours of operation:  
7 am- 2 pm
- Bright Horizons Child Care Center



Schrafft's boasts a prime location with convenient access to a variety of shopping options, from large retail centers to boutique shops, catering to both daily necessities and specialty items. Nearby, a diverse selection of restaurants, ranging from cozy cafes to upscale dining establishments, provides a wide range of culinary experiences.

For visitors or business travelers, several hotels in the vicinity offer comfortable lodging with easy access to the office park. Parents can find nearby childcare facilities providing professional care and educational activities,



# LOCAL amenities

- Adjacent to the Sullivan Square MBTA Station
- Just over ¼ mile to nearest BLUEbikes station
- Easy access to I-93, downtown Boston, Kendall Square & Logan Airport
- Close proximity to the Assembly Square shopping district & Encore Boston Harbor Casino



**FIRST FLOOR**  
mezzanine

**THREE SUITES**  
**AVAILABLE**



**15,608 SF**  
**SUITE 1105**

**2,500 SF**  
**SUITE 1113**

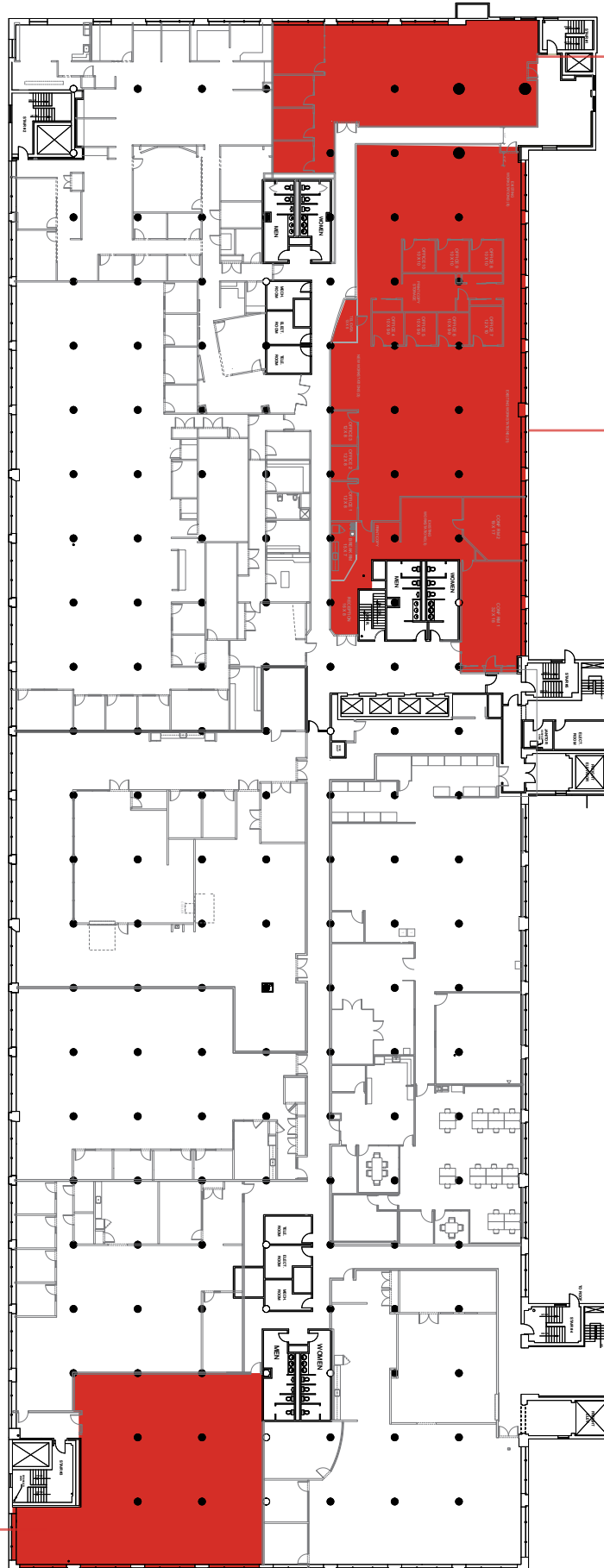
**1,849 SF | SPEC**  
**SUITE 1112**





# THIRD FLOOR

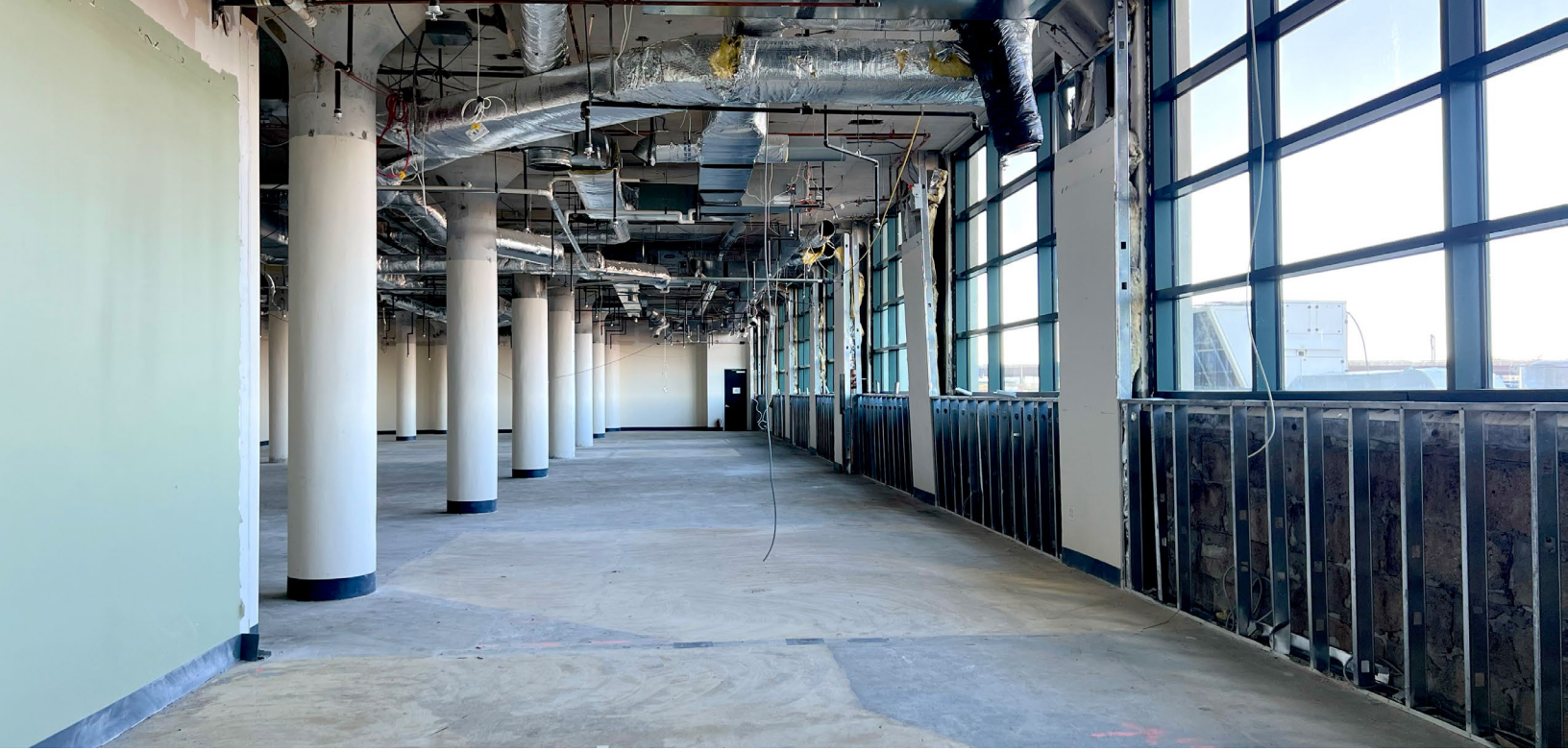
THREE SUITES  
AVAILABLE



4,328 SF  
SUITE 3304

10,475 SF  
SUITE 3302

5,412 SF  
SUITE 3321



**KIRK WELLER**

Senior Vice President

781 733 7814

kirk.weller@avisonyoung.com

**JONATHAN VACCA**

Vice President

617 620 9403

jonathan.vacca@avisonyoung.com