



**COMMERCIAL
REAL ESTATE**
the sign of a profitable property



PRIME RETAIL, OFFICE AND CAFE LOCATION IN DOWNTOWN INGLEWOOD

100-112 South Market Street, Inglewood, CA 90301



**COMMERCIAL
REAL ESTATE**

JOSEPH GOBERT
(818) 514-3494 | jgobert@illicre.com
DRE#01900768

GREG OFFSAY, CCIM
(818) 697-9387 | greg@illicre.com
DRE#01837719



5945 CANOGA AVENUE, WOODLAND HILLS, CA 91367 - 818.501.2212/PHONE - www.illicre.com - DRE #01834124

PROPERTY FEATURES

100-112 South Market Street, Inglewood, CA 90301







APPROX. 820-12,000 SF

RETAIL & OFFICE SPACES AVAILABLE

- ✓ Unit 300 | ± 1,500 -12,000 SF | 2nd floor offices
- ✓ Unit 306 | ± 820- 1,640 SF | ground floor retail
- ✓ Unit 108 | ± 2,600 SF 2nd generation cafe with possibility of beer & wine license. Includes high exposed beam ceilings, two restrooms, and a large stockroom
- ✓ Remodeled façade and upgraded sign program
- ✓ On-site parking and adjacent city parking structure
- ✓ Do not to disturb the current tenant or discuss the lease with any staff or patrons

AREA AMENITIES

- ✓ Centrally located in developing in Downtown Inglewood
- ✓ Conveniently located two blocks east of Inglewood City Hall, police station and the County of Los Angeles Superior Court House
- ✓ Two blocks south of the future Metro Rail Station
- ✓ 1-mile from SoFi Stadium and Entertainment Complex and The Forum
- ✓ Convenient access to 405, 105, 10, and 110 Freeways

DEMOGRAPHICS	1 MILE	3 MILE	5 MILE
 Population	41,144	147,099	269,072
 Avg. HH Income	\$68,023	\$82,762	\$90,446
 Daytime Pop	38,040	139,095	253,068
 Traffic Count	± 27,279 CPD ON LA BREA AVE & E QUEEN ST		

RETAIL & OFFICE SPACES
INGLEWOOD, CA

SUITE 108

100-112 South Market Street, Inglewood, CA 90301



± 2,600 SF | 2ND GENERATION CAFE WITH POSSIBILITY OF BEER & WINE LICENSE



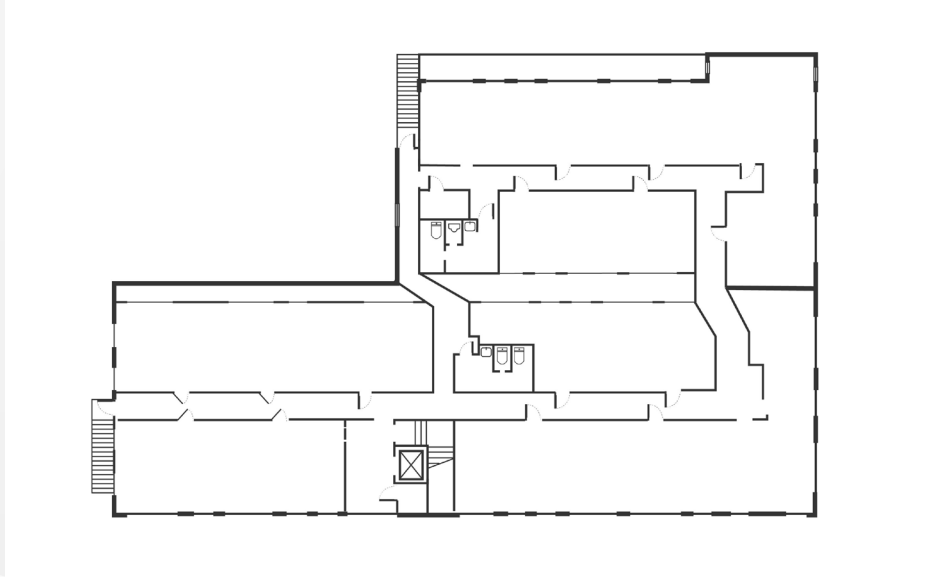
RETAIL & OFFICE SPACES
INGLEWOOD, CA

SUITE 300

100-112 South Market Street, Inglewood, CA 90301



± 1,500 -12,000 SF | SECOND FLOOR | OFFICE SPACE



RETAIL & OFFICE SPACES
INGLEWOOD, CA

SUITE 306

100-112 South Market Street, Inglewood, CA 90301



± 820 - 1,640 SF | FIRST FLOOR | RETAIL SPACE





AERIAL MAP



COMMERCIAL
REAL ESTATE

JOSEPH GOBERT
ASSOCIATE

(818) 514-3494 | jgobert@illicre.com
DRE#01900768

GREG OFFSAY, CCIM
EXECUTIVE VICE PRESIDENT

(818) 697-9387 | greg@illicre.com
DRE#01837719



5945 CANOGA AVENUE | WOODLAND HILLS, CA 91367 | 818.501.2212/PHONE | www.illicre.com | DRE #01834124

This information has been secured from sources we believe to be reliable, but we make no representations or warranties, expressed or implied, as to the accuracy of the information. References to square foot-age are approximate. References to neighboring retailers are subject to change, and may not be adjacent to the vacancy being marketed either prior to, during, or after leases are signed. Lessee must verify the information and bears all risk for any inaccuracies.