



TRANSWESTERN

REAL ESTATE
SERVICES

SAINT PAUL INDUSTRIAL PROPERTIES #35

2833 FAIRVIEW AVE N | ROSEVILLE, MN 55113

PROPERTY SPECIFICATIONS



Building Size: 9,800 SF

Availability: 9,800 SF Office/Lab Space

Loading: 1 Drive-In Door

Clear Height: 14'

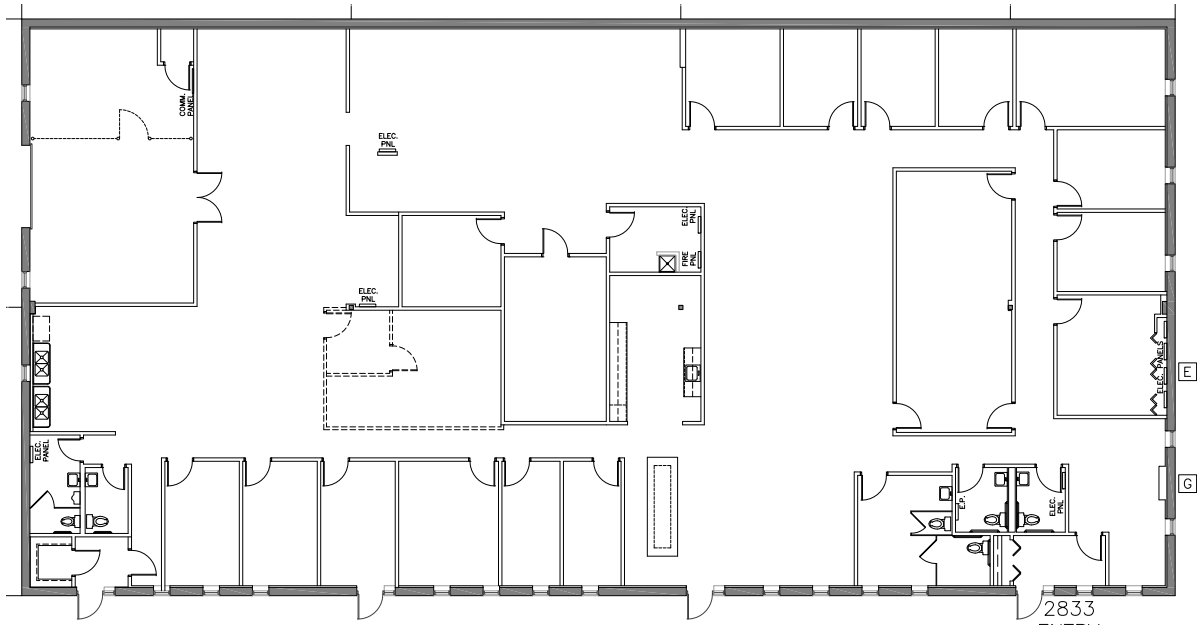
Lease Rates: \$10.00 PSF Office

Taxes: \$2.28 PSF (2023)

Operating Expenses: \$1.96 PSF (2023)



FLOORPLAN



SQUARE FEET

Office/Lab Space: 9,800 SF





TRANSWESTERN

REAL ESTATE
SERVICES

THINKING BEYOND THE OBVIOUS

ALEX BARON

612.359.1658

alex.baron@transwestern.com

JOHN THOMPSON, SIOR

612.359.1645

john.thompson@transwestern.com