

Lakeside by the Forum



— 5250 & 5390 Triangle Pkwy —
Peachtree Corners, GA 30092

NEWMARK

PROPERTY HIGHLIGHTS



**Fully Conditioned Flex
Spaces Available**



5250 Triangle - Suite 200: 6,924 RSF
5250 Triangle - Suite 300: 2,305 RSF
5390 Triangle - Suite 200: 16,328 RSF
5390 Triangle - Suite A: 5,130 RSF
5390 Triangle - Suite B: 7,072 RSF
5390 Triangle - Suite C: 3,316 RSF



\$13.50/SF NNN



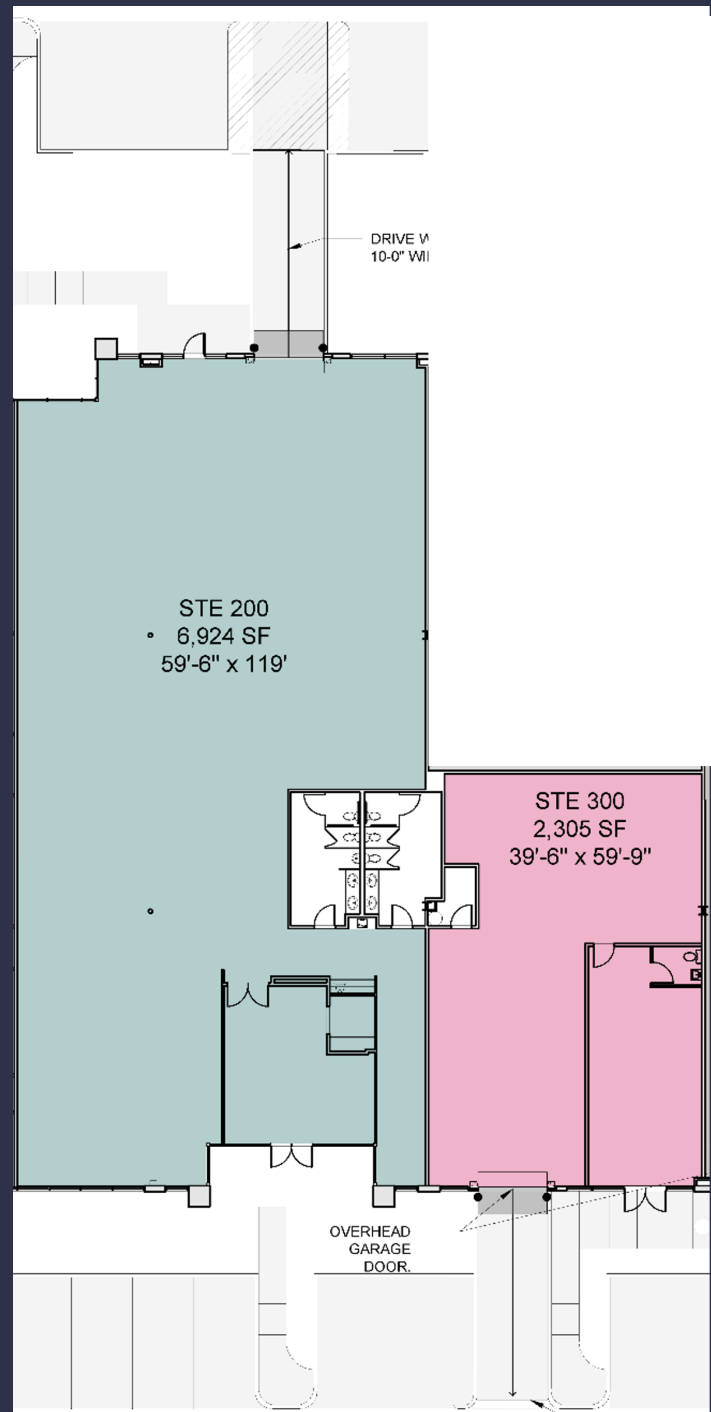
5250 TRIANGLE PKY

SUITE 200 & 300

Turn-Key Space Plan

Suite 200: 6,924 RSF

Suite 300: 2,305 RSF



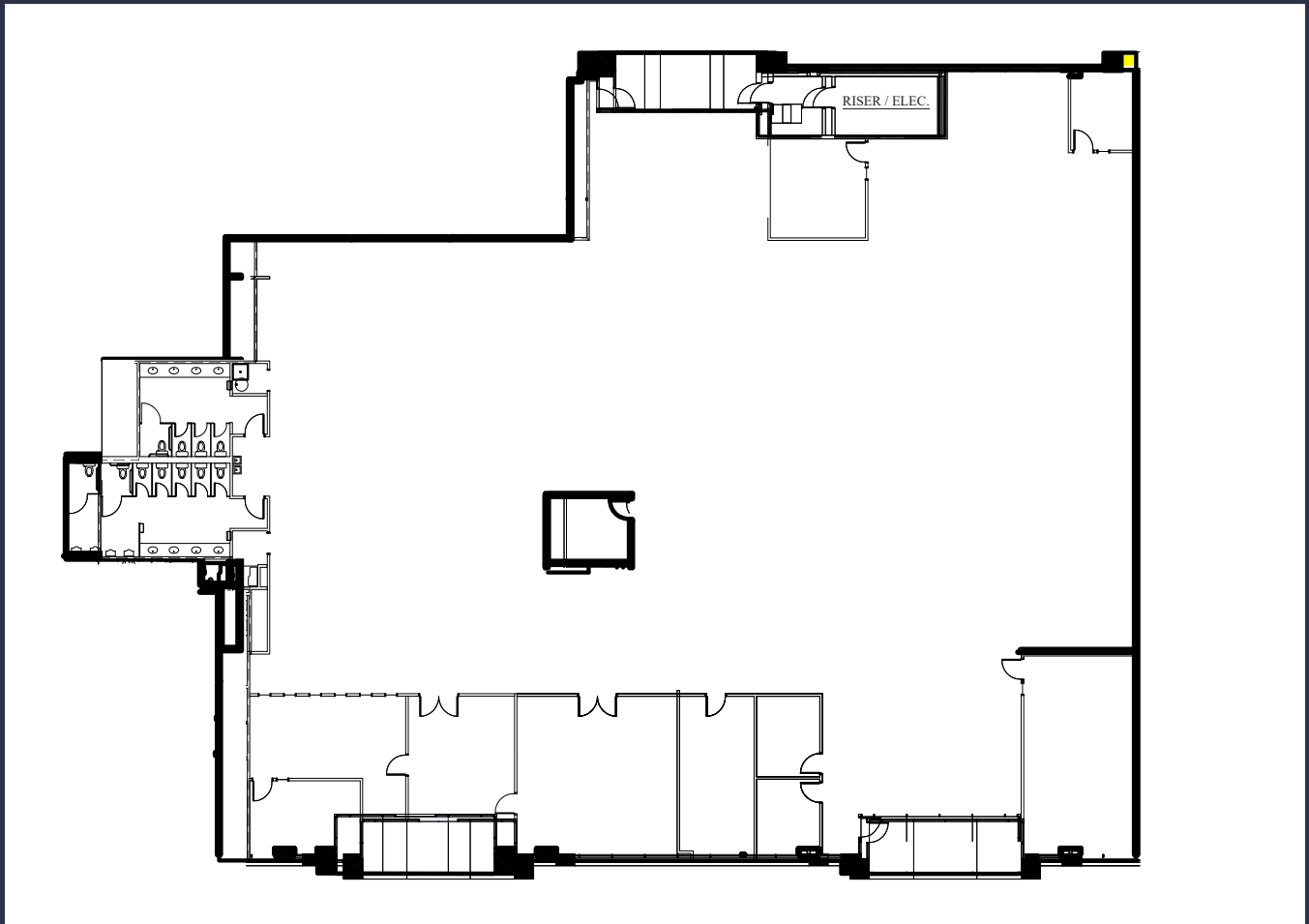
5390 TRIANGLE PKY

SUITE 200: 16,328 RSF

Turn-Key Space Plan

1 DI Door

10% Office / 90% Warehouse



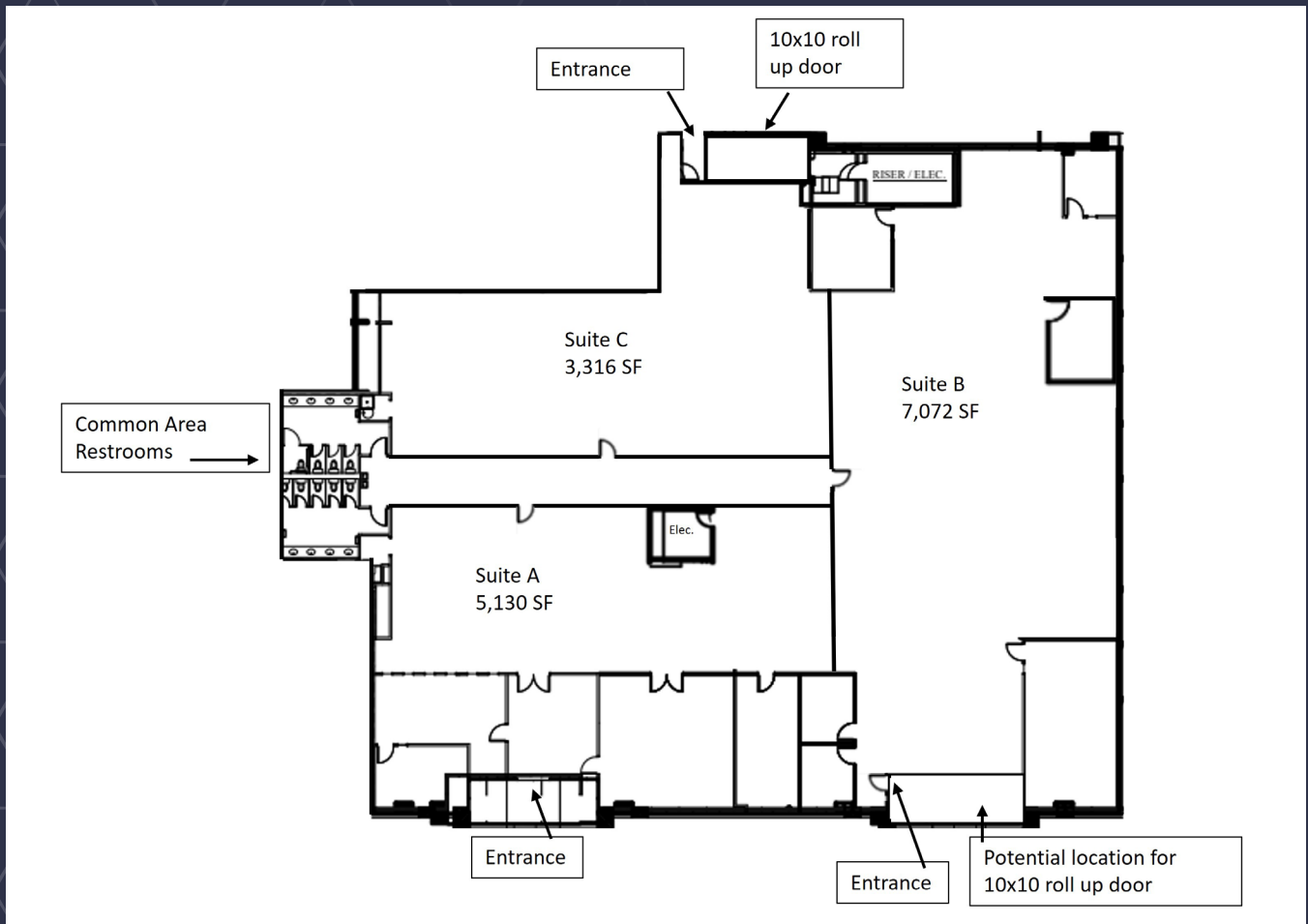
5390 TRIANGLE PKY

SUITES A, B & C

Suite A: 5,130 RSF

Suite B: 7,072 RSF

Suite C: 3,316 RSF





Lakeside by the Forum

ADVISOR CONTACTS

RJ Zurak

Senior Managing Director
770.552.2420
rj.zurak@nmrk.com

Stewart Thrash

Senior Managing Director
404.926.1074
stewart.thrash@nmrk.com

5250 & 5390 Triangle Pkwy, Peachtree Corners, GA 30092

NEWMARK



[nmrk.com](https://www.nmrk.com)