

Member of
The American
Institute
of Architects

REGISTERED ARCHITECT
DAVID GIUSIANA
STATE OF NEW YORK

David Giulsiana AIA
© 2022 David Giulsiana, AIA
These documents and their contents are the property of David Giulsiana AIA as governed by law. Any reproduction, modification or alterations to these documents without the expressed written consent of David Giulsiana AIA is prohibited by law. It is a violation of the New York State Education Law to alter this drawing.

REVISIONS:	NO.	DESCRIPTION	DATE
ISSUE DATE:	23 MAY 2022	JOB NO. DCG-2	
		PROJECTS 2022	
		PRESIDENTS PARK 2022	
		LEWISTON	
		Drawn By: DCG	
		Checked By: dcg	

WWW.GIUSIANA.COM
716-754-2522

625 Center Street
Leviston, New York, 14024
david.giulsiana@gmail.com - WWW.GIUSIANA.COM
PH. 716-754-2522

GIUSIANA
ARCHITECTS

PRESIDENTS PARK APARTMENTS
WASHINGTON DRIVE
LEWISTON NY

D:/PROJECTS 2022/PRESIDENTS PARK 2022/
PRESIDENTS PARK SITEPLAN 10 JUNE
2022.layout

SHEET NO.
A-1

1 SITE PLAN
SCALE: 1" = 50'-0"



Member of
The American
Institute
of Architects

David Giulsiana AIA
© 2022 David Giulsiana, AIA
These documents and their contents are the property of David Giulsiana AIA as governed by law. Any reproduction, modification or alterations to these documents without the expressed written consent of David Giulsiana AIA is prohibited by law. It is a violation of the New York State Education Law to alter this drawing.

DATE	REVISIONS:
	NO. DESCRIPTION

ISSUE DATE: 23 MAY 2022	JOB NO. DCG-2
	PROJECTS 2022 PRESIDENTS PARK 2022
	LEWISTON
	Drawn By: DCG Checked By: dcg

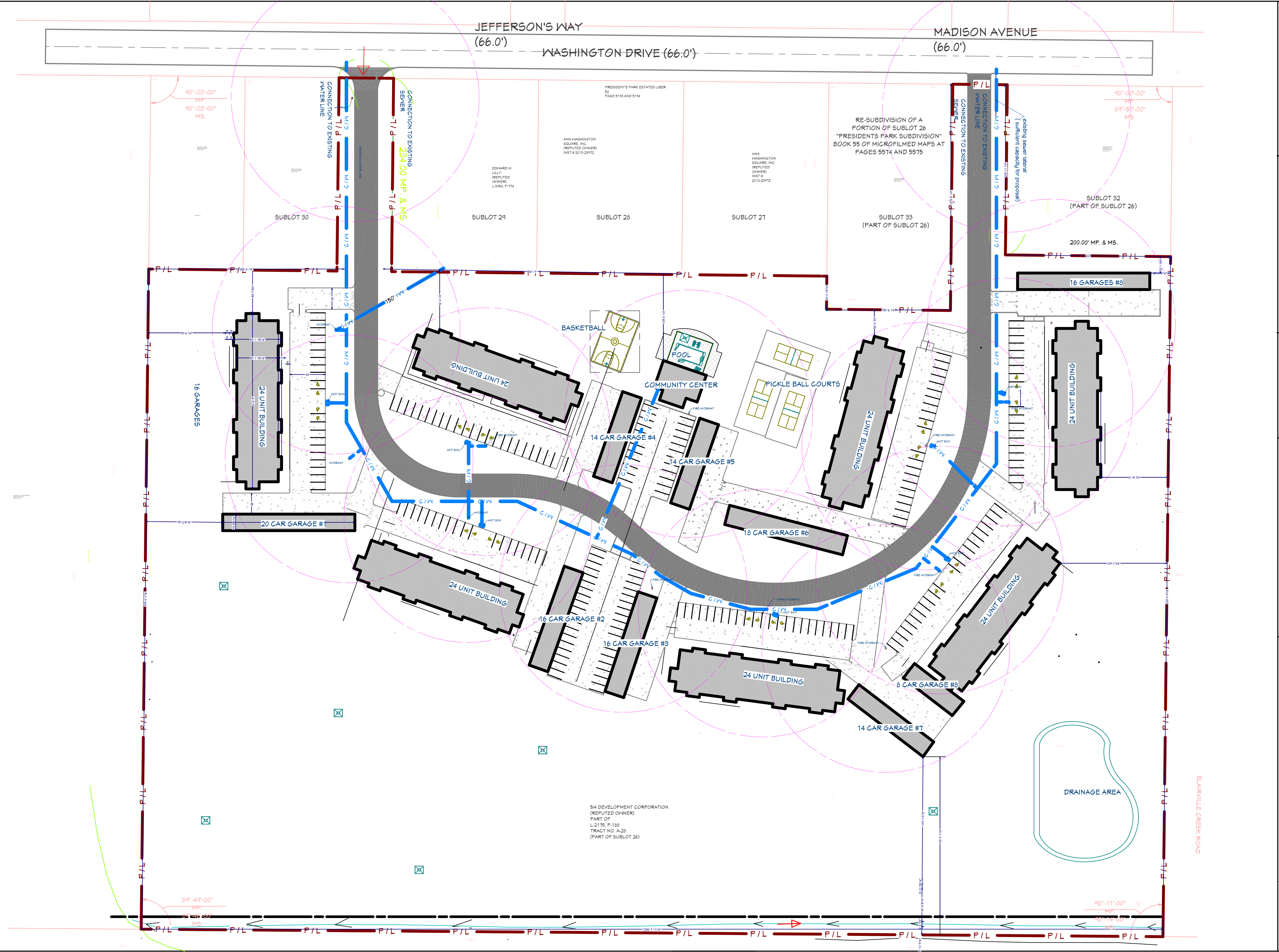
WWW.GIULSIANA.COM
716-754-2522

625 Center Street
Levittown, New York 14092
david.giulsiana@gmail.com - WWW.GIULSIANA.COM
PH: 716-754-2522

PRESIDENTS PARK APARTMENTS
WASHINGTON DRIVE
LEWISTON NY

D:/PROJECTS 2022/PRESIDENTS PARK 2022/
PRESIDENTS PARK SITEPLAN 10 JUNE
2022.layout

SHEET NO.
A-2



NOTE:
THIS MAP WAS PUT TOGETHER TO
SHOW METLAND LOCATIONS AND
BOUNDARIES.