



PRIME INDUSTRIAL DEVELOPMENT OPPORTUNITY

±2.73 ACRES

7225 NW 84th Avenue Medley, FL

Call For Pricing



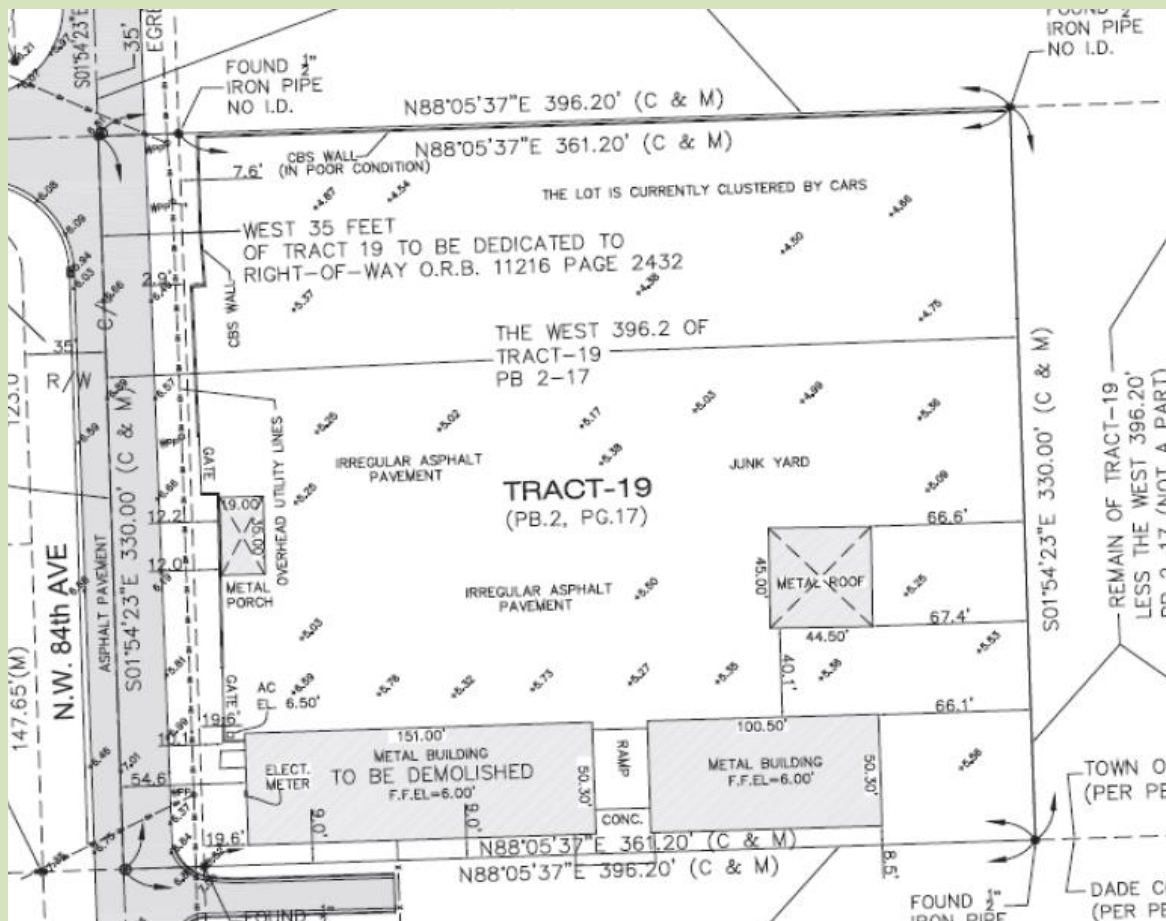
MIAMI GABLES REALTY, INC — ADRIANO A. GONZALEZ, MANAGING BROKER
10300 SUNSET DRIVE SUITE 142 MIAMI, FL 33173
(305) 992-6478 AG@MIAMIGABLES.COM





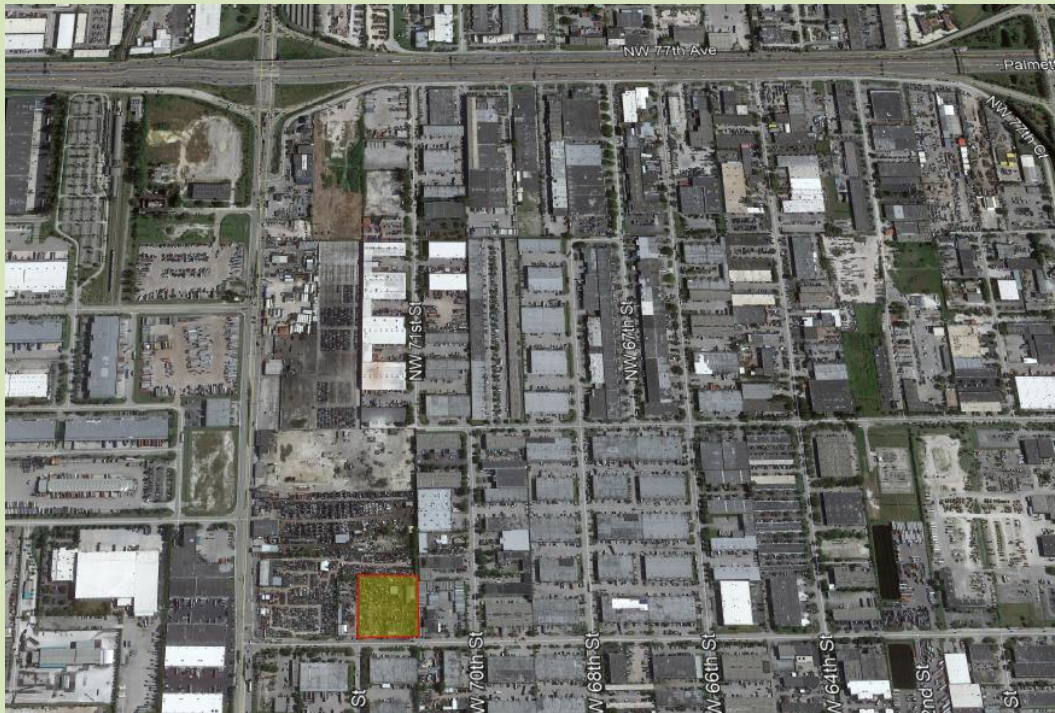
Property Summary

- Quick access to 826 (Palmetto) & Florida Turnpike via NW 74th St
- M-1 (IU-3) Zoning (Heavy Industrial / Manufacturing)
- +330' frontage (NW 84th Ave)
- Fenced property perimeter
- Close proximity to airport
- City water & sewer



MIAMI GABLES REALTY, INC — ADRIANO A. GONZALEZ, MANAGING BROKER
10300 SUNSET DRIVE SUITE 142 MIAMI, FL 33173
(305) 992-6478 AG@MIAMIGABLES.COM





MIAMI GABLES REALTY, INC — ADRIANO A. GONZALEZ, MANAGING BROKER
10300 SUNSET DRIVE SUITE 142 MIAMI, FL 33173
(305) 992-6478 AG@MIAMIGABLES.COM

