

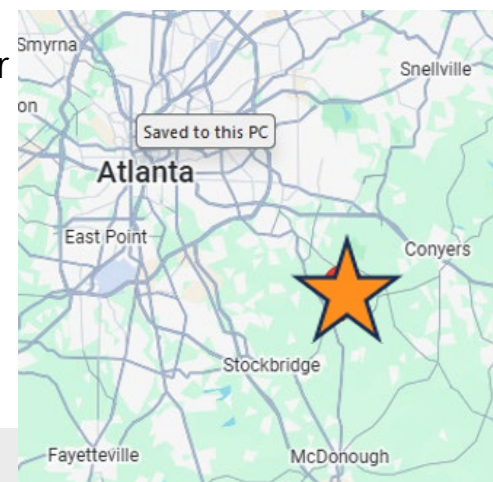
4611 HWY 138, STOCKBRIDGE, GA 30281

## FOR SALE \$1.6 Million



## PROPERTY DETAILS

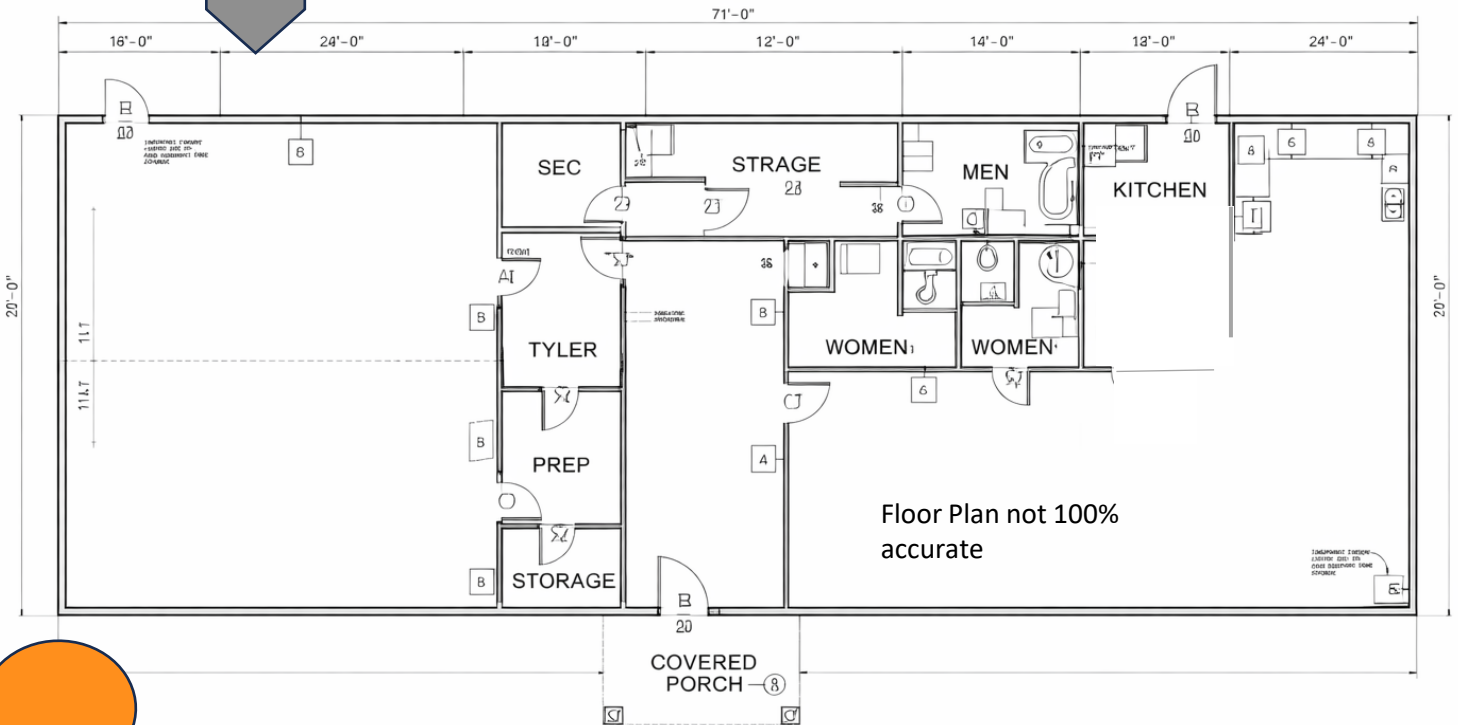
- 12 Prime Acres at Hwy 138 & Union Church Rd Roundabout
- Two Ingress/Egress Points
- 5,000 SF Office/Event Center Building/Excellent Condition
- Full Kitchen
- Two Restrooms
- Two Large Open Rooms
- Building B: 1 drive-in door/power & access to water  
Side panels open to outside
- Building C: office/storage building with power
- All Utilities Available/Septic – no sewer
- Mixed Zoning: Commercial/O&I/AR
- Potential Development Opportunity



## CONTACT

**CATHY SHEEHAN**  
404.578.2897  
cathy.sheehan@pacelync.com

4611 HWY 138, STOCKBRIDGE, GA 30281



Great church site or future development site

PANTHERSVILLE MASONIC LODGE  
FLOOR PLAN



**CONTACT**

**CATHY SHEEHAN**  
404.578.2897  
cathy.sheehan@pacelync.com