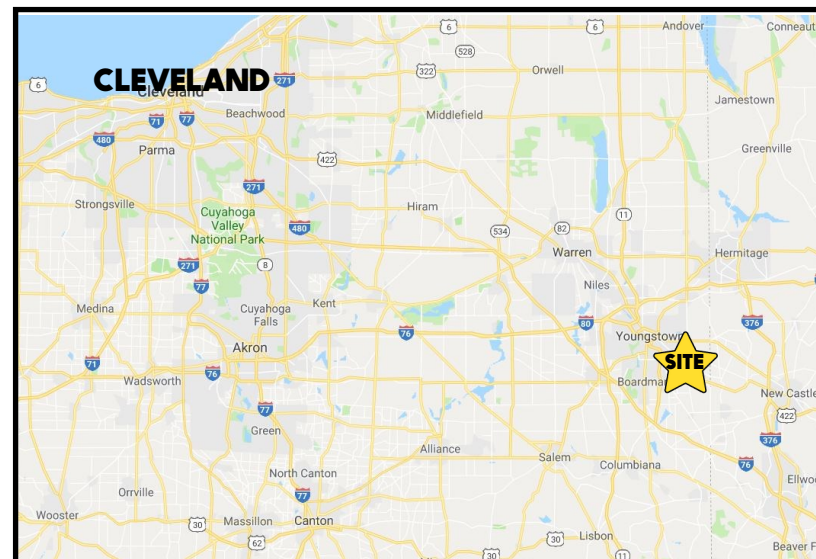


## LOCATION

151 Second St, Lowellville, OH 44436



**3D TOUR** [Tour](#)

## HIGHLIGHTS

- Professional office with on-site parking
- Adjacent Warehouse / garage also available
- Recently updated and well maintained
- Move-in ready
- Close to PA, convenient for tri-county location

## CONTACT

**DON THOMAS**

501.269.3827

[dthomas@platzrealtygroup.com](mailto:dthomas@platzrealtygroup.com)

Office: 330.757.4889 | Fax: 330.294.5622 | 3830 Starr Centre Dr, Suite 2, Canfield, OH 44406

**[www.PLATZREALTYGROUP.com](http://www.PLATZREALTYGROUP.com)**





Office: 330.757.4889 | Fax: 330.294.5622 | 3830 Starr Centre Dr, Suite 2, Canfield, OH 44406

**[www.PLATZREALTYGROUP.com](http://www.PLATZREALTYGROUP.com)**

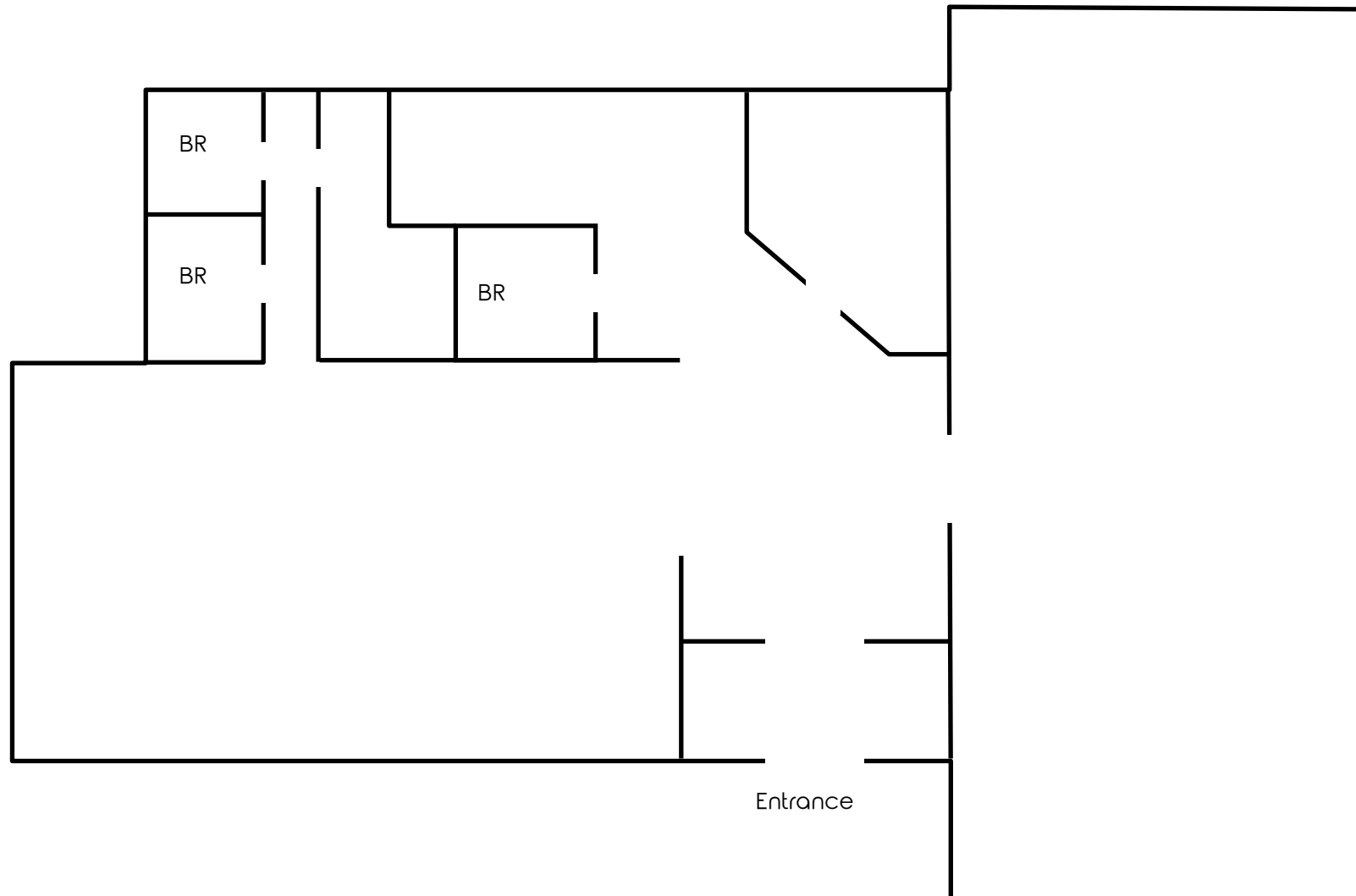




Office: 330.757.4889 | Fax: 330.294.5622 | 3830 Starr Centre Dr, Suite 2, Canfield, OH 44406

**[www.PLATZREALTYGROUP.com](http://www.PLATZREALTYGROUP.com)**

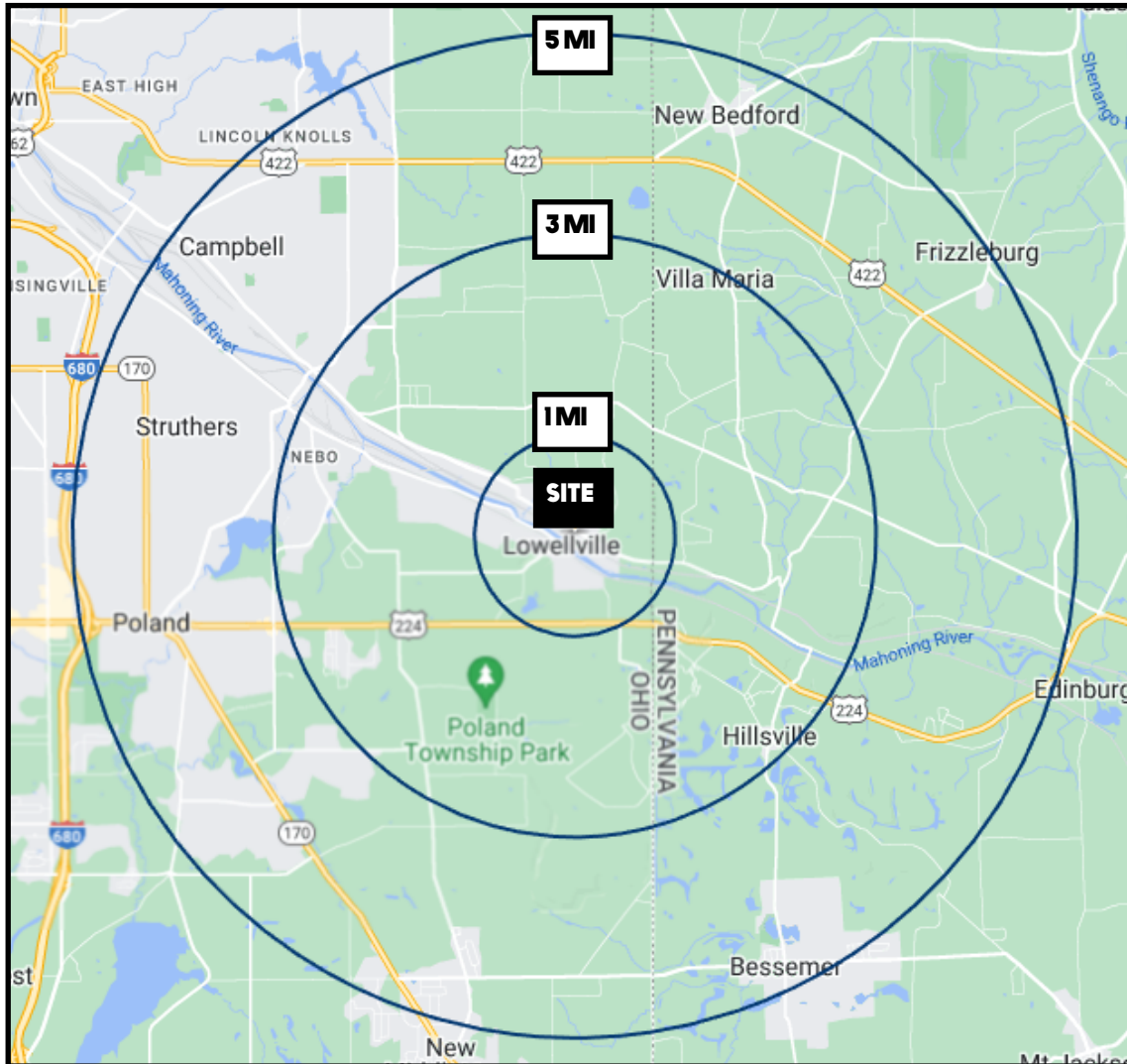
The information presented was obtained from sources believed to be true and reliable. The Platz Realty Group makes no warranties or guarantees to the accuracy of the information.



Office: 330.757.4889 | Fax: 330.294.5622 | 3830 Starr Centre Dr, Suite 2, Canfield, OH 44406

**[www.PLATZREALTYGROUP.com](http://www.PLATZREALTYGROUP.com)**





DEMOGRAPHICS	1 MI	3 MI	5 MI
<b>POPULATION</b>	1,281	6,545	45,157
<b>HOUSEHOLDS</b>	591	2,840	19,212
<b>MEDIAN AGE</b>	47	48.1	45
<b>AVERAGE HH INCOME</b>	\$67,092	\$79,620	\$73,125

SITE INFORMATION	
<b>LOCATION</b>	Lowellville Village Mahoning County
<b>PARCELS</b>	40-009-0-132, 133, 134, 173
<b>PROPERTY TYPE</b>	Office
<b>ACREAGE</b>	.59 acres +/-
<b>REAL ESTATE TAXES</b>	\$3,719/year
<b>SIZE</b>	3,014 SF
<b>PRICE</b>	<del>\$475,000</del> <b>REDUCED!</b> \$395,000

Office: 330.757.4889 | Fax: 330.294.5622 | 3830 Starr Centre Dr, Suite 2, Canfield, OH 44406

**www.PLATZREALTYGROUP.com**