

# RETAIL/OFFICE SPACE FOR LEASE



## 357 3<sup>rd</sup> Street, Jersey City, NJ



**Size:** 1,050 SF

**Asking Rent:** Upon Request

**Lease Type:** NNN

**Frontage:** 49 FT

**Possession:** Immediate

**Location Map:** [Click here](#)

### Highlights:

- ✓ Prime **corner** location in the **downtown** area of Jersey City
- ✓ A short walk to **Grove Street PATH** and **Restaurant Row** on Newark Ave.
- ✓ Excellent visibility with **49 feet** of frontage
- ✓ Great demographics with **100k** residents and **\$140k** median income w/ 1-mile

### CONTACT EXCLUSIVE BROKER:

**Michael Plesnitzer**

mplesnitzer@excedore.com

516.242.4749

**Konrad Konik**

kkonik@excedore.com

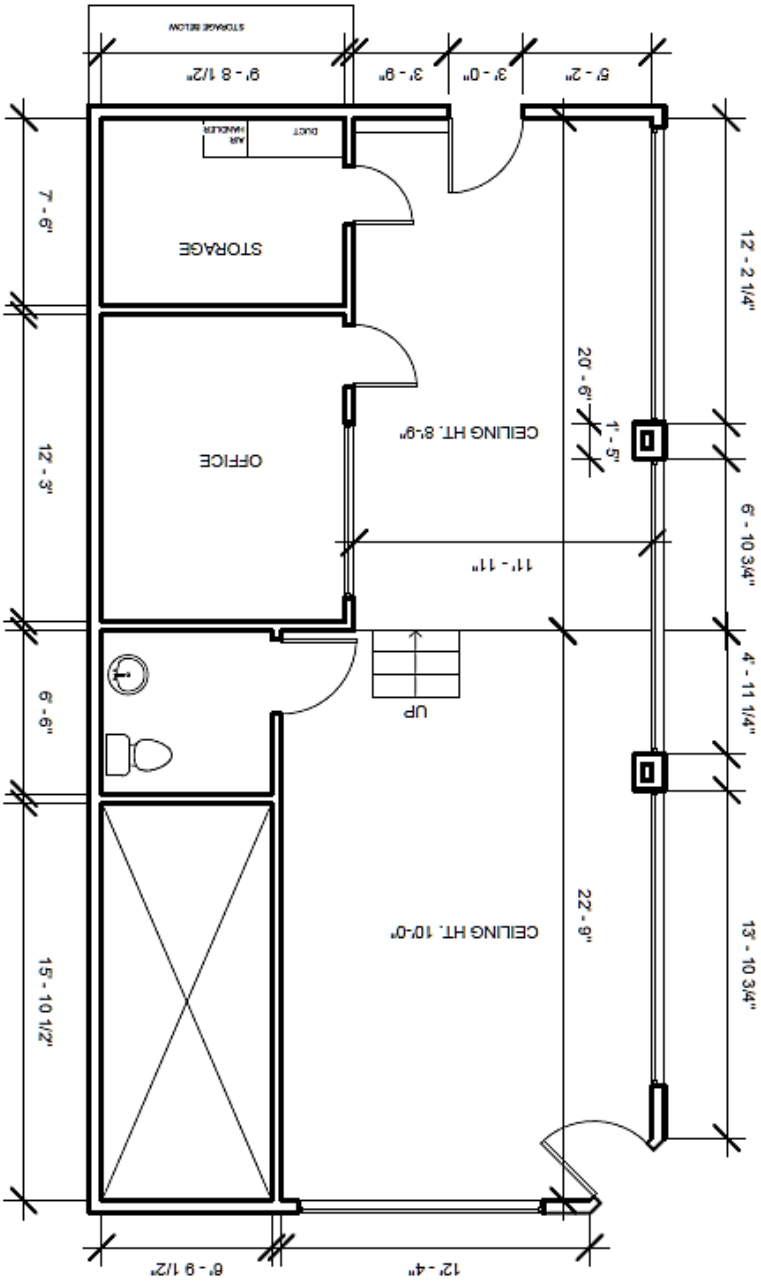
347.735.9779

KW NJ Metro Group | 237 Lorraine Ave., Upper Montclair, NJ 07043 | 973.783.7400 | Licensed Real Estate Broker

This information has been secured from sources we believe to be reliable, but we make no representations as to the accuracy of the information.

References to square footage are approximate. Tenant must verify the information and bears all risk for any inaccuracies.

# FLOOR PLAN



Brunswick Street

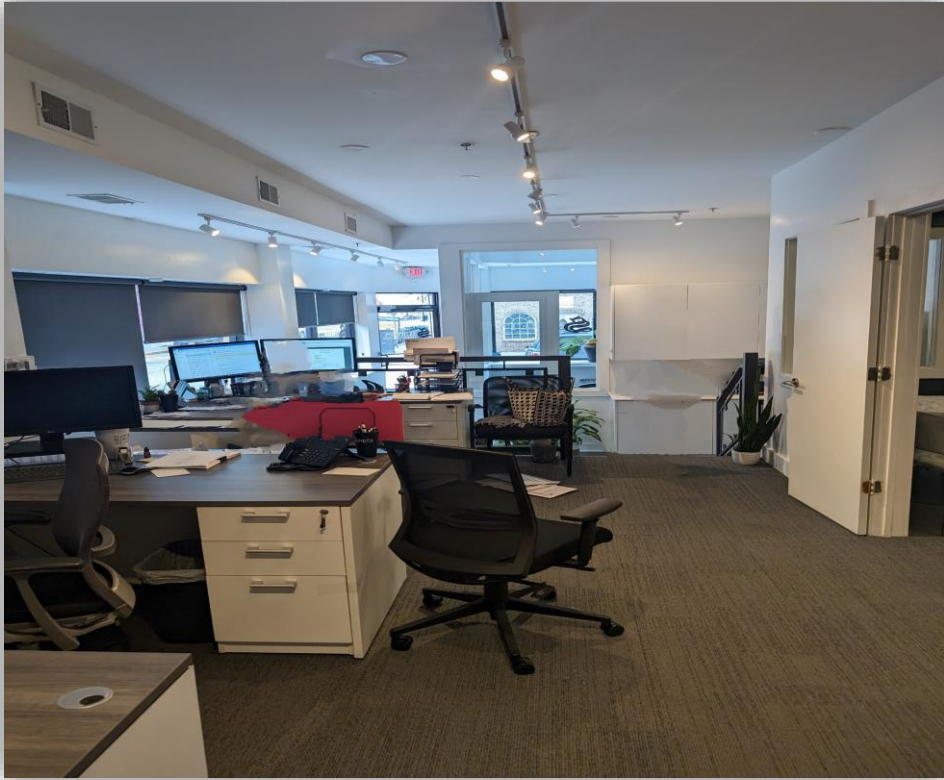
3<sup>rd</sup> Street



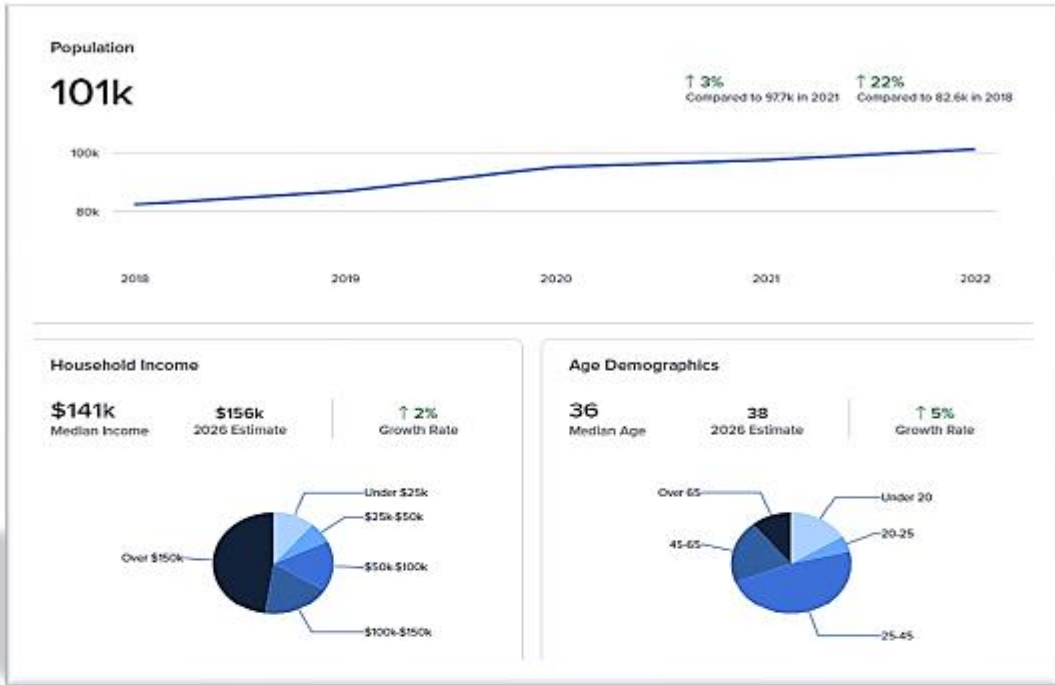
# EXTERIOR PHOTOS



# INTERIOR PHOTOS



## 1-mile Radius



## 3-mile Radius

