

12001 TECH CENTER DRIVE

LIVONIA, MICHIGAN

88,066 SF TURN-KEY CORPORATE HEADQUARTERS AVAILABLE FOR SALE

PROPERTY FEATURES

- 88,066 SF Ideal Corporate Headquarters
- Three Floors of Approx. 29,000 SF Each
- 303 Parking Spaces (3.5/1,000)
- Three Grade-Level Doors
- Lab/Garage Areas
- Built in 2005
- Delivered Fully Furnished
- Zoned M-1 (Light Manufacturing)
- Near Retail and Restaurants
- Close Proximity to I-96 (Middlebelt Road)
- 11 Miles to Detroit Metropolitan Airport (DTW)
- Building Amenities Include Cafe and Employee Lounge

Asking Sale Price:
Contact Broker



FIRST FLOOR

88,066 SF Building Total | First Floor +/-29,000 SF



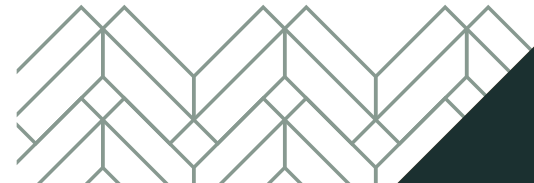
SECOND FLOOR

88,066 SF Building Total | Second Floor +/-



THIRD FLOOR

88,066 SF Building Total | Third Floor +/-



SITE PLAN



AERIAL



WATSON'S

ars St

Plymouth Rd

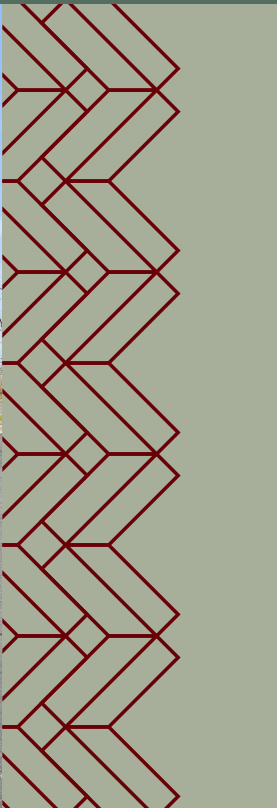
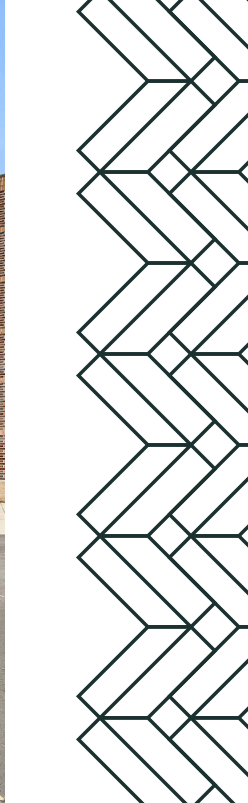
Plymouth Rd

Middlebelt Rd

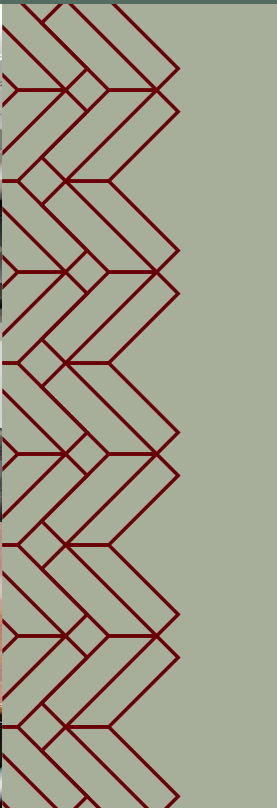
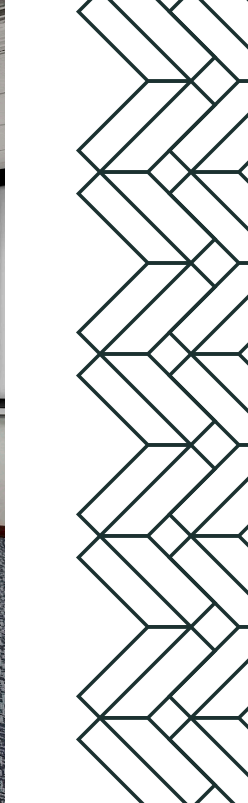


AMENITIES











CONTACT US

EDWARD WUJEK
Executive Vice President
+1 248 351 2058
edward.wujek@cbre.com

KELLY CUBBIN
Vice President
+1 248 936 6852
kelly.cubbin@cbre.com

