

# MEDICAL OFFICE FOR SUBLEASE

PRICE  
SIZE  
TERM  
POSSESSION

INQUIRE  
2,894+/- RSF  
7 YEARS  
IMMEDIATE



**317 EAST 34TH STREET, SUITE 901**  
BETWEEN 1ST AND 2ND AVENUE

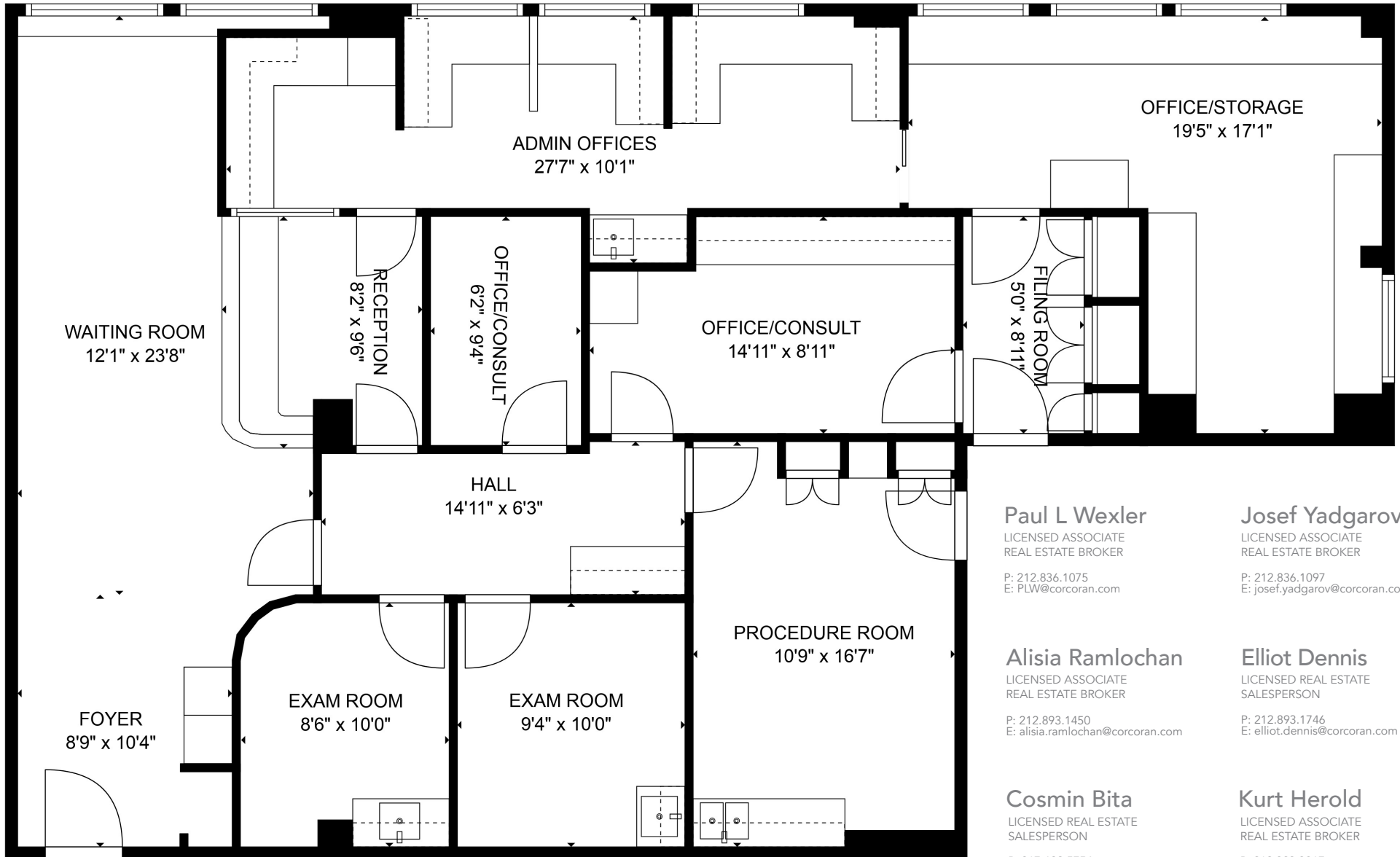
## LAYOUT

- WAITING ROOM
- RECEPTION
- 2 EXAM ROOMS
- 1 PROCEDURE ROOM
- 2 CONSULTS/OFFICES
- OPEN ADMINISTRATIVE AREAS
- FILING ROOM
- LARGE STORAGE/OFFICE

## ADDITIONAL FEATURES

- SECONDARY STAFF ENTRANCE
- ADDITIONAL EGRESS
- 9 WINDOWS
- MULTI-ZONE CENTRAL AIR CONDITIONING
- ADAPTABLE TO ANY MEDICAL SPECIALTY





**Paul L Wexler**

LICENSED ASSOCIATE  
 REAL ESTATE BROKER

P: 212.836.1075  
 E: PLW@corcoran.com

**Josef Yadgarov**

LICENSED ASSOCIATE  
 REAL ESTATE BROKER

P: 212.836.1097  
 E: josef.yadgarov@corcoran.com

**Alisia Ramlochan**

LICENSED ASSOCIATE  
 REAL ESTATE BROKER

P: 212.893.1450  
 E: alisia.ramlochan@corcoran.com

**Elliot Dennis**

LICENSED REAL ESTATE  
 SALESPERSON

P: 212.893.1746  
 E: elliot.dennis@corcoran.com

**Cosmin Bitu**

LICENSED REAL ESTATE  
 SALESPERSON

P: 917.602.5754  
 E: cosmin.bitu@corcoran.com

**Kurt Herold**

LICENSED ASSOCIATE  
 REAL ESTATE BROKER

P: 212.323.3817  
 E: kherold@corcoran.com

FLOOR PLAN FOR ILLUSTRATIVE PURPOSES ONLY