

10060 Old Cimarron Trail

Universal City, TX 78148

www.cbre.com

900 SF AVAILABLE IN NORTHEAST SAN ANTONIO



10060 Old Cimarron Trail
Universal City, TX 78148

For Lease

Property Details

+ **900 SF AVAILABLE**

+ **Rate:** Contact Broker

+ Ample parking

+ High traffic counts nearby

+ Easily accessible Loop 1604 & FM 78

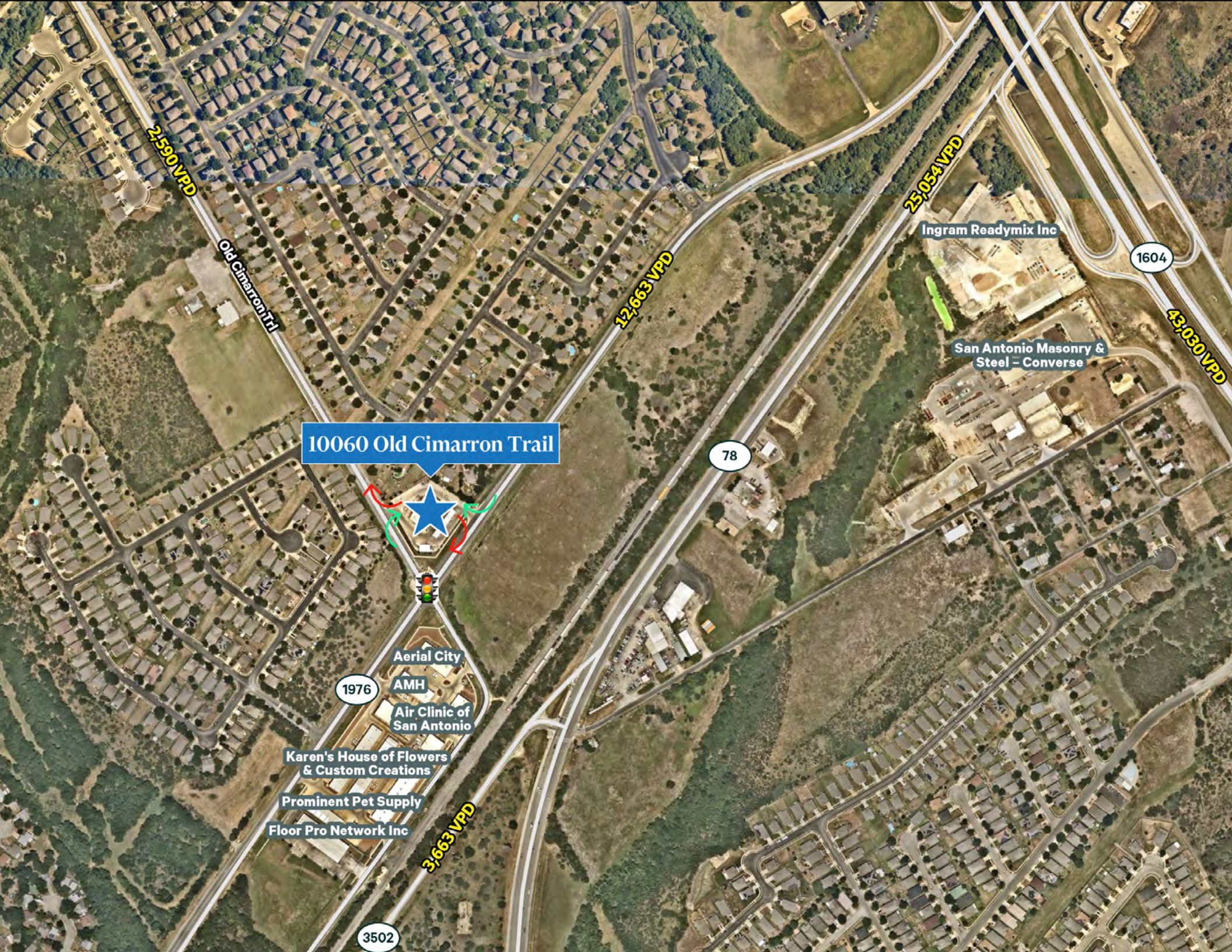
+ Near the Randolph Air Force Base

+ Daytime population of 79,708 within 3-mile radius





**900 SF
AVAILABLE**



2,590 VPD

Old Cimarron Trail

10060 Old Cimarron Trail

12,663 VPD

78

25,054 VPD

Ingram Readymix Inc

1604

San Antonio Masonry & Steel - Converse

43,030 VPD

1976

Aerial City

AMH

Air Clinic of San Antonio

Karen's House of Flowers & Custom Creations

Prominent Pet Supply

Floor Pro Network Inc

3,663 VPD

3502



Costco
WHOLESALE
Academy

Walmart

3 Miles

THE FORUM AT OLYMPIA
PARKWAY- SELMA, TEXAS
KOHL'S **five BELOW**
BEST BUY **ROSS** **TJ-MAXX**
DRESS FOR LESS
Target **HOME DEPOT** **HOBBY LOBBY**
BARNES & NOBLE

Arlan's
MARKET
DOLLAR GENERAL
ExonMobil

DOLLAR TREE
TEXACO

DOLLAR TREE

DOLLAR GENERAL

sam's club
ExonMobil

DOLLAR TREE

CARMAX

Chevron **QT**

Walmart

FAMILY DOLLAR

LOWE'S

DOLLAR GENERAL

H-E-B
ExonMobil

EXCHANGE

Walmart

DOLLAR TREE **SUNOCO**

10060 Old Cimarron Trail



DOLLAR TREE

ExonMobil **Shell**

DOLLAR GENERAL

DOLLAR TREE

DOLLAR GENERAL

DOLLAR GENERAL

H-E-B

Shell

QT

ExonMobil
TEXACO

Walmart

Walmart **MURPHY USA**

FAMILY DOLLAR

DOLLAR GENERAL

BIG LOTS!

OLLIE'S **ROSS**
GOOD STUFF CHEAP DRESS FOR LESS
five BELOW **popshelf**

DOLLAR TREE

Shell

DOLLAR GENERAL

Graytown Rd

10

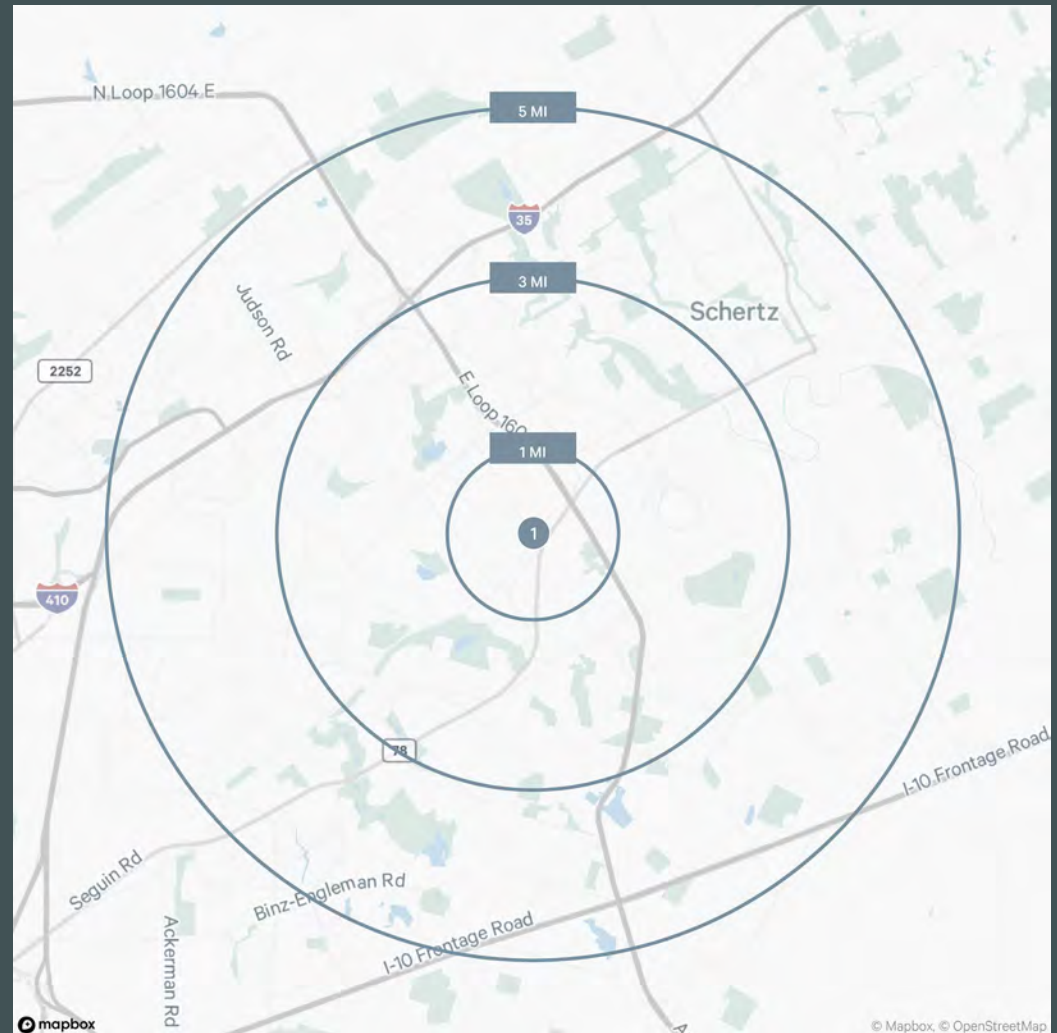
2024 Demographics

Miles	1	3	5
Population	12,126	93,382	233,007
Daytime Population	7,901	79,708	195,935
Median Age	35	36.3	36.2
Average Household Income	\$98,160	\$93,385	\$96,765
Average Household Size	2.86	2.75	2.76
2023 Employees	1,848	22,285	60,014
2023 Businesses	178	1,936	60,014

Traffic Counts

FM 78	25,054 VPD
FM 1976	12,663 VPD
Anderson Loop	61,606 VPD

Source: Dimension



Contact Us

Davis Franklin

Associate
 +1 512 418 3239
 davis.franklin@cbre.com

© 2024 CBRE, Inc. All rights reserved. This information has been obtained from sources believed reliable, but has not been verified for accuracy or completeness. You should conduct a careful, independent investigation of the property and verify all information. Any reliance on this information is solely at your own risk. CBRE and the CBRE logo are service marks of CBRE, Inc. All other marks displayed on this document are the property of their respective owners, and the use of such logos does not imply any affiliation with or endorsement of CBRE. Photos herein are the property of their respective owners. Use of these images without the express written consent of the owner is prohibited.