

FOR LEASE Building in Goose Hollow Neighborhood 1215 SW 18TH AVENUE • PORTLAND, OREGON 97205



PROPERTY HIGHLIGHTS

- Free-Standing Building with off-street parking
- +/- 1,700 square foot building
- Near MAC Club, Lincoln High School, Providence Park and Max Line
- Two off-street parking spaces – includes parking for Timbers and Thorns games

FOR INFORMATION AND RATES PLEASE CALL:

Molly Mink Liston
molly@gilbertbrocommercial.com

503.221.9424

Gilbert Bros.
COMMERCIAL BROKERAGE COMPANY • REALTORS

Property owned by real estate brokers licensed in the states of Oregon and Washington



Entrance from parking lot

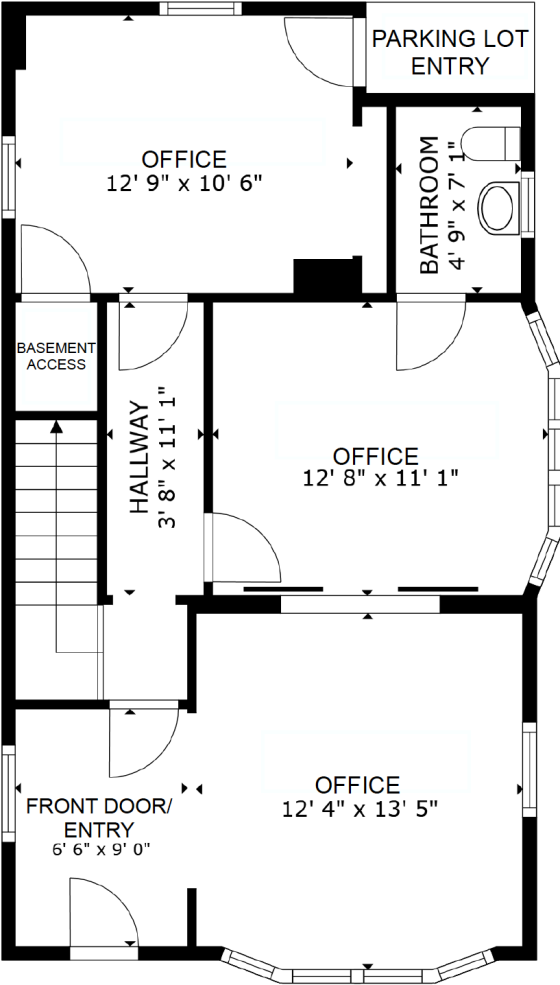


18th Avenue entrance

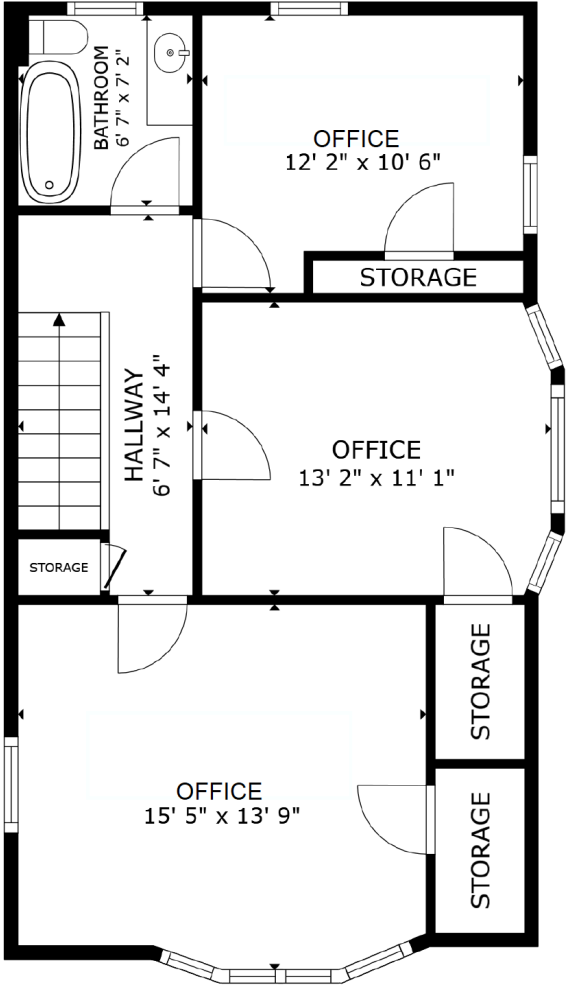
- Customize and make it your own
- 6 office / multi-purpose rooms
- Basement for storage
- Great for counseling, therapist, legal, accounting, massage / acupuncture
- Amenities nearby including Goose Hollow Inn, Fehrenbacher Hof Coffee Shop, Bold Coffee & Books



FLOOR PLANS



FLOOR 1

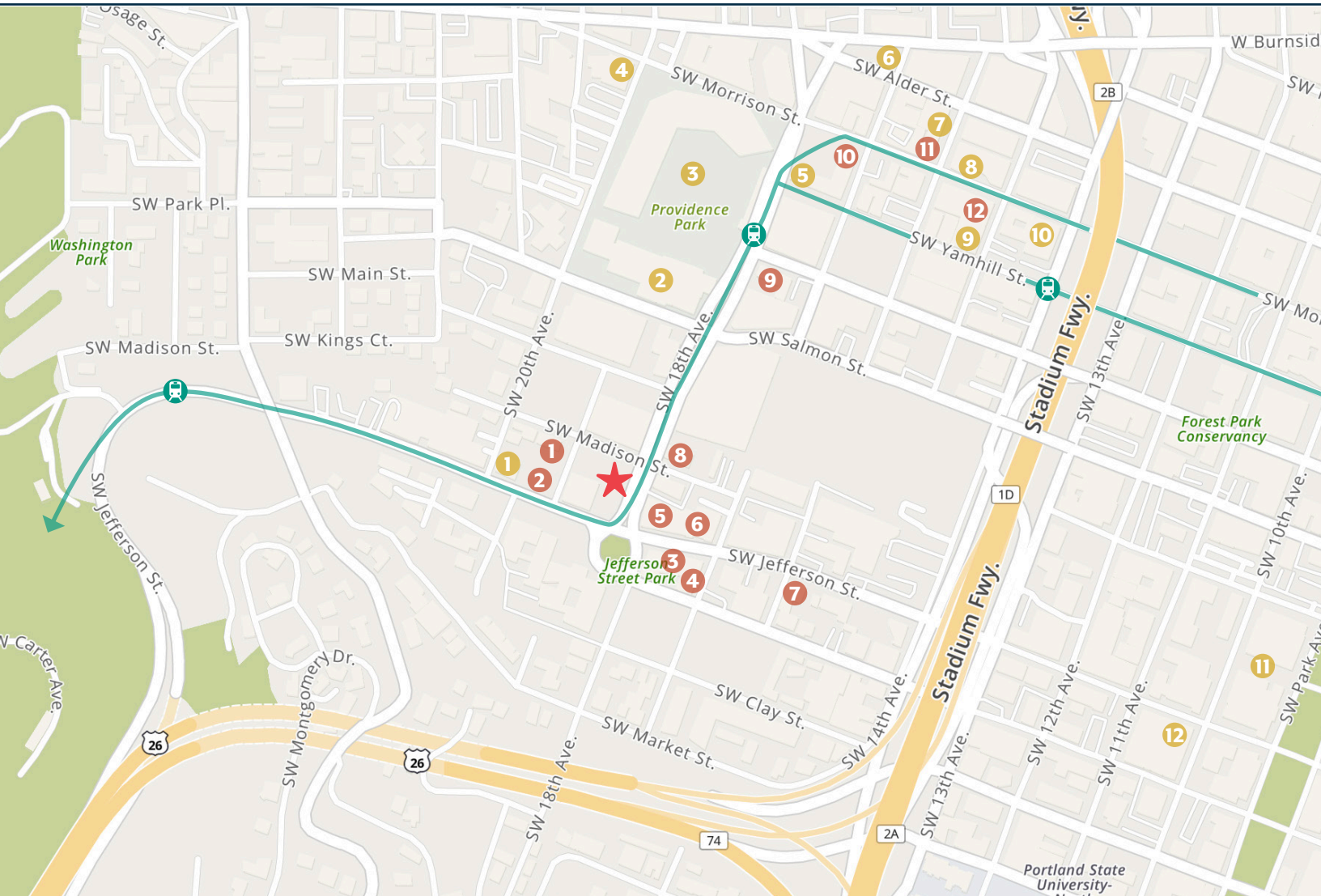


FLOOR 2

EXPLORE THE PROPERTY IN 3D

Sizes and dimensions are approximate; actual may vary.

HIGHLIGHTS ★ 1215 SW 18th Avenue, Portland, Oregon 97205



FOOD AND DRINK

1. FEHRENBACHER HOF
2. GOOSE HOLLOW INN
3. BELLAGIOS PIZZA
4. RUSH BOWLS
5. BOLD COFFEE & BOOKS
6. BLUE STAR DONUTS
7. LEAKY ROOF GASTRO PUB
8. KINARA THAI
9. THE CHEERFUL BULLPEN
10. COCO DONUTS
11. GILDA'S
12. GRACIE'S

SERVICES / ENTERTAINMENT

1. WILLAMETTE DENTAL GROUP
2. MULTNOMAH ATHLETIC CLUB
3. PROVIDENCE PARK
4. U.S. BANK
5. EXPRESS MARKET
6. SAMMY'S FLOWERS
7. COMMODORE GROCERY
8. ARTISTS REPERTORY THEATRE
9. HOTEL DELUXE
10. TIFFANY CENTER
11. PORTLAND ART MUSEUM
12. SAFEWAY

ACCESSIBILITY



WALK SCORE **88**



TRANSIT SCORE **86**



BIKE SCORE **92**