

24 WEBSTER AVE

1ST FLOOR

UNIT 3: 237 sq.ft.

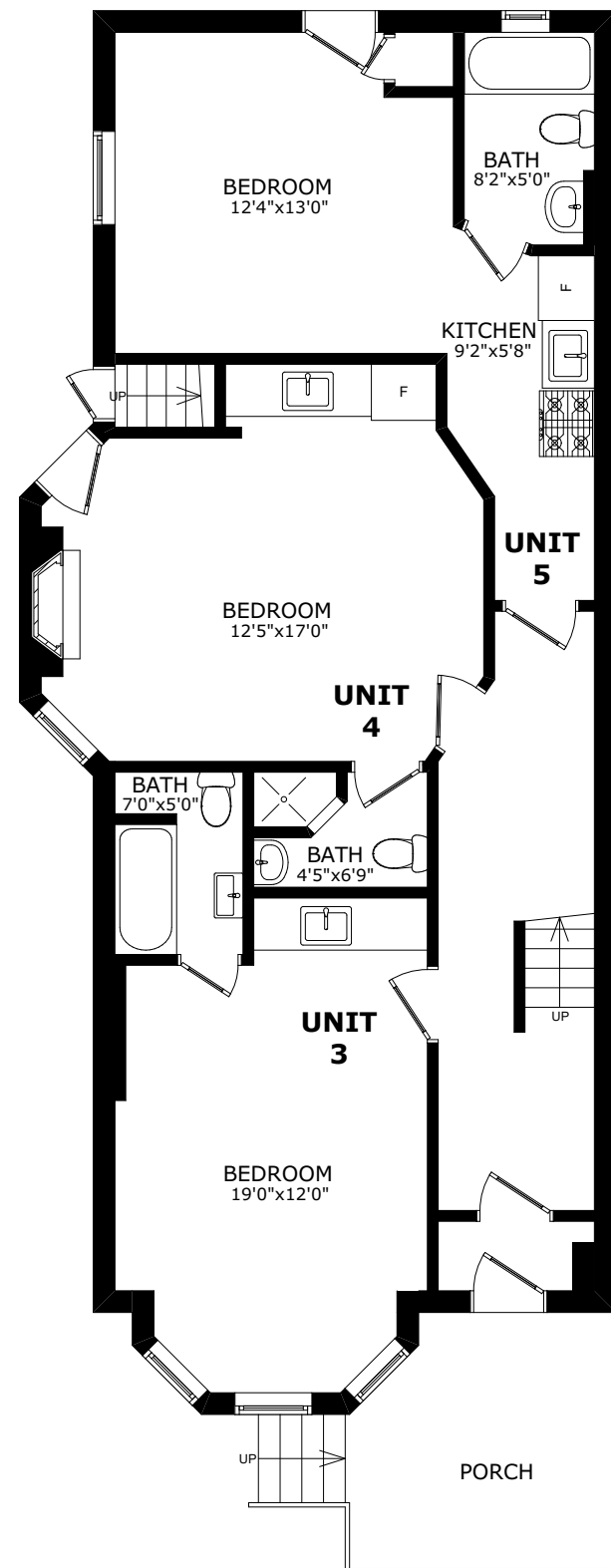
UNIT 4: 254 sq.ft.

UNIT 5: 271 sq.ft.

TOTAL AREA: 1,070 sq.ft.

CEILING HEIGHT: 10'8"

SIZE AND LAYOUT ARE APPROXIMATE,
BUYER TO VERIFY SIZES.

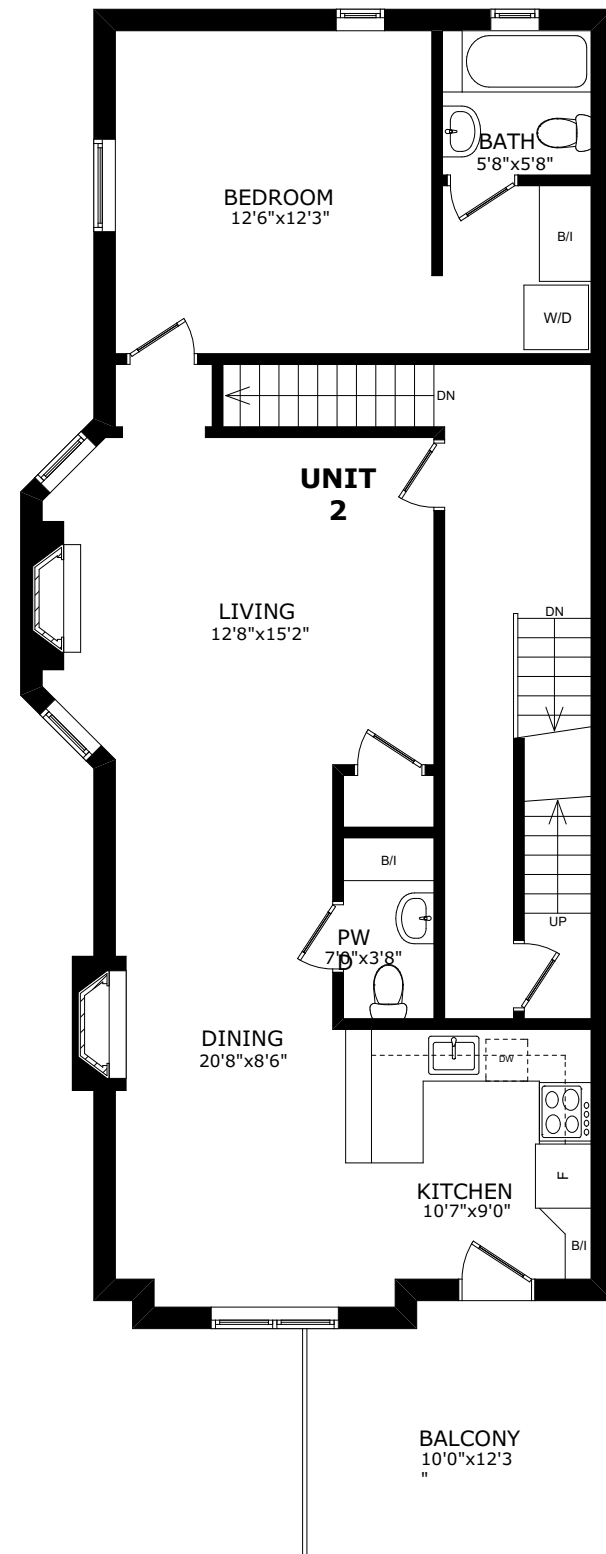


24 WEBSTER AVE

2ND FLOOR

UNIT 2: 764 sq.ft.
TOTAL AREA: 1,046 sq.ft.
CEILING HEIGHT: 9'4"

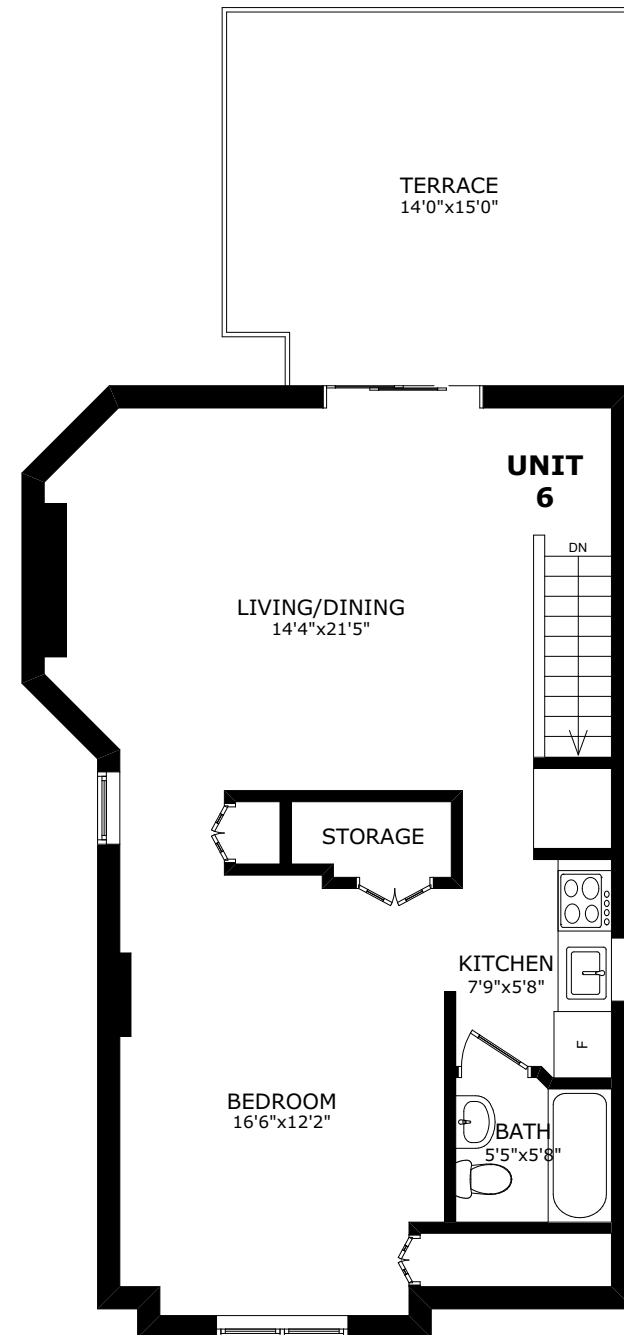
SIZE AND LAYOUT ARE APPROXIMATE,
BUYER TO VERIFY SIZES.



24 WEBSTER AVE

3RD FLOOR

UNIT 6: 645 sq.ft.
TOTAL AREA: 736 sq.ft.
CEILING HEIGHT: 8'4"



SIZE AND LAYOUT ARE APPROXIMATE,
BUYER TO VERIFY SIZES.

24 WEBSTER AVE

BASEMENT

TOTAL AREA: 1,070 sq.ft.
CEILING HEIGHT: 7'2"

SIZE AND LAYOUT ARE APPROXIMATE,
BUYER TO VERIFY SIZES.

