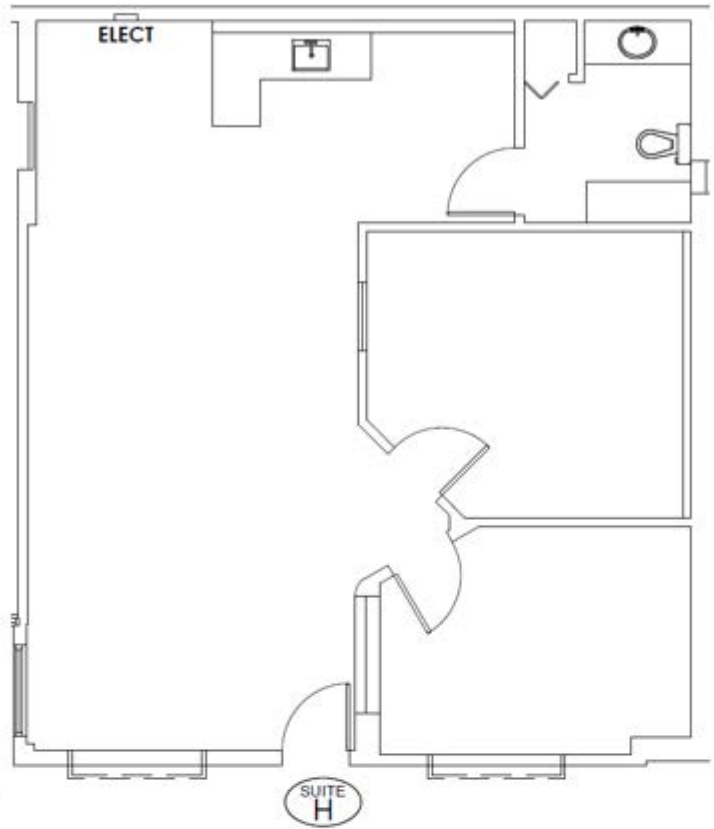


228 N PARK AVE | SUITE H | WINTER PARK, FL 32789

FOR LEASE

2ND FLOOR
OFFICE SPACE



Premium workspace in the heart of the Park Avenue District, featuring a common area with a vibrant atrium and a serene koi pond, just steps from an array of boutique shops and dining

1,048 sq. ft. 3-year minimum term,
private restroom, additional parking available,
available August 1st, 2026,
\$4,192/mo

**EUCALYPTUS
PROPERTIES**
— & —
Management

JOHN BOLEN
Managing Director
(407) 645-4700