

FOR LEASE



5 PARK PLACE UNIT 524, ANNAPOLIS, MD 21401

479 JUMPERS HOLE ROAD

479 Jumpers Hole Road
Severna Park, MD 21146



Presented By:

Scott Douglas

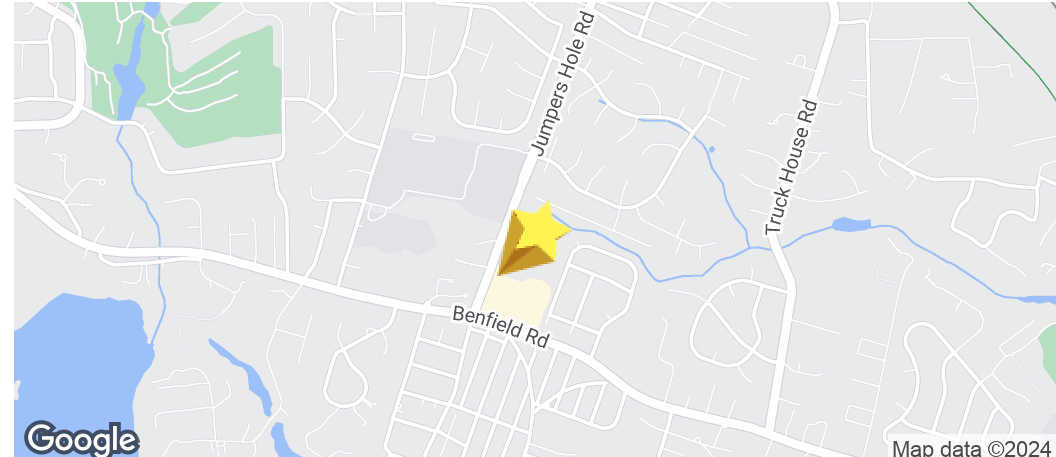
301.655.8253

sdouglas@douglascommercial.com

FOR LEASE OFFICE SPACE

479 JUMPERS HOLE ROAD

479 Jumpers Hole Road
Severna Park, MD 21146



OFFERING SUMMARY

Available SF:	1,200 - 1,645(+/-) SF
Lease Rate:	\$23.00 SF/yr (Full Service)
Lot Size:	1.66(+/-) Acres
Year Built:	1985
Building Size:	39,750(+/-)
Zoning:	C2
Market:	Baltimore
Submarket:	Rte 2 Corridor South

Presented By:

Scott Douglas

301.655.8253

sdouglas@douglascommercial.com

PROPERTY OVERVIEW

Welcome to 479 Jumpers Hole Road, a beautiful multi-story professional office building that currently has 2 suites available for lease. Suite 201 is a 1200(+/-) square foot office space that features 3 offices, a reception area, and a storage/IT closet. Suite 306 is a 1645(+/-) square foot office space that features offices, a waiting room, receptionist area and conference room. This suite will be available 9/1/24. These spaces are perfect for a business professional looking for a comfortable and functional workspace.

PROPERTY HIGHLIGHTS

- Prime location with ample amenities within walking distance
- Located in an attractive multi-story office building
- 3 Offices, Reception Area, Storage/IT Closet (Suite 201)
- Offices, A Waiting Room, Receptionist Area and Conference Room (Suite 306)
- On-site property management

DOUGLAS
COMMERCIAL

5 PARK PLACE UNIT 524, ANNAPOLIS, MD 21401

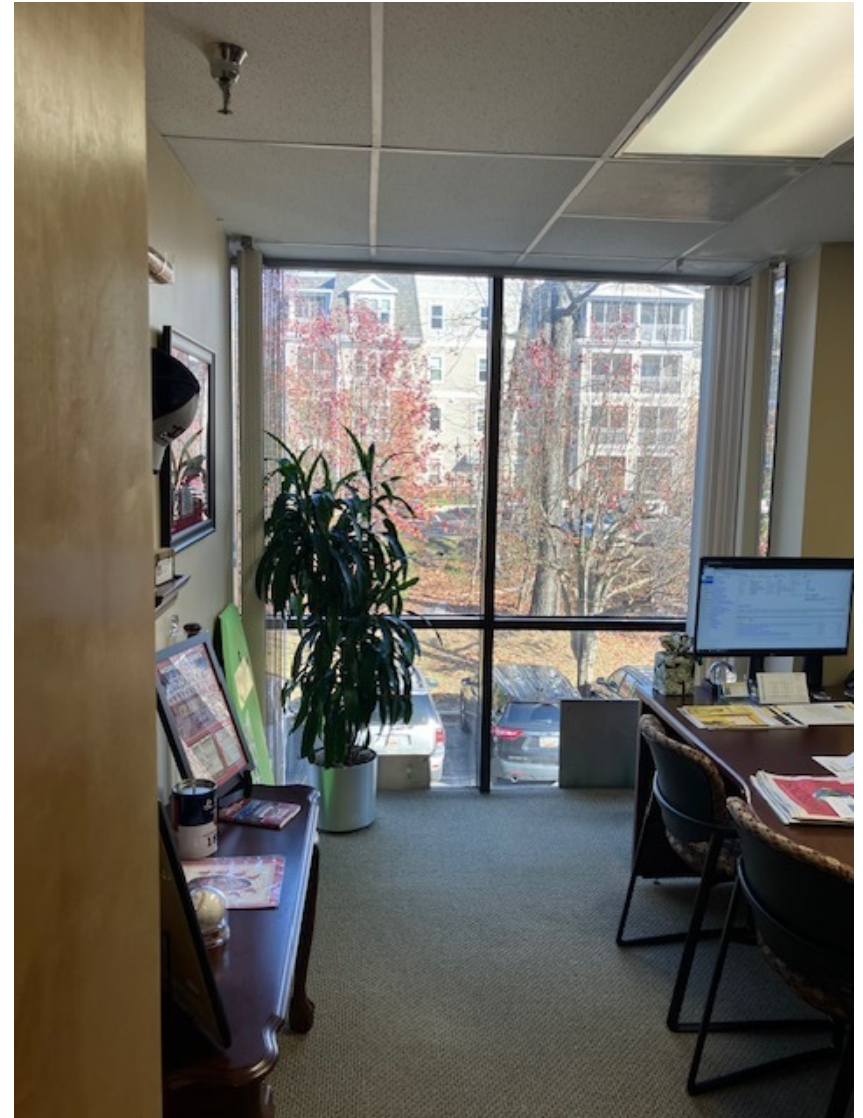
All sources deemed reliable, but not guaranteed by Douglas Commercial or its agents. Listing information is subject to price changes, errors, omissions, corrections. status changes or withdrawal.

FOR LEASE

SUITE 201

479 JUMPERS HOLE ROAD

479 Jumpers Hole Road
Severna Park, MD 21146



Presented By:

Scott Douglas

301.655.8253

sdouglas@douglascommercial.com

DOUGLAS
COMMERCIAL

5 PARK PLACE UNIT 524, ANNAPOLIS, MD 21401

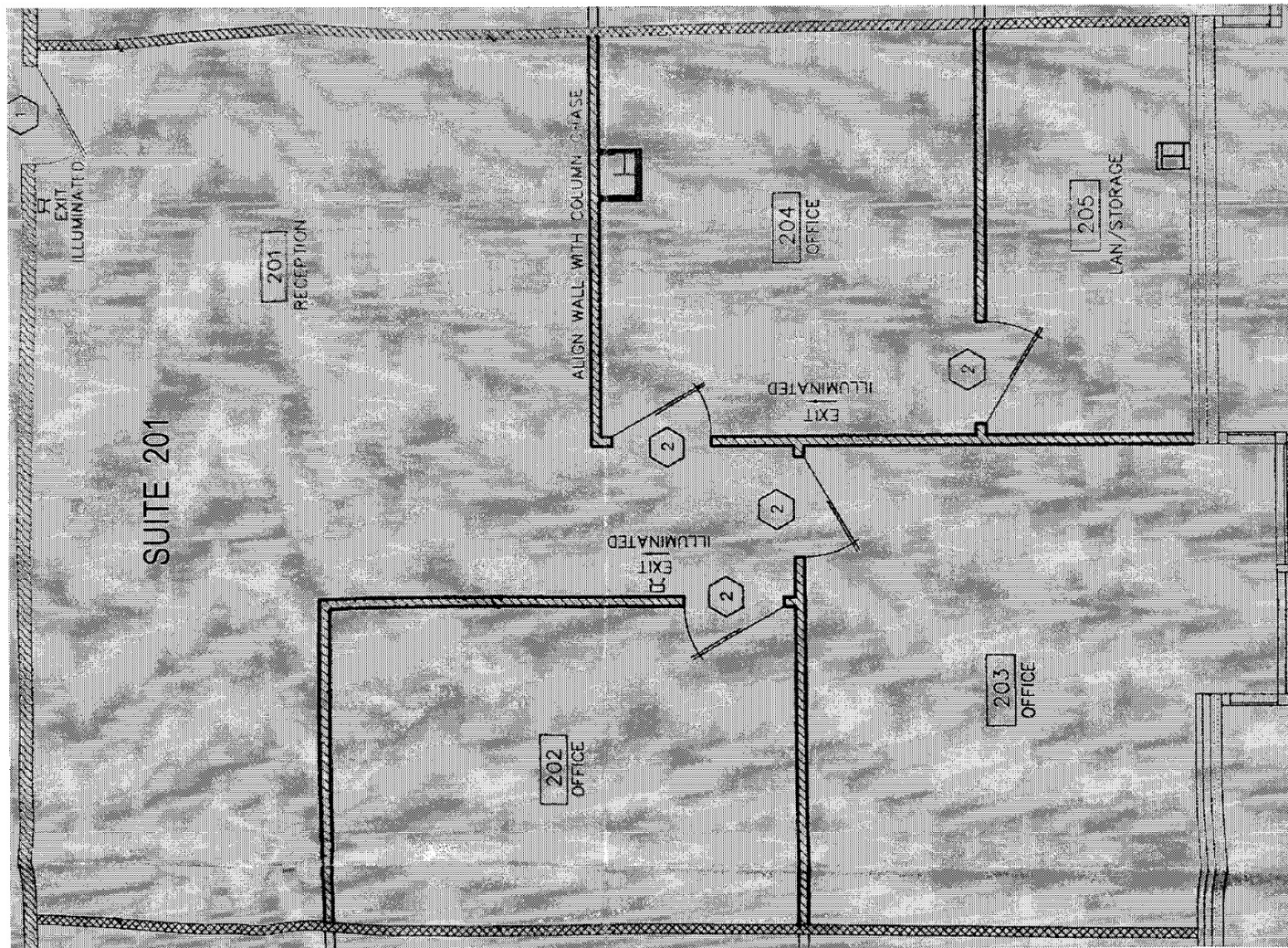
All sources deemed reliable, but not guaranteed by Douglas Commercial or its agents. Listing information is subject to price changes, errors, omissions, corrections. status changes or withdrawal.

FLOOR PLAN

SUITE 201

479 JUMPERS HOLE ROAD

479 Jumpers Hole Road
Severna Park, MD 21146



Presented By:

Scott Douglas

301.655.8253

sdouglas@douglascommercial.com

DOUGLAS
COMMERCIAL

5 PARK PLACE UNIT 524, ANNAPOLIS, MD 21401

All sources deemed reliable, but not guaranteed by Douglas Commercial or its agents. Listing information is subject to price changes, errors, omissions, corrections. status changes or withdrawal.

FOR LEASE SUITE 306

479 JUMPERS HOLE ROAD

479 Jumpers Hole Road
Severna Park, MD 21146



Presented By:

Scott Douglas

301.655.8253

sdouglas@douglascommercial.com

DOUGLAS
COMMERCIAL

5 PARK PLACE UNIT 524, ANNAPOLIS, MD 21401

All sources deemed reliable, but not guaranteed by Douglas Commercial or its agents. Listing information is subject to price changes, errors, omissions, corrections. status changes or withdrawal.

FOR LEASE SUITE 306

479 JUMPERS HOLE ROAD

479 Jumpers Hole Road
Severna Park, MD 21146



Presented By:

Scott Douglas

301.655.8253

sdouglas@douglascommercial.com

DOUGLAS
COMMERCIAL

5 PARK PLACE UNIT 524, ANNAPOLIS, MD 21401

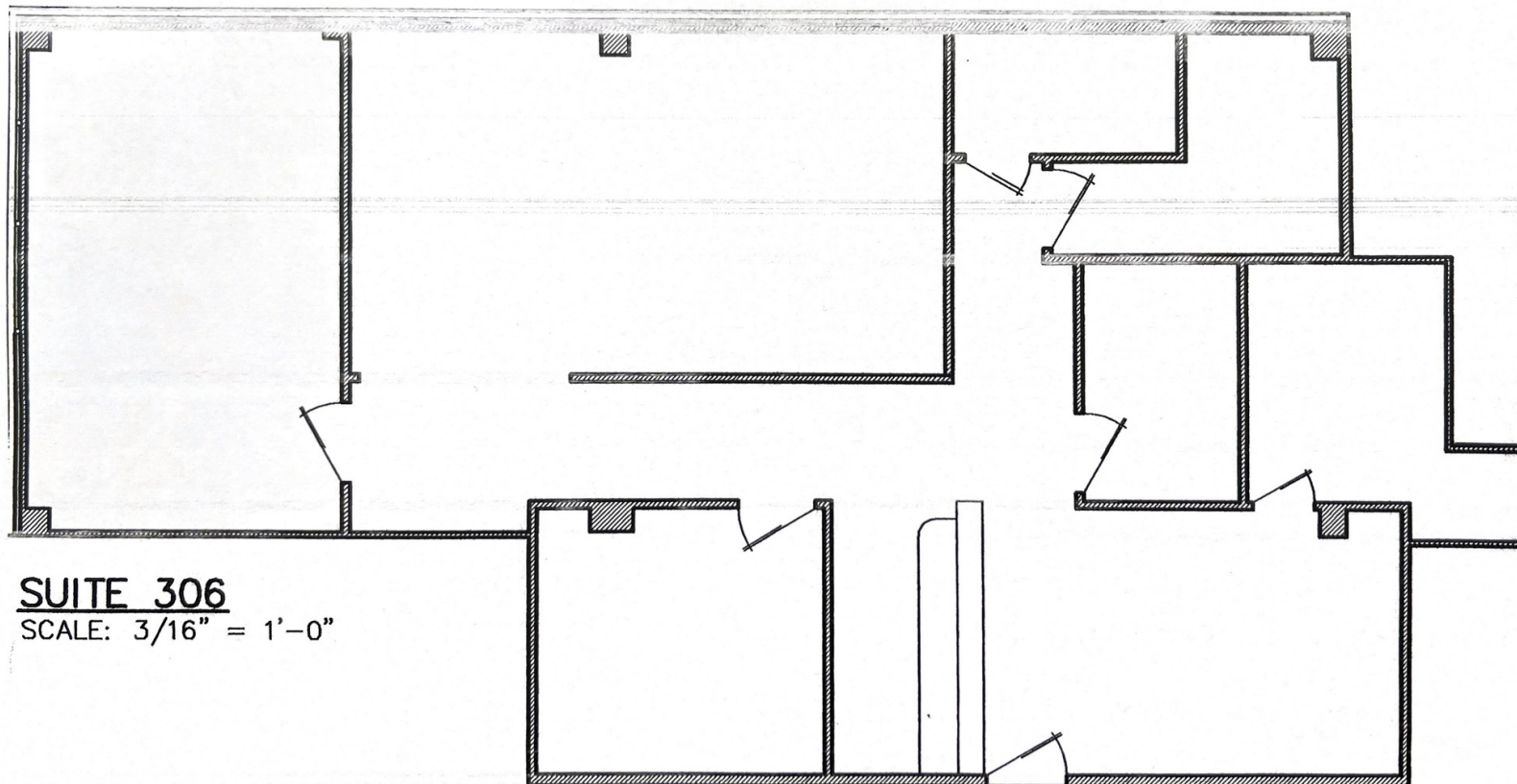
All sources deemed reliable, but not guaranteed by Douglas Commercial or its agents. Listing information is subject to price changes, errors, omissions, corrections. status changes or withdrawal.

FOR LEASE

FLOOR PLAN-SUITE 306

479 JUMPERS HOLE ROAD

479 Jumpers Hole Road
Severna Park, MD 21146



SUITE 306
SCALE: 3/16" = 1'-0"

Presented By:
Scott Douglas
301.655.8253
sdouglas@douglascommercial.com

DOUGLAS
COMMERCIAL

5 PARK PLACE UNIT 524, ANNAPOLIS, MD 21401

All sources deemed reliable, but not guaranteed by Douglas Commercial or its agents. Listing information is subject to price changes, errors, omissions, corrections, status changes or withdrawal.

FOR LEASE OFFICE SPACE

479 JUMPERS HOLE ROAD

479 Jumpers Hole Road
Severna Park, MD 21146

LEASE INFORMATION

Lease Type:	Full Service	Lease Term:	60 months
Total Space:	1,200 - 1,645(+/-) SF	Lease Rate:	\$23.00 SF/yr

AVAILABLE SPACES

SUITE	TENANT	SIZE (SF)	LEASE TYPE	LEASE RATE	DESCRIPTION
Suite 201	Available	1,200 SF	Full Service	\$23.00 SF/yr	-
Suite 306	Available	1,645 SF	Full Service	\$23.00 SF/yr	Available 9/1/24



Presented By:

Scott Douglas

301.655.8253

sdouglas@douglascommercial.com

DOUGLAS
COMMERCIAL

5 PARK PLACE UNIT 524, ANNAPOLIS, MD 21401

All sources deemed reliable, but not guaranteed by Douglas Commercial or its agents. Listing information is subject to price changes, errors, omissions, corrections. status changes or withdrawal.

FOR LEASE OFFICE SPACE

479 JUMPERS HOLE ROAD

479 Jumpers Hole Road
Severna Park, MD 21146



SCOTT DOUGLAS

Direct: 301.655.8253
sdouglas@douglascommercial.com



DOUGLAS COMMERCIAL

5 Park Place Unit 524 , Annapolis, MD 21401
301.655.8253

Presented By:

Scott Douglas

301.655.8253
sdouglas@douglascommercial.com



5 PARK PLACE UNIT 524, ANNAPOLIS, MD 21401

All sources deemed reliable, but not guaranteed by Douglas Commercial or its agents. Listing information is subject to price changes, errors, omissions, corrections. status changes or withdrawal.