

FOR SALE

SPRING CREEK PLAZA



MOUNTAIN WEST
COMMERCIAL REAL ESTATE

CODY BLACK, OWNER/AGENT

cblack@mwcre.com

direct 385.233.9141

[View Profile](#)

PROPERTY DETAILS

1195 NORTH SPRING CREEK PLAZA, SPRINGVILLE, UT 84663

- For Sale: \$4,047,801.80 or \$186.20 PSF
- 6% cap rate factoring in 5% vacancy
- Current lease rate: \$21,304.22/month base rent
- NNN fees estimated at \$3,260.85/month
- Suite D-F: 21,739 SF
- Suite D: 6,073 SF
- Suite E-F: 15,666 SF
- Suite D: Shared Outdoor Dock High, 12'x12' roll up door
- Beautifully landscaped
- 8 ground level doors
- Abundant parking

**FULL SERVICE
COMMERCIAL REAL ESTATE**

2015 West Grove Parkway, Ste J

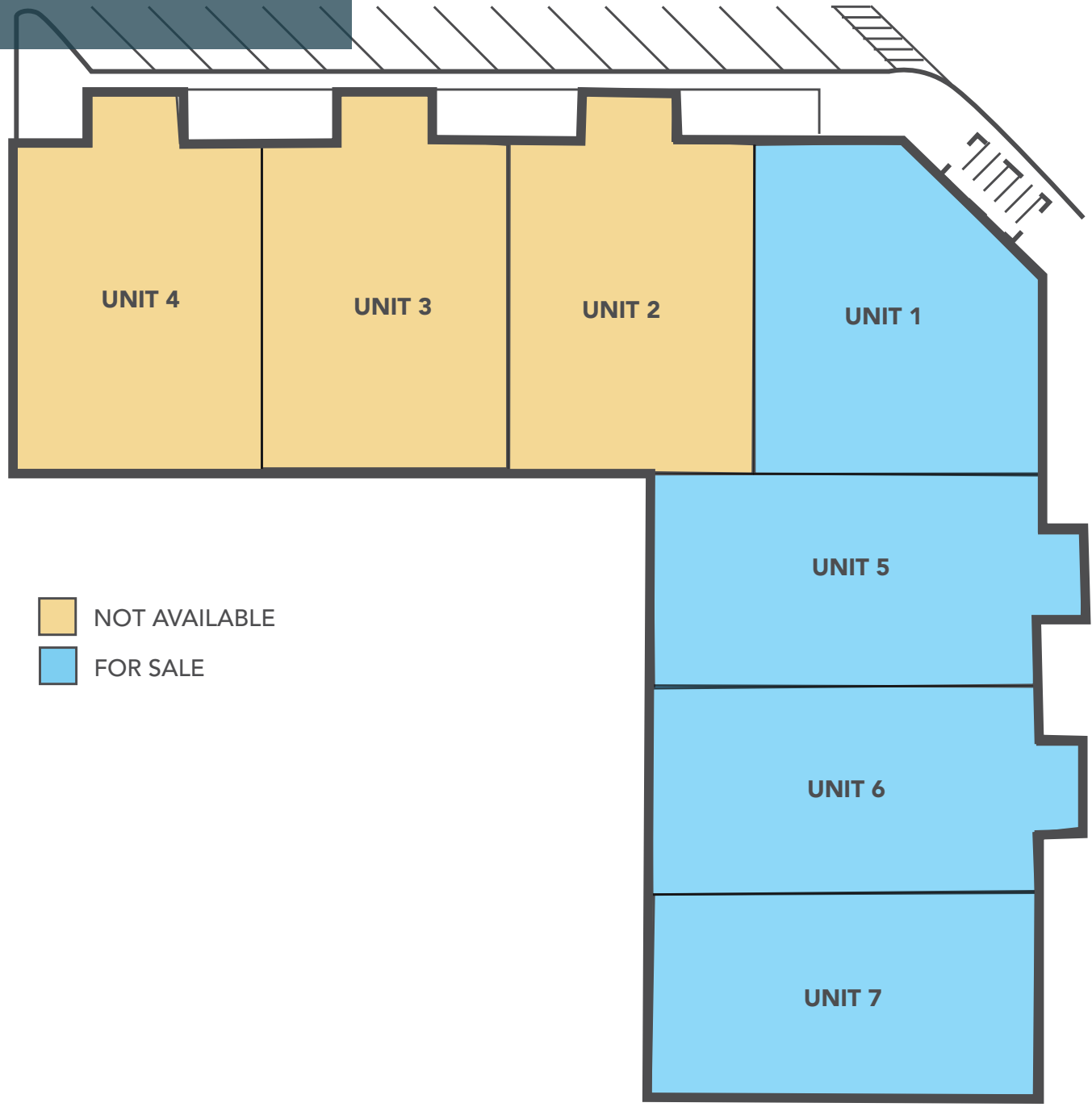
Pleasant Grove, UT 84062

Office 385.233.9140

www.mwcre.com

SPRING CREEK PLAZA

SITE PLAN



- NOT AVAILABLE
- FOR SALE

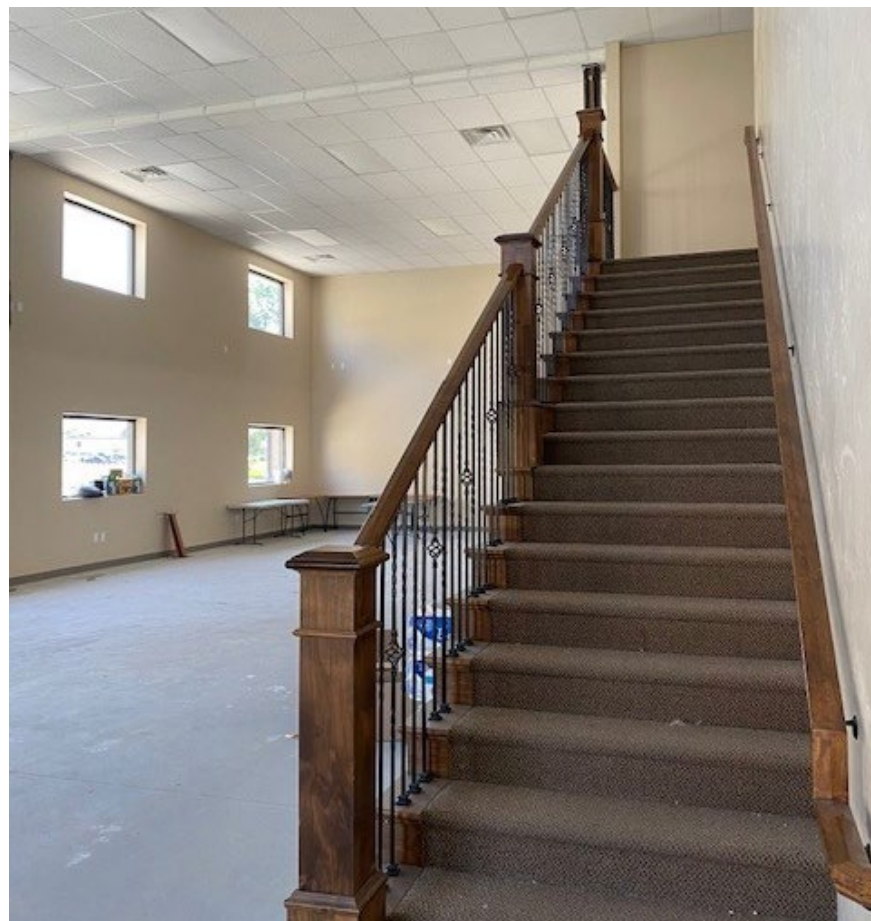


MOUNTAIN WEST
COMMERCIAL REAL ESTATE

CODY BLACK, OWNER/AGENT
cblack@mwcre.com
direct 385.233.9141
[View Profile](#)

**FULL SERVICE
COMMERCIAL REAL ESTATE**
2015 West Grove Parkway, Ste J
Pleasant Grove, UT 84062
Office 385.233.9140
www.mwcre.com

This statement with the information it contains is given with the understanding that all negotiations relating to the purchase, renting or leasing of the property described above shall be conducted through this office. The above information while not guaranteed has been secured from sources we believe to be reliable.



MOUNTAIN WEST
COMMERCIAL REAL ESTATE

CODY BLACK, OWNER/AGENT

cblack@mwcre.com

direct 385.233.9141

[View Profile](#)

**FULL SERVICE
COMMERCIAL REAL ESTATE**

2015 West Grove Parkway, Ste J

Pleasant Grove, UT 84062

Office 385.233.9140

www.mwcre.com



CODY BLACK, OWNER/AGENT

cblack@mwcre.com

direct 385.233.9141

[View Profile](#)

MOUNTAIN WEST
COMMERCIAL REAL ESTATE

**FULL SERVICE
COMMERCIAL REAL ESTATE**

2015 West Grove Parkway, Ste J

Pleasant Grove, UT 84062

Office 385.233.9140

www.mwcre.com