

LAND FOR SALE | 3.47acre

Prime Land in Buford, GA, located just minutes away from the Mall of Georgia. This prime property offers excellent proximity to retail, entertainment, restaurants, and offices, with convenient access to I-85, I-985, and GA-316. Zoned OI, making it ideal for a wide range of uses including offices, schools, churches, light warehousing, commissary kitchens, catering services, or multifamily development.



1225 Old Peachtree Lawrenceville GA 30043



PROPERTY FACTS



\$2,100,000

Sale Price



± 3.47 AC

LAND SIZE

PROPERTY HIGHLIGHTS

- Excellent Location only mins away to Mall of Georgia / Top Golf and Easy access to I-85, I-985, and GA-316
- Prime land surrounded by retail, restaurants, offices, and entertainment destinations
- Zoning: OI (Office Institutional) A variety of professional and community oriented uses great site for offices, schools, churches, light warehousing, commissary kitchens, catering services, or multifamily development.

IDEAL USES

- Offices, School, Daycare, Church
- Commissary Kitchens, Catering Facility
- Multifamily, Hotel
- Light Flex Warehouse

1225 Old Peachtree Lawrenceville GA 30043



SHOWROOM / WAREHOUSE RENDERING

FRONT VIEW

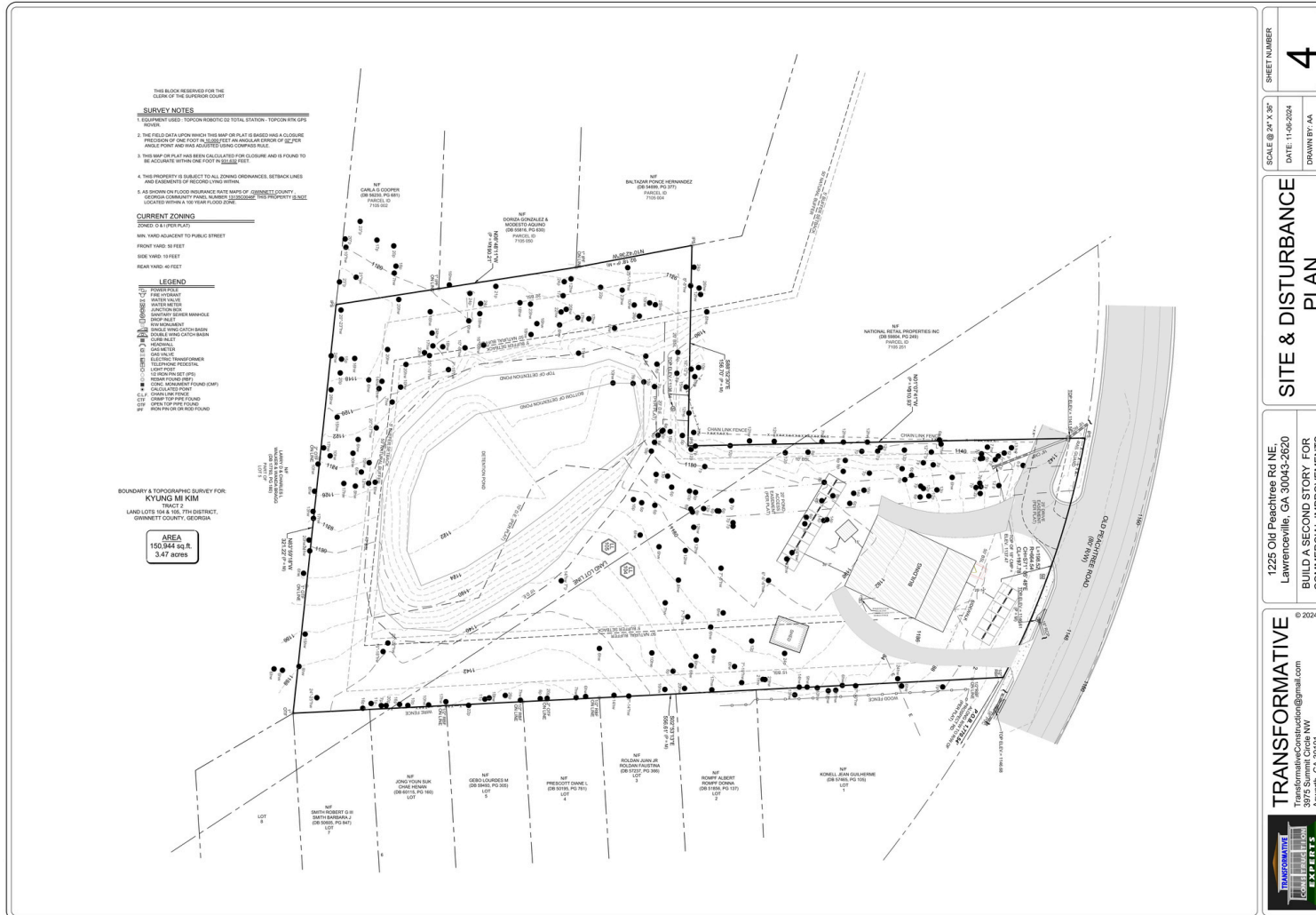


SHOWROOM / WAREHOUSE RENDERING

BACK VIEW

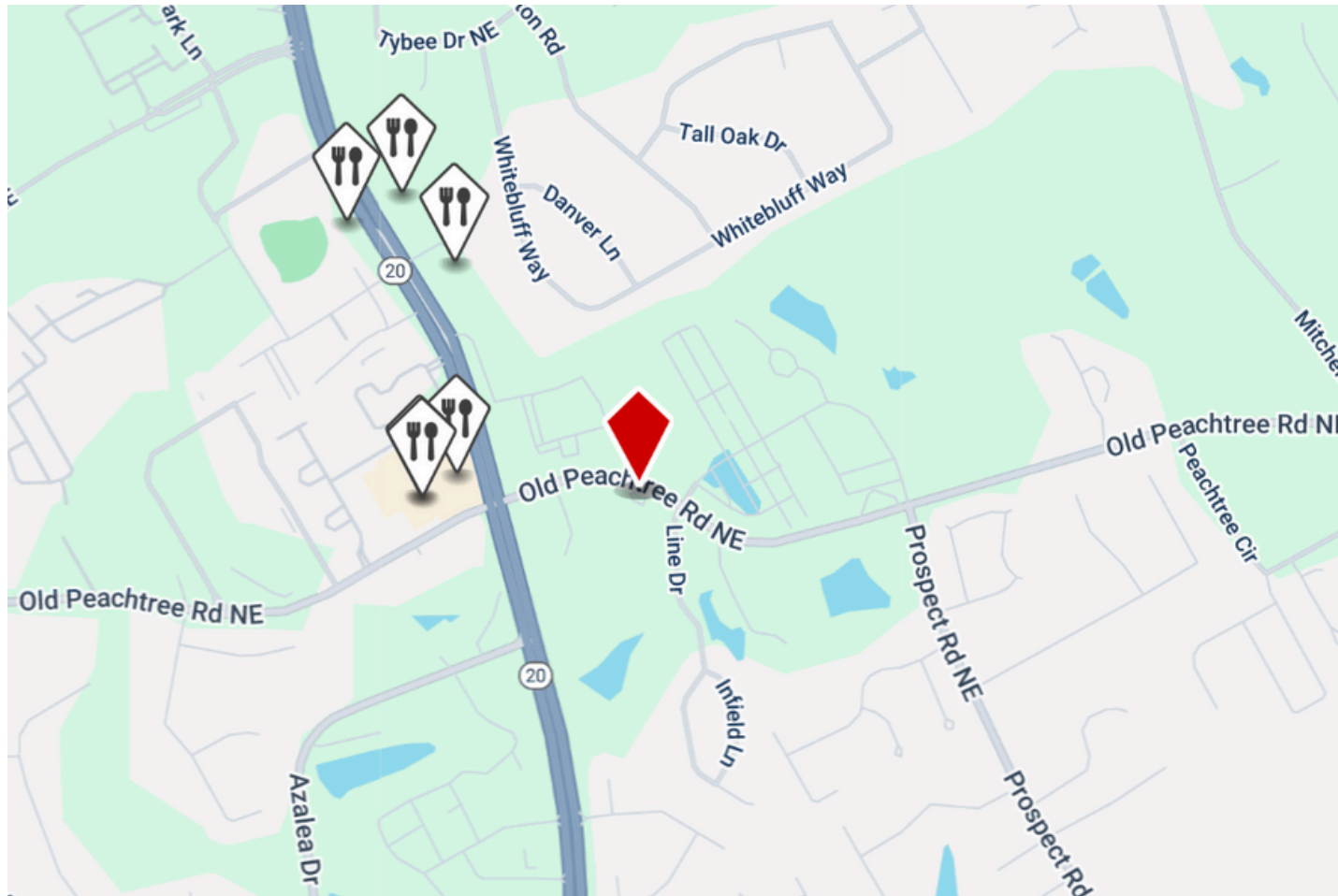
SITE & DISTURBANCE PLAN

1225 Old Peachtree Lawrenceville GA 30043



DEMOGRAPHICS

1225 Old Peachtree Lawrenceville GA 30043

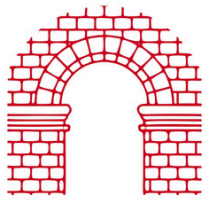


LOCATION ADVANTAGES

- Strategically located in Lawrenceville's growing business corridor
- Quick access to I-85, GA-316, and Sugarloaf Parkway
- Surrounded by medical, educational, and light industrial developments
- Strong demographics and workforce availability within minutes

FULL-SERVICE COMMERCIAL REAL ESTATE

LOCAL INSIGHT. NATIONAL REACH.



VALUE MAXIMIZED

Your goals drive us to maximize return on your investment.

SERVICE PERSONALIZED

Communication. Responsiveness. Results.
Your needs inspire us to go above and beyond.

RELATIONSHIPS BUILT

Our team approach enables success.

LEASING

INVESTMENT SALES

PROPERTY MANAGEMENT

TENANT REPRESENTATION



GET IN TOUCH

southernequitycommercial.com
southernequitycommercial@gmail.com
404 - 449 - 6275

695 Mansell Rd
Suite 120
Roswell, GA 30076

PRESENTED BY:

JULIE MEI

C: (770) 769-7028
julie.mei@kw.com



1225 Old Peachtree Lawrenceville GA 30043