



226
NORTH
MOR
GAN

exclusively leased by

BA BRADFORD
ALLEN



226 N. Morgan Street, Chicago, IL

226
NORTH
MOR
GAN

FULL-FLOOR CORNER OFFICE IN THE HEART OF FULTON MARKET

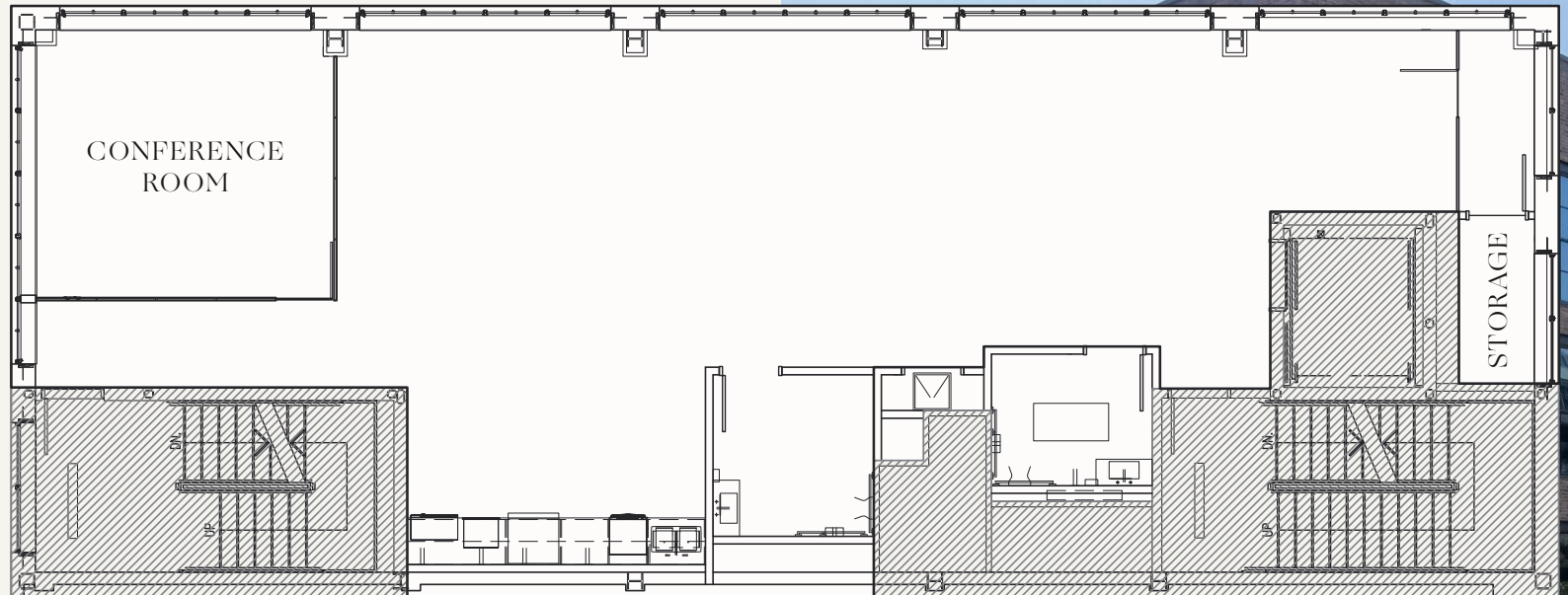
226 N. Morgan is a five-story, new construction building at the corner of Morgan and Fulton Streets, featuring a full-floor corner office opportunity. Located in the heart of Fulton Market / West Loop, the area is home to major corporate offices including McDonald's, Google, WPP, Coca-Cola, John Deere, and Mondelez International. The property is just two blocks north of Randolph Street's "Restaurant Row," surrounded by top hospitality venues such as Nobu Hotel, The Hoxton, and Time Out Market, and is only one block from the Morgan Street CTA station.

SUITE 200



BA BRADFORD ALLEN

2,670 SF

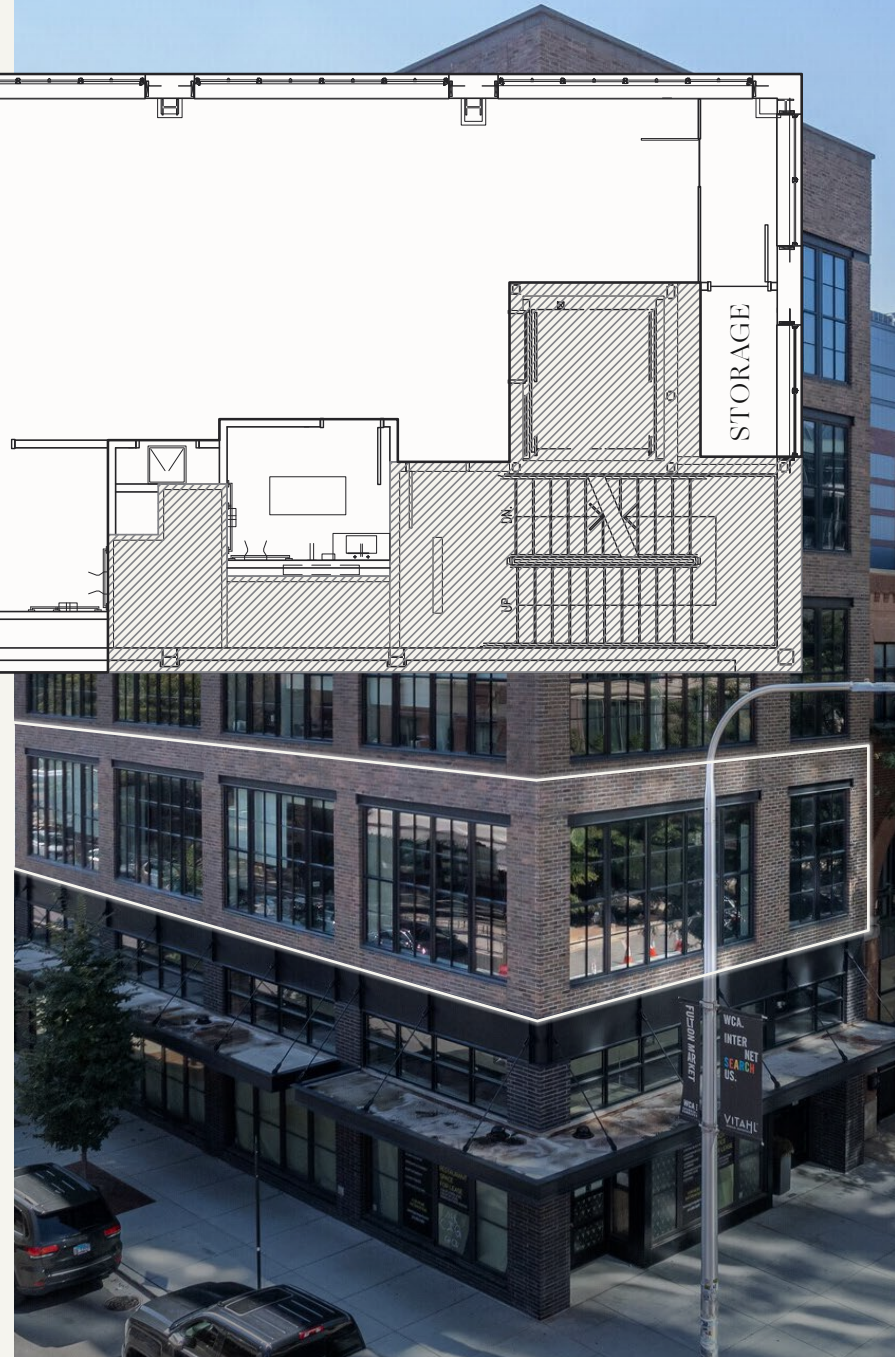


226
NORTH
MOR
GAN

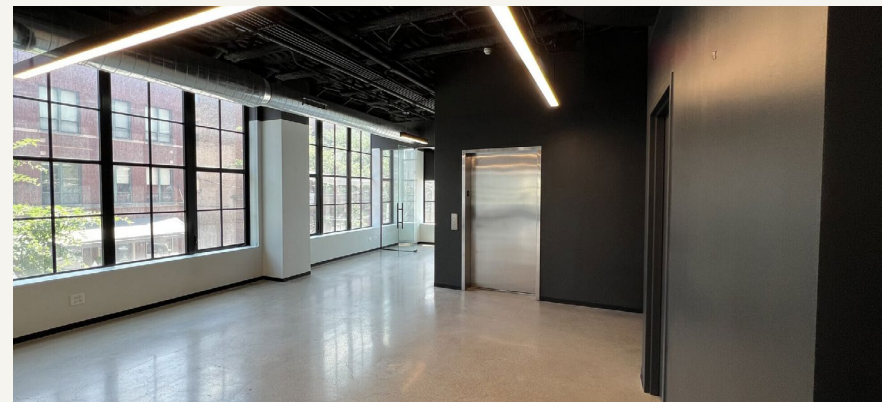
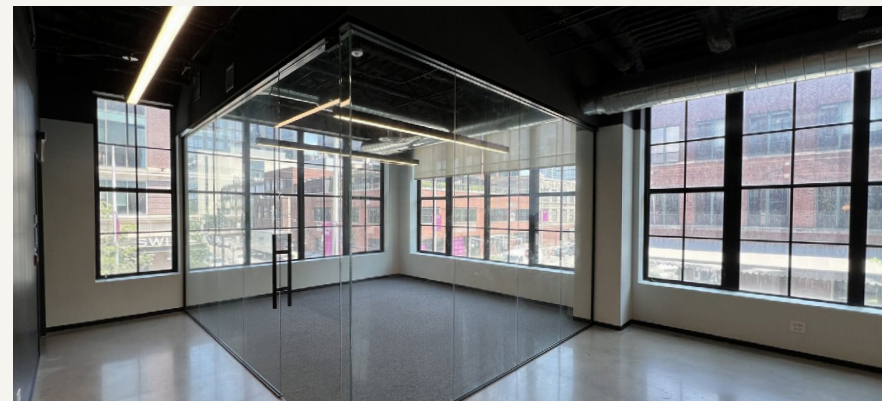
FEATURES

- Full-floor corner office suite with ample natural light
- New construction high-end finishes
- Secured elevator private entry
- Ample open space with operable windows
- One glass conference room
- Two private bathrooms
- Kitchenette with espresso bar
- Call room and storage space

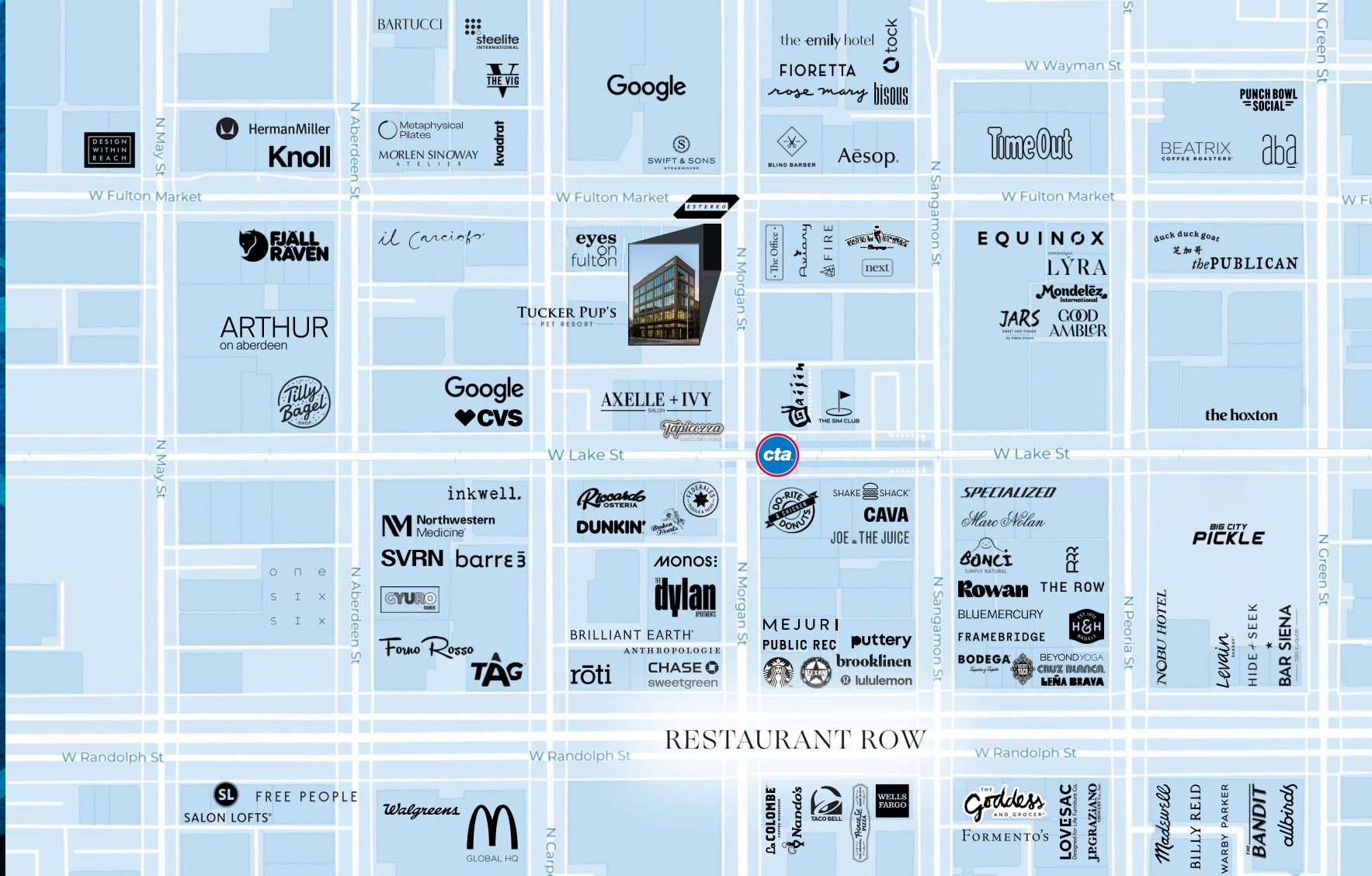
VIRTUAL TOUR



226
NORTH
MOR
GAN



226 NORTH MORGAN



AREA HIGHLIGHTS

- Close to major corporate offices (McDonald's, Google, Coca-Cola, Mondelez, John Deere, Tock)
- Steps from Randolph Street's "Restaurant Row"
- Block from CTA Green/Pink Line "L" Station
- Easy access to I-90/94 and Ogilvie Transportation Center
- Surrounded by ample dining, retail, and hospitality

BA BRADFORD
ALLEN

226
NORTH
MORGAN

226 N. Morgan Street, Chicago, IL



exclusively leased by
BA BRADFORD
ALLEN

For more information
or to arrange a tour,
please contact:

CRAIG NADBORNE
cnadborne@bradfordallen.com
(312) 994-5796

MICHAEL FLINCHBAUGH
mflinchbaugh@bradfordallen.com
(312) 741-8121