



FOR LEASE

CURVE CORPORATE CENTER

Property Highlights

- 7,119 ± SF available
- \$22.00/RSF + UTIL
- Walton signage opportunity
- Dedicated Receiving/Storage Area with Roll Up Door
- Less than 2 miles from I-49
- Located near SAM'S Club Headquarters and Walmart Home Office

For more information, please contact:

Stephanie Farmer

+1 479 845 3022

sfarmer@sagepartners.com

Marshall Saviers

+1 479 845 3042

mtsaviers@sagepartners.com

479 845 3000

sagepartners.com

*information deemed reliable but not guaranteed

PHOTOS

3401 SE MACY RD | BENTONVILLE, AR



CUSHMAN &
WAKEFIELD

sage
PARTNERS



FLOOR PLAN

3401 SE MACY RD | BENTONVILLE, AR



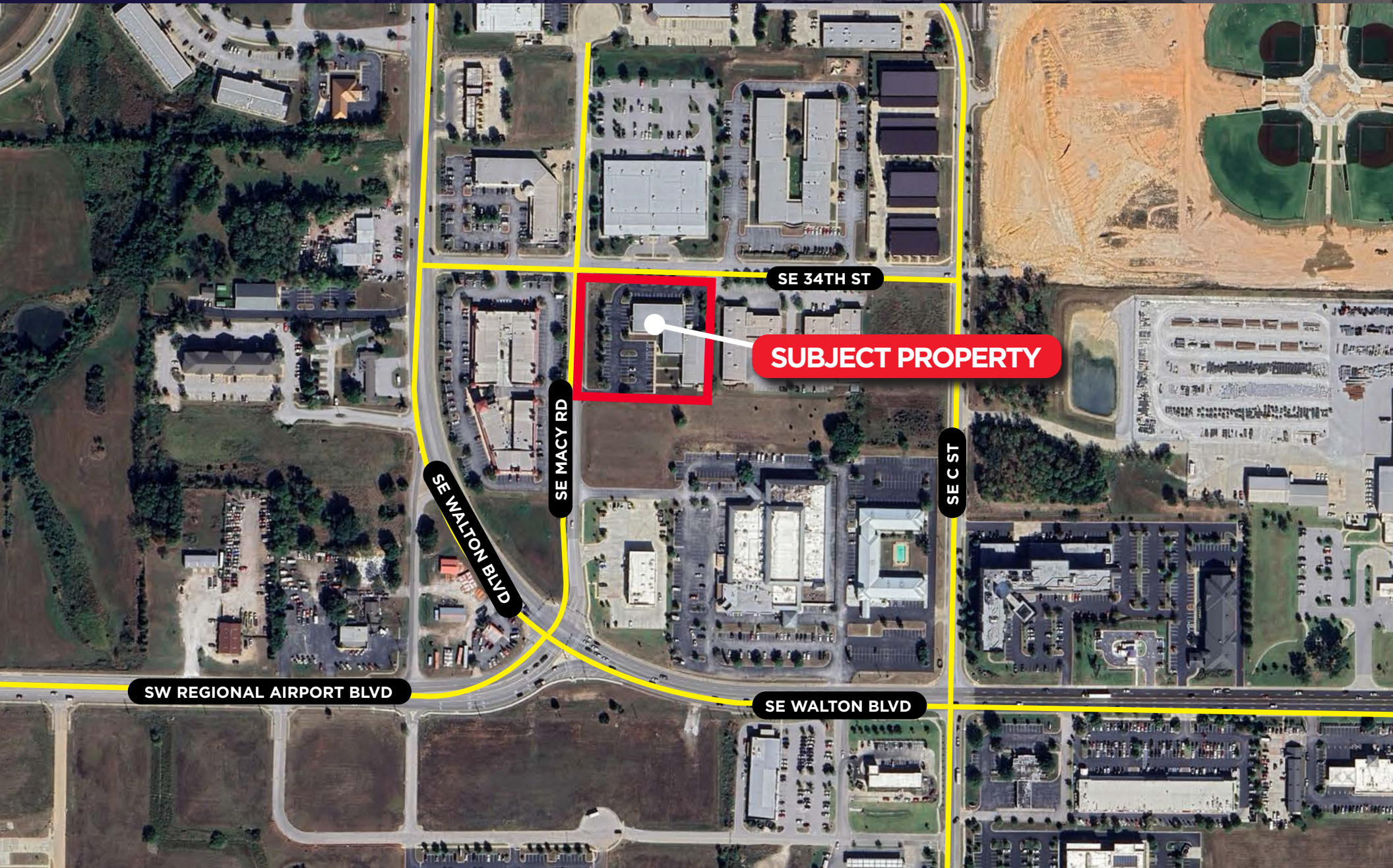
SITE MAP

3401 SE MACY RD | BENTONVILLE, AR



CUSHMAN &
WAKEFIELD

sage
PARTNERS



AERIAL

3401 SE MACY RD | BENTONVILLE, AR



CUSHMAN &
WAKEFIELD

sage
PARTNERS

