

AVAILABLE

631 Research Rd North Chesterfield, VA 23236



Exclusive Agent:

BYRON HOLMES, CCIM, SIOR
(804) 521-1448
byron@porterinc.com

HIGHLIGHTS

- 4,200 SF Warehouse with Small Office
- Zoned C-5 (permits auto repair and outside storage)
- 0.46 Acres Parking and Storage
- (2) 12' Drive-In Doors
- 12' 6" Ceiling Height
- FOR LEASE: \$4,000/Month plus Utilities

4801 Radford Avenue | P.O. Box 6482
Richmond, VA 23230
www.porterinc.com
8043537994

PORTER
REALTY

CORFAC
INTERNATIONAL

SIOR

CCIM

This information has been prepared by Porter Realty Company, Inc. for marketing purposes only. No representation or warranty, expressed or implied, is made as to the accuracy of the foregoing information. Terms of sale or lease and availability are subject to change or withdrawal without notice.

TABLE OF CONTENTS

631 Research Road | North Chesterfield, VA 23236

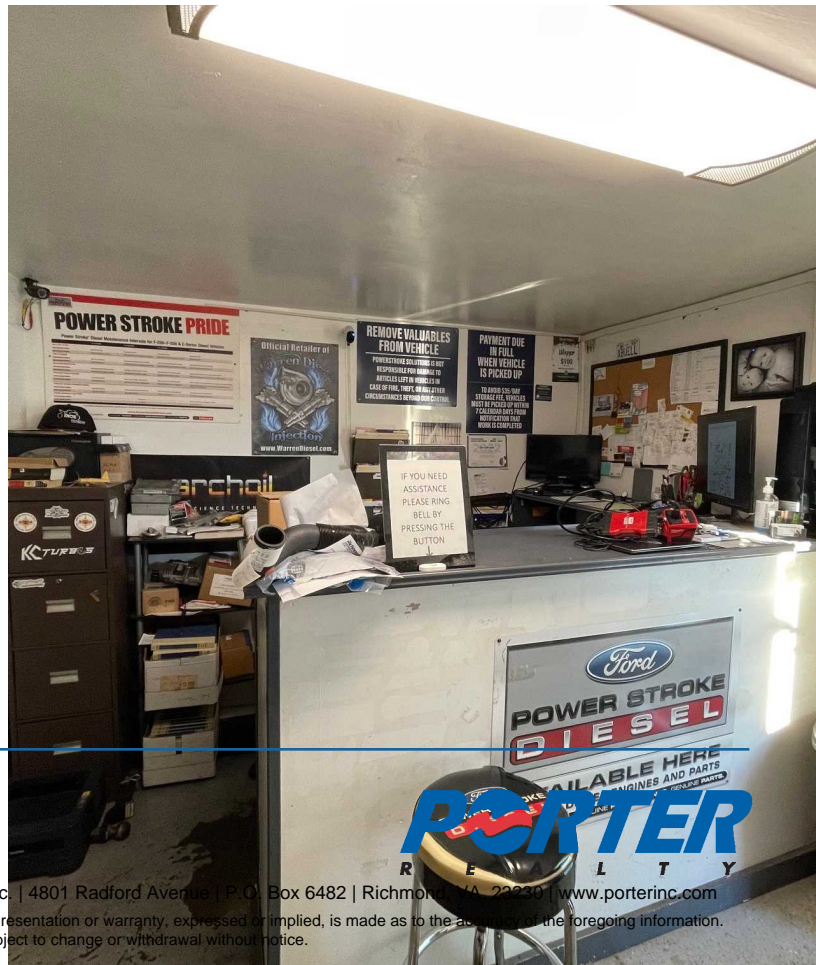
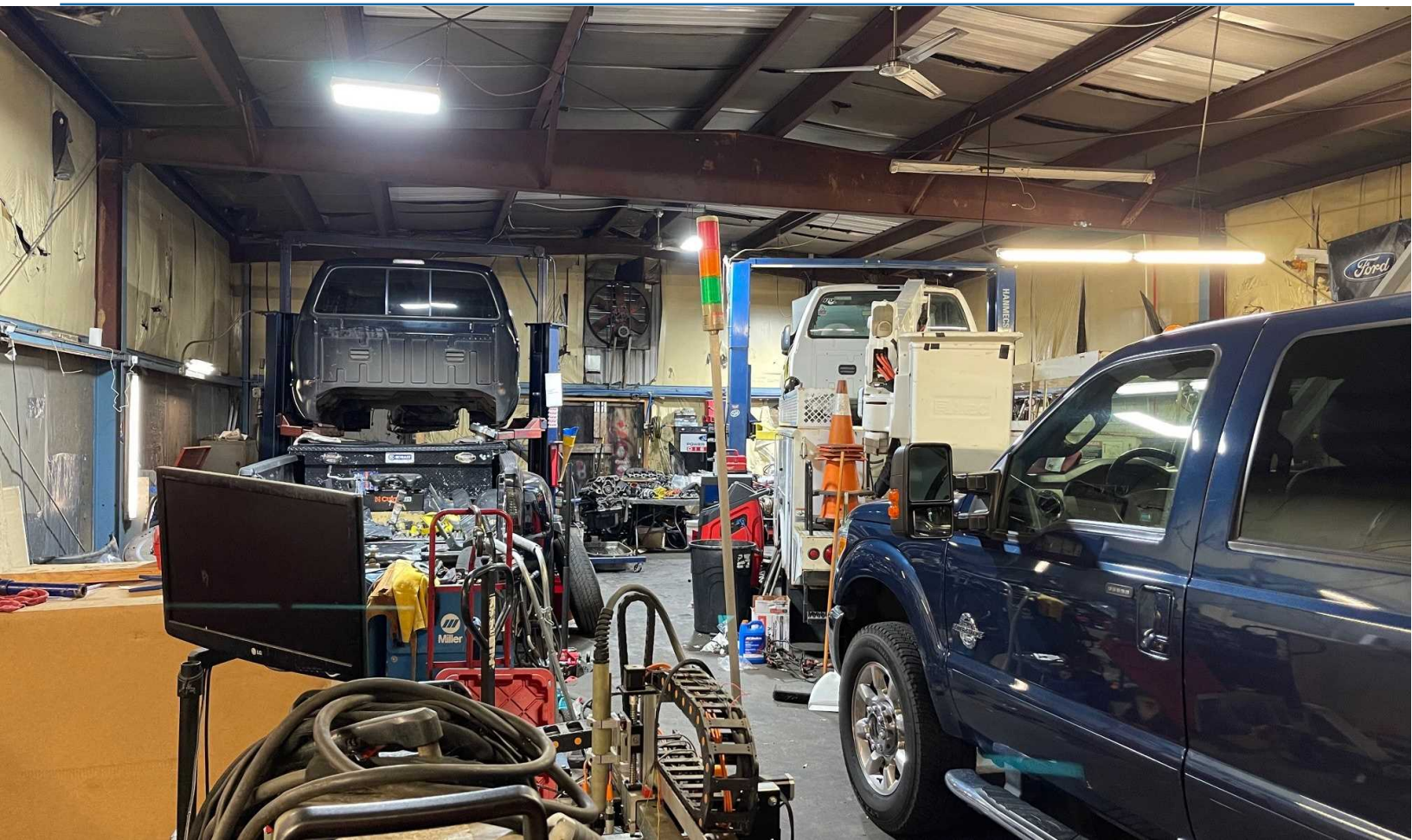
Property Photos	3
Aerial Map	4

Byron Holmes, CCIM, SIOR
(804) 521-1448
byron@porterinc.com



PROPERTY PHOTOS

631 Research Road | North Chesterfield, VA 23236

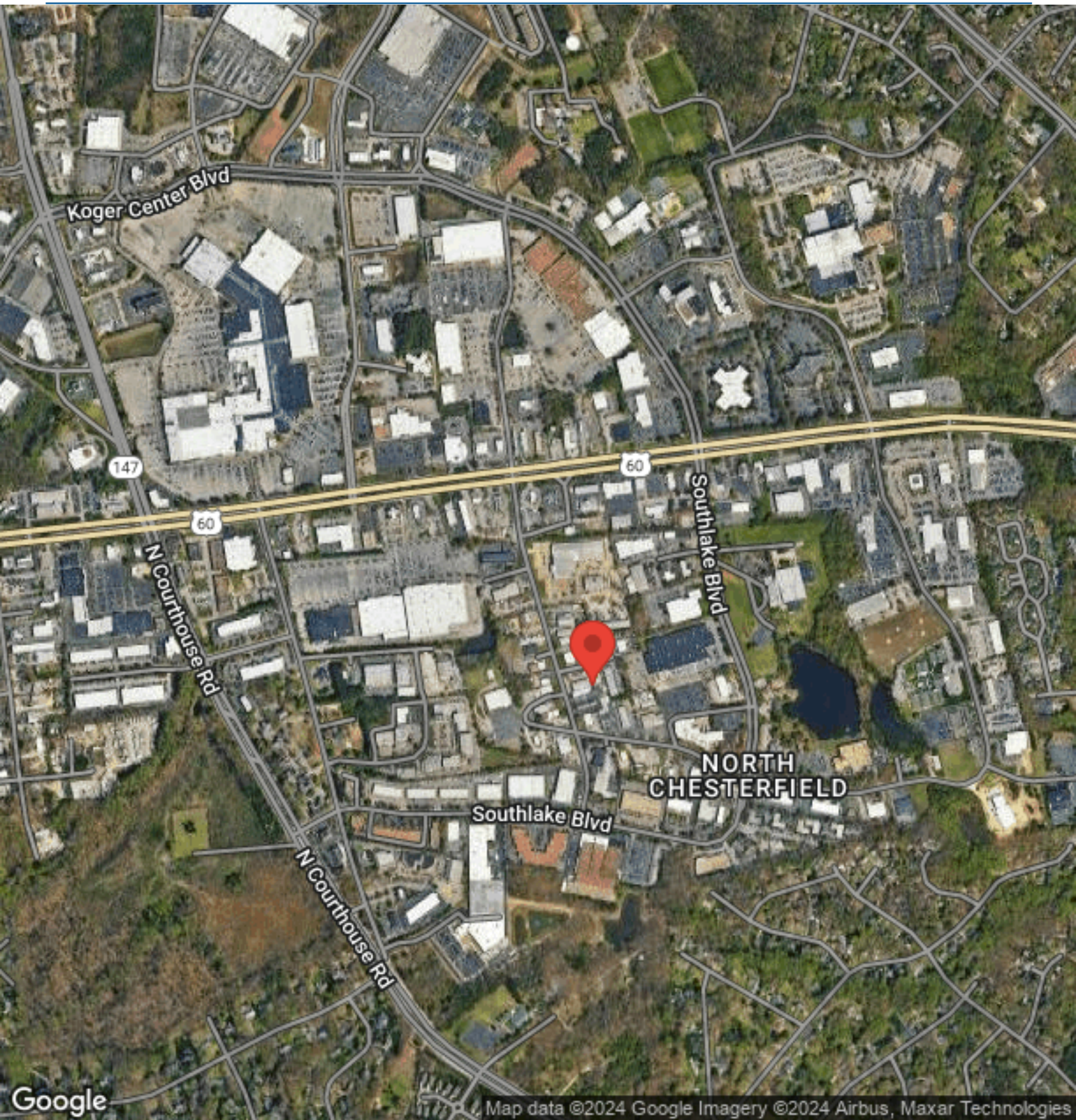


Porter Realty Company, Inc. | 4801 Radford Avenue | P.O. Box 6482 | Richmond, VA 23230 | www.porterinc.com

This information has been prepared by Porter Realty Company, Inc. for marketing purposes only. No representation or warranty, expressed or implied, is made as to the accuracy of the foregoing information. Terms of sale or lease and availability are subject to change or withdrawal without notice.

AERIAL MAP

631 Research Road | North Chesterfield, VA 23236



Byron Holmes, CCIM, SIOR
(804) 521-1448
byron@porterinc.com



Porter Realty Company, Inc. | 4801 Radford Avenue | P.O. Box 6482 | Richmond, VA 23230 | www.porterinc.com

This information has been prepared by Porter Realty Company, Inc. for marketing purposes only. No representation or warranty, expressed or implied, is made as to the accuracy of the foregoing information. Terms of sale or lease and availability are subject to change or withdrawal without notice.