

11340
Olympic Blvd



A DIVISION OF



FOR LEASE - 690 - 3,292 SF
SAWTELLE OLYMPIC CAMPUS

11340 Olympic Blvd

- The recently reimagined CPLA is within walking distance of the bustling Sawtelle restaurant corridor.
- Boutique, three-story courtyard-style building with walkable accessibility from street level and secured covered parking.
- Experience tranquil open-air environments, outdoor seating, and beautifully landscaped pathways in a Zen-like urban oasis.
- Newly renovated suites provide efficient floorplans, private offices, conference rooms, employee kitchens, and more.
- Centrally located to West LA's main arterial roads and the 405 and 10 freeways, allowing for efficient commutes.



No warranty or representation is made to the accuracy of the foregoing information. Terms of sale or lease are subject to change or withdrawal without notice.



PREMISES

- FIRST FLOOR

- Suite 110: 2,267 SF
- Suite 138: 2,173 SF
- Suite 150: 885 SF
- Suite 155: 1,421 SF Leased
- Suite 185: 3,292 SF

- SECOND FLOOR

- Suite 207: 901 SF Leased
- Suite 221: 891 SF
- Suite 242: 3,100 SF
- Suite 245: 1,200 SF

- THIRD FLOOR

- Suite 303: 827 SF Leased
- Suite 305: 976 SF
- Suite 320: 799 SF
- Suite 340: 1,483 SF
- Suite 355: 3,166 SF
- Suite 380: 690 SF Leased
- Suite 381: 1,817 SF

ADDRESS

11340 W Olympic Blvd
Los Angeles, CA 90064

RENT / PRICE

Call Agent

WALK SCORE

Walker's Paradise
93

PARKING

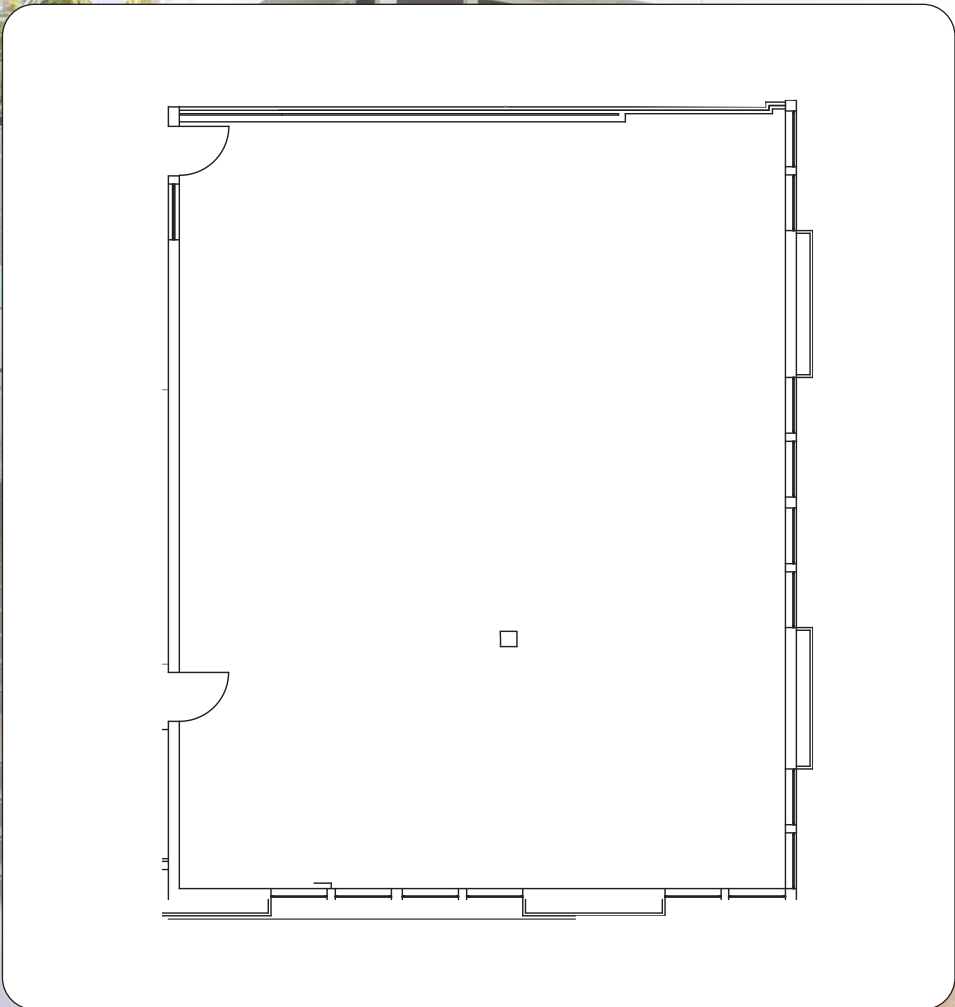
3:1,000

ZONING

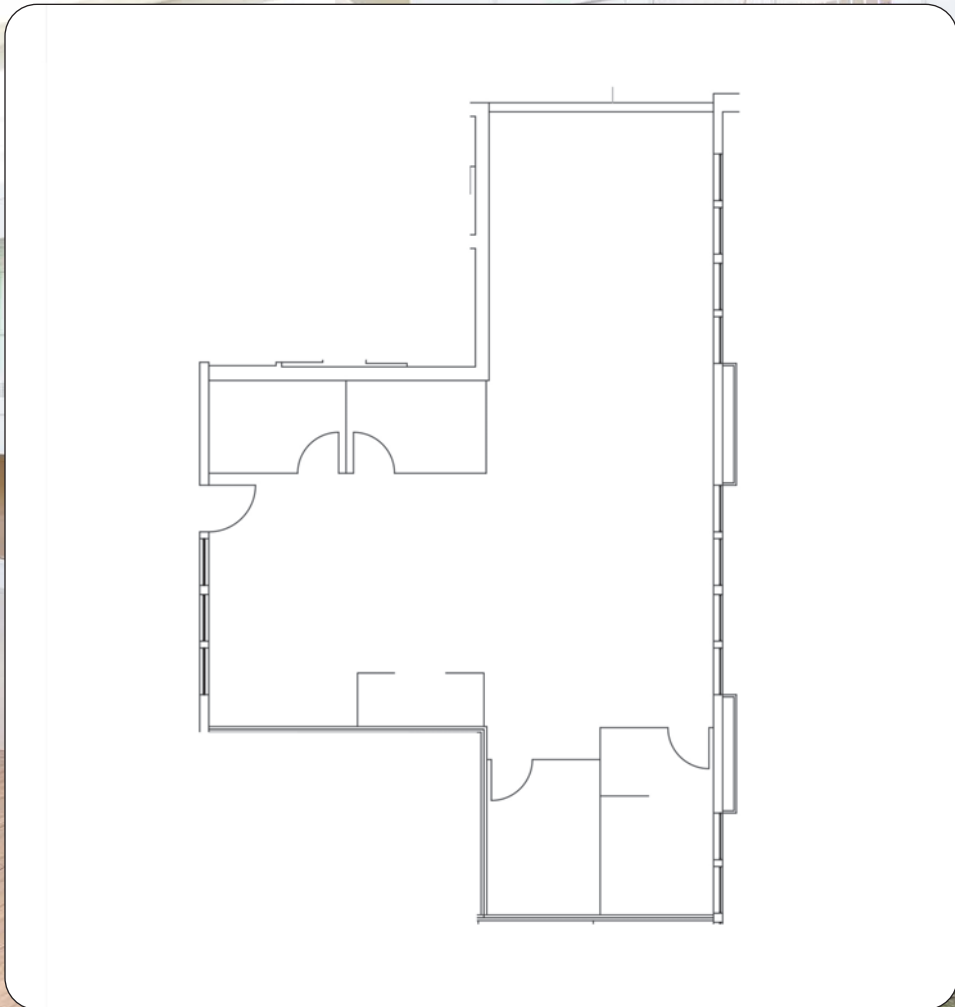
C2-1



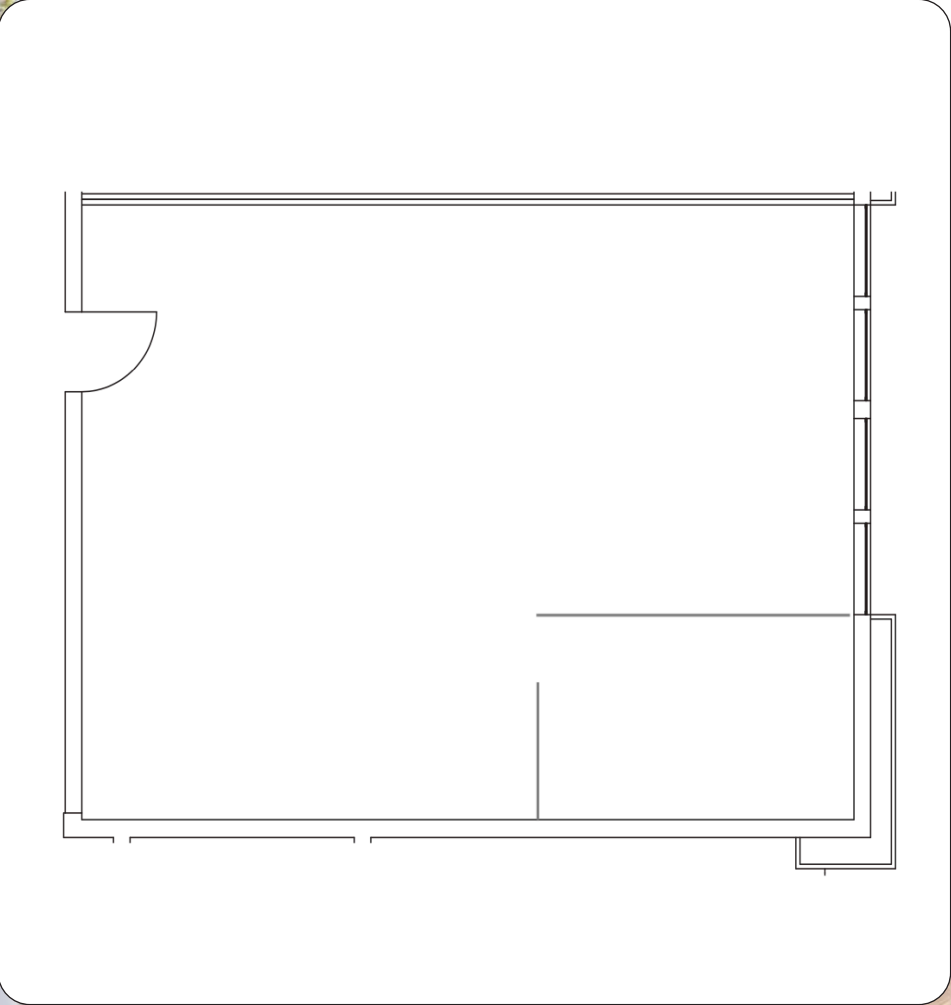
SUITE 110



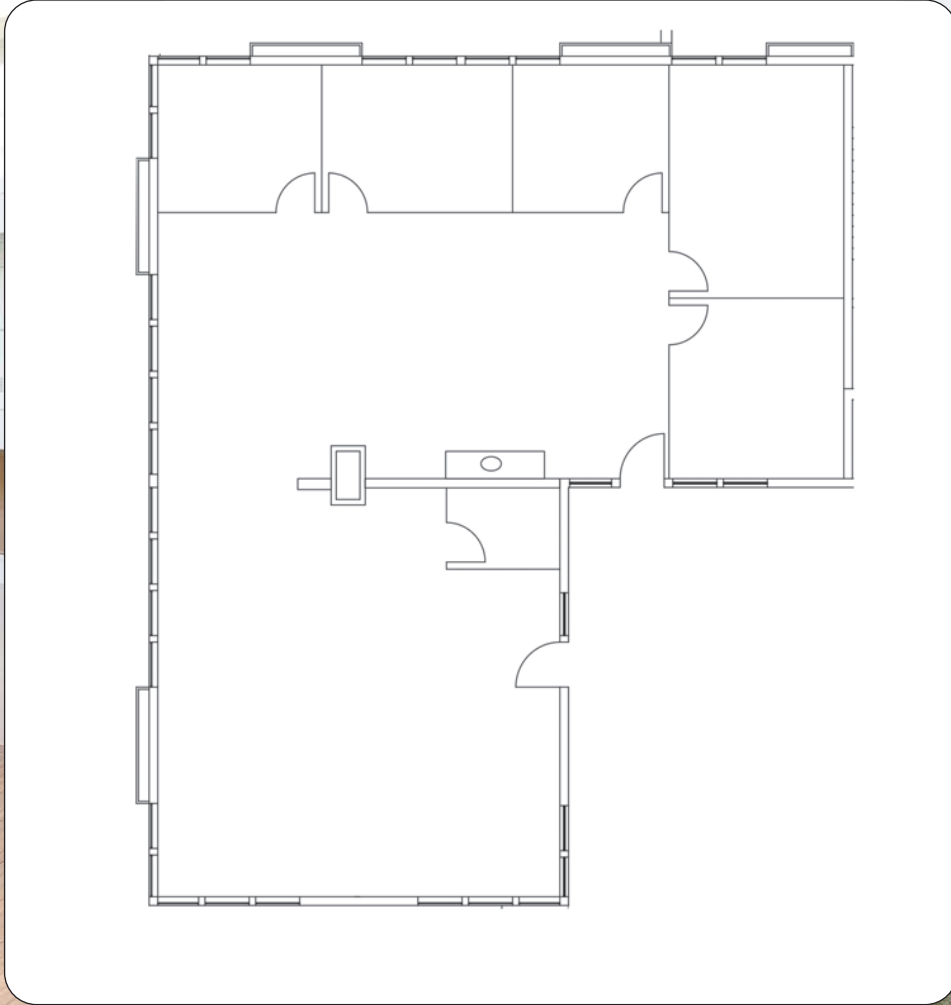
SUITE 138



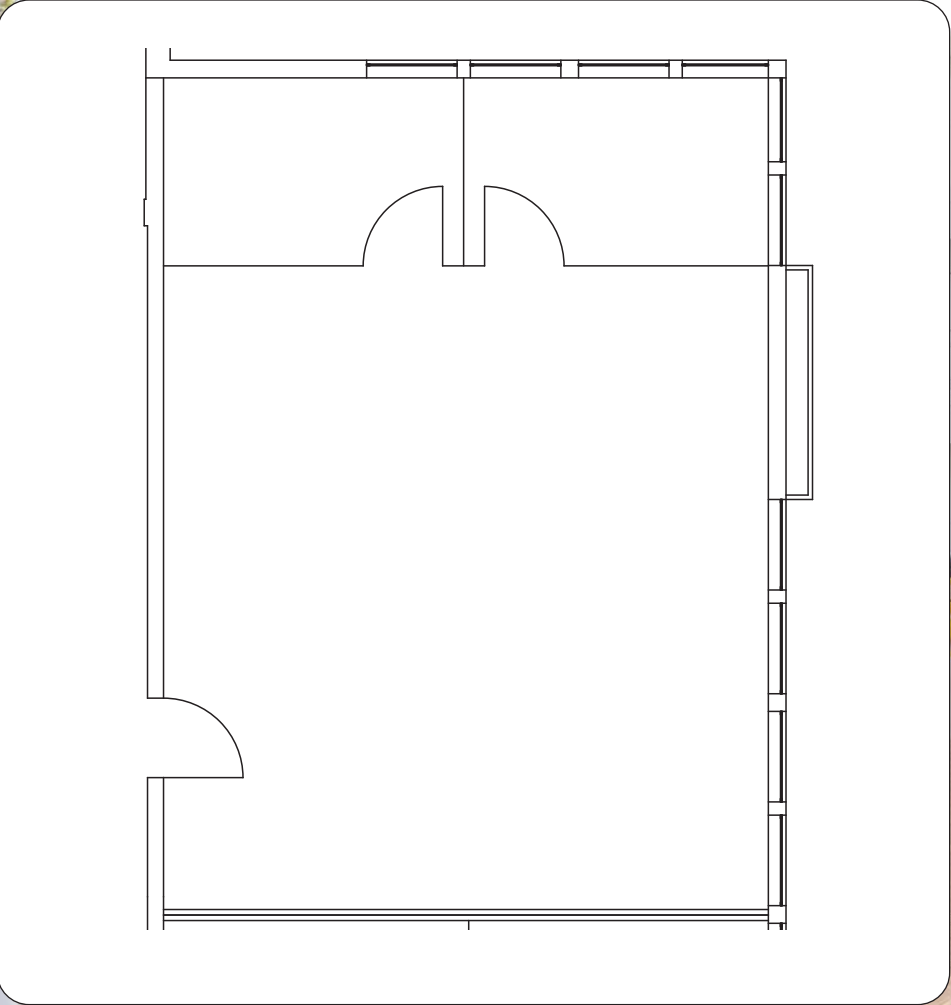
SUITE 150



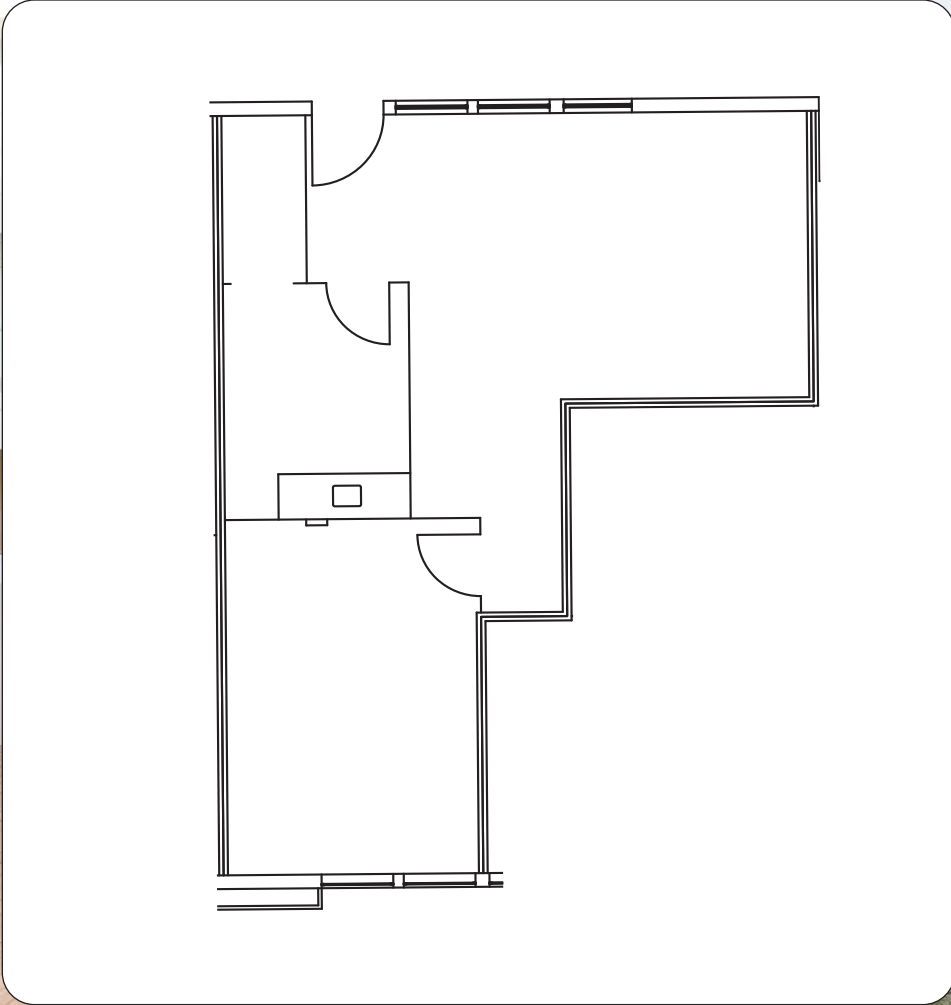
SUITE 185



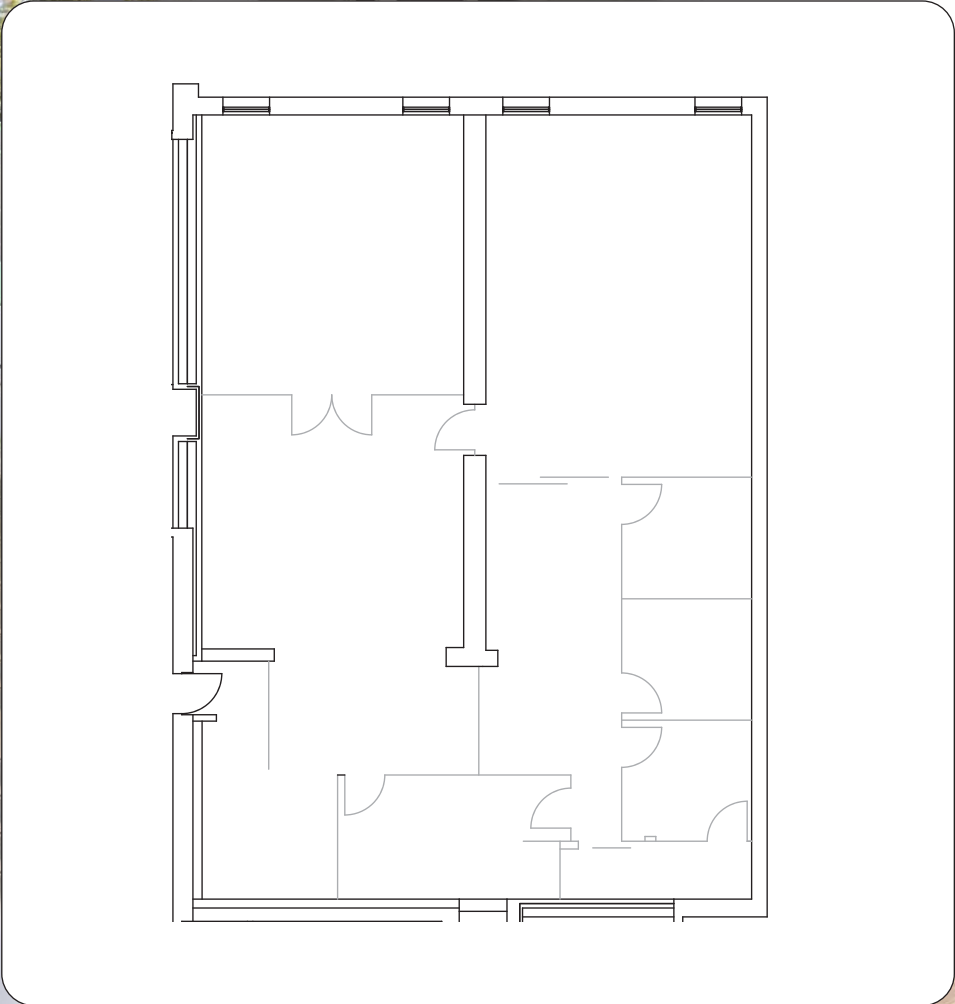
SUITE 207



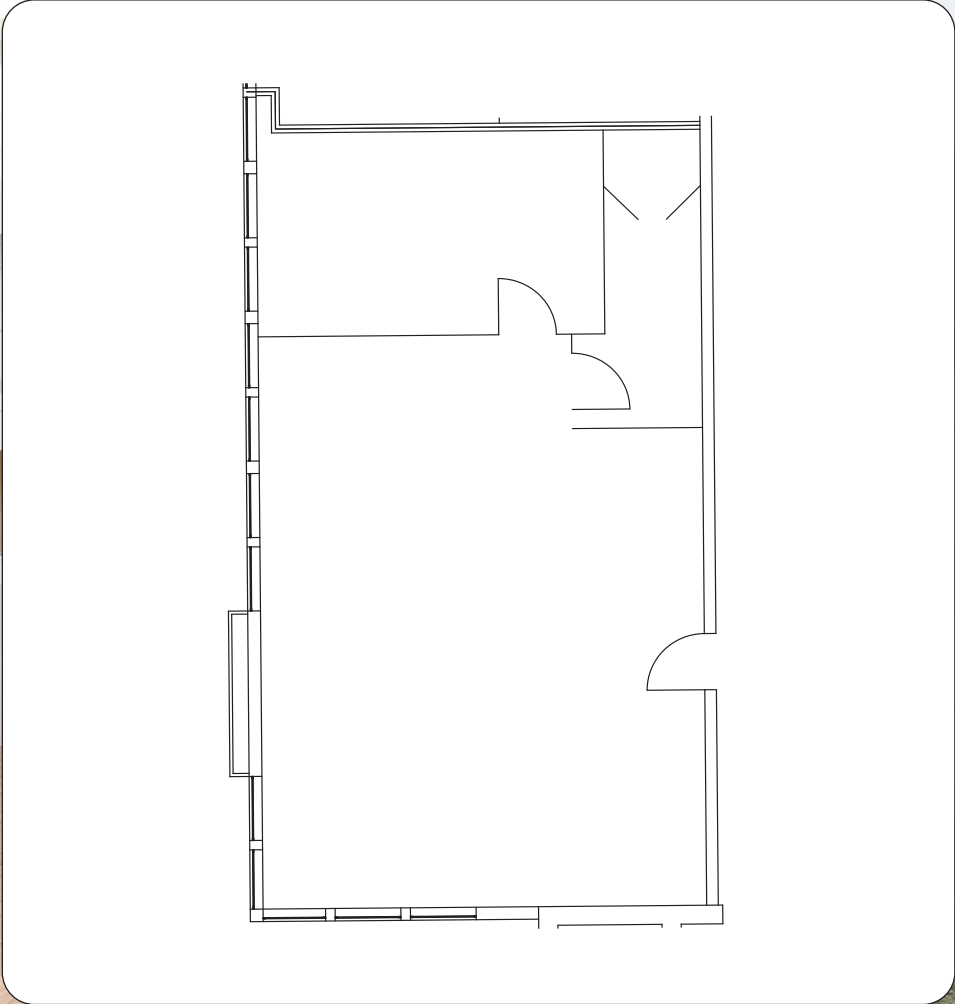
SUITE 221



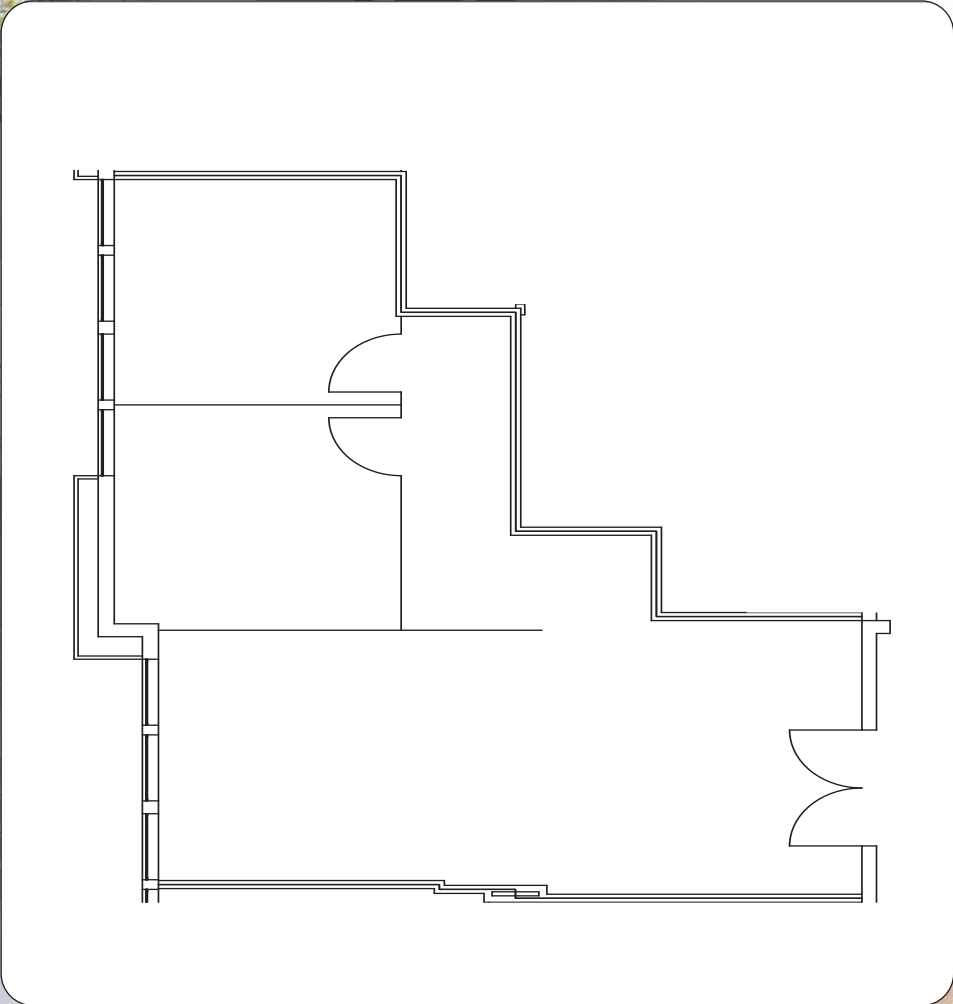
SUITE 242



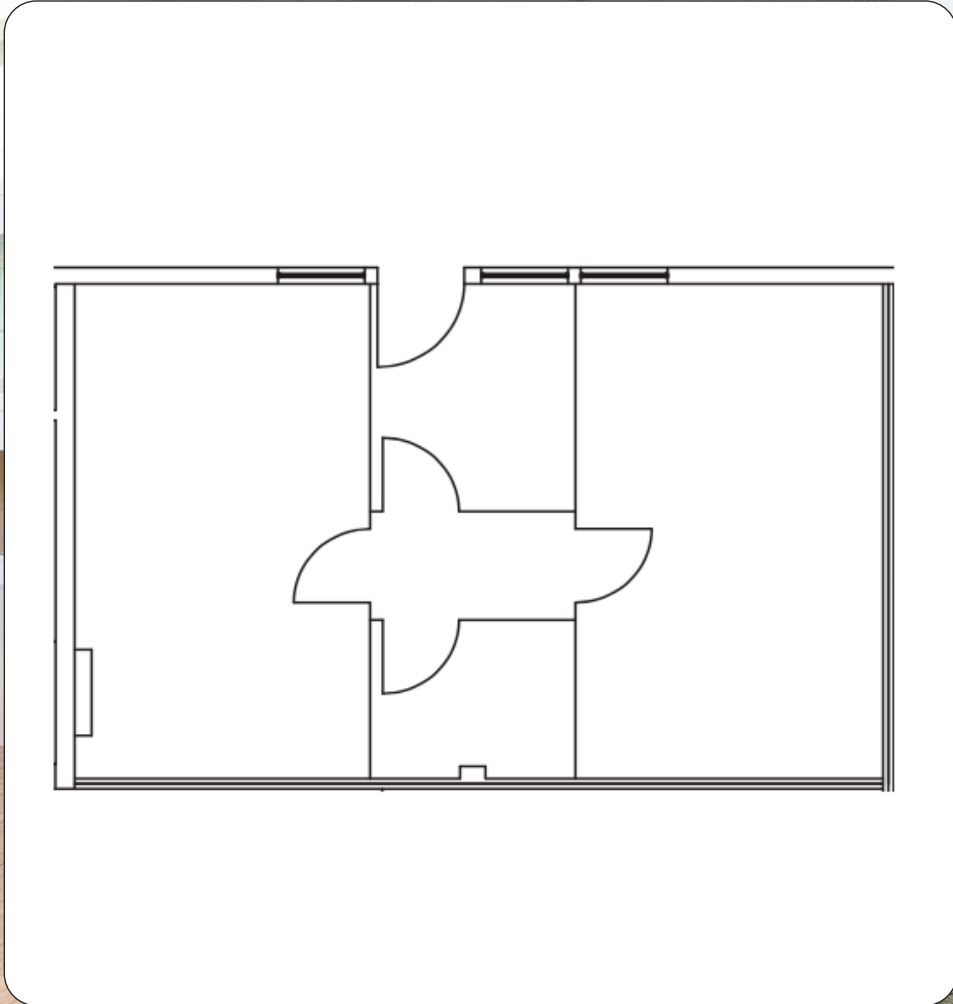
SUITE 245



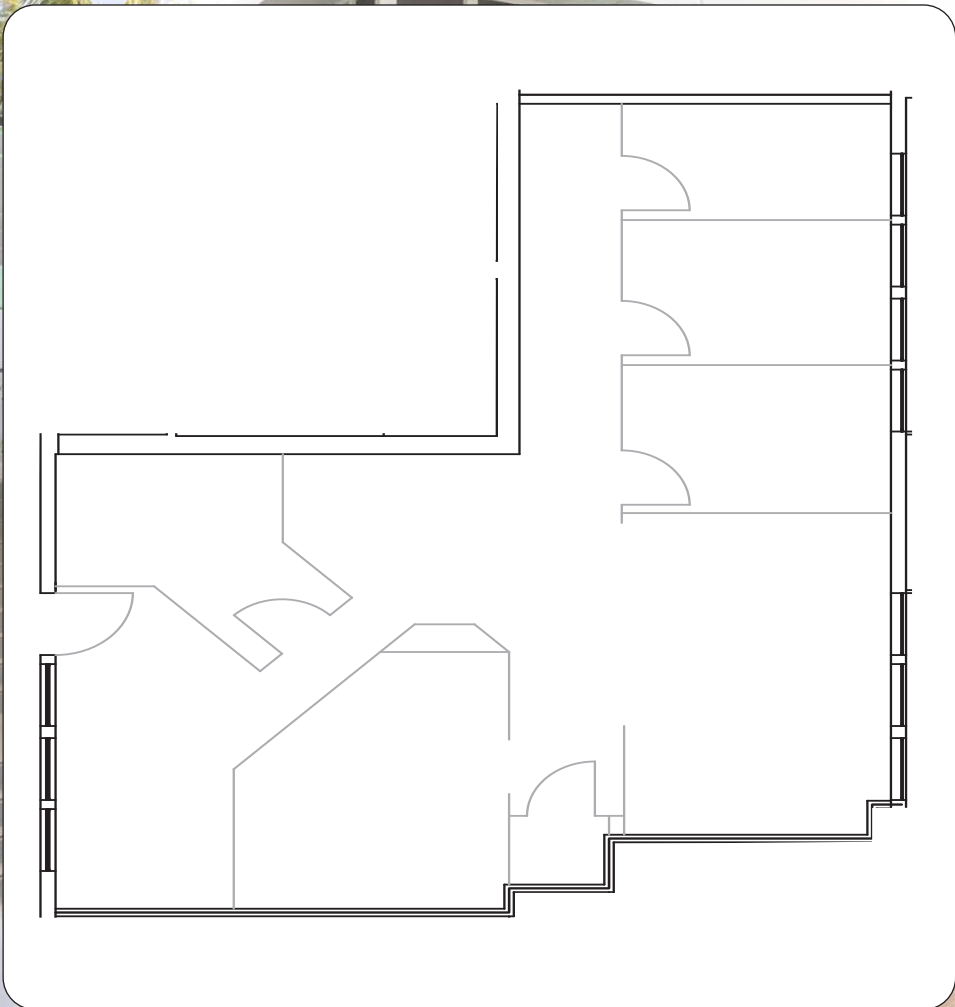
SUITE 305



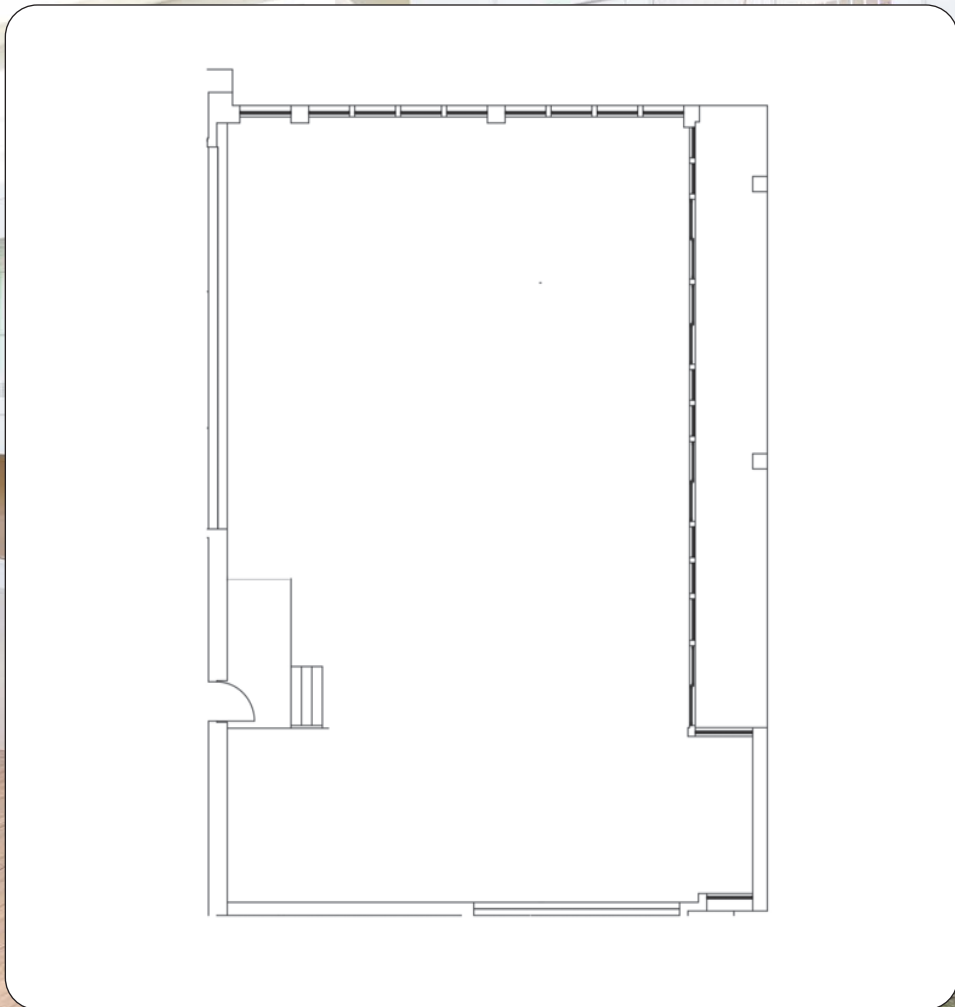
SUITE 320



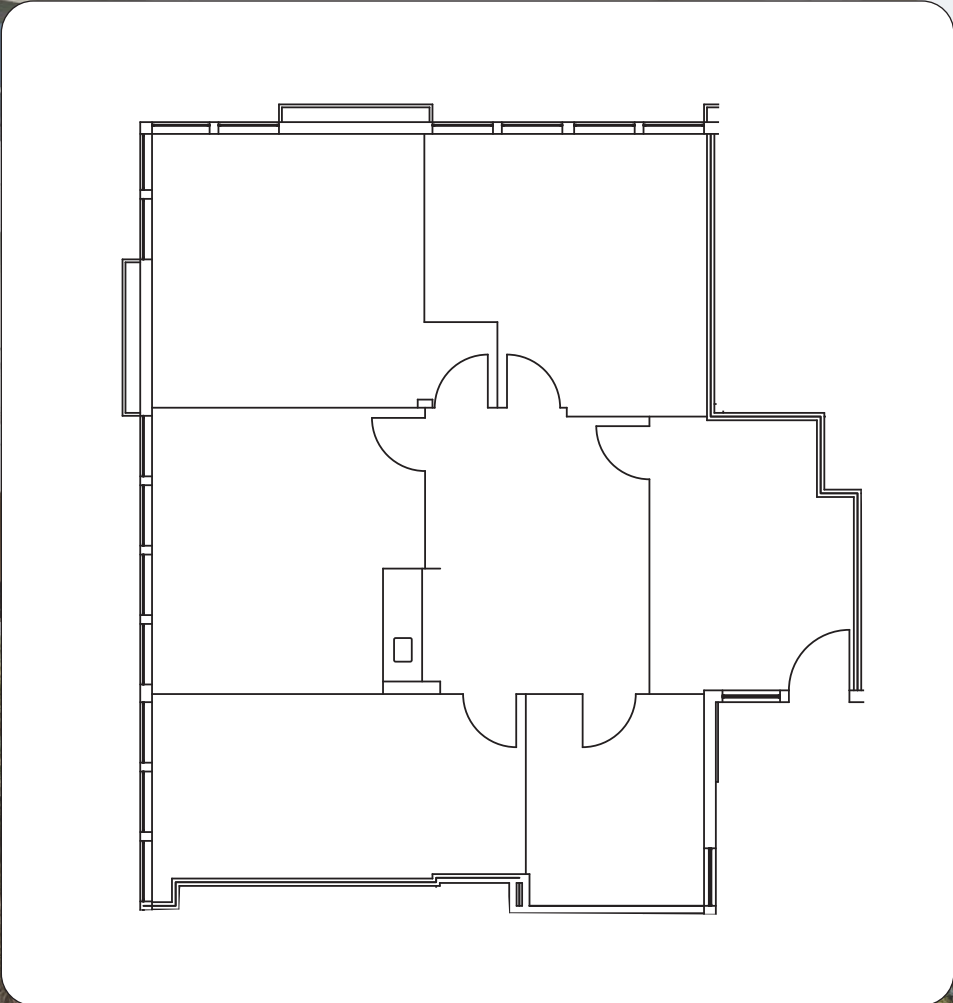
SUITE 340



SUITE 355



SUITE 381





11340 Olympic Blvd

KEITH FIELDING

PRINCIPAL

310.899.2719

kfielding@leewestla.com

AGT DRE 01729915

ALEKS TRIFUNOVIC, SIOR

PRESIDENT

310.899.2721

atrifunovic@leewestla.com

BRK DRE 01363109

TIBOR LODY, SIOR

PRINCIPAL

310.899.2720

tlody@leewestla.com

AGT DRE 01261129

THOMAS ISOLA

PRINCIPAL

310.899.2709

tisola@leewestla.com

AGT DRE 01974024

ADAM LEVINE

ASSOCIATE

310.899.2703

alevine@leewestla.com

AGT DRE 02104830



1508 17th Street, Santa Monica, CA 90404
www.leewestla.com | DRE 01222000

