

FOR LEASE

MARYLAND PARK PLACE



PROPERTY DETAILS

1155-1185 E. Twain Ave., Las Vegas, NV 89169

- **Vons Anchored Shopping Center**
- Space Available ±1,118–6,014 SF
- Ground Lease Opportunity
- Tenant Improvement Allowance Available for Qualified Deals and Tenants
- Over 49,500 Vehicles Per Day in Intersection
- Close proximity to UNLV, Harry Reid International Airport, and Las Vegas Strip
- Located in Highly Populated Residential Area
- Join Vons, Little Caesar's, Men's Warehouse, Taco Bell, La Michoacana, and More National/Regional Tenants

2025 DEMOS



EST. POPULATION

1 MILE » 29,936
 3 MILE » 182,819
 5 MILE » 485,993



EST. HOUSEHOLDS

1 MILE » 13,646
 3 MILE » 84,268
 5 MILE » 197,023



EST. AVERAGE HH INCOME

1 MILE » \$75,969
 3 MILE » \$79,624
 5 MILE » \$77,143

NEWMARK

MOUNTAIN WEST

JAKKE FARLEY, CCIM

jfarley@newmarkmw.com
 direct 702.340.0907
 BS.2802
[View Profile](#)

JAKE BABA

jbaba@newmarkmw.com
 direct 702.374.0217
 BS.146671
[View Profile](#)

**FULL SERVICE
 COMMERCIAL REAL ESTATE**

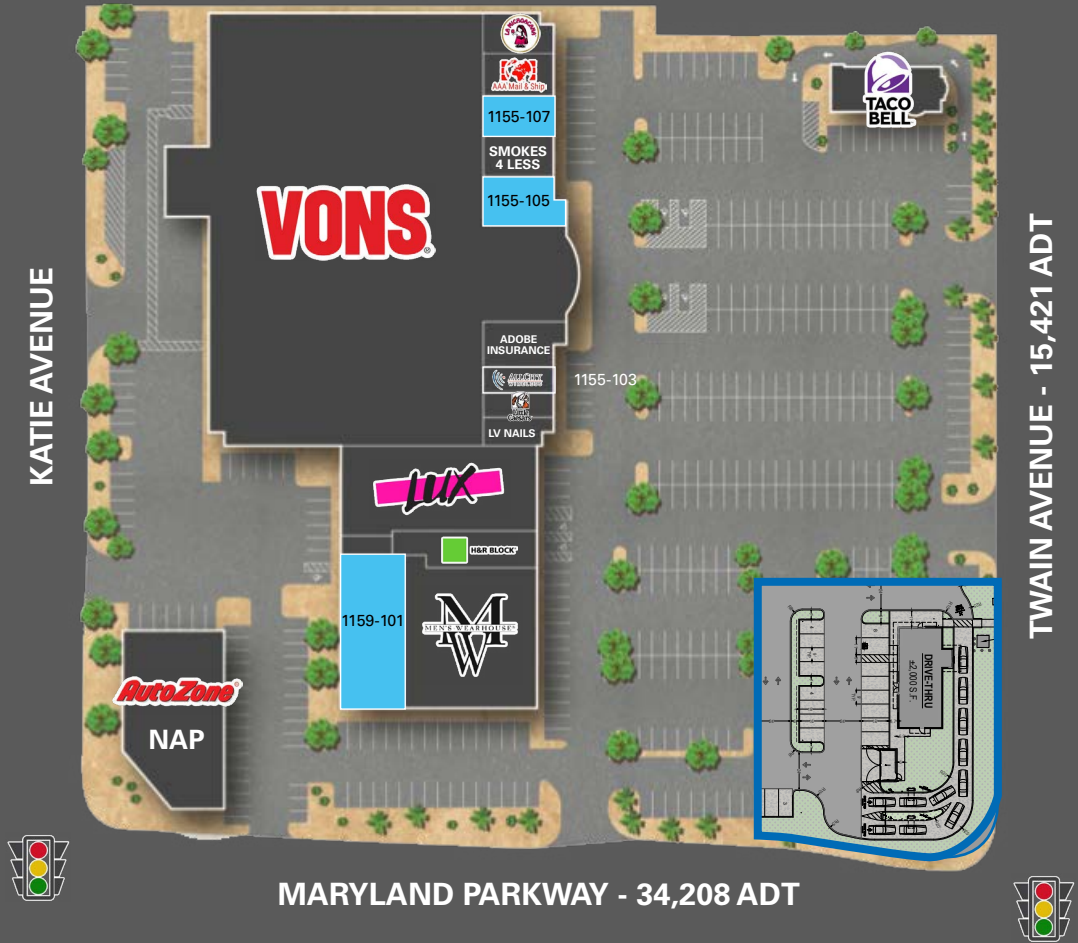
8488 Rozita Lee Ave, Ste 125
 Las Vegas, NV 89113
 Office 702.374.0211

www.newmarkmw.com



SUITE	TENANT	SF
1155-109	La Michoacana	1,526
1155-108	AAA Mail Box, LLC	1,106
1155-107	AVAILABLE	1,118
1155-106	Smoke 4 Less	1,000
1155-105	AVAILABLE	1,158
1155-104	Adobe Insurance	1,269
1155-103	All City Wireless	550
1155-102	Little Caesars	873
1155-101	LV Nails	780
1155	Von's	60,523
1159-101	AVAILABLE*	6,014
1159-104	Men's Wearhouse	7,499
1159-108	H&R Block	1,611
1159-109	Lux Beauty Supply	7,581
1185	Von's Fuel	0
1109	Taco Bell	2,200
AVAILABLE (GROUND LEASE)		

*Do not disturb current tenant



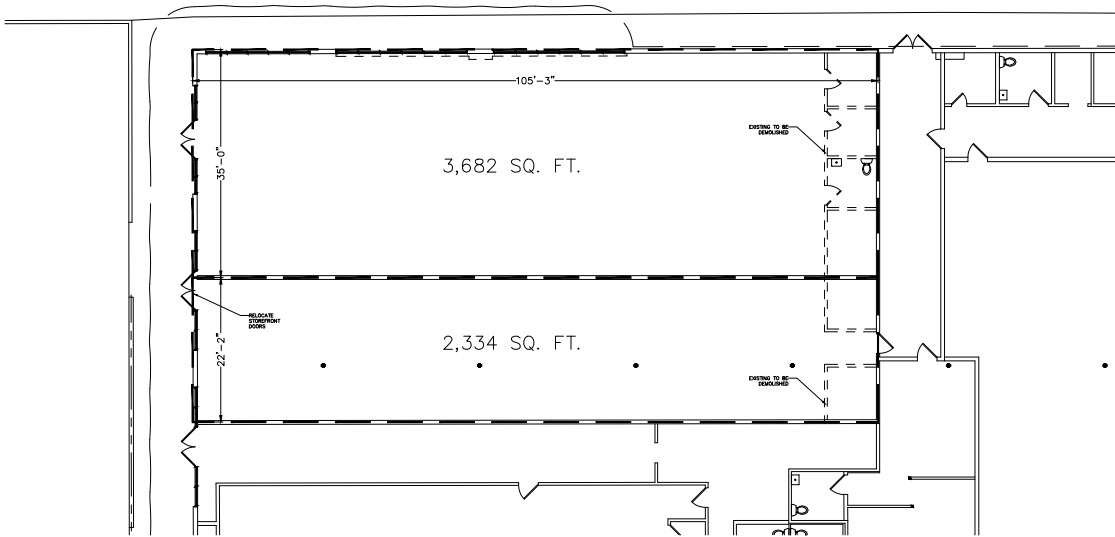
JAKKE FARLEY, ccim
 jfarley@newmarkmw.com
 direct 702.340.0907
 BS.2802
[View Profile](#)

JAKE BABA
 jbaba@newmarkmw.com
 direct 702.374.0217
 BS.146671
[View Profile](#)

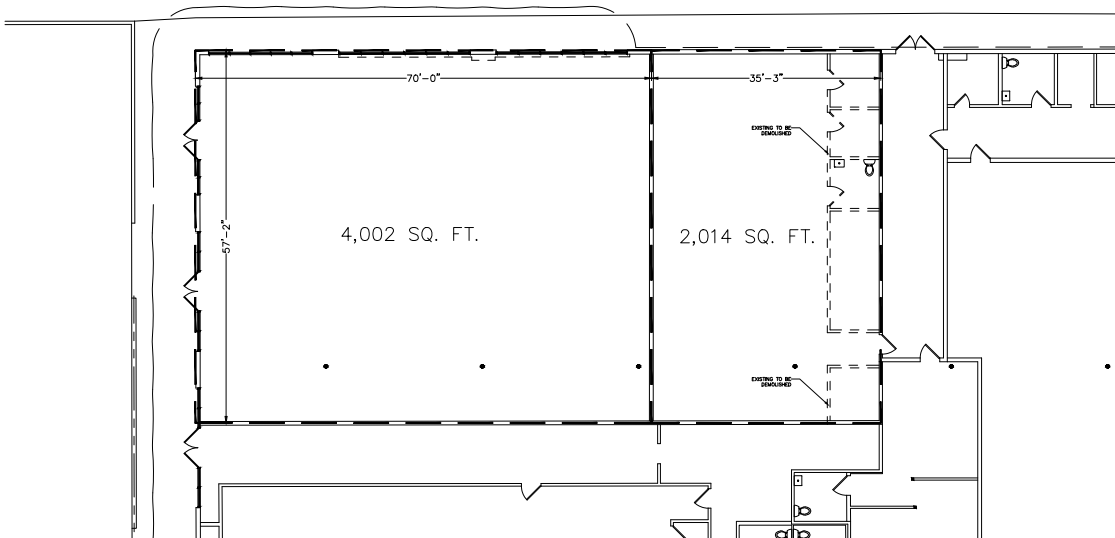
**FULL SERVICE
 COMMERCIAL REAL ESTATE**
 8488 Rozita Lee Ave, Ste 125
 Las Vegas, NV 89113
 Office 702.374.0211
www.newmarkmw.com

POSSIBLE DEMISING OPTIONS – SUITE 101

OPTION A



OPTION B



JAKKE FARLEY, CCIM
jfarley@newmarkmw.com
direct 702.340.0907
BS.2802
[View Profile](#)

JAKE BABA
jbaba@newmarkmw.com
direct 702.374.0217
BS.146671
[View Profile](#)

**FULL SERVICE
COMMERCIAL REAL ESTATE**
8488 Rozita Lee Ave, Ste 125
Las Vegas, NV 89113
Office 702.374.0211
www.newmarkmw.com



NEWMARK

 MOUNTAIN WEST

JAKKE FARLEY, CCIM
 jfarley@newmarkmw.com
 direct 702.340.0907
 BS.2802
[View Profile](#)

JAKE BABA
 jbaba@newmarkmw.com
 direct 702.374.0217
 BS.146671
[View Profile](#)

**FULL SERVICE
 COMMERCIAL REAL ESTATE**
 8488 Rozita Lee Ave, Ste 125
 Las Vegas, NV 89113
 Office 702.374.0211
www.newmarkmw.com

DISCOVER

FILIPINO TOWN LAS VEGAS



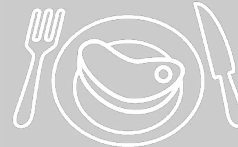
Maryland Park Place

saw 1.1M visits last year



Vons

had over 450,000 visits last year



Directly across from the #1 **Seafood City** in the valley out of four, with 1M visits last year



Across from the **Boulevard Mall**, which had over 5.5M visits last year

An application has been submitted to Clark County to create **FILIPINO TOWN LAS VEGAS**, a formal cultural corridor along Maryland Parkway from Desert Inn Road to Flamingo Road. If approved by the Paradise Town Board, Filipino Town would become the second cultural district in the Las Vegas area, following Little Ethiopia, which was approved in June 2023. The team behind Filipino Town is planning on bringing in more Filipino-owned businesses, as well as developing cultural institutions like a museum of Filipino history, library of Filipino works and a Filipino language school.



RETAILERS





JAKKE FARLEY, cCim
 jfarley@newmarkmw.com
 direct 702.340.0907
 BS.2802
[View Profile](#)

JAKE BABA
 jbaba@newmarkmw.com
 direct 702.374.0217
 BS.146671
[View Profile](#)

**FULL SERVICE
 COMMERCIAL REAL ESTATE**
 8488 Rozita Lee Ave, Ste 125
 Las Vegas, NV 89113
 Office 702.374.0211
www.newmarkmw.com