

CAMPING WORLD SUBLEASE

1500 South Hilton Drive • St. George, Utah 84790



HIGHLIGHTS

- 3 ACRES FOR SUBLEASE
- INCLUDES LEASE OF 17,301 SF BUILDING
- FREEWAY VISIBILITY WITH 2 PYLON SIGNS
- CONTACT AGENT FOR DETAILS

JEANENE MAXSON

702.343.0904 | jeanene@dunbarcommercial.com
LICENSE# BS.0146680.LLC

TANNER OLSON

801.930.6752 | tolson@legendllp.com

JOE MILLS

801.930.6755 | jmills@legendllp.com



801.930.6750 | www.legendllp.com
2180 S 1300 E, Suite 240 | Salt Lake City, UT 84106

© Legend Partners, LLP. All rights reserved. All information contained herein is from sources deemed reliable; however, no representation or warranty is made to the accuracy thereof.

ST GEORGE, UT



DEMOGRAPHICS

	1 MILE	3 MILE	5 MILE
2023 EST. POPULATION	5,204	57,409	113,970
2028 PROJECTED POPULATION	5,515	62,252	125,789
2023 EST. DAYTIME POPULATION	5,965	33,647	45,668
2023 EST. AVG HH INCOME	\$87,046	\$101,785	\$106,636
2023 EST. HOUSEHOLDS	1,986	20,513	39,888
2023 EST. BUSINESSES	629	3,992	5,811

TRAFFIC

I-15
64,103 VEHICLES PER DAY

HILTON DR
2,900 VEHICLES PER DAY

JEANENE MAXSON

702.343.0904 | jeanene@dunbarcommercial.com
LICENSE# BS.0146680.LLC

TANNER OLSON

801.930.6752 | tolson@legendllp.com

JOE MILLS

801.930.6755 | jmills@legendllp.com

PARTNER **XTEAM**
RETAIL ADVISORS

LEGEND
PARTNERS ■■■■

801.930.6750 | www.legendllp.com
2180 S 1300 E, Suite 240 | Salt Lake City, UT 84106

SALT LAKE CITY, UT

 LOCATION



JEANENE MAXSON

702.343.0904 | jeanene@dunbarcommercial.com
LICENSE# BS.0146680.LLC

TANNER OLSON

801.930.6752 | tolson@legendllp.com

JOE MILLS

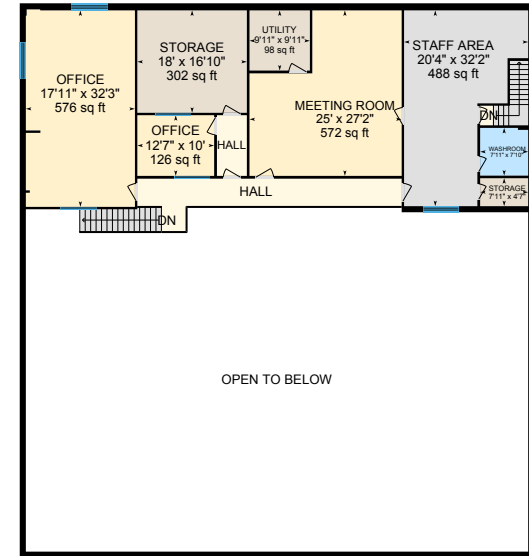
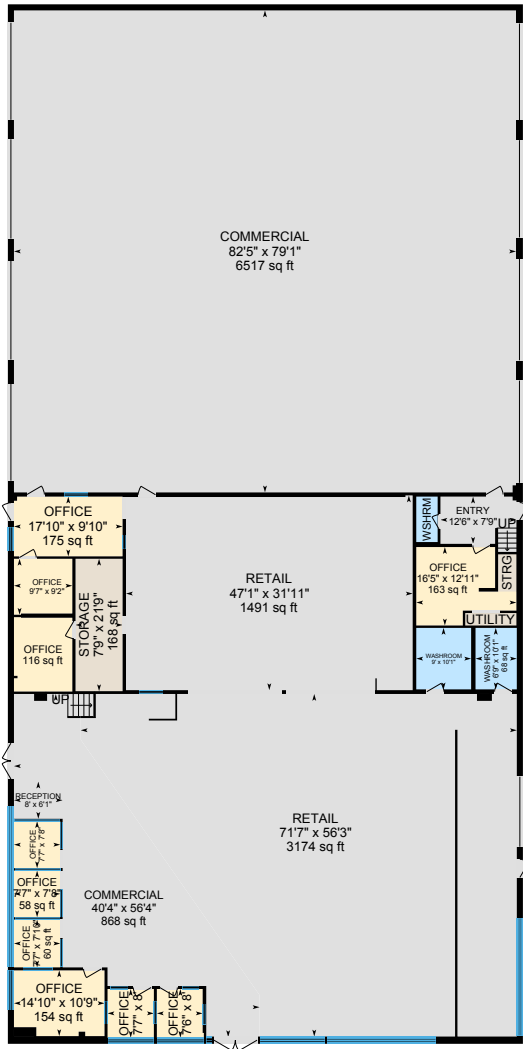
801.930.6755 | jmills@legendllp.com

PARTNER XTEAM
RETAIL ADVISORS

LEGEND
PARTNERS

801.930.6750 | www.legendllp.com
2180 S 1300 E, Suite 240 | Salt Lake City, UT 84106

© Legend Partners, LLP. All rights reserved. All information contained herein is from sources deemed reliable; however, no representation or warranty is made to the accuracy thereof.



JEANENE MAXSON

702.343.0904 | jeanene@dunbarcommercial.com

LICENSE# BS.0146680.LLC

TANNER OLSON

801.930.6752 | toolson@legendllp.com

JOE MILLS

801.930.6755 | jmills@legendllp.com

PARTNER XTEAM
RETAIL ADVISORS

LEGEND
PARTNERS

801.930.6750 | www.legendllp.com
2180 S 1300 E, Suite 240 | Salt Lake City, UT 84106