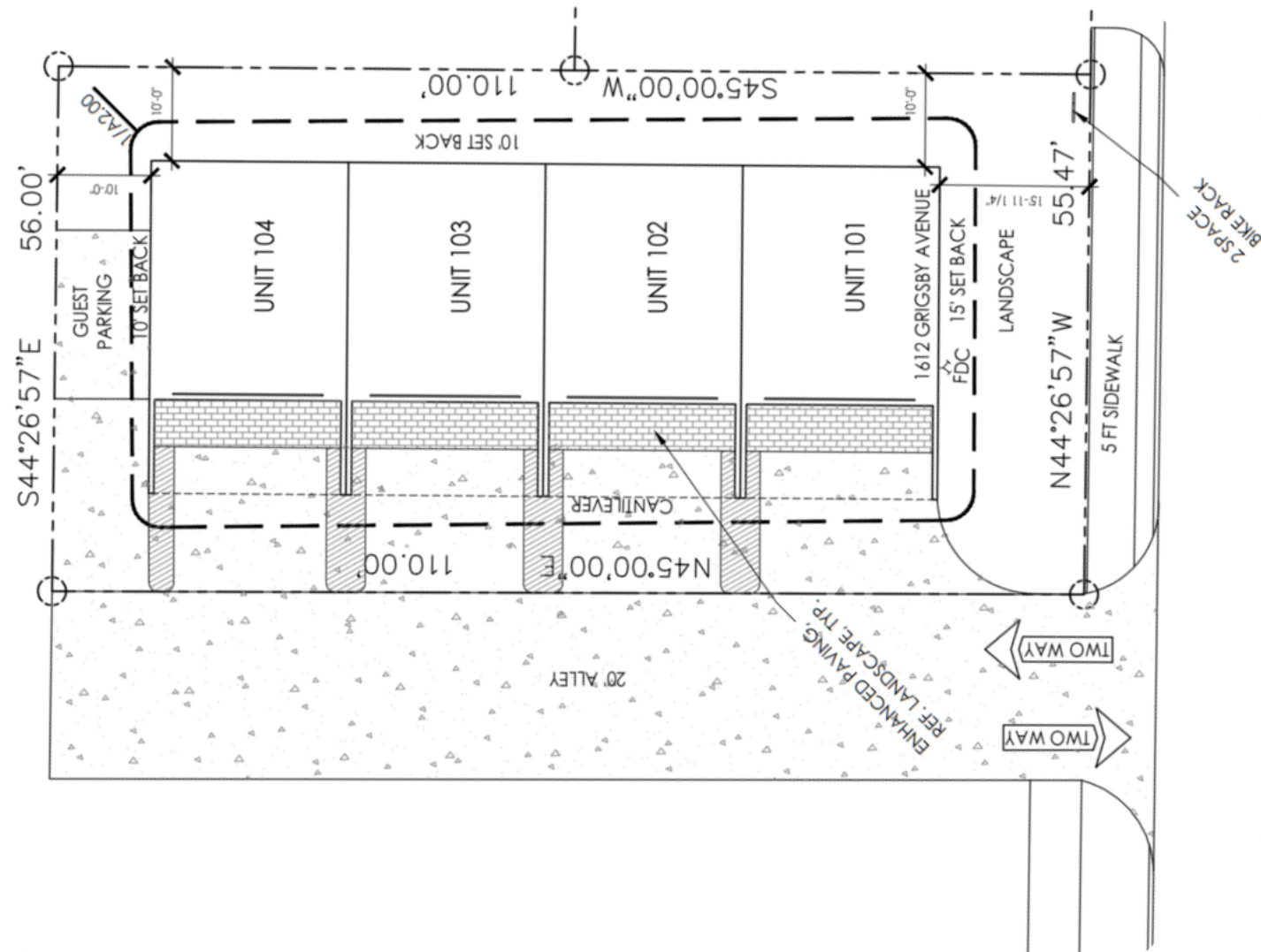


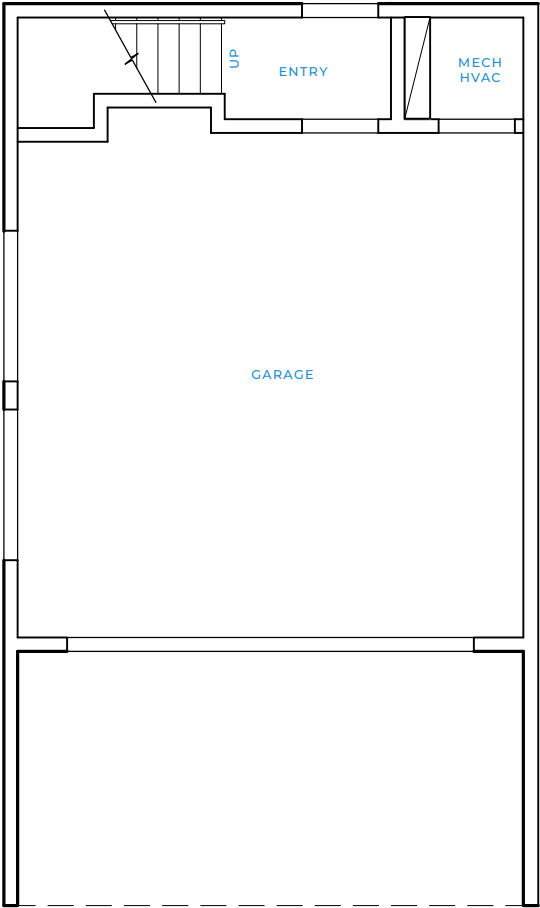
1612 Grigsby Avenue | Dallas

4 UNITS | 4 STORIES | GUEST PARKING | 11,256 SQFT

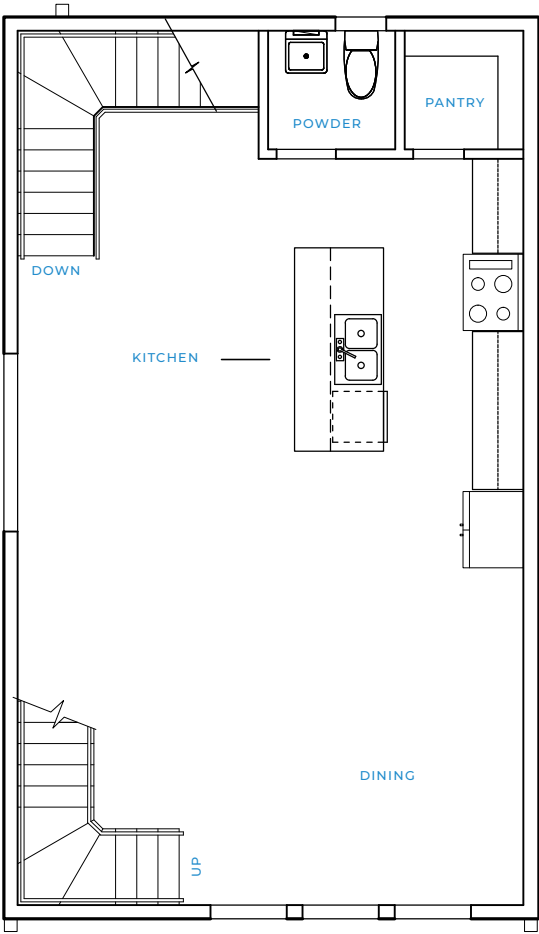


1612 Grigsby Avenue | Dallas

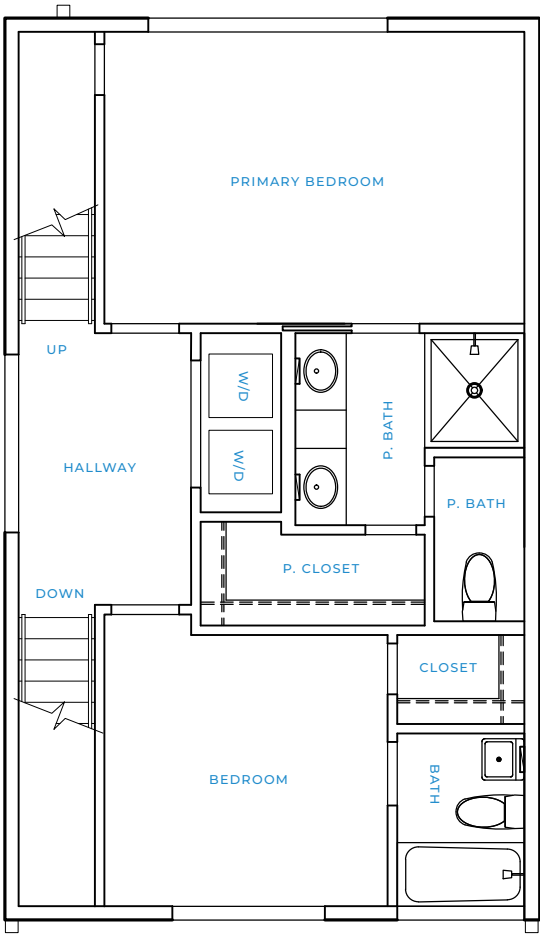
2 BEDROOMS | 2.2 BATHROOMS | 2 CAR GARAGE | 1,998 SQFT



GROUND FLOOR



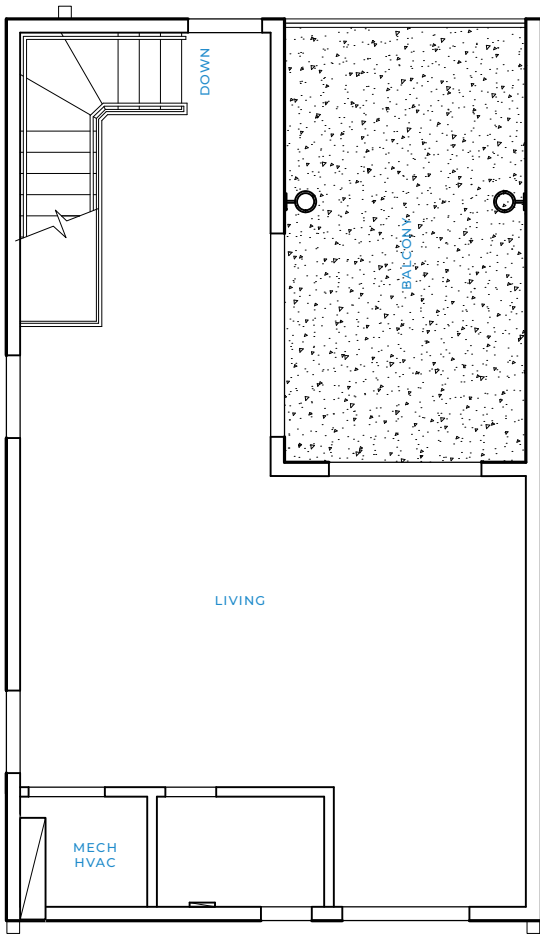
SECOND FLOOR



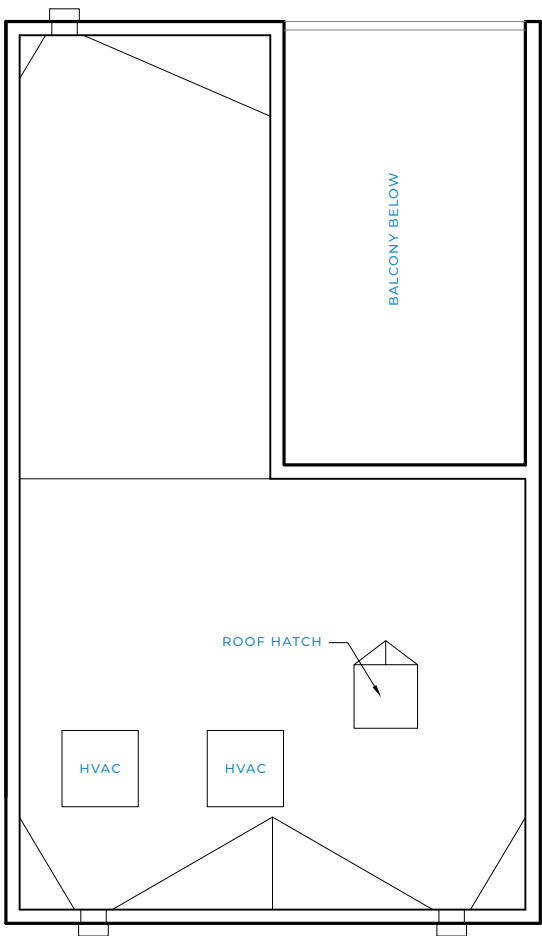
THIRD FLOOR

1612 Grigsby Avenue | Dallas

2 BEDROOMS | 2.2 BATHROOMS | UNIT AREA - 1,998 SQFT



FOURTH FLOOR



ROOF

EAST HEIGHTS CONDOMINIUMS

1612 Grigsby Avenue | Dallas

EXTERIOR

- RING® DOORBELL WITH REMOTE MONITORING CAPABILITY
- KWIKSET® "SAN CLEMENTE" ENTRY DOOR HARDWARE, MATTE BLACK
- IMPACT RESISTANT ARCHITECTURAL METAL PANEL WITH LIFETIME WARRANTY AGAINST FAILURE AND COLOR FADE
- GARAGE DOOR OPENER WITH MYQ TECHNOLOGY
- LOW MAINTENANCE, DECOMPOSED GRANITE ROCK HARDSCAPE
- MULTIPLE-GATED ENTRY WITH SECURE KEYCODE
- ROOFTOP/TERRACE ACCESS WITH DOWNTOWN VIEWS

INTERIOR

- PREMIUM 6" BASEBOARDS
- SHERWIN-WILLIAMS® PAINT, SNOWBOUND, SATIN FINISH
- STAINED CONCRETE ON 1ST FLOOR
- ¾ INCH WHITE OAK HARDWOOD FLOORS STAINED IN WHITE OAK ON 2ND, 3RD AND 4TH FLOORS
- IN-FLOOR WOOD REGISTERS, STAINED IN WHITE OAK
- RECESSED FLOOR PLUGS IN LIVING AREAS
- MODERN, RECESSED LIGHTING FIXTURES
- KWIKSET® "PISMO", SQUARE ROSE DOOR HARDWARE, MATTE BLACK
- TWO, GOODMAN GSZH5 HIGH-EFFICIENCY WITH SPLIT SYSTEM HEAT PUMP UNITS
- RHEEM® TANKLESS WATER HEATER
- SPACIOUS COAT CLOSET AND UNDER-THE-STAIR STORAGE
- ROOMS PRE-WIRED FOR CEILING FANS
- IN-UNIT FIRE SPRINKLERS
- PREMIUM IRON RAILING
- 200AMP ELECTRICAL PANELS IN EACH UNIT
- ELEVATE® DOUBLE-PANED, LOW E WINDOWS
- PRE-WIRED FOR ATT FIBER WITH SMART PANEL IN PRIMARY CLOSET

PRIMARY SUITE

- MISENO® "MIA" WIDESPREAD FAUCET, BRUSHED NICKEL
- MISENO® "MIA" PRESSURE BALANCED SHOWER SYSTEM WITH RAIN HEAD AND HANDHELD, BRUSHED NICKEL
- FRAMELESS, 3/8IN CLEAR GLASS SHOWER DOOR
- BUILT-IN SHOWER NICHE
- KOEHLER® "HIGHLINE" ELONGATED TOILET WITH SOFT CLOSE SEAT
- 12"X 24" CASTILLE LEVANTE CERAMIC TILE, WHITE MARBLE
- POCKET DOORS TO BATHROOM SUITE
- PRIVATE WATER CLOSET WITH EXHAUST FAN
- CUSTOM CLOSET SYSTEM
- EXHAUST FANS, VENTED TO THE EXTERIOR

SECONDARY BATHROOM

- MISENO® "MIA" WIDESPREAD FAUCET, BRUSHED NICKEL
- MISENO® "MIA" SINGLE HANDLE TUB SYSTEM, BRUSHED NICKEL
- 60" SOAKING TUB
- KOEHLER® HIGHLINE ELONGATED TOILET WITH SOFT CLOSE SEAT
- 12"X 24" CASTILLE LEVANTE CERAMIC TILE, WHITE MARBLE
- EXHAUST FAN, VENTED TO THE EXTERIOR
- SUBWAY TILED BATH/SHOWER SURROUND, TILED TO THE CEILING

POWDER BATH

- MISENO "MIA" WIDESPREAD FAUCET, BRUSHED NICKEL
- EXHAUST FAN, VENTED TO THE EXTERIOR

KITCHEN

- BRUSHED NICKEL CABINET HARDWARE
- SINGLE BASIN, UNDERMOUNT SINK
- KRAUS® "BOLDEN SINGLE HANDLE PULL-DOWN FAUCET, BRUSHED NICKEL

- FRIGIDAIRE® PROFESSIONAL 30" FRONT CONTROL GAS RANGE WITH AIR FRYER, STAINLESS STEEL, 5 BURNER
- FRIGIDAIRE® 30" CANOPY PROFESSIONAL 24" BUILT-IN DISHWASHER WITH EVENDRY SYSTEM, STAINLESS STEEL
- FRIGIDAIRE® PROFESSIONAL 24" BUILT-IN, SMUDGE-PROOF MICROWAVE, STAINLESS STEEL
- EASY ACCESS AIR SWITCH FOR DISPOSAL
- ¾ HP INSINKERATOR® DISPOSAL
- 3MM CAESARSTONE® QUARTZ, ARTIC WHITE
- UNDERMOUNT CABINET LIGHTS
- SOFT CLOSE CABINETS AND DRAWERS
- WATERLINE FOR THE REFRIGERATOR
- WALK-IN PANTRY
- CANVAS BRAND CERAMIC SUBWAY TILE BACKSPLASH MERINGUE GLOSSY

LAUNDRY

- 12X24 TILE, CONCRETE GREY, MATTE FINISH
- ELECTRIC WASHER AND DRYER HOOK-UP

GAMEROOM

- CAESERSTONE® ABSOLUTE BLACK BARTOP, HAMMERED AND HONED
- OVEN® BAR FAUCET WITH PULL-DOWN SPRAYER, BRUSHED NICKEL
- PRE-WIRED FOR TV/CABLE
- ELEVATE® SLIDER FOR EASY OUTSIDE ACCESS

BALCONY DECK

- PLASTIC COMPOSITE DECKING
- STEEL RAILING
- GAS STUB
- COOL DECK, HEAT REFLECTIVE LIGHTWEIGHT CONCRETE DECK