

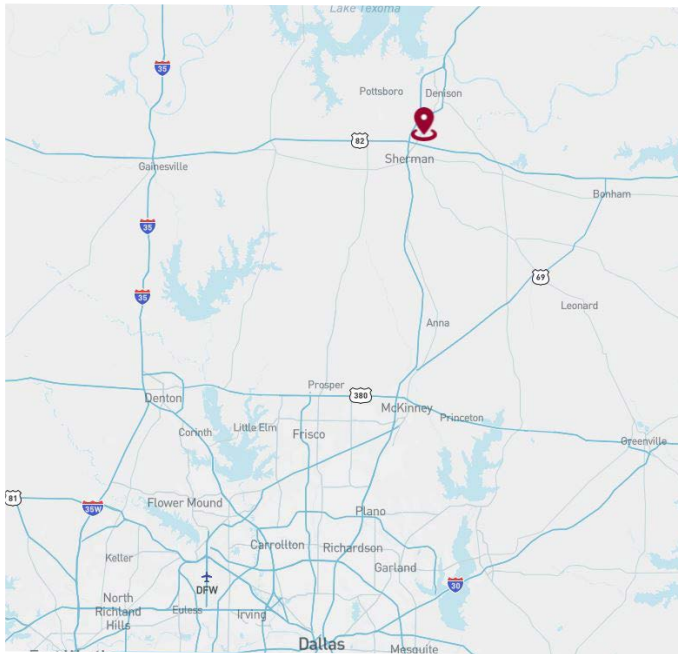
FOR LEASE

±1,331 SF



5621 TEXOMA PARKWAY

Sherman, TX 75090



AVAILABILITY HIGHLIGHTS

- ± 1,331 Available Square Feet
- Ample Parking
- 100% HVAC
- Ideal for Office or Retail Use
- Future Monument Signage Available
- Available within 30 days

ECONOMIC DATA

Contact Broker for Lease Rate; \$3.20 OPEX

FOR LEASING INFORMATION:

Phil Rosenfeld
Principal

prosenfeld@lee-associates.com
469.222.4159

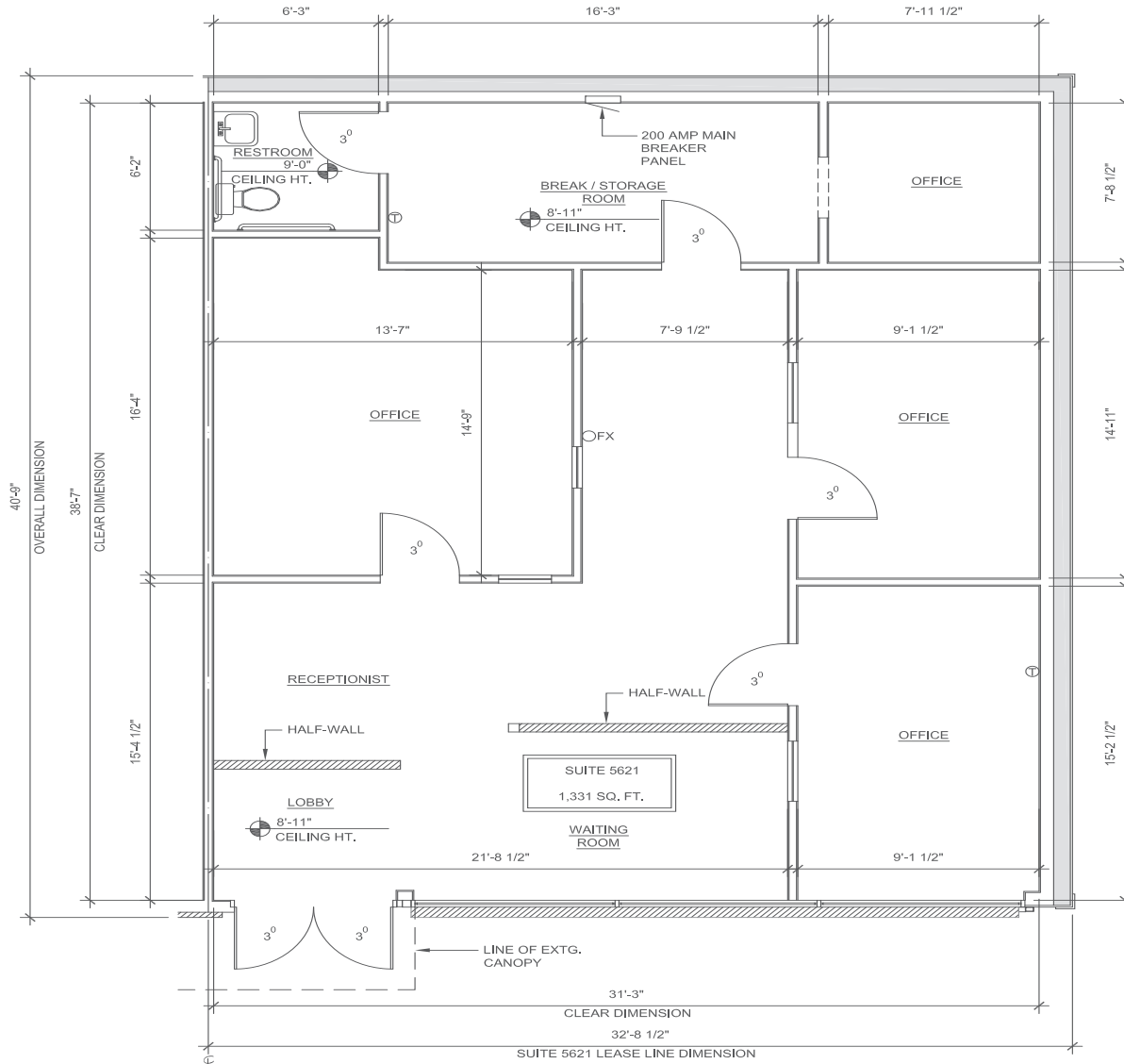


leedallas.com

±1,331 SF

FOR LEASE

SITE PLAN



SUITE 5621 - LEASING PLAN
109-01-01 Suite 5621 Leasing Plan 01-01

All information furnished regarding property for sale, rental or financing is from sources deemed reliable, but no warranty or representation is made to the accuracy thereof and same is submitted to errors, omissions, change of price, rental or other conditions prior to sale, lease or financing or withdrawal without notice. No liability of any kind is to be imposed on the broker herein.

FOR LEASING INFORMATION:

Phil Rosenfeld
Principal
prosenfeld@lee-associates.com
469.222.4159