

CIVIC CENTER PLAZA

OFFICE SPACE FOR LEASE

546 SF – 1,189 SF of Office Space Available



30011 IVY GLENN, LAGUNA NIGUEL

Angela Draper
Leasing Manager
949.798.8100
adraper@essexrealty.com
Lic. 01972882

ESSEX || REALTY
MANAGEMENT, INC.

www.EssexRealty.com

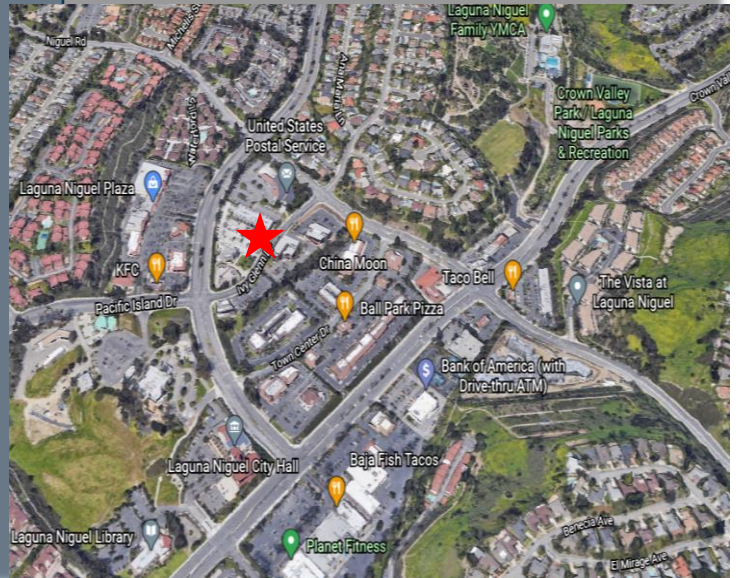


Features:

- Office suites from 500 sf to 1200 sf
- Common areas have been newly renovated
- Office Building is professionally managed
- Suites contain new paint and carpet and are move in ready.
- Adjacent to the Laguna Niguel Post Office
- Centrally Located in Laguna Niguel
- 4 miles from the 73 Tollroad at La Paz Road entrance.
- Adjacent to the Laguna Niguel Post Office
- Close to shopping, restaurants, public transportation, and Dana Point Harbor.
- Within walking distance to Starbucks, 3 cleaners, 2 grocery stores eateries.

Availabilities:

Suite	Size
112	1,189 SF
205	1,047 SF
202A	590 SF



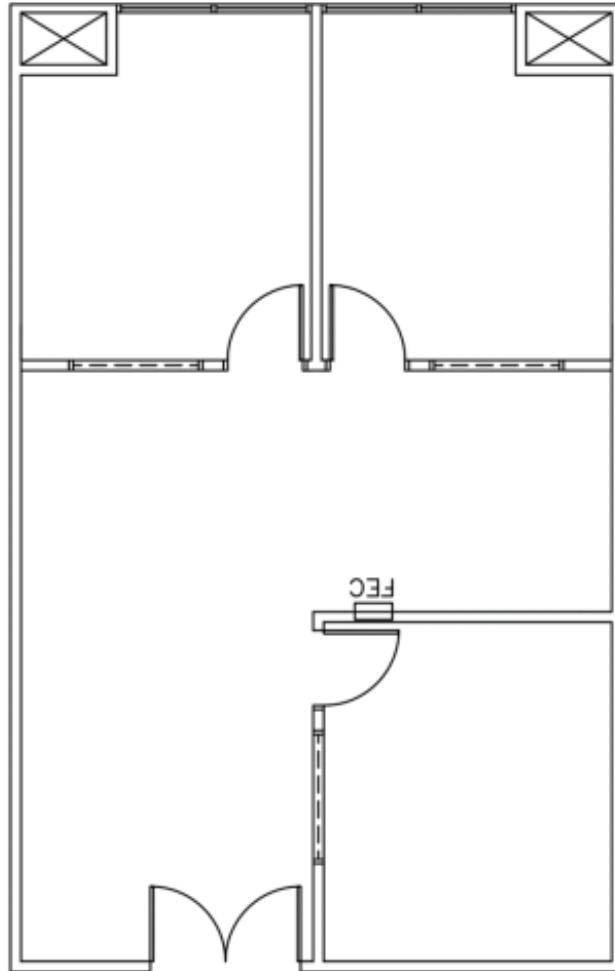
Angela Draper
Leasing Manager
 949.798.8100
 adraper@essexrealty.com
 Lic. 01972882

ESSEX || REALTY
 MANAGEMENT, INC.
www.EssexRealty.com

CIVIC CENTER PLAZA

Suite 112

1,189 SF



30011 IVY GLENN, LAGUNA NIGUEL

Angela Draper
Leasing Manager
949.798.8100
adraper@essexrealty.com
Lic. 01972882

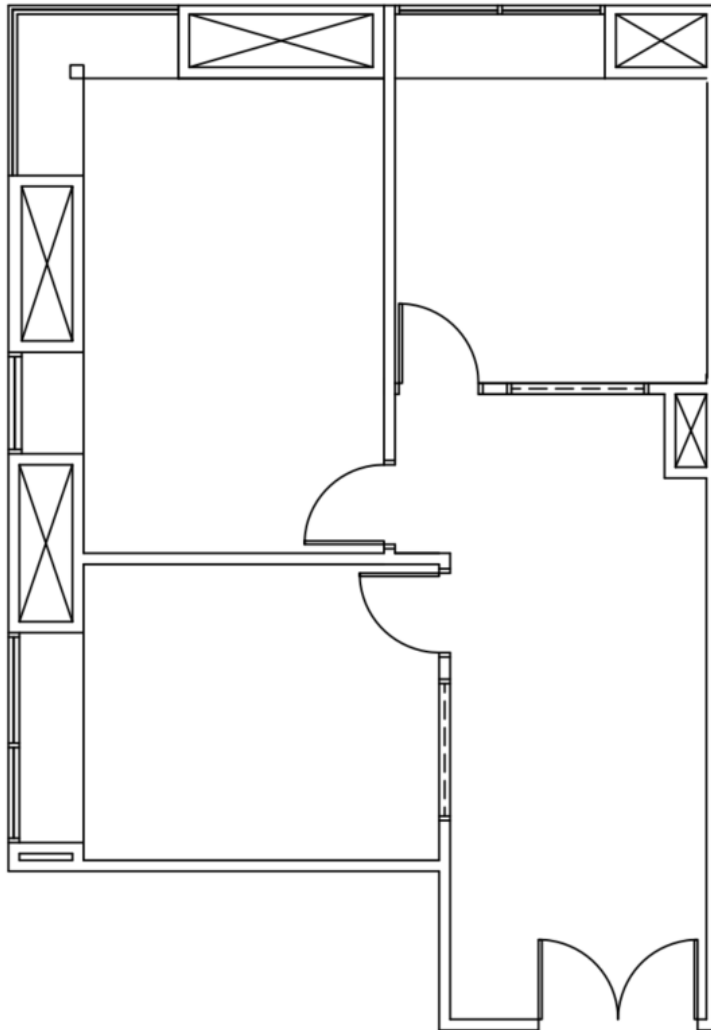
ESSEX || REALTY
MANAGEMENT, INC.

www.EssexRealty.com

CIVIC CENTER PLAZA

Suite 205

1,047 SF



30011 IVY GLENN, LAGUNA NIGUEL

Angela Draper
Leasing Manager
949.798.8100
adraper@essexrealty.com
Lic. 01972882

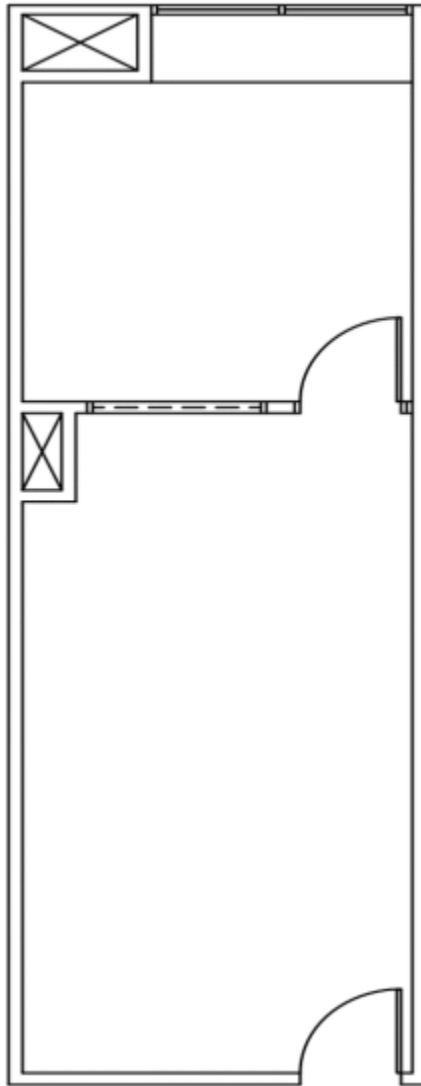
ESSEX || REALTY
MANAGEMENT, INC.

www.EssexRealty.com

CIVIC CENTER PLAZA

Suite 202A

590 SF



30011 IVY GLENN, LAGUNA NIGUEL

Angela Draper
Leasing Manager
949.798.8100
adraper@essexrealty.com
Lic. 01972882

ESSEX || REALTY
MANAGEMENT, INC.
www.EssexRealty.com