

2135

BUTANO DRIVE
SACRAMENTO, CA

OFFICE SPACE FOR LEASE



JACK BLACKMON

Director
916.569.2372
jack.blackmon@nrmk.com
CA RE License #01999561

MATTHEW ALEMANIA

Associate Director
916.569.2363
matthew.alemania@nrmk.com
CA RE License #01958591

JODIE ROBINSON

Associate
916.569.2318
jodie.robinson@nrmk.com
CA RE License #02214357

NEWMARK

PROPERTY HIGHLIGHTS



±7,000 - ±14,000 SF of ground floor space available



Covered parking



Interior loaded via security card access



Highly improved/ Class A common areas



Improved lobby and restroom core



Monument signage



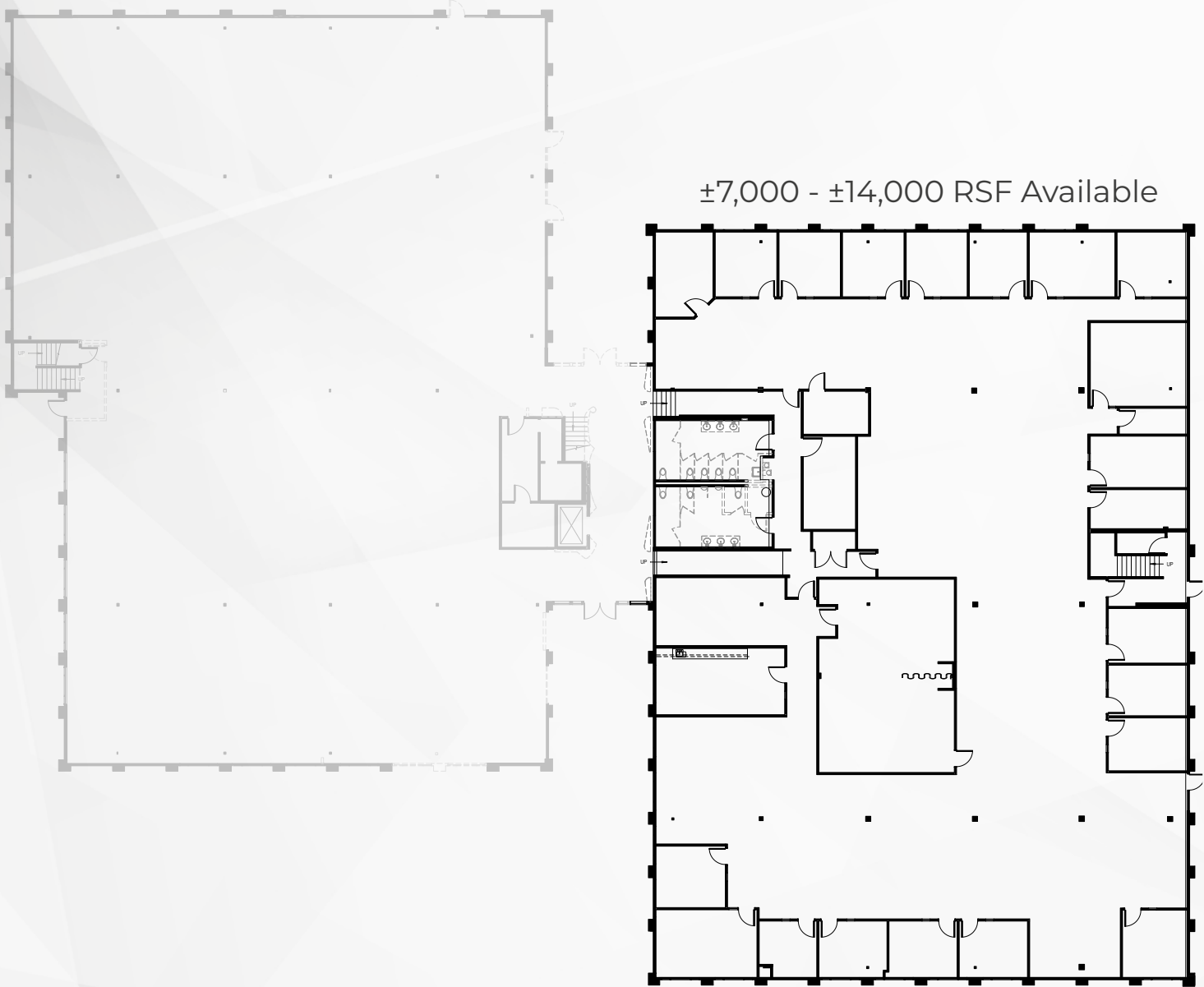
EV charging station



Outdoor collaborative work area



FLOOR PLAN



LOCATION MAP

2135
BUTANO
DRIVE



The distributor of this communication is performing acts for which a real estate license is required. The information contained herein has been obtained from sources deemed reliable but has not been verified and no guarantee, warranty or representation, either express or implied, is made with respect to such information. Terms of sale or lease and availability are subject to change or withdrawal without notice. 23-0321 03-24

JACK BLACKMON
Director
916.569.2372
jack.blackmon@nmrk.com
CA RE License #01999561

MATTHEW ALEMANIA
Associate Director
916.569.2363
matthew.alemania@nmrk.com
CA RE License #01958591

JODIE ROBINSON
Associate
916.569.2318
jodie.robinson@nmrk.com
CA RE License #02214357