

# Corporate Center One

13010 Morris Road  
Suite 600  
Alpharetta, GA 30004  
[peachtreeoffices.com](http://peachtreeoffices.com)







**Peachtree Offices** is an independent, family-owned business that continues to reinvent itself by best meeting the current needs of the office business center industry.





## Alpharetta Location Offers:

- Located in entertainment and technology hub of Atlanta
- New shopping and restaurant district nearby
- Free gym and parking
- Business lounge, break out area
- Open kitchen and sitting area
- MARTA bus station and easy access to GA 400
- Putting green & walking path
- Conference Rooms from 4 to 14-person capacity = \$55.00/hour, \$295.00/day





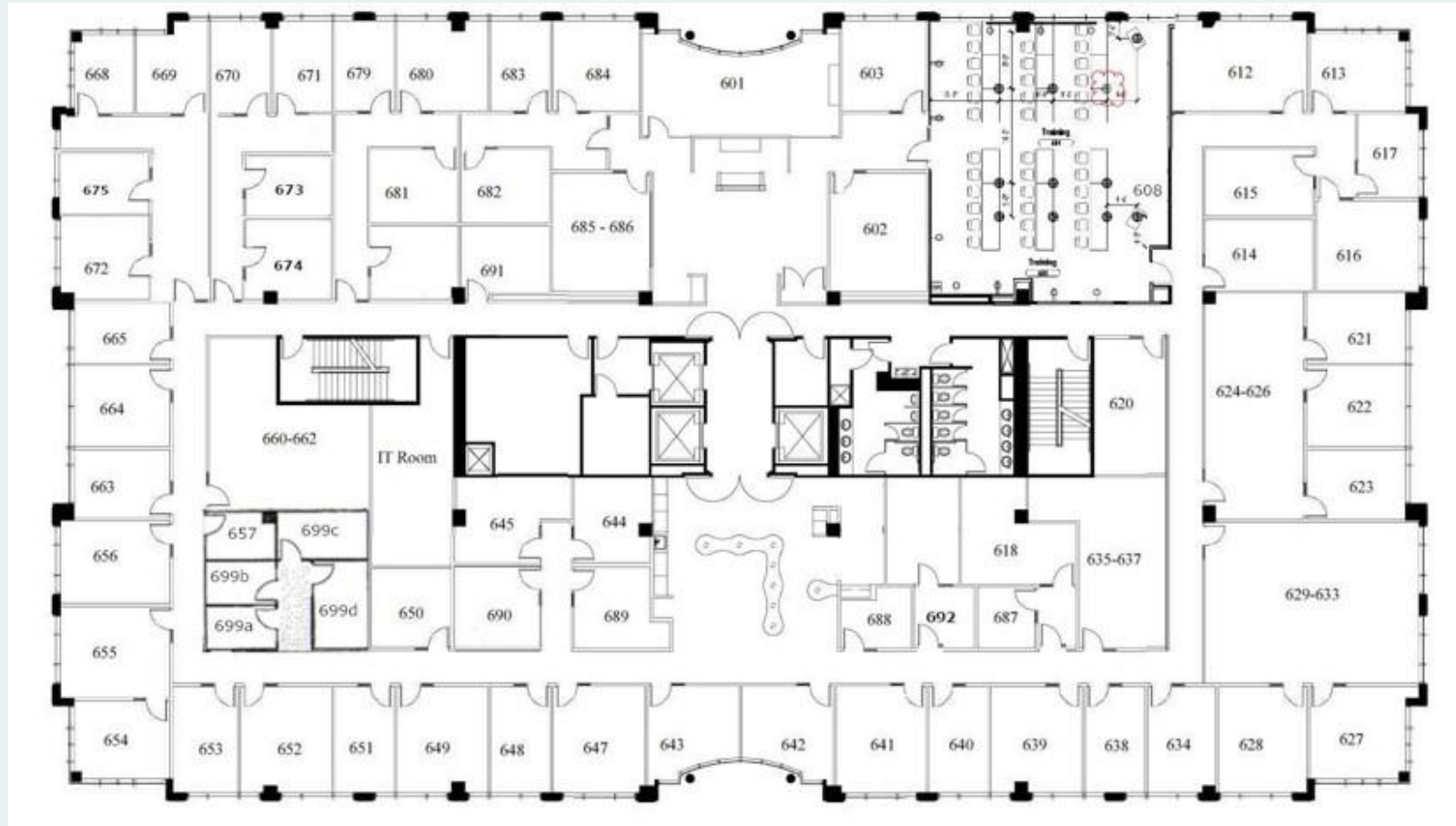


## Peachtree Offices provides your business:

- High-Speed, business-class internet to keep your business running efficiently
- A private office allowing you to focus on business
- Full-time Reception Services Available
- A professional place to meet with prospects and clients at a choice of 6 locations
- Free coffee, water and Wi-Fi in meeting rooms
- Kitchen access with no fees
- Networking events to connect you with colleagues and potential prospects



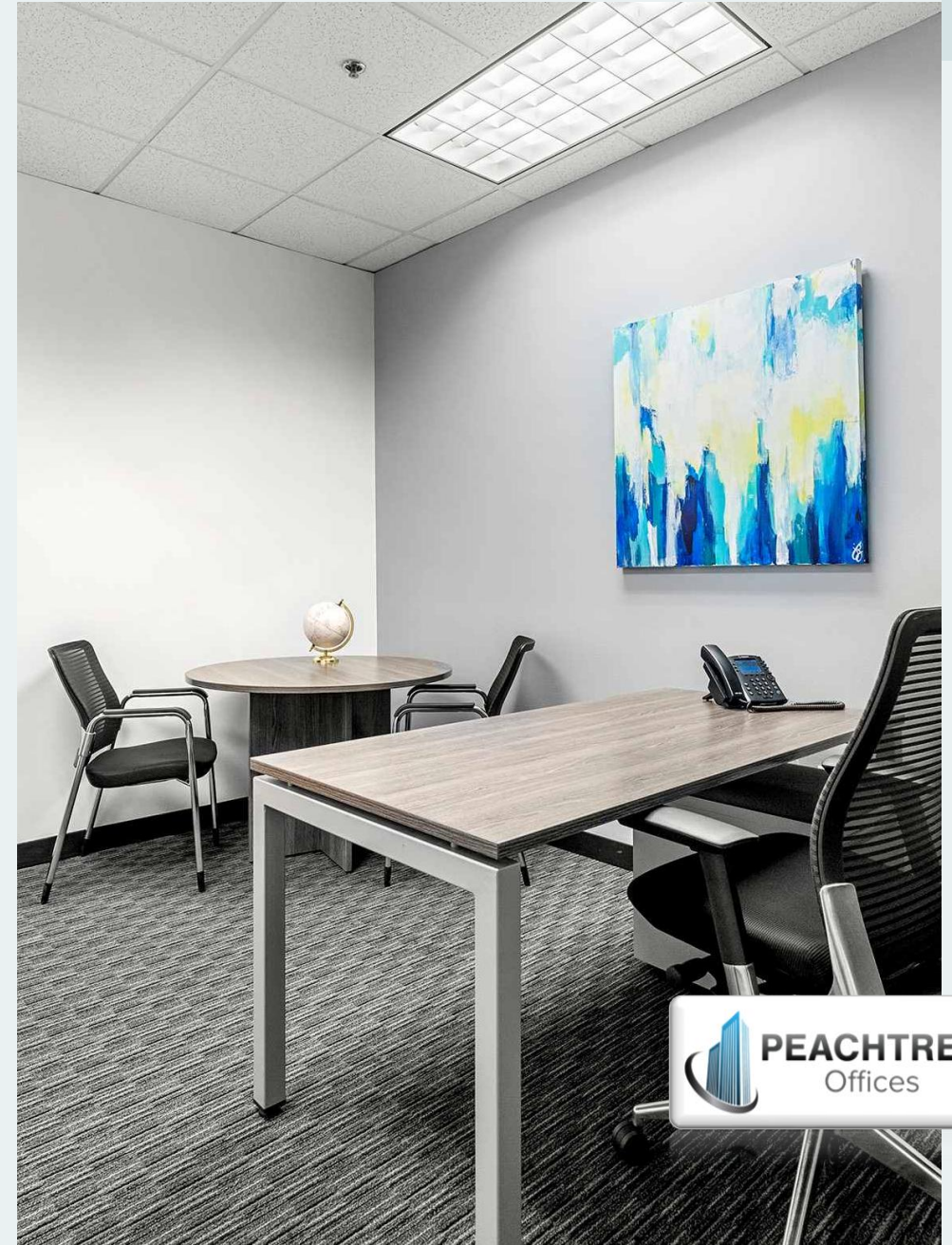
# Suite 600



# Day Office Plans

- Access 8:30 AM to 5 PM, Monday through Friday
- Wi-Fi access
- Professional Receptionists to greet you & your clients
- Coffee/Water/Tea
- Private offices
- Month to month plans

| Private Coworking Office | Rate     |
|--------------------------|----------|
| Days Included per month: |          |
| 4                        | \$192.00 |
| 5                        | \$225.00 |
| 8                        | \$360.00 |
| 10                       | \$450.00 |
| 12                       | \$499.00 |
| 15                       | \$599.00 |



Thank you



Emily Rowell

404.808.5264

[emily@peachtreeoffices.com](mailto:emily@peachtreeoffices.com)

[www.peachtreeoffices.com](http://www.peachtreeoffices.com)

