

OFFICE FOR LEASE

5353 W. Dartmouth Ave.

Denver, CO 80227

Bear Valley Office Building

\$19.75/SF per year (Full Service)

Multiple Suites Available

Energize Denver site EUI score 62.5

Target score 73.8 (Compliant)

Energy Star score 81



RE/MAX NEXUS

**Office • Industrial • Retail • Multi-Family
Land • Hospitality • Farm & Ranch
remaxcommercial.com**

KEN VOSS

Commercial Broker Associate

kenvoss@longmontcommercial.com

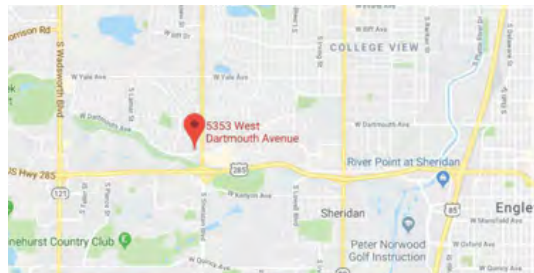
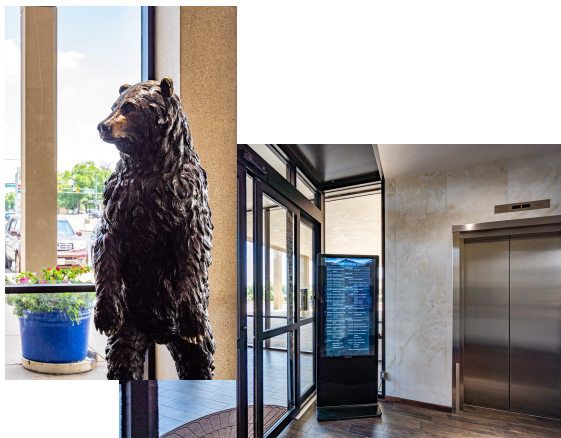
www.longmontcommercial.com

(970) 232-5446 (Mobile)

RE/MAX NEXUS

**1725 Vista View Dr., Suite A
Longmont, CO 80504**





5353

W. DARTMOUTH

BEAR VALLEY OFFICE BUILDING

High-profile professional building

Offices feature abundant natural light

On-site property management

Direct access to Hwy 285/W. Hampton Ave

5 minutes from River Point at Sheridan & S. Santa Fe Dr.

Close to parks, public transportation, many amenities

All expenses included



RE/MAX NEXUS

Office • Industrial • Retail • Multi-Family
Land • Hospitality • Farm & Ranch
remaxcommercial.com

KEN VOSS

Commercial Broker Associate

kenvoss@longmontcommercial.com

www.longmontcommercial.com

(970) 232-5446 (Mobile)

RE/MAX NEXUS

1725 Vista View Dr., Suite A
Longmont, CO 80504

*The accuracy of the information in this offering is not guaranteed, but it is obtained from sources believed to be reliable. Price, terms and other information are subject to change. Parties are advised to independently verify all information.

5353

W. DARTMOUTH

BEAR VALLEY OFFICE BUILDING

High-profile professional building

Offices feature abundant natural light

On-site property management

Direct access to Hwy 285/W. Hampton Ave

5 minutes from River Point at Sheridan & S. Santa Fe Dr.

Close to parks, public transportation, many amenities

All expenses included

Suite 200: 7,855 SF; \$12,928/month

Private & Corner Offices with Western Views,
Conference, Break Area, Open Work Area, Storage

Suite 206: 1,930 SF; \$3,176/month

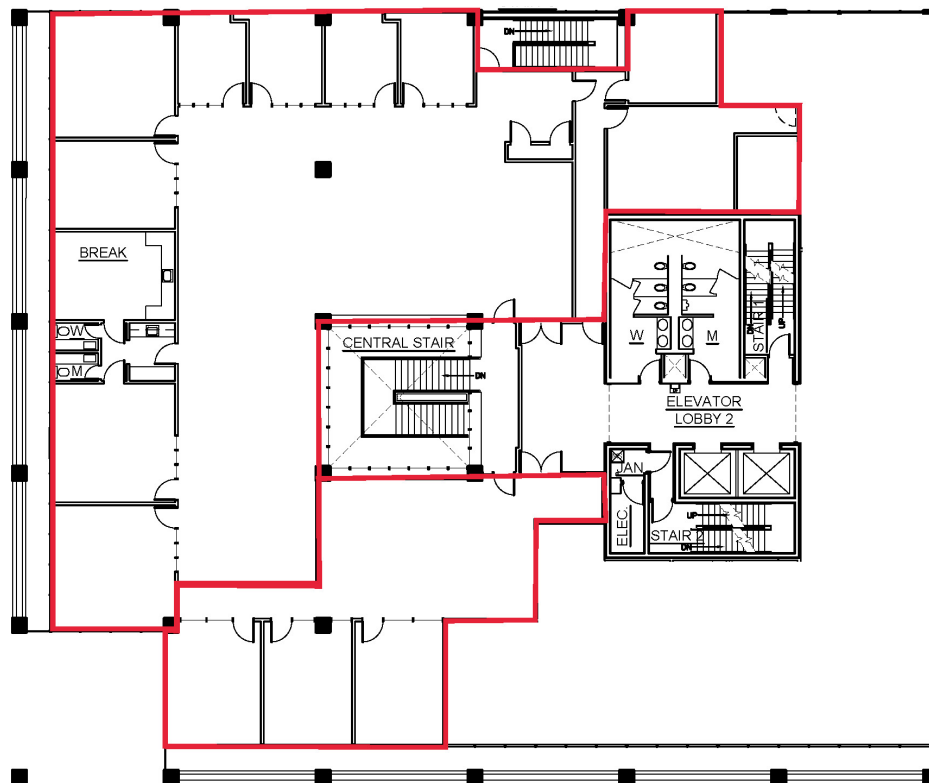
Corner Office with Western Views, 2 Private
Offices/Conference, Open Work Area



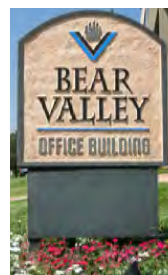
RE/MAX NEXUS

Office • Industrial • Retail • Multi-Family
Land • Hospitality • Farm & Ranch
remaxcommercial.com

Suite 200



Suite 206



KEN VOSS

Commercial Broker Associate

kenvoss@longmontcommercial.com

www.longmontcommercial.com

(970) 232-5446 (Mobile)

RE/MAX NEXUS

1725 Vista View Dr., Suite A
Longmont, CO 80504

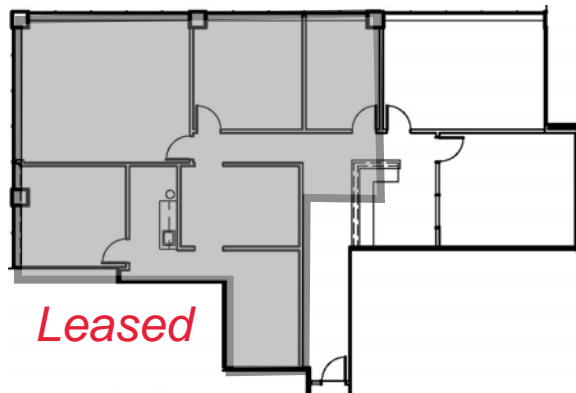
*The accuracy of the information in this offering is not guaranteed, but it is obtained from sources believed to be reliable. Price, terms and other information are subject to change. Parties are advised to independently verify all information.

©2024 RE/MAX, LLC Pub 8/18 Each office is independently owned and operated. 18_257602

5353

W. DARTMOUTH BEAR VALLEY OFFICE BUILDING

Suite 506 B



Suite 502: 1,395 SF; \$2,295/month

Corner Office, Conference, Open Work Area, Reception

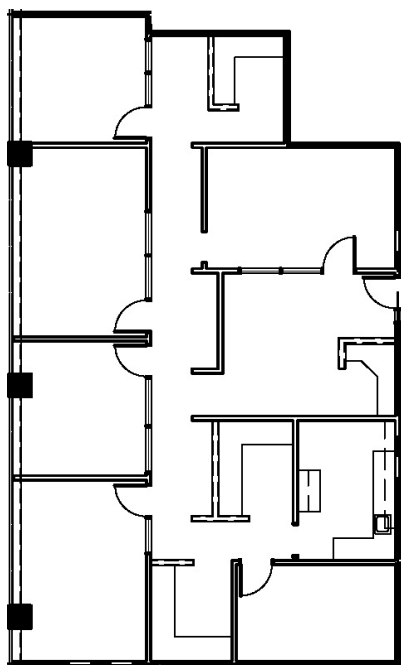
Suite 504: 2,516 SF; \$4,140/month

Great Views! Offices, Conference, Reception, Break Area

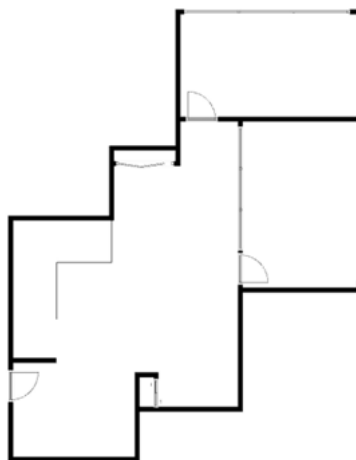
Suite 506 B: ~1,113 SF; \$1,832/month

Offices/Conference, Reception

Suite 504



Suite 502



RE/MAX NEXUS

Office • Industrial • Retail • Multi-Family
Land • Hospitality • Farm & Ranch
remaxcommercial.com



KEN VOSS

Commercial Broker Associate

kenvoss@longmontcommercial.com

www.longmontcommercial.com

(970) 232-5446 (Mobile)

RE/MAX NEXUS

1725 Vista View Dr., Suite A
Longmont, CO 80504

*The accuracy of the information in this offering is not guaranteed, but it is obtained from sources believed to be reliable. Price, terms and other information are subject to change. Parties are advised to independently verify all information.

©2024 RE/MAX, LLC Pub 8/18 Each office is independently owned and operated. 18_257602

5353

W. DARTMOUTH

BEAR VALLEY OFFICE BUILDING

High-profile professional building

On-site property management

Direct access to Hwy 285/W. Hampton Ave

5 minutes from River Point at Sheridan & S. Santa Fe Dr.

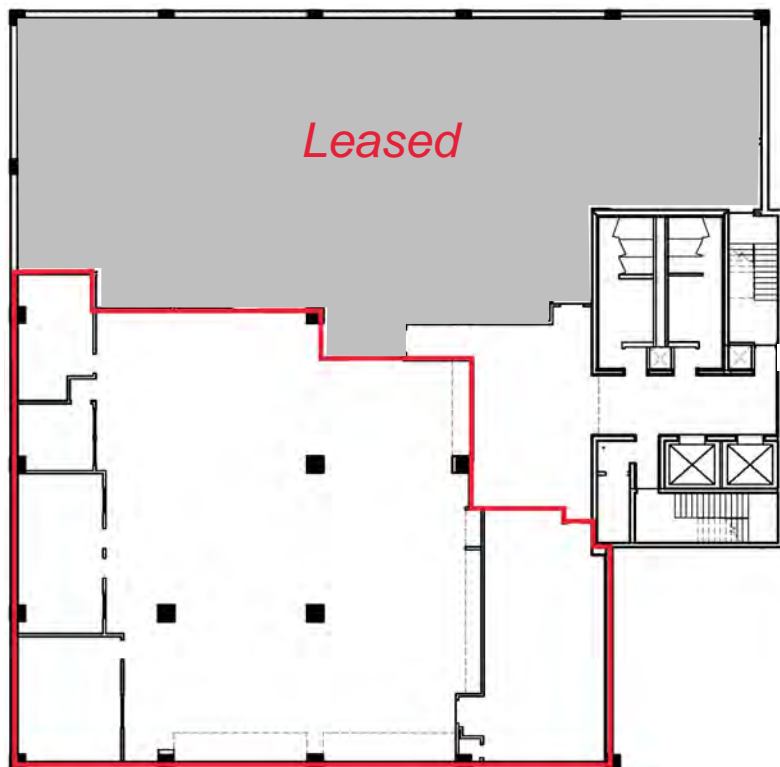
Close to parks, public transportation, many amenities

All expenses included

Suite LL40: ~ 6,000 SF; \$ Negotiable/month

(Basement)

Offices, Open Work Area, Storage



Suite LL40



RE/MAX NEXUS

Office • Industrial • Retail • Multi-Family

Land • Hospitality • Farm & Ranch

remaxcommercial.com

KEN VOSS

Commercial Broker Associate

kenvoss@longmontcommercial.com

www.longmontcommercial.com

(970) 232-5446 (Mobile)

RE/MAX NEXUS

1725 Vista View Dr., Suite A

Longmont, CO 80504



*The accuracy of the information in this offering is not guaranteed, but it is obtained from sources believed to be reliable. Price, terms and other information are subject to change. Parties are advised to independently verify all information.