

For more information
please contact:

Vickey Walker

Senior Associate

+1 801 618 5696

vicoria.walker@cbre.com

Legend Hills

Sublease

4,784 SF | 2 separate suites

1785 E. 1405 S. Legend Hills

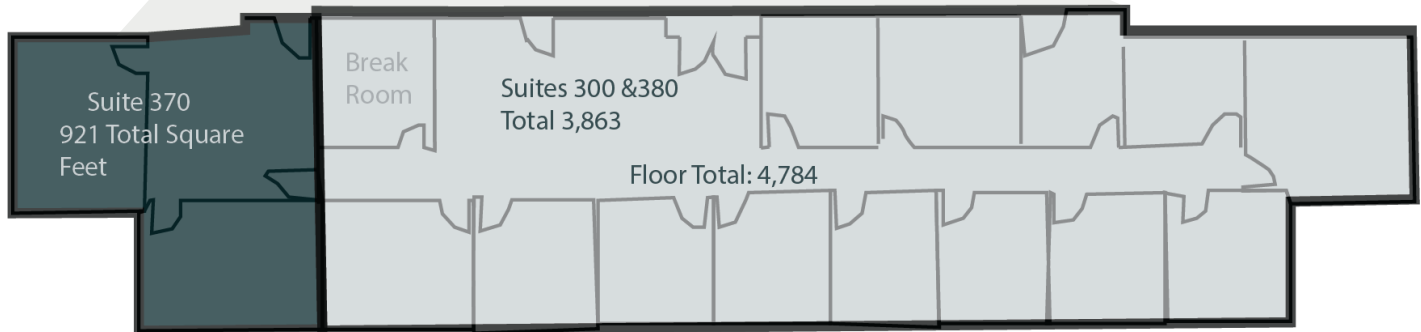
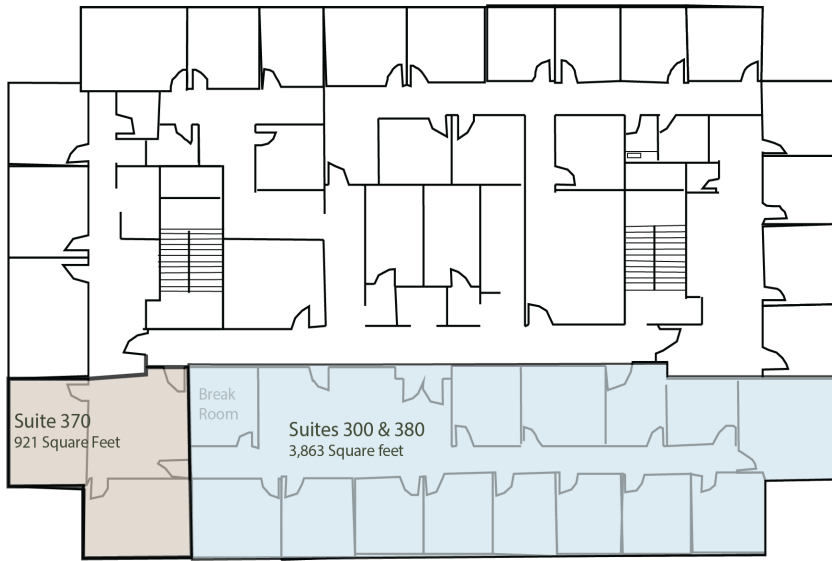
Clearfield, Utah 84105



- + \$15 FSG
- + Total 4,784 RSF can be divisible to 921 SF or 3,863 S with separate entrances
- + Lease expires Nov. 30, 2025
- + 15 Private Offices
- + Breakroom
- + Near Hill Air Force Base
- + Suites 300, 370 & 380



Floor Plan



Contact Us

Vickey Walker
Senior Associate
+1 801 618 5696
vicoria.walker@cbre.com

Craig Thomas
Senior Vice President
+1 801 201 3657
craig.thomas@cbre.com

© 2021 CBRE, Inc. All rights reserved. This information has been obtained from sources believed reliable, but has not been verified for accuracy or completeness. You should conduct a careful, independent investigation of the property and verify all information. Any reliance on this information is solely at your own risk. CBRE and the CBRE logo are service marks of CBRE, Inc. All other marks displayed on this document are the property of their respective owners, and the use of such logos does not imply any affiliation with or endorsement of CBRE. Photos herein are the property of their respective owners. Use of these images without the express written consent of the owner is prohibited.