

AVAILABLE FOR LEASE  
± 2,000 SF Warehouse with Office



**Rio Verde Center**  
1145 GREENFIELD DRIVE, EL CAJON, CA 92021

**Nick Mane** | Lic. 01939391  
Director - Sales & Leasing  
Tel (760) 840-7140  
Nick@PacificCoastCommercial.com

**Ken Robak** | Lic. 01236527  
Executive Director | Brokerage  
Tel (619) 469-3600  
Ken@PacificCoastCommercial.com

**Jasmine Golia** | Lic. 02131001  
Sales & Leasing Associate  
Tel (619) 469-3600  
Jasmine@PacificCoastCommercial.com

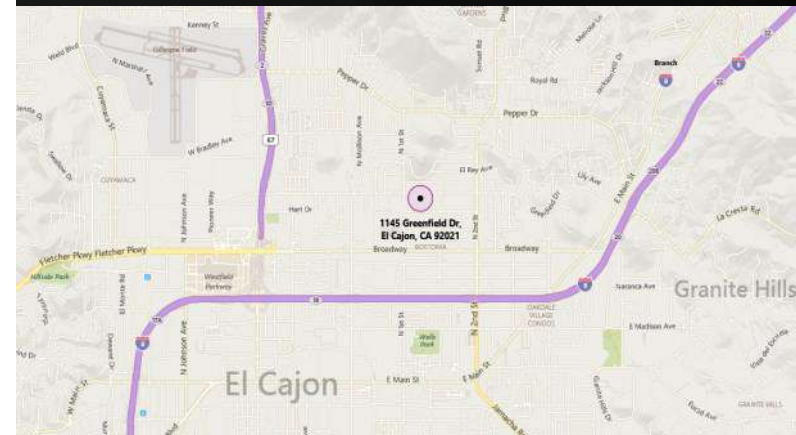
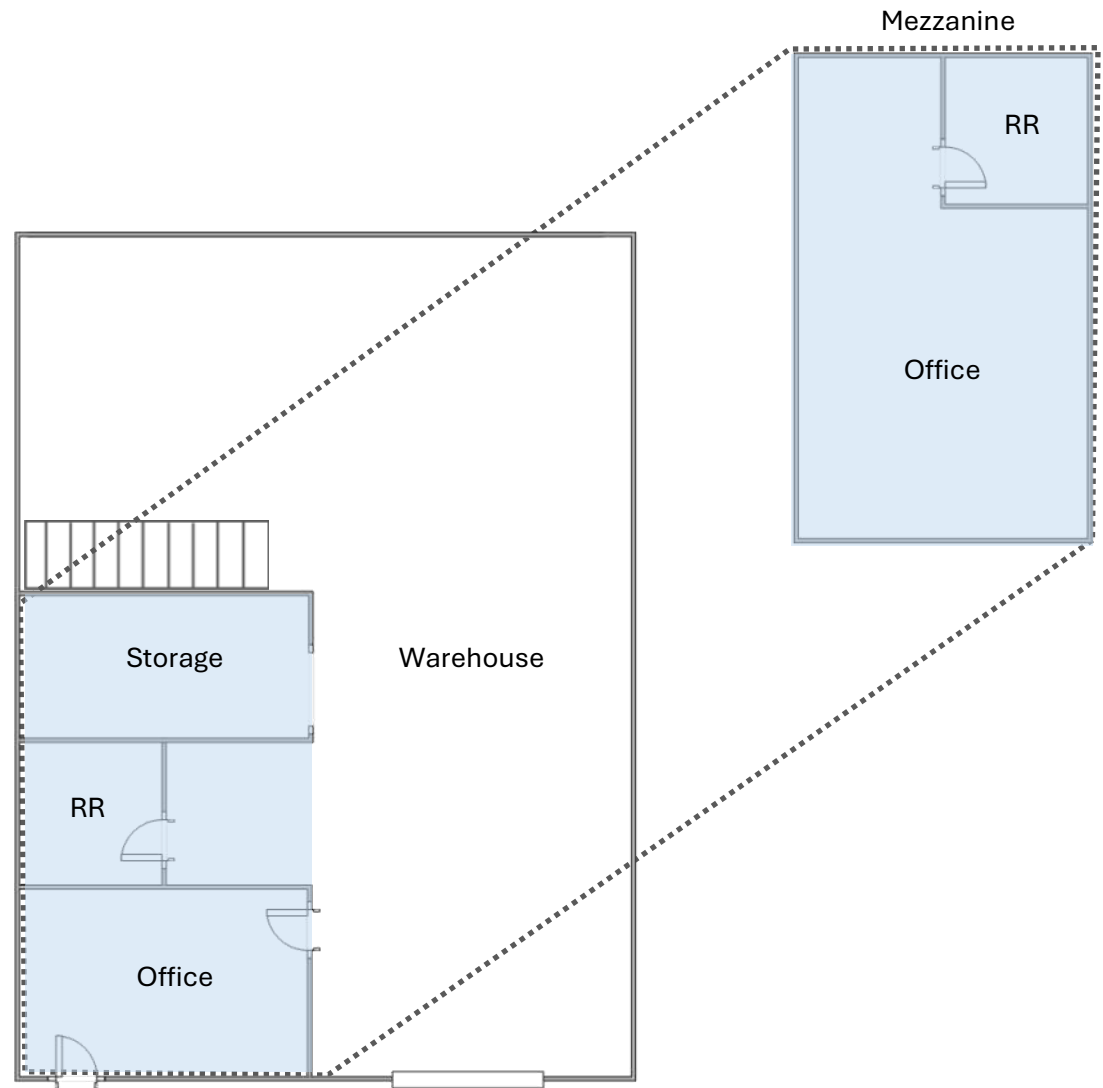


# SUITE FEATURES

\*Floor plan is not to scale; for reference purposes only.

- Suite F: ± 2,000 SF Warehouse with Office
- County of San Diego C-36 Zoning
- Gated/Secured Parking Lot
- Bonus Mezzanine
- Fire Sprinklers
- 12' x 14' Roll Up Door
- Two (2) Private Restrooms
- Lease Rate: \$3,200 Gross
- Available April 1, 2025

DO NOT DISTURB TENANT - Contact Agent For Tour



The information contained herein has been given to us by the owner of the property or other sources we deem reliable, we have no reason to doubt its accuracy, but we do not guarantee it. All information, including zoning and use, should be verified prior to transaction.

**Nick Mane** | Lic. 01939391  
Director - Sales & Leasing  
Tel (760) 840-7140  
Nick@PacificCoastCommercial.com

**Ken Robak** | Lic. 01236527  
Executive Director | Brokerage  
Tel (619) 469-3600  
Ken@PacificCoastCommercial.com

**Jasmine Golia** | Lic. 02131001  
Sales & Leasing Associate  
Tel (619) 469-3600  
Jasmine@PacificCoastCommercial.com

