



Colliers

For Lease or Sale

3.72 Acres

5201-5211 S Paramount Blvd

Pico Rivera, CA 90660

Richard Schwartz

Vice Chairman
Dir +1 909 937 6307
Lic. 01712680
richard.schwartz@colliers.com

Joey Reaume

Executive Vice President
Dir +1 909 612 2601
Lic. 01918579
joey.reaume@colliers.com

Christopher Sheehan

Senior Executive Vice President
Dir +1 310 321 1831
Lic. 1202469
chris.sheehan@colliers.com

Nick Moscicki

Senior Associate
Dir +1 909 937 6315
Lic. 02078491
nick.moscicki@colliers.com

Alexander Davis

Associate
Dir +1 949 724 5557
Lic. 02221838
alexander.davis@colliers.com

Asking Rate: \$0.50/sf NNN



Perfect for equipment rentals, contractor yard, outside storage



Trailer parking not approved



10,000 SF warehouse



1,500 SF office



3 GL doors



Zoning M2-B



Close proximity to 605 fwy



2000 amps

Copyright © 2021 Colliers International.

Information herein has been obtained from sources deemed reliable, however its accuracy cannot be guaranteed. The user is required to conduct their own due diligence and verification.

Paramount Site Refurbishment Concept

Class A Logistics Yard Asset



Back corner of site currently allocated to detention

New site asphalt with enhanced storm water system on-site

Enhanced site screening on Paramount Blvd with automated gate

New site lighting - yard lights on poles

New site fencing around perimeter of site

90' setback to stay in place - new landscaping budgeted

Existing structure to be renovated as logistics yard office - new roof overlay

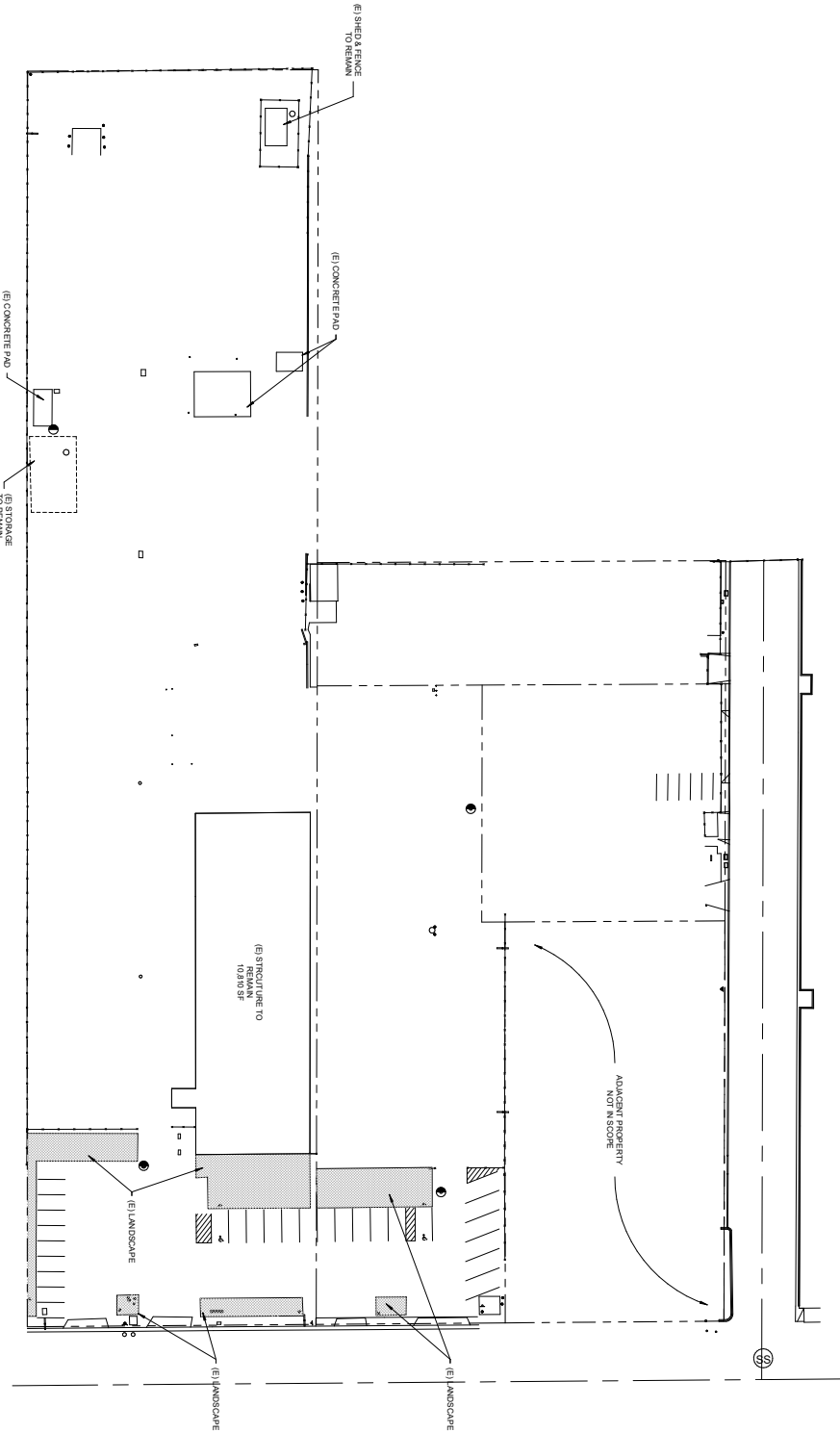
New site curb, gutter and sidewalk budgeted

Retail Map



The information contained herein has been obtained from the property owner or other third party and is provided to you without verification as to accuracy. We (Colliers, Lee & Associates, its brokers, employees, agents, principals, officers, directors and affiliates) make no warranty or representation regarding the information, property, or transaction. You and your attorneys, advisors and consultants should conduct your own investigation of the property and transaction

Site Plan



Location Map

