

48 WEST 22ND STREET

BETWEEN 5TH & 6TH AVENUES | FLATIRON



48 WEST 22ND STREET

BETWEEN 5TH & 6TH AVENUES | FLATIRON

PROPERTY DETAILS

- SIZE: ~2,000 SF Ground Floor
500 SF Lower Level
- FRONTAGE: 19' on West 22nd Street
- CEILING HEIGHT: 12'
- POSSESSION: Arranged
- TRANSPORTATION:

HIGHLIGHTS

- Dense residential & office population
- One block from Madison Square Park
- Seven-day-a-week shopping corridor
- One block away from the mass transit station hubs
- Neighboring tenants include: *Beatnic, COTE, TONAL, Silver Mirror facial bar, Juice Press, Honeybrains, Toto, Trader Joe's, Kohler, HOKA, Alo, & many more!*

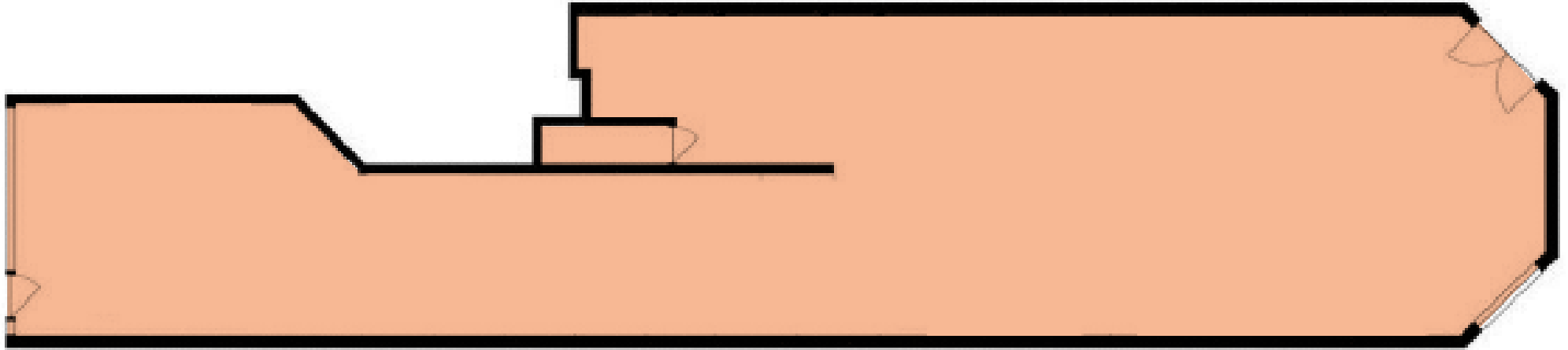


48 WEST 22ND STREET

BETWEEN 5TH & 6TH AVENUES | FLATIRON

FLOOR PLANS:

GROUND FLOOR - 2,181 SF



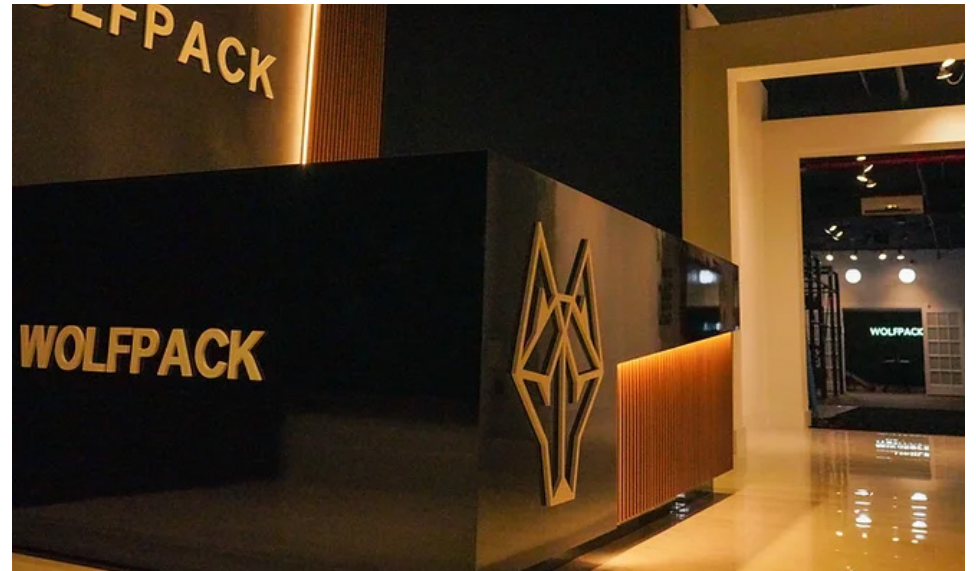
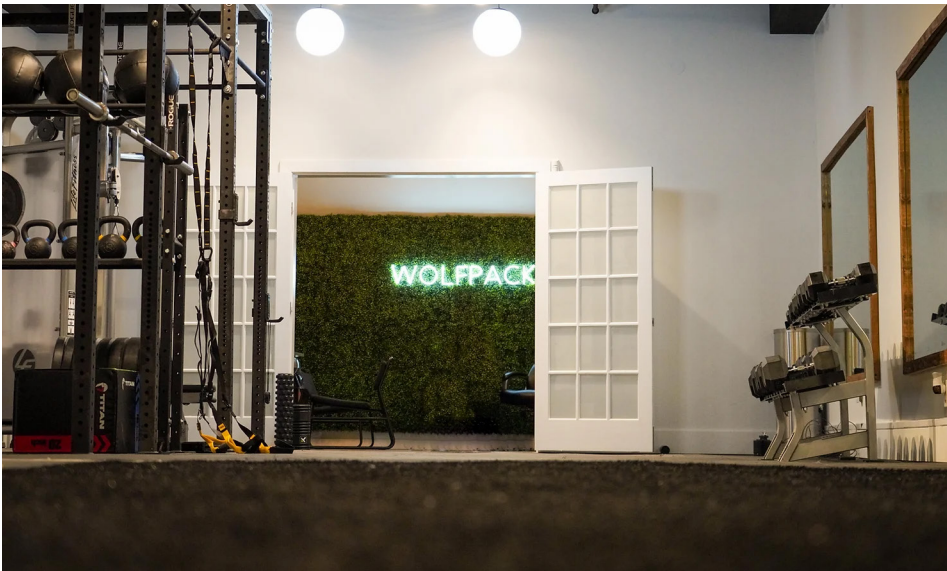
LOWER LEVEL - 1,000 SF



48 WEST 22ND STREET

BETWEEN 5TH & 6TH AVENUES | FLATIRON

INTERIORS:



All information supplied in this marketing presentation and/or flyer is from sources deemed reliable and is furnished subject to errors, omissions, modifications, removal of listings from sale/lease and to any listing condition. Any square footage, dimensions, floor plans and/or technical data set forth are approximations and are subject to further elaboration/confirmation.

48 WEST 22ND STREET

BETWEEN 5TH & 6TH AVENUES | FLATIRON

FOR MORE INFORMATION,
PLEASE CONTACT:

BEN NAMDAR

516.406.9176 | BNamdar@ksrny.com

ALBERT SALAMEH

646.944.0797 | ASalameh@ksrny.com

DAVID GREEN

516.320.0260 | DGreen@ksrny.com

