

## OFFICE FOR LEASE OR SALE



### OFFICE HIGHLIGHTS

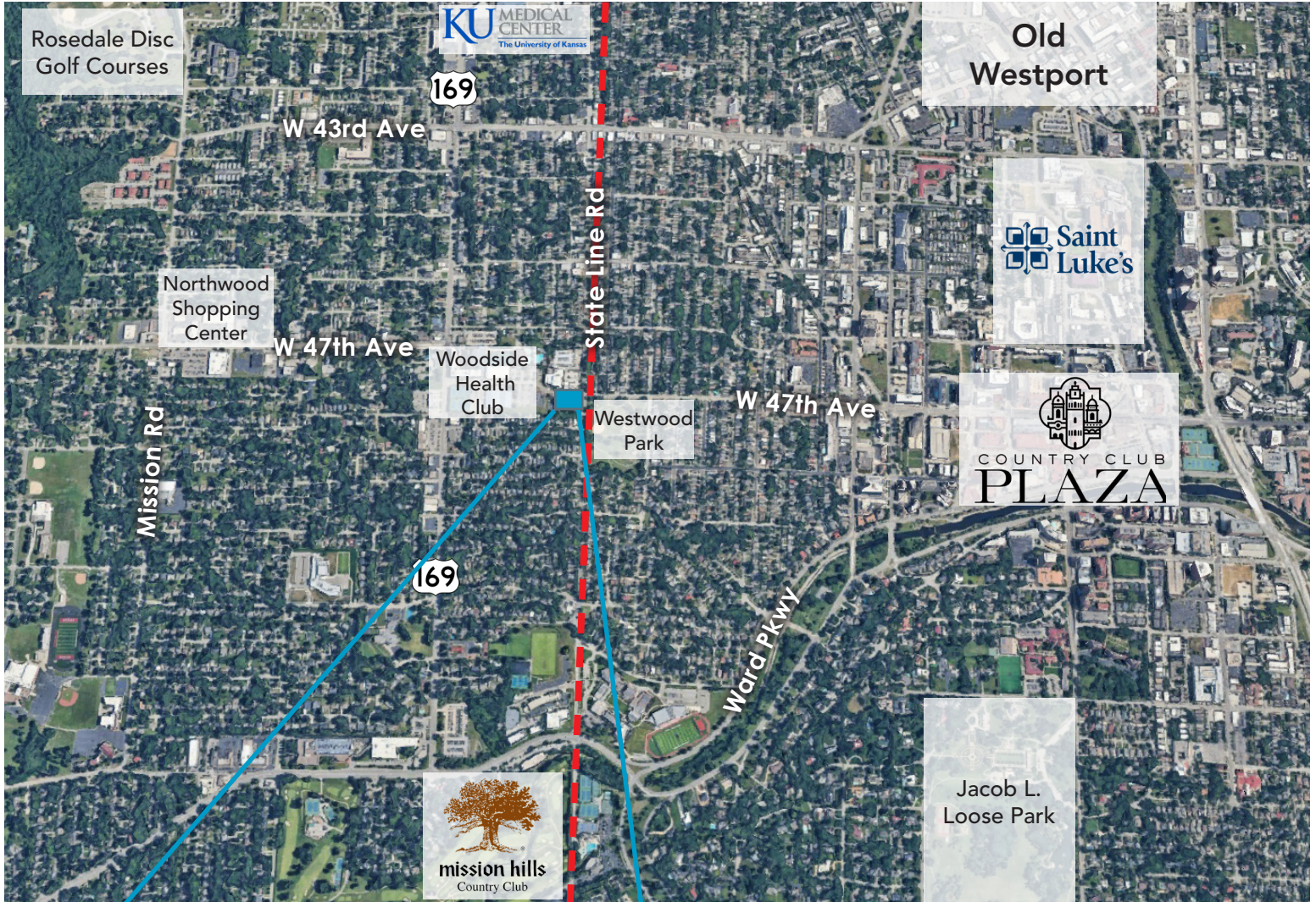
- **Suite 103 - 2,165 RSF**
  - Available 1/1/25
- **Suite 204 - 3,964 RSF**
- **Suite 210 - 4,007 RSF**
  - Suites 204 and 210 can be combined for 7,971 RSF
- **Suite 220 - 1,891 SF**
  - Available 2/1/25
- Prime location within walking distance to the Country Club Plaza
- Adjacent to Woodside Village which includes the health & tennis club and 36,000 SF of new high end retail shops including Blue Sushi Sake Grill, The Roasterie, and Unforked
- Building amenities include a full kitchen, fitness center, and locker rooms
- Covered parking garage and surface parking

### BUILDING CONTACT

**MOLLY CRAWFORD MUNNINGHOFF**  
P (816) 701-5013  
mccrawford@copaken-brooks.com



# LOCATION AND DEMO







Within walking distance of Country Club Plaza



Woodside Health & Tennis Club



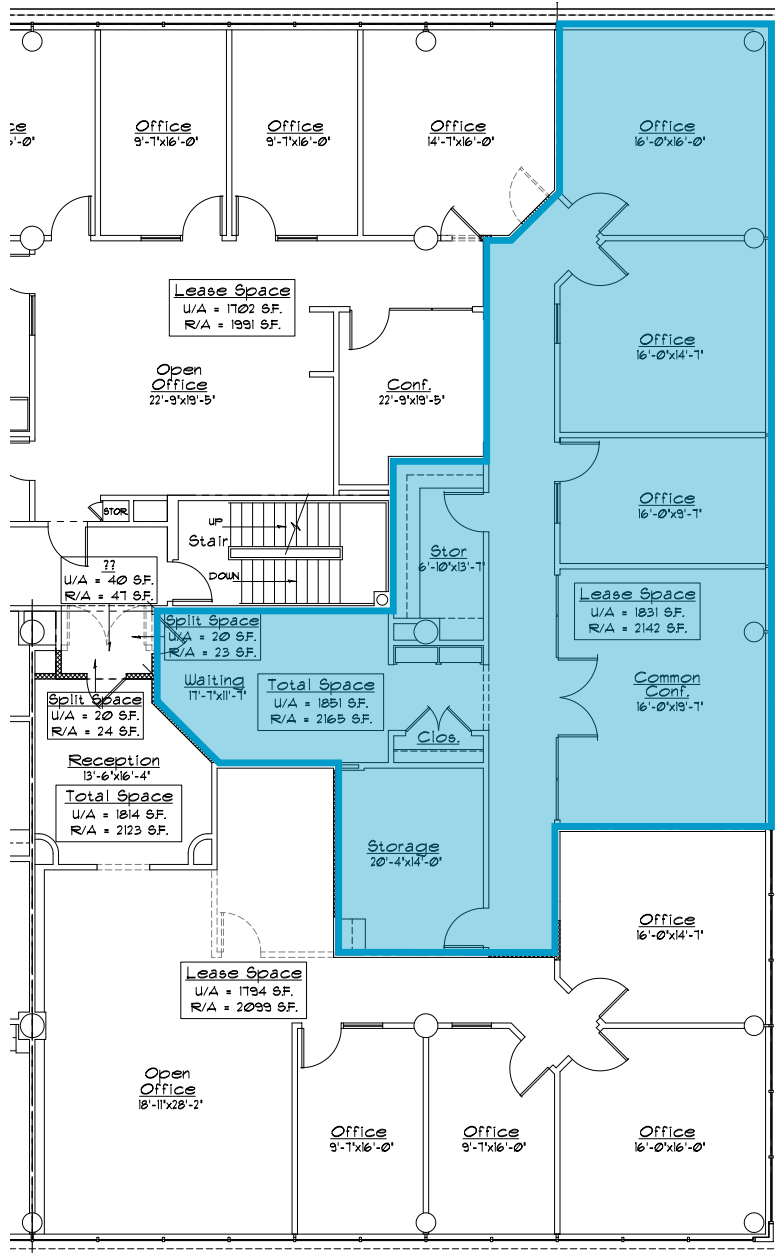
Woodside Village  
New town center for the City of Westwood



Westwood Park

# SUITE 103: 2,165 SF

AVAILABLE 1/1/2025





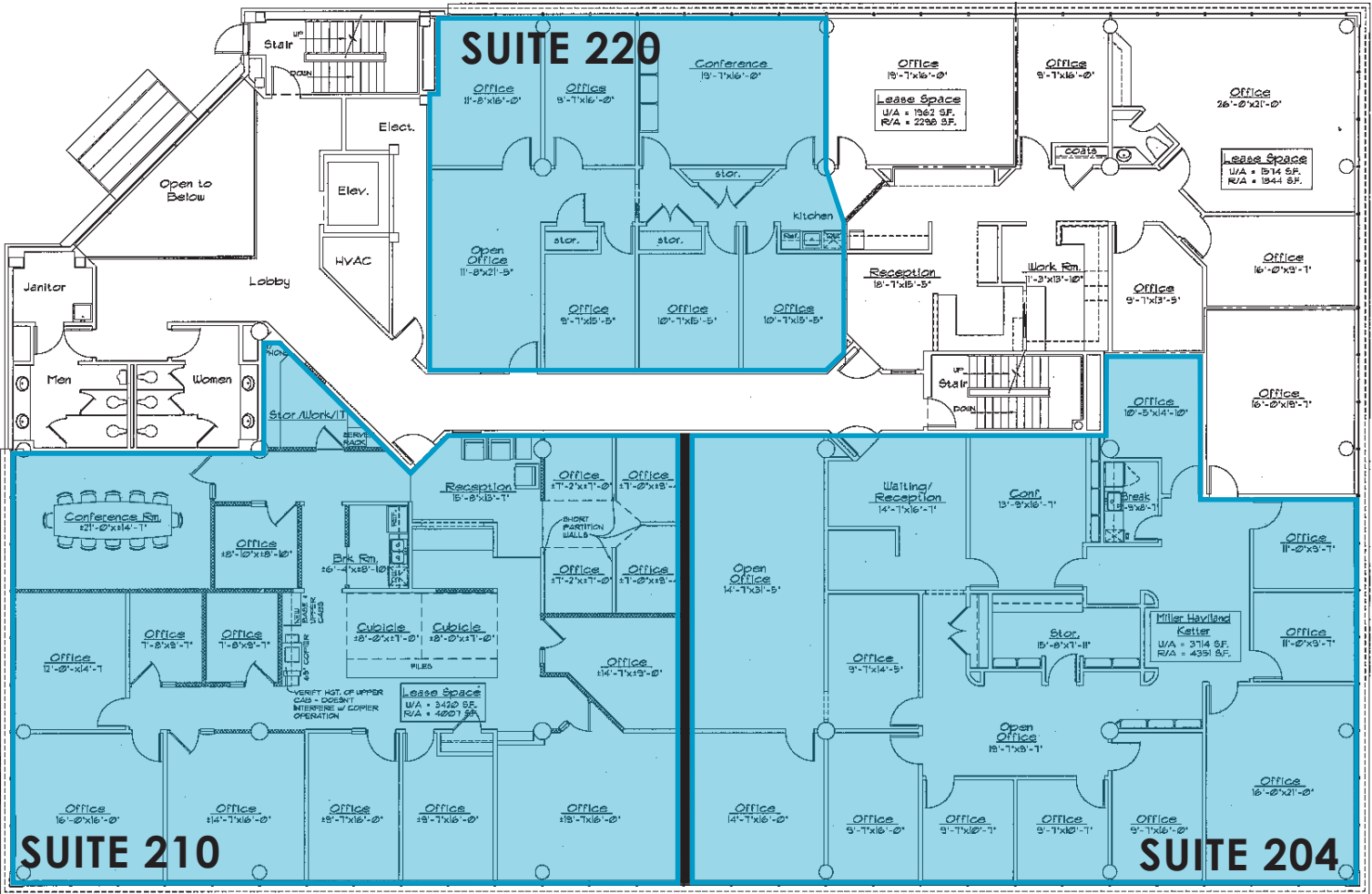
**SUITE 204:** 3,964 SF

**SUITE 210:** 4,007 SF

CAN BE COMBINED FOR 7,971 RSF

**SUITE 220:** 1,891 SF

AVAILABLE 2/1/2025



Wall Legend

# OFFICE FOR LEASE OR SALE



## BUILDING CONTACT

**MOLLY CRAWFORD MUNNINGHOFF**

P (816) 701-5013

[mcrawford@copaken-brooks.com](mailto:mcrawford@copaken-brooks.com)

All information furnished regarding property for sale or lease is from sources deemed reliable, but no warranty or representation is made as to the accuracy thereof and the same is subject to errors, omissions, changes of prices, rental or other conditions, prior sale or lease, or withdrawal without notice.