

# Miracle Mile Office for Shared Sublease or Entire Floor Opportunity

6420 Wilshire Blvd  
Los Angeles, CA 90048  
17th Floor



**Premises** ± 150 - 10,532 RSF

**Rental Rate** Negotiable

**Term** Flexible

- » Immediate Occupancy
- » Perfect for Attorney, CPA & any other Professional
- » Stellar Views from the beach to the Hollywood Hills
- » Recently Renovated Building
- » Motor Court Entry with Valet Staffing
- » Garden Plaza with Seating
- » Dual Access from Wilshire Bl & San Vicente Bl

[Click to Watch  
Virtual Tour](#)

### Option A - Shared Sublease

- 4 Available Window Offices
- 2 Shared Conference Rooms
- Shared Kitchen with Sink & Dishwasher

### Option B - Sublease Entire Floor

- 5 Executive Window Offices
- 10 Standard Window Offices
- 3 Interior Offices
- 2 Conference Rooms
- 5 Bullpen Stalls
- Kitchen with Sink & Dishwasher
- Storage Room
- Printer/Copy Room

**Ron Kaspi**  
310.202.9008 x127  
[ron@wilshireag.com](mailto:ron@wilshireag.com)  
DRE# 01986929



**Kevin Taylor**  
310.202.9008 x133  
[kevin@wilshireag.com](mailto:kevin@wilshireag.com)  
DRE# 02237940



# Miracle Mile Office for Shared Sublease or Entire Floor Opportunity

6420 Wilshire Blvd  
Los Angeles, CA 90048  
17th Floor



**Ron Kaspi**  
310.202.9008 x127  
[ron@wilshireag.com](mailto:ron@wilshireag.com)  
DRE# 01986929



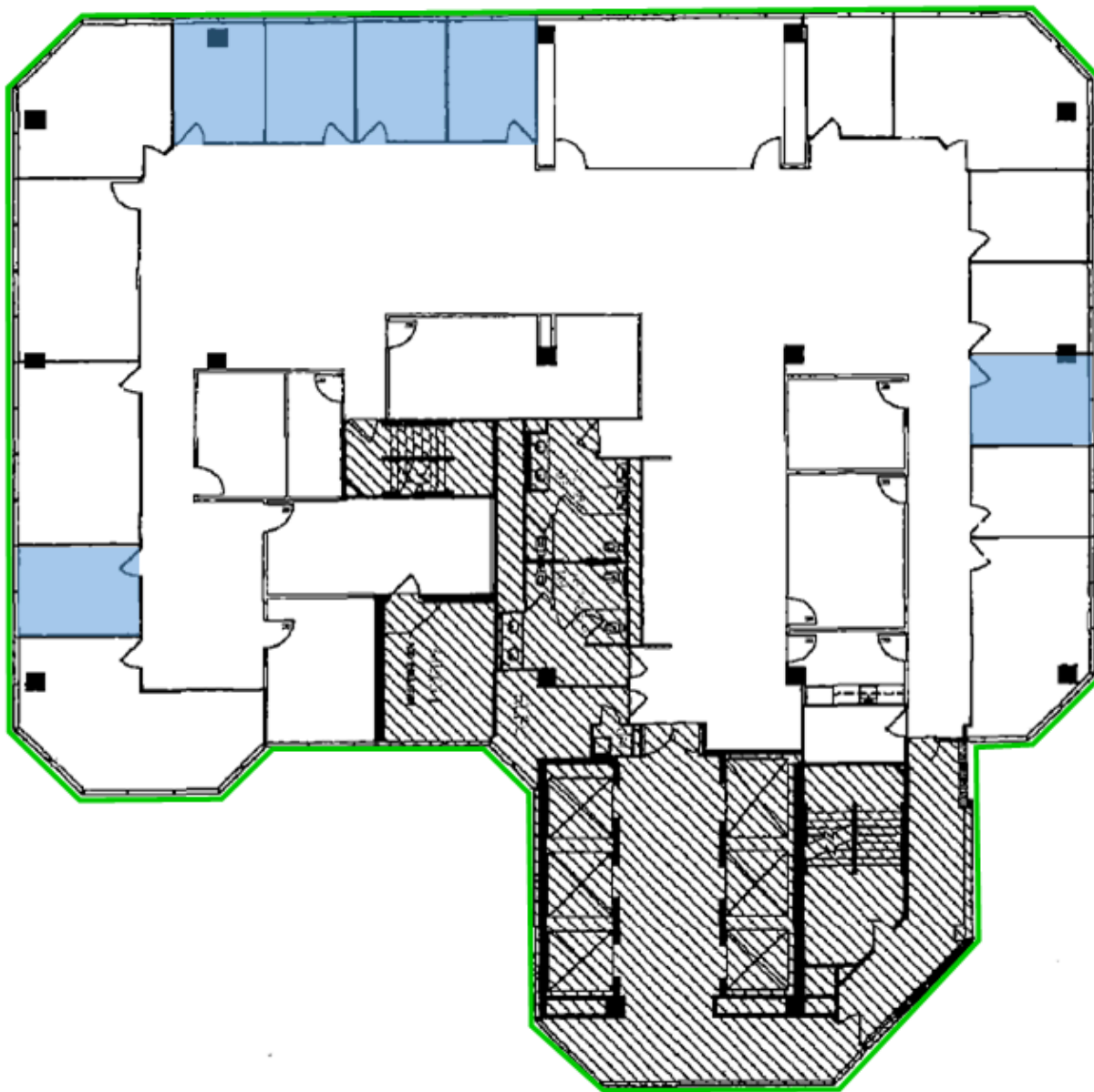
**Kevin Taylor**  
310.202.9008 x133  
[kevin@wilshireag.com](mailto:kevin@wilshireag.com)  
DRE# 02237940

# Miracle Mile Office for Shared Sublease or Entire Floor Opportunity

6420 Wilshire Blvd  
Los Angeles, CA 90048  
17th Floor

Option A : Available Shared Office

Option B: Available Full Floor



[Click to Watch  
Virtual Tour](#)

**Ron Kaspi**  
310.202.9008 x127  
[ron@wilshireag.com](mailto:ron@wilshireag.com)  
DRE# 01986929



**Kevin Taylor**  
310.202.9008 x133  
[kevin@wilshireag.com](mailto:kevin@wilshireag.com)  
DRE# 02237940