

77 ACCORD PARK DRIVE

Norwell, MA 02061

Flex Space For Lease

2,100 - 13,000 SF



Leasing Information:
617.951.4100

Ellison Patten
617.951.4136
epatten@lpc.com

Lincoln

Lincoln Property Company
53 State Street, 8th Floor
Boston, MA 02109

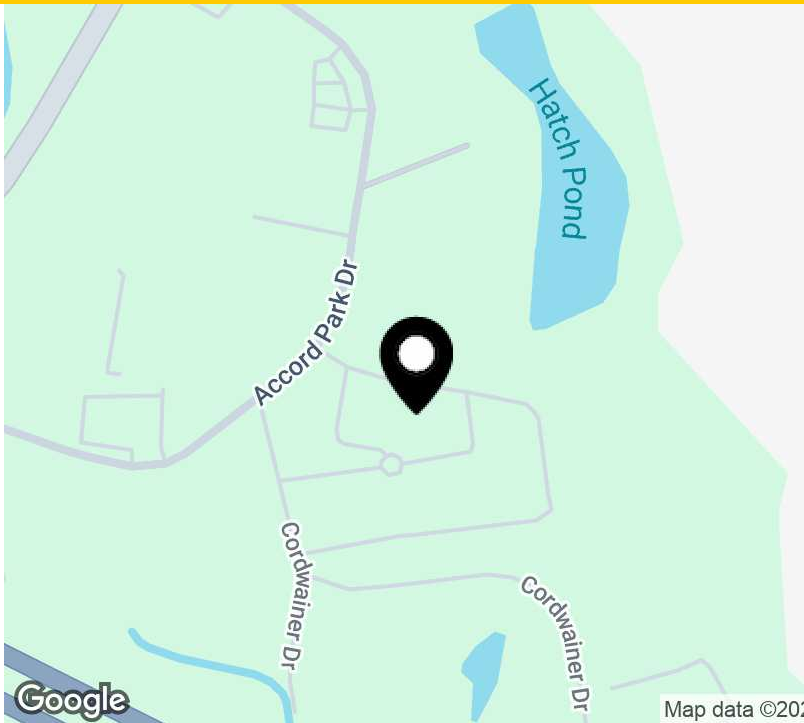
www.lpc.com

77 ACCORD PARK DRIVE

Norwell, MA 02061

Building Specifications

22,000 SF



Property Highlights

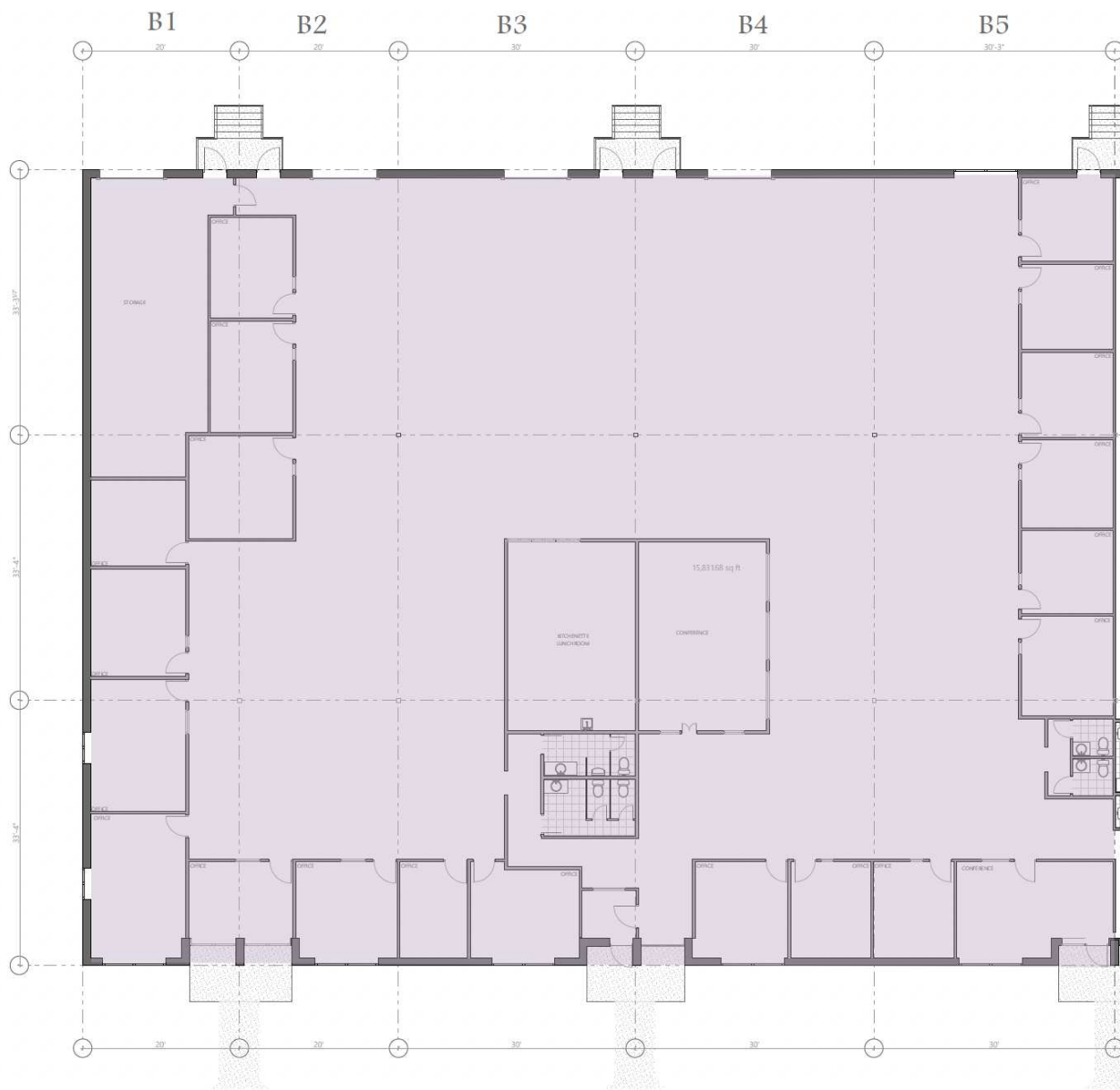
- 18' clear height
- On-site management
- Landscaped campus-style setting
- Ample parking and tailboard loading

Availabilities	SF	Date Available
Ground Floor B1-B5	4,000 - 13,000 SF	Immediately
Ground Floor B8	3,570 SF	Immediately
Ground Floor C5-C6	2,100 - 5,100 SF	Immediately
Ground Floor D4	4,500 SF	Immediately

Ellison Patten

617.951.4136
epatten@lpc.com

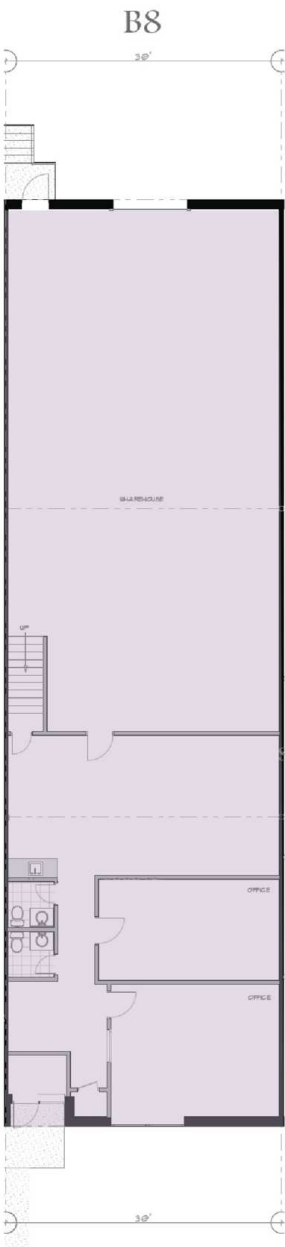
Lincoln



Suite	Size	Lease Rate	Description
■ Ground Floor B1-B5	4,000 - 13,000 SF	Negotiable	Immediately

Ellison Patten
617.951.4136
epatten@lpc.com

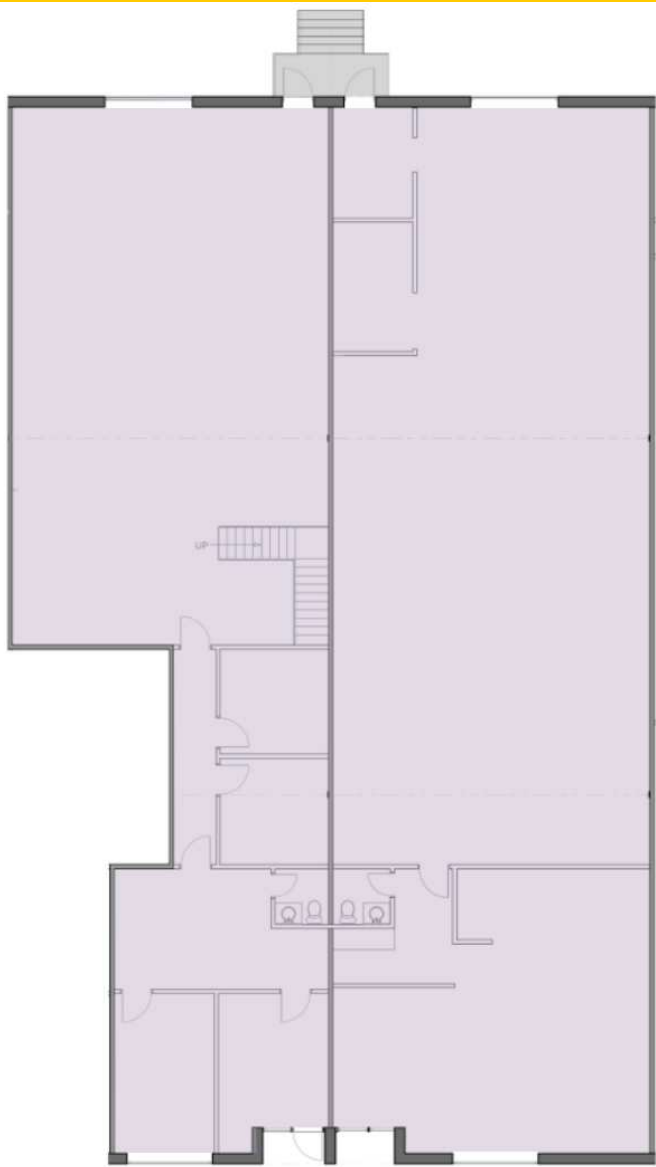
Lincoln



Suite	Size	Lease Rate	Description
■ Ground Floor B8	3,570 SF	Negotiable	Immediately

Ellison Patten
617.951.4136
epatten@lpc.com

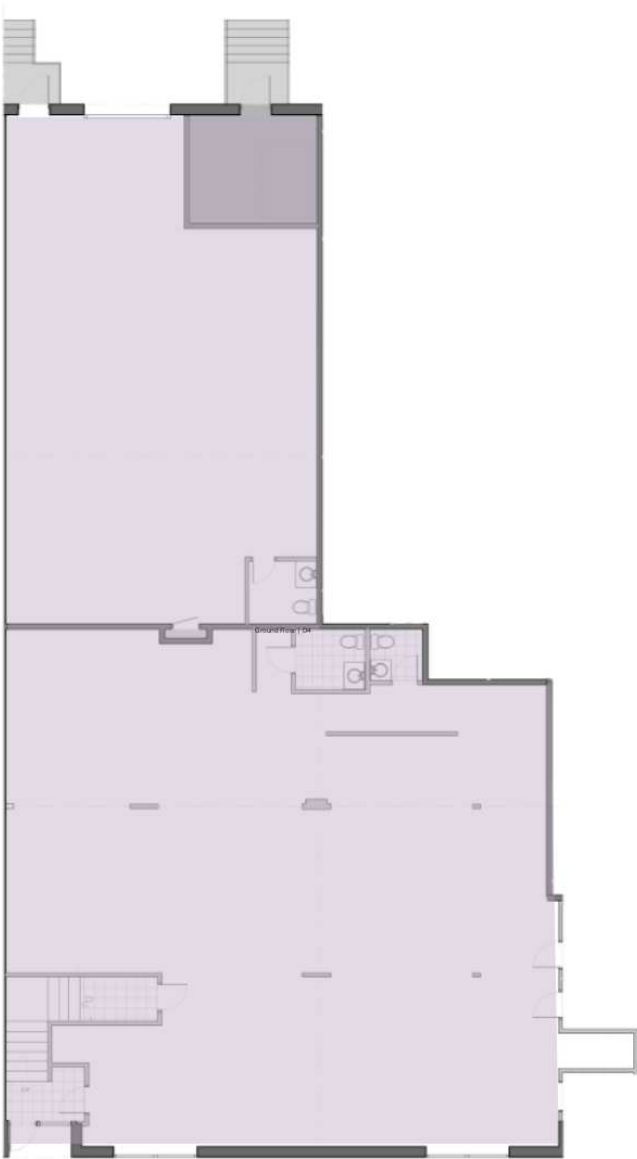
Lincoln



Suite	Size	Description
■ Ground Floor C5-C6	2,100 - 5,100 SF	Immediately

Ellison Patten
617.951.4136
epatten@lpc.com

Lincoln



Suite	Size	Description
■ Ground Floor D4	4,500 SF	Immediately

Ellison Patten

617.951.4136

epatten@lpc.com

Lincoln

77 ACCORD PARK DRIVE

Norwell, MA 02061

Photos
22,000 SF



Ellison Patten

617.951.4136
epatten@lpc.com

Lincoln

77 ACCORD PARK DRIVE

Norwell, MA 02061

Photos
22,000 SF



Ellison Patten

617.951.4136

epatten@lpc.com

Lincoln

77 ACCORD PARK DRIVE

Norwell, MA 02061

Photos
22,000 SF



Ellison Patten

617.951.4136
epatten@lpc.com

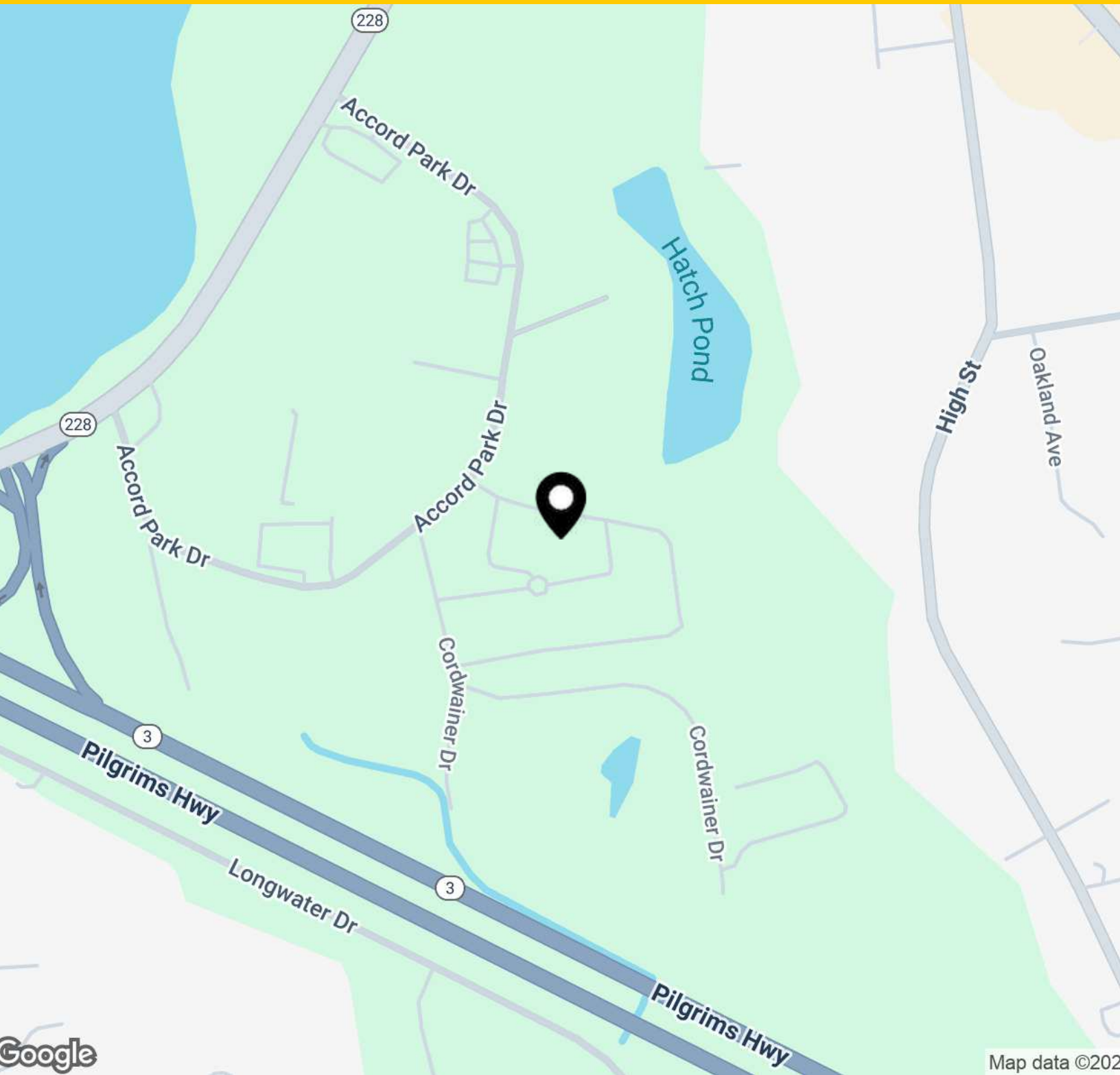
Lincoln

77 ACCORD PARK DRIVE

Norwell, MA 02061

Nearby Amenities

22,000 SF



Ellison Patten

617.951.4136

epatten@lpc.com

Lincoln



77 ACCORD PARK DRIVE

Norwell, MA 02061

Leasing Information:
617.951.4100

Ellison Patten
617.951.4136
epatten@lpc.com

Lincoln

Lincoln Property Company
53 State Street, 8th Floor
Boston, MA 02109

www.lpc.com